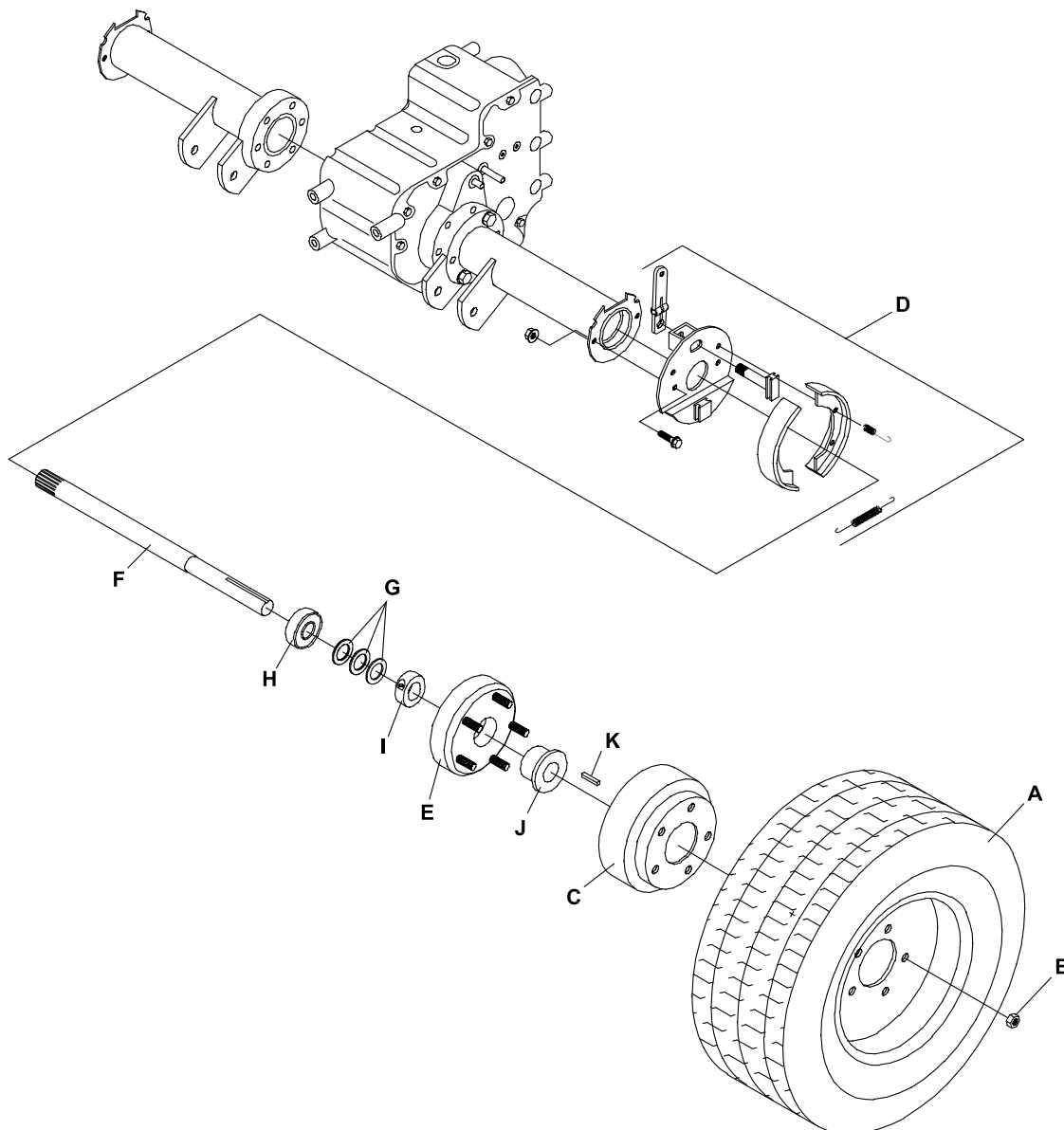


INTRODUCTION: This instruction sheet covers the installation of the Drive Axle Kit (970311) on the 230 tractor.

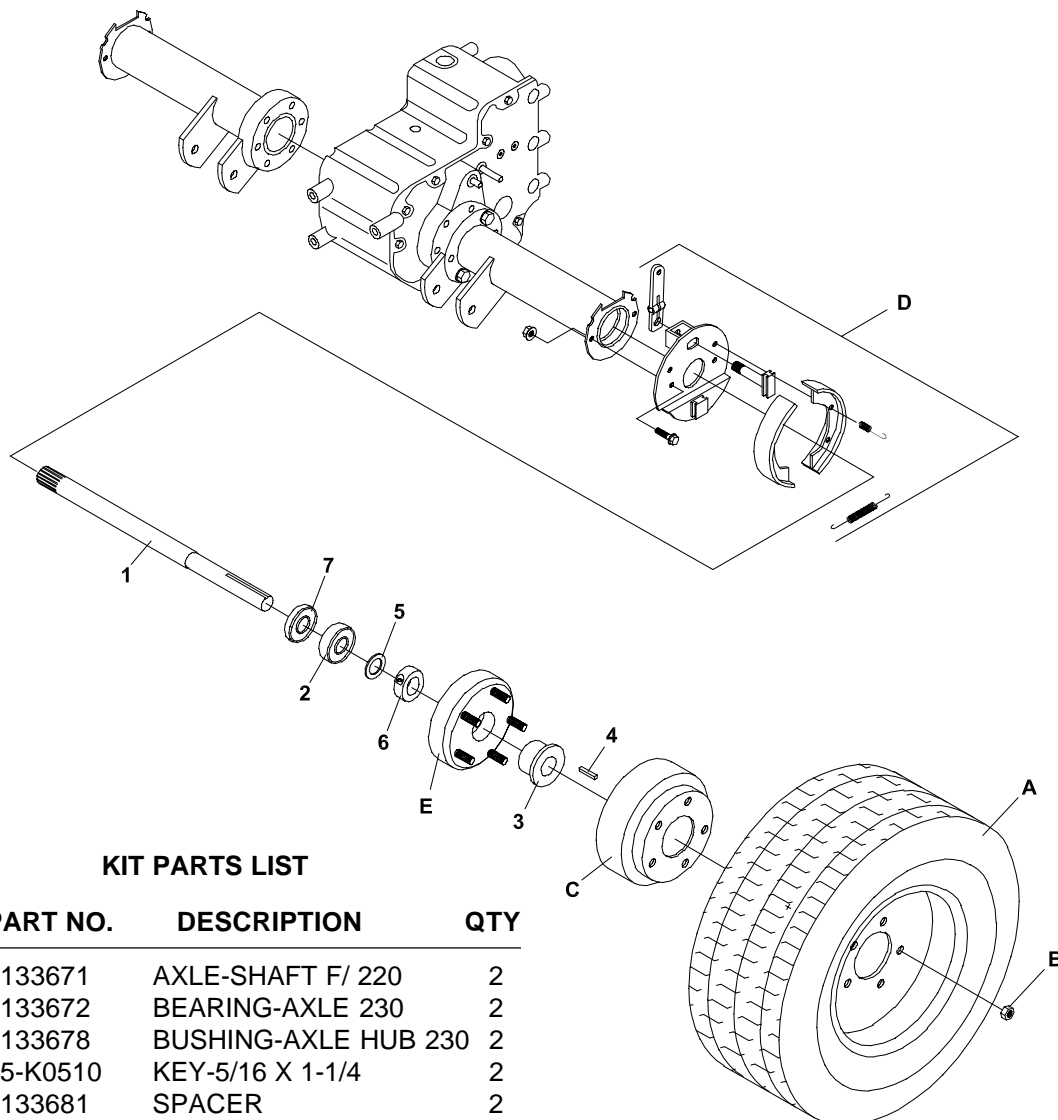
1. Remove tire **A**, nuts **B**, brake drum **C**, brake assembly **D** and hub **E**. Retain for later use.
2. Remove and discard axle **F**, shims **G** and bearing **H**.
3. Remove and discard two-piece set collar **I**, bushing **J** and key **K**.

NOTE: Repeat this process for opposite side.



4. Re-assemble brake assembly **D** and attach axle **1**, using (1) seal **7**, (1) bearing **2**, (1) shim **5** and (1) set collar **6**.
5. Attach hub **E** at this time and assemble bushing **3** and key **4**.
6. Re-assemble brake drum **C** to hub **E** and install tire **A**. Secure tire to Hub using the nuts **B** removed in Step 1. Tighten at this time.

NOTE: Repeat for opposite side.



KIT PARTS LIST

ITEM	PART NO.	DESCRIPTION	QTY
1	4133671	AXLE-SHAFT F/ 220	2
2	4133672	BEARING-AXLE 230	2
3	4133678	BUSHING-AXLE HUB 230	2
4	85-K0510	KEY-5/16 X 1-1/4	2
5	4133681	SPACER	2
6	4133682	COLLAR-SET	2
7	4133683	SEAL	2