

INTRODUCTION: This instruction sheet covers the installation of the Traction Control Lever Kit (970314) for the following models: Jacobsen; 742280, 742281 and 742282, Bob-Cat; 942280, 942281, and 942282, Bunton; 642280, 642281 and 642282 and Steiner; 442280, 442281 and 442282.

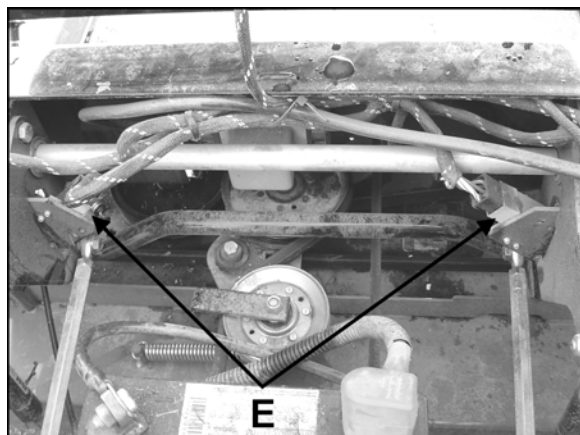
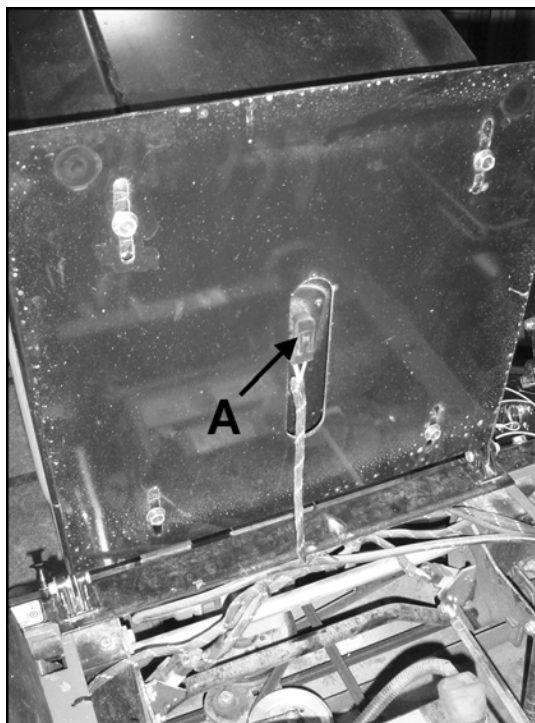
1. Park your mower on a level surface, engage the parking brake, shut off the engine and remove the key from the ignition.
2. Disconnect seat switch **A**.
3. Cut any wire ties attached to the front kick plate or control rod.

NOTE: If your machine is equipped with the powerlink option, you will need to disconnect the switch plug before moving on to Step 4.

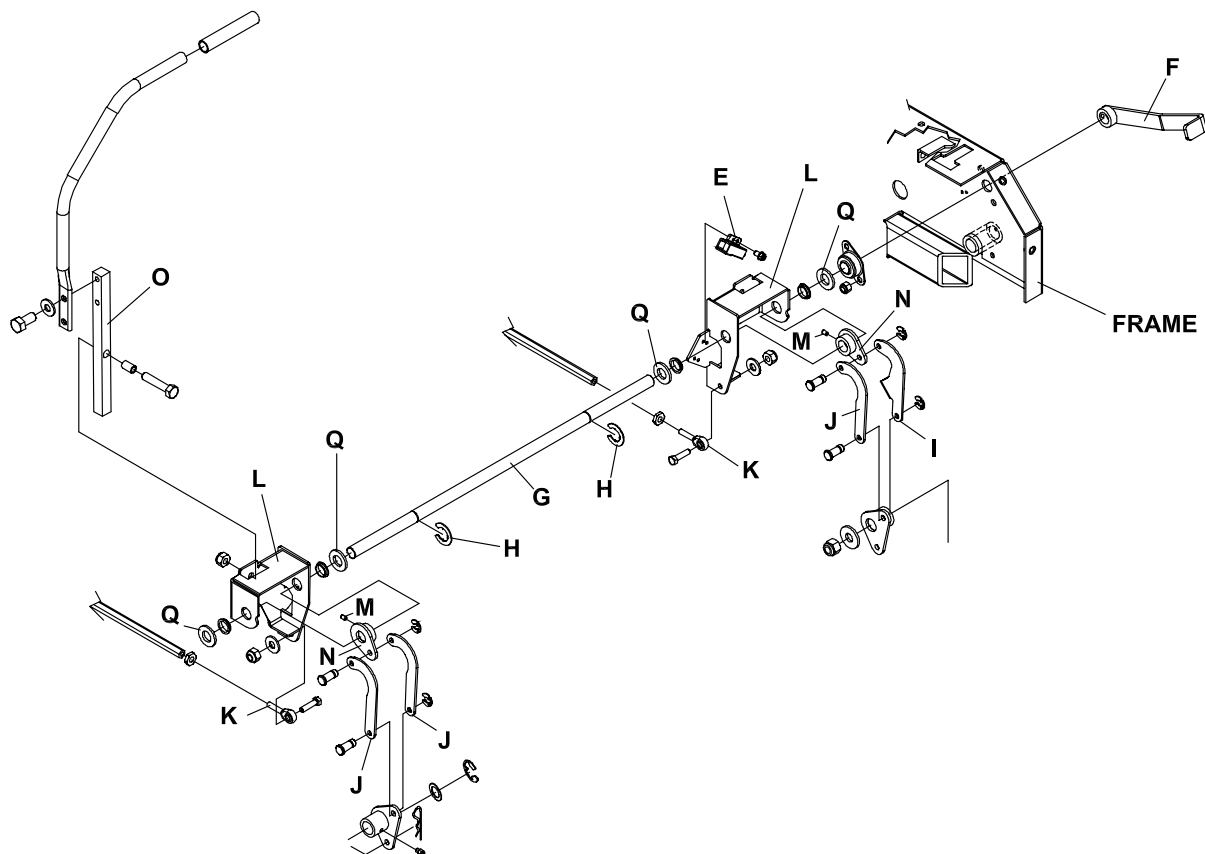
4. Remove control levers **B** and front kick plate **C**, complete with seat assembly. Retain fasteners for later use. Lay the kick plate with seat assembly out of the way

NOTE: If the floor plate **D** is bolted to the kickplate, the floor plate must be removed prior to removing the front kick plate.

5. Remove neutral switches **E** from the control weldments and retain fasteners for later use. Leave the switches attached to the wire harness and move them out of the way.



1. Remove and discard E-clips **H** from control shaft **G**.
2. Disconnect brake links **I** and **J**, turnbuckle rod ends **K** and dampeners (if so equipped) on both sides of the mower from the control weldments **L**. Before removing set screws **M**, heat to degrade thread locking compound for easy removal. Loosen set screws **M** in the brake control weldments **N** and slide the control shaft **G** with brake lever **F** attached, to the left, enough to remove components listed in Step 3. Control shaft **G** does not need to be removed completely. Note the order the components are removed.
3. Discard the control weldments **L**. Discard the rectangular handle bars **O** and the hardware holding them to the control weldments. Retain the brake control weldments **N** and fasteners for later use. Retain existing machine washers **Q** from shaft **G** for later use.



NOTE: Refer to Page 5 for parts identification and assembly procedures.

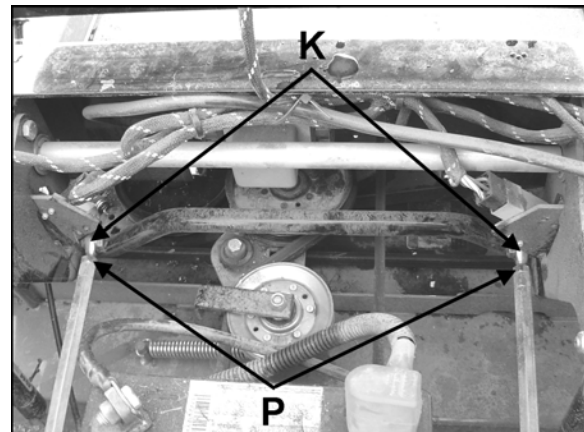
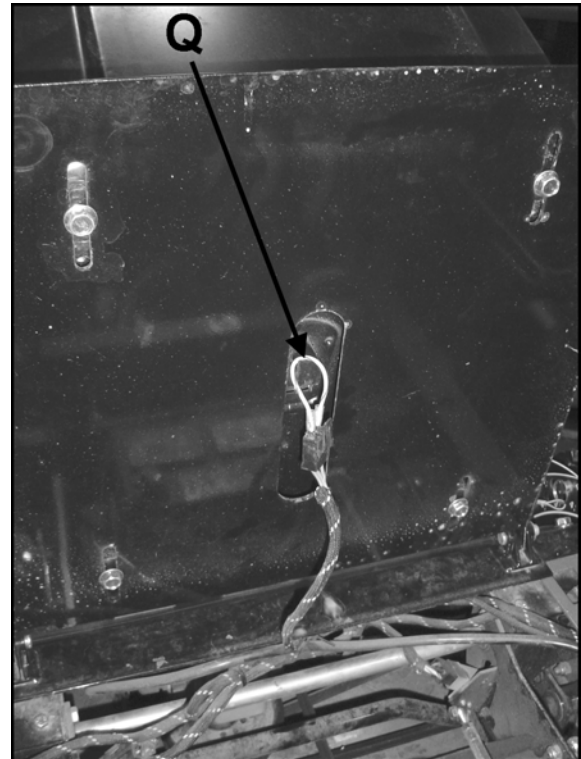
1. Install the control arm bushings **9** in the control weldments **1** and **2**.
2. Slide control rod **G** back into frame, installing control weldments **1** and **2**, (2) brake bushings **10**, (2) set screws **11**, brake control weldments **N** and machine washers **Q** on control shaft **G** in the opposite order they were removed. Leave set screws **11** loose at this time.
3. Slide bushings **10** against control weldments allowing .015 - .030 (1/64 - 1/32) endplay. Apply thread locking compound to set screws **11** and tighten securely.
4. Locate the brake control weldments **N** laterally and tighten set screws **11**, using a thread locking compound.
5. Assemble the control handles **3** to control weldments **1** and **2** using (4) 5/16-18 X 1-1/2" bolts **5**, (2) spacers **4**, (2) washers **7**, (2) control lever guides **8** and (4) 5/16-18 locknuts **6**.
6. Assemble the brake links **I** and **J**, to the brake control weldments **N** using the fasteners set aside in Step 4 Page 2.

NOTE: Replacement snap rings **12** are supplied in kit.

7. Reconnect the turnbuckle rod ends **K**, and dampeners (if so equipped) to the control weldments using the fasteners set aside in Step 3 Page 2.
8. Reinstall control levers using fasteners removed in Step 4 Page 1.
9. Reinstall the neutral switches to the control weldments using the fasteners set aside in Step 5 Page 1.
10. Operate the linkage to make sure everything works freely throughout the range of motion and correct any problems that may occur.

ADJUSTING THE NEUTRAL RETURN

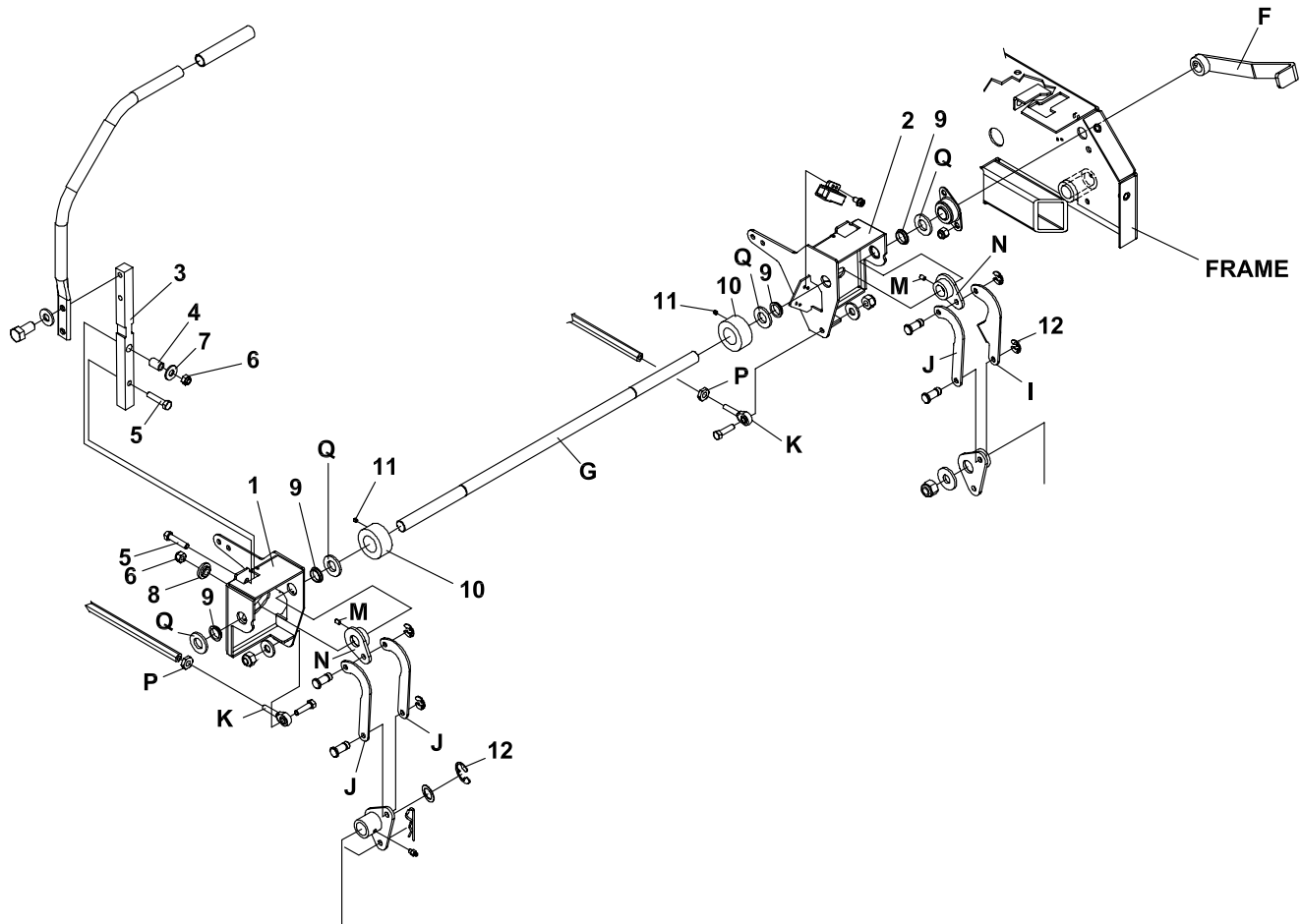
1. Reinstall the floor plate and kick plate and seat assembly removed in Step 4 Page 1.
2. Support the machine with the rear wheels off the ground. Use jackstands or equivalent support. Do not rely only on mechanical or hydraulic jacks.
3. Move the traction levers out into the neutral lock position and raise the seat.
4. Temporarily connect the two seat switch connector terminals with a jumper wire **Q** as shown.
5. Start the engine and run at low speed.
6. Loosen jam nuts **P** at both ends of turnbuckle **K** as shown.
7. Rotate the turnbuckle until the corresponding wheel stops turning. Lock the turnbuckle jam nuts. Run the engine up to high idle to check the adjustment. Readjust if necessary.
8. Repeat Steps 6 and 7 for the opposite side.
9. Remove the jumper wire and reconnect the seat switch.
10. Lower the unit to the ground.



I.S.-TRACTION CONTROL LEVER UPDATE KIT (970314)

JACOBSEN
A Textron Company

4134691 REVA



ITEM	PART NO.	DESCRIPTION	QTY
1	4133974.7	CONTROL BRKT RH	1
2	4133975.7	CONTROL BRKT LH	1
3	4133969	BAR-CONTROL HANDLE	2
4	4133156	SPACER	2
5	64123-69	BOLT-5/16-18X1-1/2	4
6	64229-02	LOCKNUT-5/16-18	4
7	64163-55	WASHER .328X.75X14	2
8	4133157	GUIDE-CONTROL LEVER	2
9	4127142	BSHG-CONTROL ARM	4
10	4125907	BSHG-BRAKE	2
11	64044-5	SCREW-SET 1/4-20X3/8	4
12	64144-31	SNAP RING.312	2