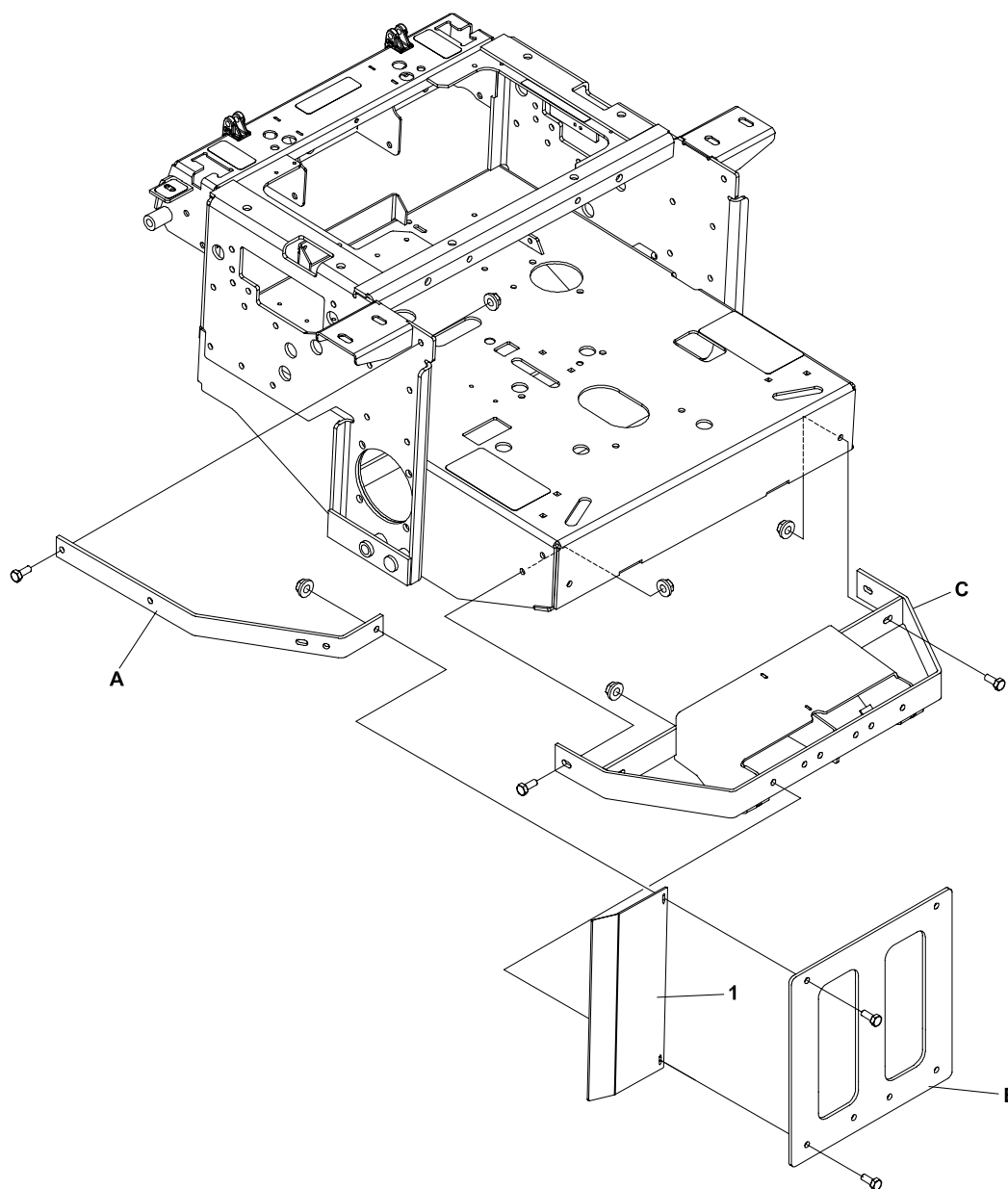


INTRODUCTION: This instruction sheet covers the installation of the muffler guard plate to the rear frame of the ZT mowers.

1. Attach the muffler guard plate **1** between bumper arm **A**, plate **B** and bumper **C** as shown, using existing hardware. Tighten all fasteners at this time.



ITEM	PART NO.	DESCRIPTION	QTY
1	4140869	PLATE-MUFFLER GUARD 1	