

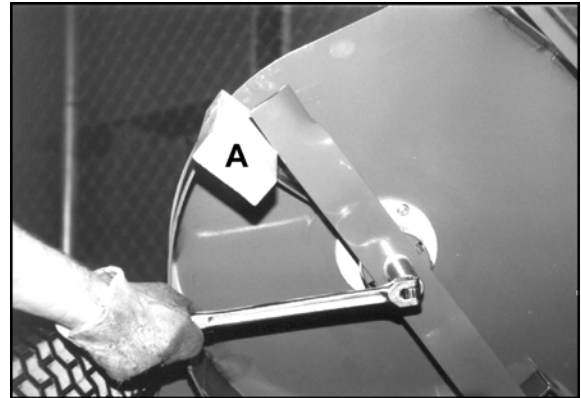
**INTRODUCTION:** This instruction sheet covers the installation of the mulching kit (75-05026) for the ZTMD52.

**NOTE:** Installation of this mulching kit requires that the cutterdeck be removed from the power unit.

1. Remove the cutterdeck from the power unit retaining all hardware for reassembly.

### **BLADE REMOVAL**

2. Follow these instructions to remove all blades.
  - A. Loosen with a box wrench or a socket and long breaker bar. To gain additional leverage, slip a long pipe or thick-walled tube over breaker bar or wrench.
  - B. Insert wood block **A** as shown, with grain perpendicular to blade, to prevent blade from turning when loosening.
  - C. Wear thickly padded gloves. Keep hands clear of blade path. Blades may rotate when bolt releases.

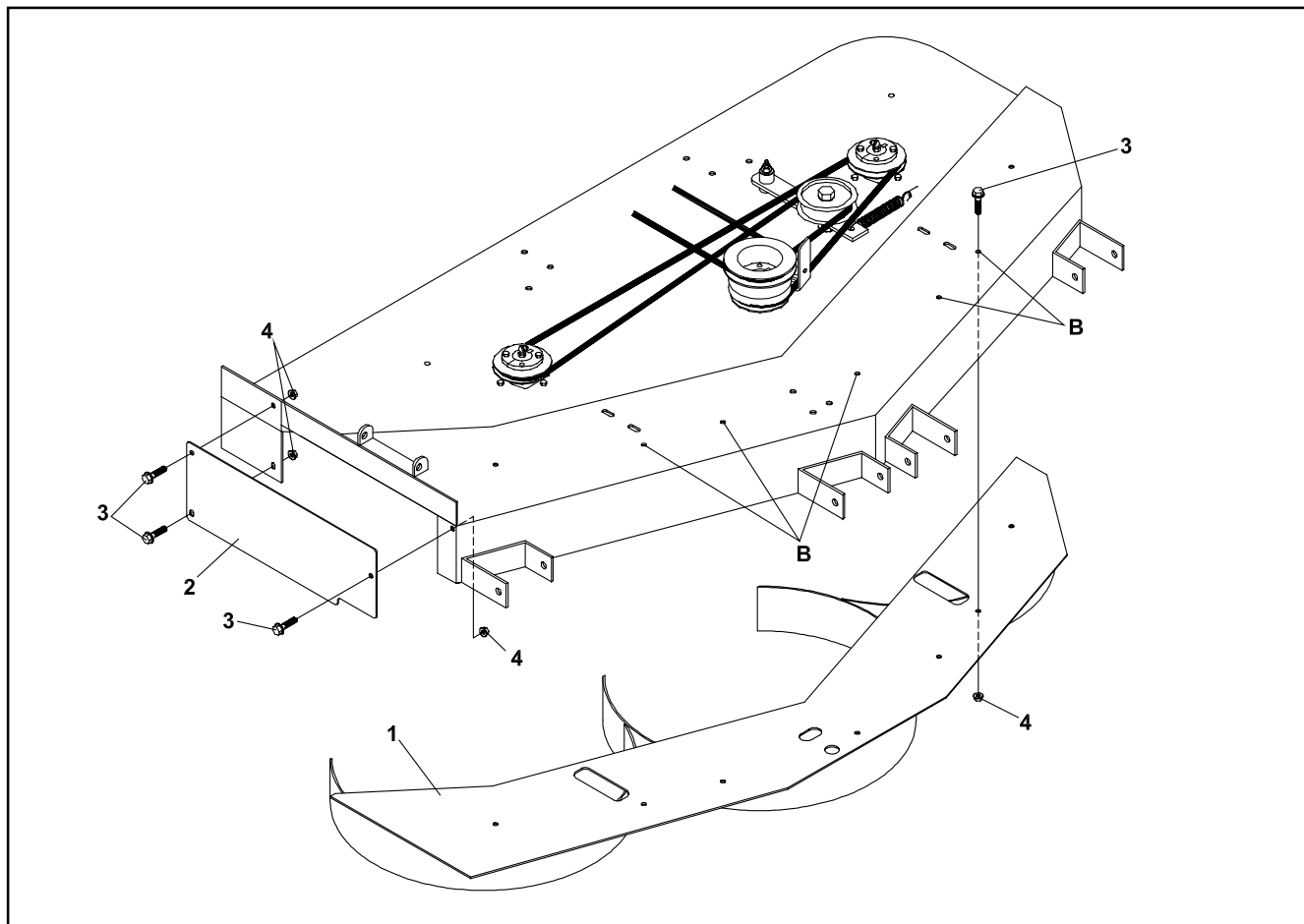


Refer to the drawing and parts list on page 2.

3. Scrape all grass from the area where the mulching baffles will be installed.
4. Remove the (2) 3/8" bolts securing the pulley shields to the top of the deck (one from each shield toward the front of the deck).
5. Lay the baffles **1** in the deck so that the end holes in the baffle align with the pulley shield bolt holes.
6. Re-install the (2) 3/8" bolts that were removed in step 4.
7. Drill (5) 11/32" holes **B** through the deck using the holes in the baffles as a template.
8. Install (5) 5/16 x 3/4" flange bolts **3** and nuts **4**. Tighten.
9. Install the new blades **5** supplied with the kit. (Blades in the kit are low lift style.) Rotate the blades manually to visually inspect that there is no contact between the blades and the mulching baffles.

**CAUTION** It is recommended that you wear gloves when handling the blades - they are very sharp.

10. Raise the discharge chute and position the cover plate **2** on the deck. The plate should be flush with the bottom and the front of the deck. Sight along the top of the plate to make sure it is straight. The single hole in the plate should be towards the front of the deck with the notch at the bottom.
11. If the holes are not already in the deck end, they must be drilled with a 11/32" drill bit, using the cover plate as a template.
12. Install (3) 5/16 x 3/4" flange bolts **3** and nuts **4**. Tighten all fasteners.
13. Reinstall the deck on the power unit.

**KIT PARTS LIST**

ITEM	PART NO.	DESCRIPTION	QTY
1	6112097.17	MULCHING BAFFLE, 52	1
2	6112091.17	COVER PLATE, DSCHRG	1
3	64139-08	BOLT-5/16-18X3/4 WLF	8
4	64141-6	NUT, 5/16-18	8
5 *	79-127	BLADE, 18" LO-LIFT	3
6 *	19-270	I.S.-MULCH KIT ZTDM52	1

\* NOT ILLUSTRATED

**MULCHING DO'S AND DON'TS****DO** wait for the grass to be dry or nearly dry.**DO** reduce speed. This gives more blade hits to better reduce clipping size.**DO** reduce or eliminate nitrogen fertilizer usage.

- a. Nitrogen makes grass grow faster in fast growth periods.
- b. Fast growth makes it hard to keep up.
- c. Mulching recycles plant nutrients so less fertilizer is required.

**DO** reverse pitch the cutterdeck. The idea is to cut grass into tiny pieces. A reverse pitch to the cutterdeck aids that. Raking the grass after cutting, with the back of the cutterdeck helps filter the pieces to the ground. A reverse pitch helps provide this raking action.

**DO** keep blades sharp.

**DON'T** take off more than one third of the grass height. Slower travel speeds and/or thin grass may allow this rule to be bent somewhat.