

LITTLE WONDER® Shredding ***TruckLoader***

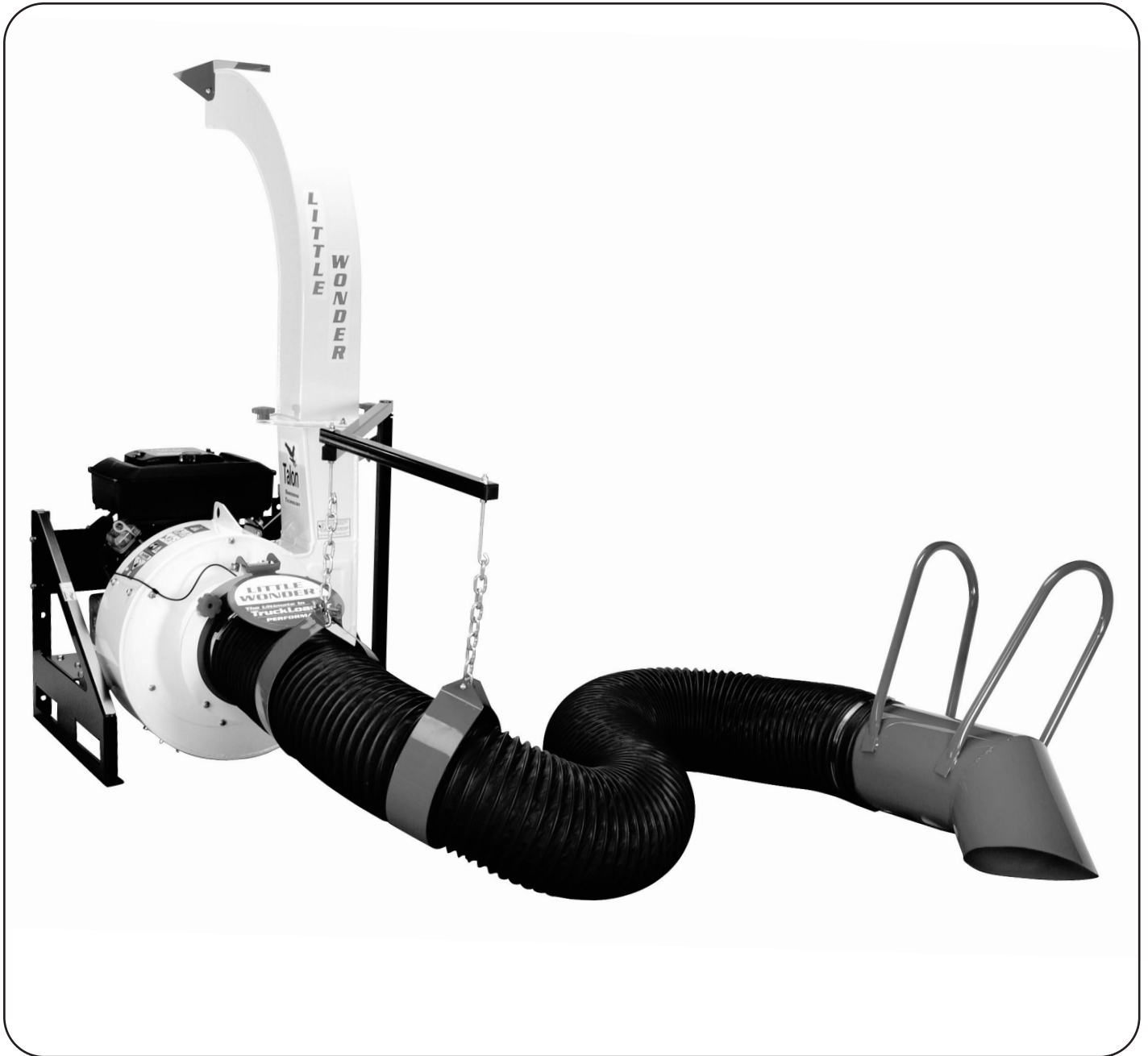


Table of Contents

Important Information

Introduction1

Service Information1

Special Safety Information1

Packaging

Packaging Information2

Safety and Warnings

Safety Decals2-3

General Safety Rules

Warnings - "Don'ts"4

Warnings - "Do's"4-5

Engine/ Fuel Warnings - "Don'ts"5

Engine/ Fuel Warnings - "Do's"5

Assembly Instructions

Mount the Shredding TruckLoader Frame ...6

Install Discharge Chute to Power Unit6

Change Discharge Chute Direction6

Attach Hose to Power Unit6

Attach Boom to the Frame and
Connect it to the Hose7

Hose Assembly7

Use of Lifting Lug8

Liner Exchange8

Put Oil in Engine Before Starting8

Operation

Starting the Engine8

Vacuumping8

Removing Clog in Hose9

Removing Blockage in Moving Parts9

Manually clear the clog9

Stopping the Engine9

Refueling the Engine9

Transporting the Shredding TruckLoader9

Storage and Maintenance

Storage10

Maintenance10

Removing the Fan11

Shredding TruckLoader bolt/nut Torque
Specification12

Part Numbers

Housing Assembly Part Numbers13

Frame Assembly Part Numbers14

Warranties

WarrantyBack cover

Important Information

A. Introduction

On behalf of everyone at **Little Wonder**, we would like to thank you for your purchase of a **Little Wonder** Shredding TruckLoader. This professional debris handling machine was designed to the highest standards to ensure you many hours of uninterrupted service.

This manual provides the information necessary for safe and efficient operation and service. For your safety, it is critically important that you read and understand this entire manual before operating your Shredding TruckLoader.

Specifications:

Model	Dry Weight	Max Rpm
8160	375 lbs.	3700

B. Service Information




Shredding TruckLoader Unit

Contact your local **Little Wonder** dealer.


Engine

Contact an authorized Briggs & Stratton dealer. Dealers are listed in the Yellow Pages under "Lawn and Garden Equipment Supplies", "Lawn Maintenance" or "Lawn Mowers". Your dealer will need to know the model and serial number of your engine. For their location, please consult the operator's manual provided with your engine.




C. Special Safety Information

 **WARNING**  **DANGER** 




**ATTENTION: THIS SYMBOL POINTS OUT
IMPORTANT SAFETY INSTRUCTIONS**

 **WHEN YOU SEE THIS SYMBOL** 

HEED ITS WARNING! STAY ALERT!

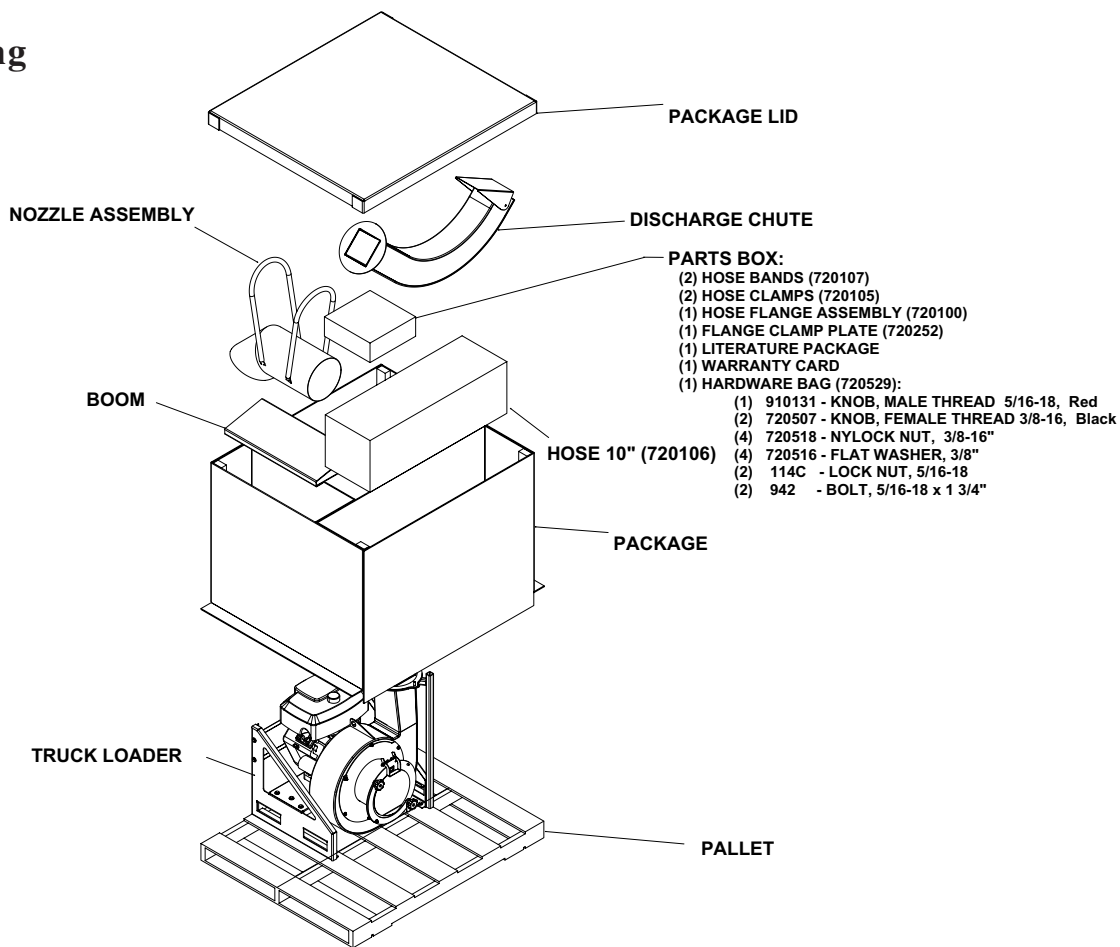
 **WARNING**  **DANGER** 

**TO REDUCE THE POTENTIAL FOR ACCIDENTS,
COMPLY WITH THE SAFETY INSTRUCTIONS IN
THIS MANUAL. FAILURE TO COMPLY MAY RESULT
IN SERIOUS PERSONAL INJURY AND OR
EQUIPMENT AND PROPERTY DAMAGE.**

 **WARNING**  **DANGER** 

**THE ENGINE EXHAUST FROM THIS PRODUCT
CONTAINS CHEMICALS KNOWN TO THE STATE OF
CALIFORNIA TO CAUSE CANCER, BIRTH DEFECTS
OR OTHER REPRODUCTIVE HARM.**

Packaging



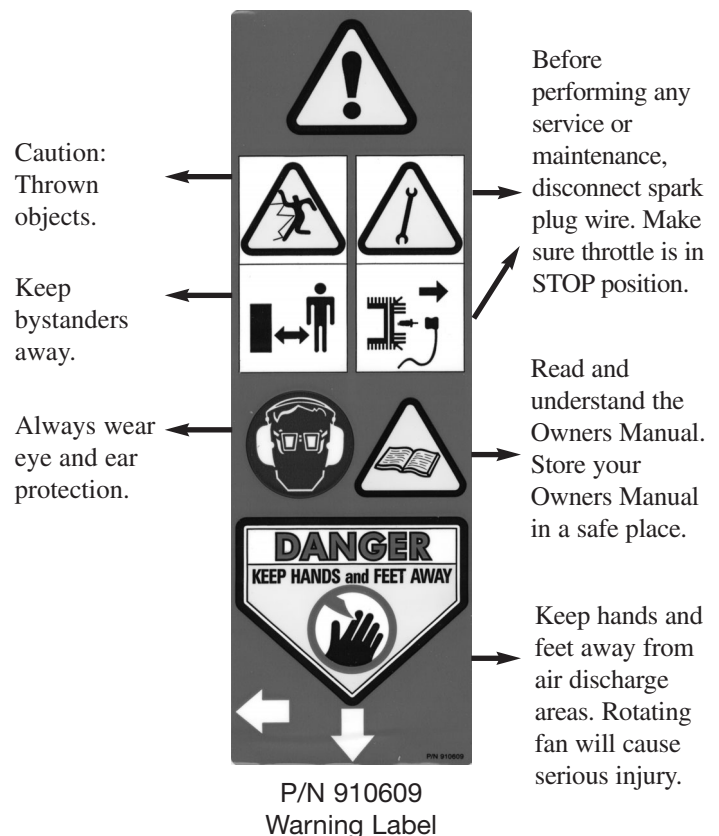
Safety and Warnings

A. Safety Decals

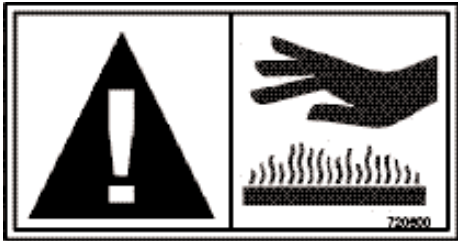
An important part of the safety system incorporated in this Shredding TruckLoader are the warnings and informational decals (labels) found on various parts of the unit.

These decals (labels) must be replaced if they become illegible due to abrasion, etc.

It is your responsibility to replace the decals (labels) when they become hard to read. The location of these decals and their part numbers for ordering are shown on the picture below.



Safety and Warnings

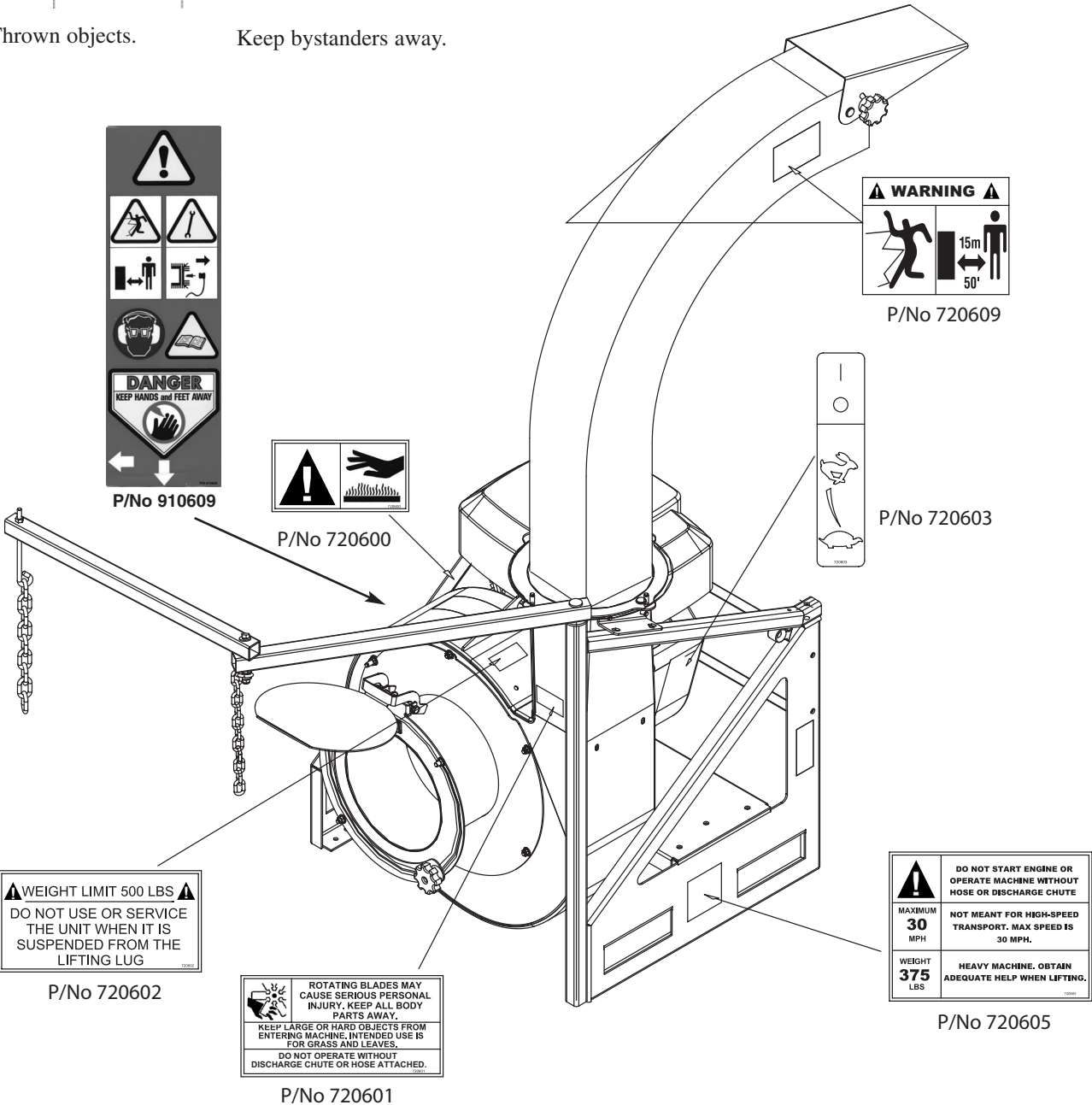
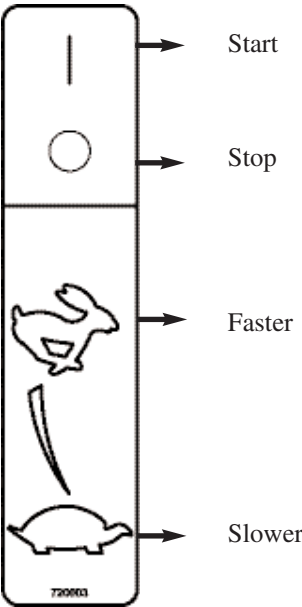


Caution: Hot Surface



Caution: Thrown objects.

Keep bystanders away.



General Safety Rules

1. Read and understand manual.
2. Wear eye, hearing, and breathing protection, proper clothing and footwear.
3. While operating the machine always be sure of a safe and secure operating position, maintain a firm footing and good balance at all times.
4. Keep area clear of children, pets and bystanders.
5. Never attempt to use an incomplete machine or one fitted with an unauthorized modification.
6. Avoid contact with and inhalation of harmful fluids, gases, mists, fumes, and dust.
7. Check operation of the safety interlock switch daily. Do not defeat interlock system; it is for your protection.
8. Do not allow children to operate machine.
9. Do not override or remove any safety devices.

WARNING DANGER

10. FAN COASTS AFTER THE ENGINE IS TURNED OFF.

WARNING DANGER

11. ROTATING FAN. DON'T ATTEMPT TO REMOVE MATERIALS FROM INTAKE OR DISCHARGE WHEN UNIT IS RUNNING, OR FAN IS ROTATING.

12. Keep hands away from hose inlet and discharge chute.
13. Disconnect spark plugs before doing any cleaning or maintenance – There are two spark plugs on the machine. Disconnect both.
14. If the Shredding TruckLoader is mounted on a trailer, make sure that the driver of the towing vehicle has the operator of the Shredding TruckLoader in full view at all times.
15. When operating the Shredding TruckLoader, operator must stay to the side of the machine, never in front or behind
16. Wear gloves to protect your hands.
17. Beware that the machine is loud and, during normal operation; may interfere with speech communication.
18. Check mounting hardware daily! When Shredding TruckLoader is attached to the Swing Away Hitch Mount, A-frame, or Tailgate, or other mounting option, beware of the possibility that the machine may overturn, fall, or tip over because of unexpected movement of the vehicle.

A. Warnings - "Don'ts"

Don't attempt to remove materials from intake or discharge when Shredding TruckLoader is running, or fan is rotating.

Don't install or remove components while Shredding TruckLoader is running. Turn off engine to make changeover. Be sure throttle is in the stop position, and the Shredding TruckLoader has come to a complete stop. Remove the spark plug wires from the spark plug before removing material.

Don't point the Shredding TruckLoader discharge chute in the direction of people, cars, glass, or other similar items which could be injured or damaged by blown debris.

Don't attempt to repair Shredding TruckLoader. Have repairs made by qualified Little Wonder dealer or repairman. See that only Little Wonder and recommended engine manufacturers replacement parts are used.

WARNING DANGER

DO NOT SMOKE WHEN FILLING FUEL TANK

Don't leave the engine running while the Shredding TruckLoader is unattended.

Don't store, spill, or use gasoline near flames or spark

B. Warnings - "Do's"

Always dress properly. Do not wear loose clothing or jewelry. They can be caught in moving parts. Use of sturdy gloves, non-skid footwear and safety glasses are recommended. Always wear ear protectors where possible. Use face filter to avoid breathing dust.

Always stay alert. Watch what you are doing and use common sense. Do not operate Shredding TruckLoader when fatigued.

Always keep hands away from air intake and air outlet chute. Keep both hands on handles when power is on.

Always maintain and examine Shredding TruckLoader with care. Follow maintenance instructions given in manual.

WARNING DANGER

DO NOT USE THE SHREDDING TRUCKLOADER IF THE MUFFLER IS DEFECTIVE OR MISSING.

B. Warnings - "Do's" Con't

Always store Shredding TruckLoader indoors. When not in use, store Shredding TruckLoader indoors in a sheltered area (a dry place) where it's not accessible to children. The Shredding TruckLoader, as well as fuel, should not be stored in a house. Keep throttle in the stop position.

Always be sure Shredding TruckLoader is fully assembled. Never operate Shredding TruckLoader without all guards and defectors in place. Ensure that all nuts, bolts, screws are installed and properly tightened.

Always keep the throttle in the "stop" position when not in use.

Always keep a safe distance between two or more operators when working together simultaneously.

WARNING DANGER

IF THE SHREDDING TRUCKLOADER IS USED IMPROPERLY OR SAFETY PRECAUTIONS ARE NOT FOLLOWED, THE USER RISKS SERIOUS INJURY TO THEMSELVES AND OTHERS.

READ AND UNDERSTAND THE FOLLOWING BEFORE ATTEMPTING TO OPERATE THIS SHREDDING TRUCKLOADER.

WARNING DANGER

HANDLE FUEL WITH CARE. IT IS HIGHLY FLAMMABLE. FUELING A HOT ENGINE OR NEAR AN IGNITION SOURCE CAN CAUSE A FIRE AND RESULT IN SERIOUS PERSONAL INJURY AND/ OR PROPERTY DAMAGE.

C. Engine/ Fuel Warnings - "Don'ts"

Don't fuel, refuel or check fuel while smoking or near an open flame or other ignition source. Stop engine and be sure it is cool before refueling.

Don't leave the engine running while the Shredding TruckLoader is unattended. Stop engine before putting the Shredding TruckLoader down or while transporting from one place to another.

Don't start, run this TruckLoader indoors, or in an improperly ventilated area as poisonous carbon monoxide and other gasses are emitted.

Don't run engine when electrical system causes spark outside the cylinder. During periodical checks of the spark plug, keep plug a safe distance from cylinder to avoid burning of evaporated fuel from cylinder.

Don't check for spark with spark plug or plug wire removed and grounded. Use an approved tester. Sparks can ignite fumes.

Don't run engine when the odor of gasoline is present or other explosive conditions exist.

Don't operate the unit if gasoline is spilled. Clean up spill completely before starting engine.

Don't refuel indoors or in an improperly ventilated area.

Don't operate your Shredding TruckLoader if there is an accumulation of debris around the muffler, and cooling fins.

Don't touch hot mufflers, cylinders or cooling fins as contact may cause serious burns.

D. Engine/ Fuel Warnings - "Do's"

Always use fresh gasoline in the fuel mixture. Stale gasoline can cause leakage.

Always pull starter cord slowly until resistance is felt. Then pull cord rapidly to avoid kickback and prevent arm or hand injury.

The use of spark arrestor mufflers is required by law in the state of California (Section 4442 of the California Public Resources Code), as well as in other states or municipalities. Federal laws apply on federal lands.

Always handle fuel with care; it is highly flammable. Never add fuel to a machine with a running or hot engine. Do not inhale fuel fumes as they are toxic.

Assembly Instructions

This unit is designed for vacuuming leaves, grass clippings, other organic materials, and quickly loading them from the ground into a truck.

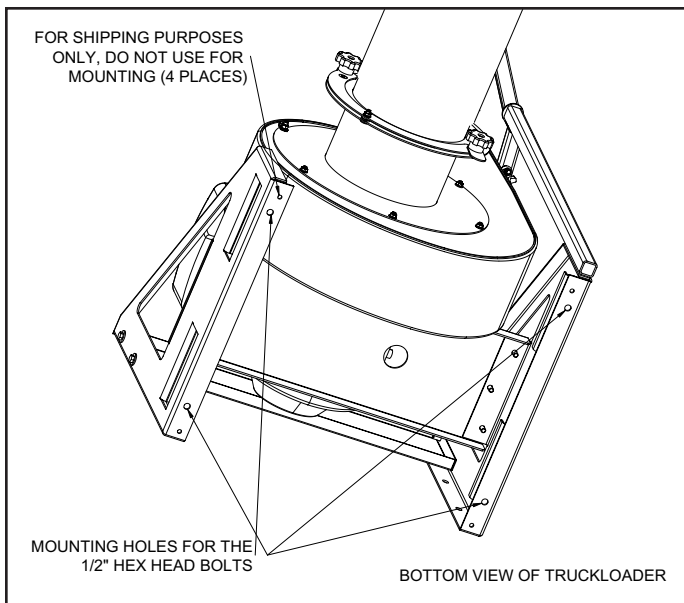
Vacuuming sand, rocks, and hard litter will affect the longevity of this machine, and can cause part damage. The Shredding TruckLoader is designed to be used in conjunction with a truck that has a receiver box installed. Be sure the receiver box is strong enough to withstand a high velocity and force of the incoming debris.

⚠ WARNING ⚠ DANGER ⚠

NEVER RUN OR OPERATE YOUR MACHINE UNLESS DISCHARGE CHUTE IS DIRECTED INTO A RECEIVER BOX, AND THE INTAKE HOSE IS INSTALLED.

A. Mount the Shredding TruckLoader Frame

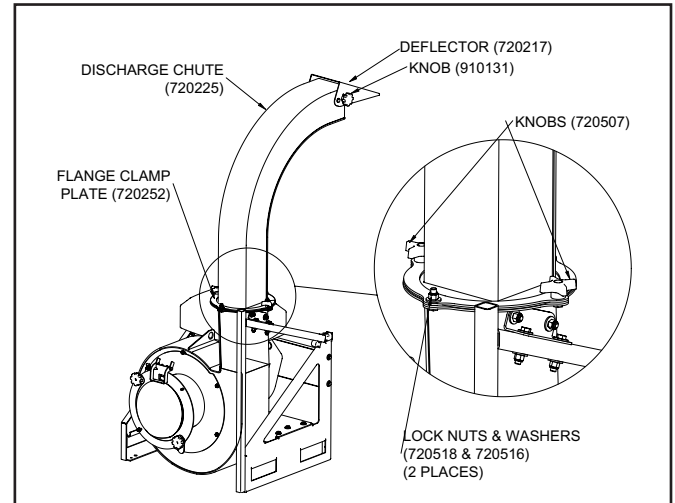
Mount the Shredding TruckLoader frame to the frame or swing away, and secure frame with four 1/2" hex head bolts (Grade Five or better). Do not use the 4 smaller holes for mounting. These are for shipping purposes only.



B. Install Discharge Chute to Power Unit

1. Slide the flange clamp plate (#720252) over the discharge chute deflector down to the flange.
2. Orient discharge chute (#720225) so its flange is facing the top of the Shredding TruckLoader housing, and slide the flange clamp plate (# 720252) attached to the discharge chute over the four housing flange studs.

3. Direct discharge into receiver box of the transport vehicle, and affix it with two knobs (# 720507), two nylon insert nuts (# 720518) and washers (# 720516) as shown below.
4. Position deflector (# 720217) to desired opening and secure adjusting knob (# 910131).

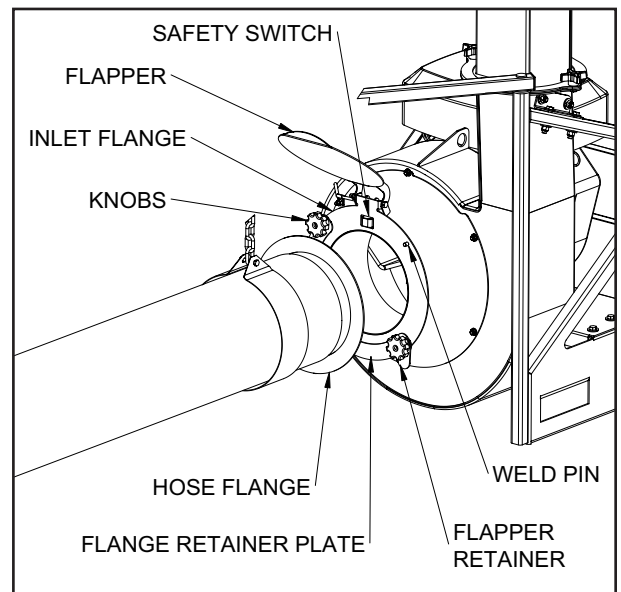


C. Change Discharge Chute Direction

1. Loosen knobs (# 720507) and nuts (# 720518).
2. Swivel discharge chute to desired direction.
3. Affix chute by retightening knobs and nuts.
4. Additional tools are not needed.

D. Attach Hose to Power Unit

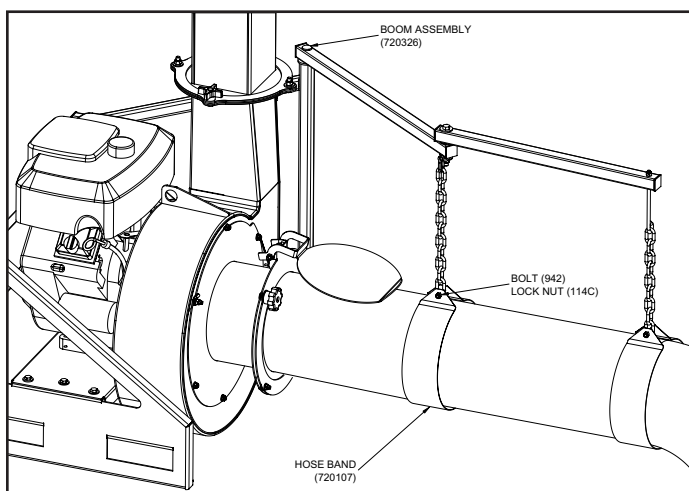
1. Insert Hose flange assy (#720100) attached to the hose (# 720106) in the space (gap) between inlet flange (# 720210) and flange retainer plate (#720250). Welded retaining pin on the inlet flange will prevent hose from sliding out of the slot.



2. The flange will activate the safety switch assy (#720232) that will allow you to operate the unit.
3. When hose is disconnected you can use the flapper retainer to lock the flapper in the closed position during the transportation.

E. Attach Boom to the Frame and Connect it to the Hose

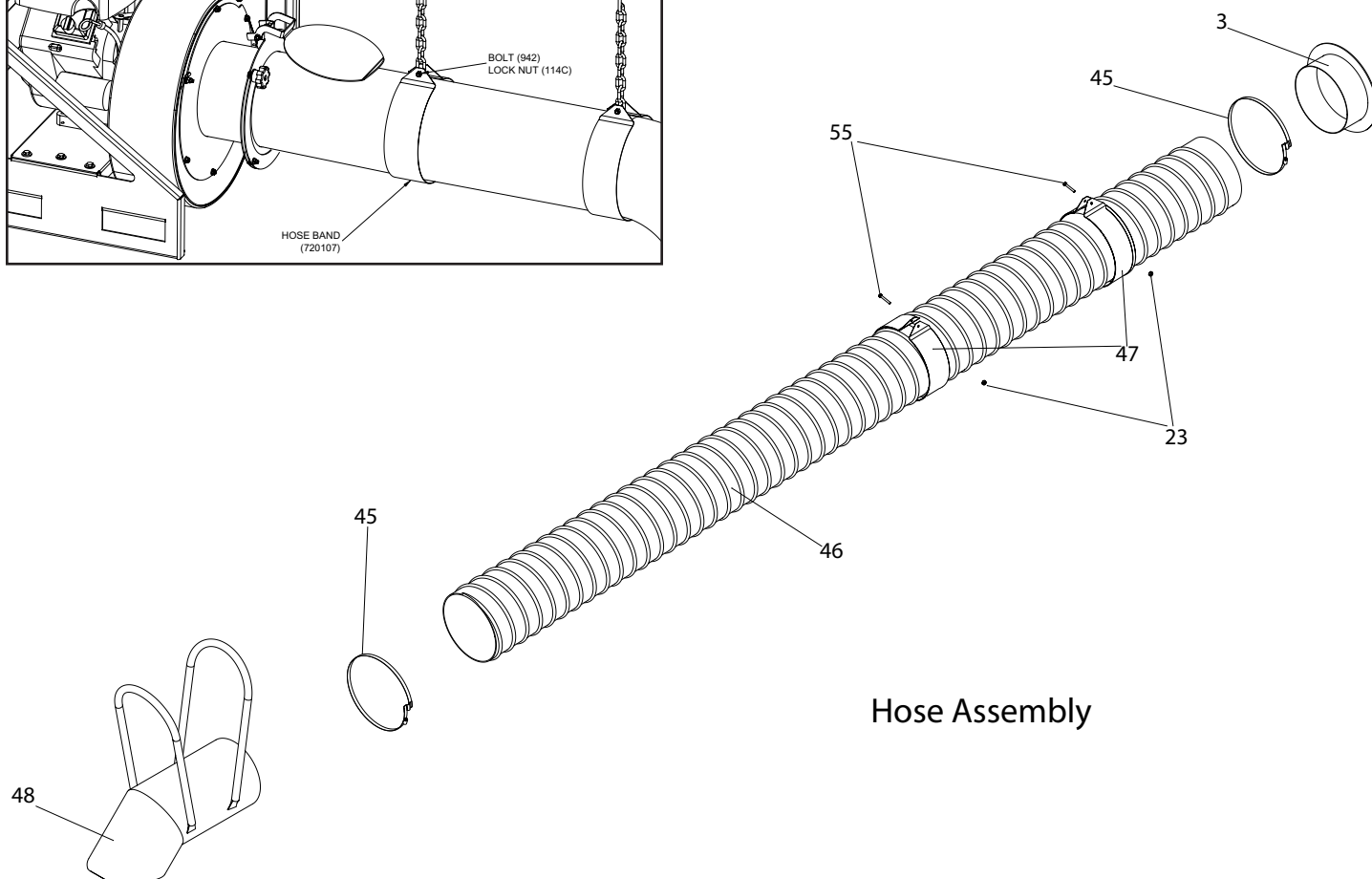
1. Insert shaft of the boom assembly (#720326) into the opening in the frame's tube support assembly (#720305).
2. Connect link of the chain (#720533) with the Hose support band (#720107) using bolt (#942) and nut (#117C).
3. Repeat this step and connect second Hose band.
4. Be certain the intake hose boom is properly adjusted, and hose can move freely.
5. Loosen knobs on inlet flange to rotate hose with attached intake nozzle (#720108) to desired position, then tighten knobs.



F Hose Assembly

1. Remove hose from the box and stretch it.
2. Hold the hose, and stretch each end as far as possible to open internal diameter.
3. Insert intake nozzle assembly (# 720108) into one of the open ends, by stretching ducting, and fitting the edge of the sheet metal into the hose.
4. Install hose clamp and tighten.
5. Insert flange assembly into the remaining hose opening using technique described above.
6. Install second hose clamp and tighten.
7. Put two hose bands (#720107) over the hose.
8. Attach them to the chain of the boom assembly by inserting bolt (# 942) through the holes in the hose band, and the last link of the chain. Tighten the nut (#114C).

⚠ WARNING ⚠ DANGER ⚠
HOSE WEIGHT IS APPROX 26 LBS. OBTAIN ADEQUATE HELP WHEN LIFTING.



Hose Assembly

G. Use of Lifting Lug

Little Wonder Shredding TruckLoader is supplied with convenient Lifting Lug that can be used when you need to move the unit. This Lug can hold weight up to a total of 500lbs.

⚠ WARNING ⚠ DANGER ⚠
DO NOT USE OR SERVICE THE UNIT WHEN IT'S SUSPENDED FROM THE LIFTING LUG.

H. Liner Exchange

Little Wonder Shredding TruckLoader is equipped with a replaceable liner in two sections (#720215 and #720216).

In order to replace the liner you will need the following tool:

5/32" Allen wrench, Tapered pin alignment tool, and 7/16" hex socket wrench.

Liner exchange procedure:

1. Remove Front Plate assembly (#720210)
2. Remove Impeller and Talon Ring.
3. Remove bolts that attach existing liner to the housing, using above specified tools, and remove worn parts.
4. Hold replacement liner halves, and slip them into the housing.
5. Position both pieces in place.
6. Align holes of the liner and housing using tapered alignment pin, starting from the holes closest to the liner's seam.
7. Attach both pieces of the liner to the housing (one hole at a time) with 12 screws, washers and nuts (6 per liner half, #310501, 720510, 310502). Insert bolt from the inside of the liner, and attach washer and nuts from the outside of the housing.

I. Put Oil in Engine Before Starting

1. Little Wonder recommends using SAE 30 Oil. The use of multi- viscosity oil will result in high oil consumption and possible engine damage.
2. Add gasoline to the fuel tank, and you are ready to start.

⚠ WARNING ⚠ DANGER ⚠
HANDLE FUEL WITH CARE. IT IS HIGHLY FLAMMABLE. FUELING A HOT ENGINE OR NEAR AN IGNITION SOURCE CAN CAUSE A FIRE AND RESULT IN SERIOUS PERSONAL INJURY AND/ OR PROPERTY DAMAGE.

See Engine Operating & Maintenance instructions for more detail description of type and amount of oil and gasoline used.

Operation

⚠ WARNING ⚠ DANGER ⚠
THE OPERATOR OF THIS SHREDDING TRUCKLOADER IS RESPONSIBLE FOR ACCIDENTS OR HAZARDS OCCURRING TO HIMSELF, OTHER PEOPLE OR THEIR PROPERTY.

A. Starting the Engine

⚠ WARNING ⚠ DANGER ⚠
FUEL IS EXTREMELY FLAMMABLE. HANDLE IT WITH CARE. KEEP AWAY FROM IGNITION SOURCES. DO NOT SMOKE WHILE FUELING YOUR EQUIPMENT.

1. Check oil level before starting the engine.
2. Turn fuel shut-off valve to "open".
3. Put choke control to "choke" position.
4. Move throttle control to "fast".
5. Push on / off electrical rocker switch located on the left side of the engine to "on" position.
6. Grasp rope handle. Pull slowly until resistance is felt, then pull rapidly to start engine.
7. Let engine warm up. Slowly adjust choke toward "run" position.

⚠ WARNING ⚠ DANGER ⚠
ENGINE EMITS CARBON MONOXIDE. DO NOT OPERATE OR REFUEL IN ENCLOSED AREA.

B. Vacuuming

1. With machine fully assembled and running, hold the handles of the intake nozzle and move intake nozzle in sweeping motions over debris. Or rotate flange 90 degrees, put nozzle on the ground and rake the debris in the direction of the nozzle opening.
2. Move nozzle close to debris, but do not block airflow into the nozzle.
3. To increase hose life, periodically rotate flange assembly (#720100) and reposition nozzle, so the hose will wear evenly.



WARNING



DANGER



KEEP RECOIL STARTER SCREEN AND ENTIRE ENGINE CLEAR OF ALL DEBRIS. DO NOT OPERATE ENGINE WITH AN ACCUMULATION OF GRASS, DIRT, LEAVES OR OTHER COMBUSTIBLE MATERIAL NEAR MUFFLER.

DO NOT operate unit if excessive vibration occurs; shut engine off immediately! Remove spark plug wires and check for damaged impeller or talon ring, loose impeller bolt, loose impeller key, or lodged foreign objects.

C. Removing Clog in Hose

1. Fully stretch hose in a straight line (with engine running and unit secured).
2. If hose does not clear, use “Removing Blockage Blockage in Moving Parts” instructions below.

D. Removing Blockage in Moving Parts



WARNING



DANGER



TURN OFF ENGINE BEFORE YOU DISCONNECT HOSE, AND MAKE SURE ALL MOVING PARTS COME TO A COMPLETE STOP.



WARNING



DANGER



BE SURE THROTTLE IS IN “STOP” POSITION, AND FAN HAS COME TO A COMPLETE STOP.



WARNING



DANGER



DISCONNECT THE SPARK PLUG WIRES BEFORE ANY CLEANING OR MAINTENANCE!



WARNING



DANGER



WEAR GLOVES, THE CLOG MAY CONTAIN SHARP MATERIALS.

Manually clear the clog

E. Stopping the Engine

1. Move throttle to “slow”.
2. Push rocker switch to “off”.
3. Close fuel shut-off valve.

F. Refueling the Engine

1. Stop engine and allow it to cool for a few minutes before refueling.

G. Transporting the Shredding TruckLoader

1. Disconnect intake hose assembly from the power unit
2. Remove boom assembly from the frame, you can leave hose assembly attached to the chains of the boom.
3. Remove discharge chute.
4. Place all listed above parts in the bed of the truck and secure them with rope or hardware.
5. Before towing check safety chains for proper attachment.



WARNING



DANGER



WHEN TRANSPORTING THE SHREDDING TRUCKLOADER, DO NOT EXCEED 30 M.P.H.!

HIGH-SPEED DRIVING AND POOR ROAD CONDITIONS CAN CAUSE DAMAGE TO THE UNIT.

Storage and Maintenance

A. Storage

1. When not in use store Shredding TruckLoader, in sheltered area (a dry place) not accessible to children. Keep throttle in the “Slow” position and switch “OFF”.
2. The Shredding TruckLoader, as well as fuel, should not be stored in a house or poorly ventilated areas.
3. Do not store fuel in the engine’s gas tank longer then 30 days.
4. To prolong Hose life, store it in the sheltered area out of sunlight and out of high ambient temperatures, and where it can’t be stepped on or crushed by other objects.

B. Maintenance

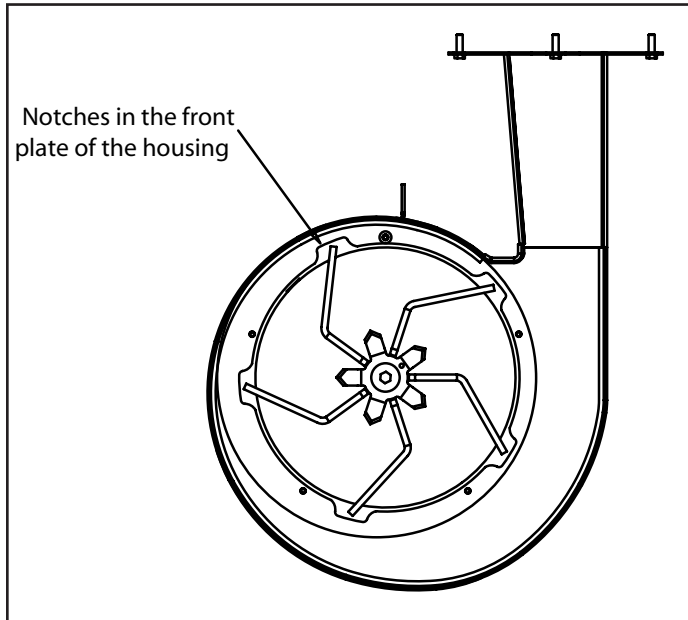
Area	Every Use	Every 5 Hrs	After First 8 Hrs of Use	Every 25 Hours	Every 50 Hours
Engine	See Engine Manual				
Check muffler area for accumulation of debris	✓				
Check operation of the safety interlock switch	✓				
Check for excessive vibration	✓				
Inspect for loose or damaged parts		✓			
Inspect for clean hose	✓				
Inspect labels condition	✓				
Check oil level		✓			
*Oil change			✓		✓
Service air cleaner				✓	
Clean and inspect spark plus arrester					✓

* Change oil every 25 Hrs if operating under heavy load or high ambient temperature

** See Engine Operating & Maintenance instructions for more detail maintenance and service schedule

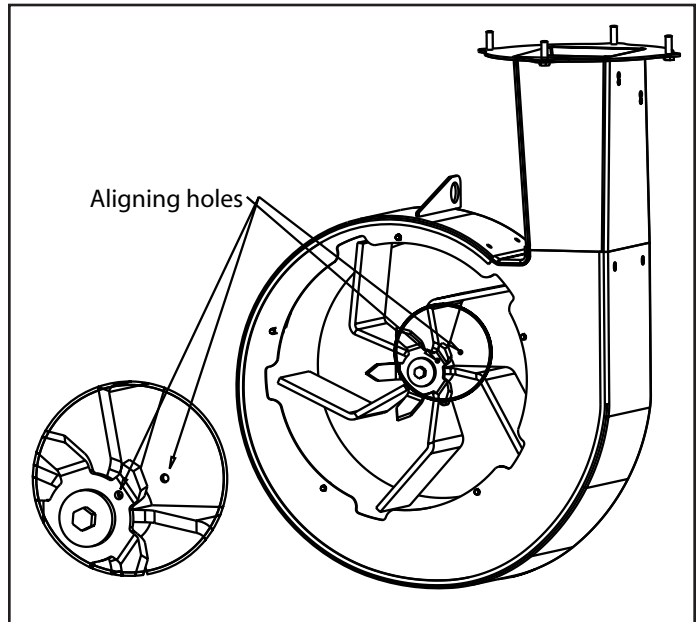
C. Directions for removing the Fan and Talon ring, and reinstallation

1. Remove spark plug wires from spark plug.
2. Remove hose flange assembly.
3. Remove front plate assembly.
4. Remove bolt securing fan and talon ring to engine crankshaft.
5. Remove talon ring
6. Align notch in the front plate of the housing, and fan blades.



7. The fan has a 3/4-16 nut welded on the fan hub. Insert a 3/4-16 x 5" long grade 5 (or better) bolt and jack or push the fan off the engine (Little Wonder P/no 910505 pressure screw is recommended.)
8. Replace damaged or worn fan with a new one. If during fan removal Key #720532 was removed for the keyway, reinstall it by applying a few drops of the Loc-tite 380 instant adhesive ("Black Max" P/no 38050) on the key, and load the key in the keyway of the shaft. (Cure time is approx. 1 min.)

9. Rotate the drive shaft with installed key by pulling the starter rope until key is aligned with one of the notches. Then align fan keyway with the drive shaft key and install fan (#720220).
10. Align talon ring hole with the fan holes, and install talon ring (#720255).



11. Use a new bolt (#720502) and complete fan and talon ring installation. Insure a secure fit upon re-assembling.

D. Shredding TruckLoader bolt/nut Torque specification

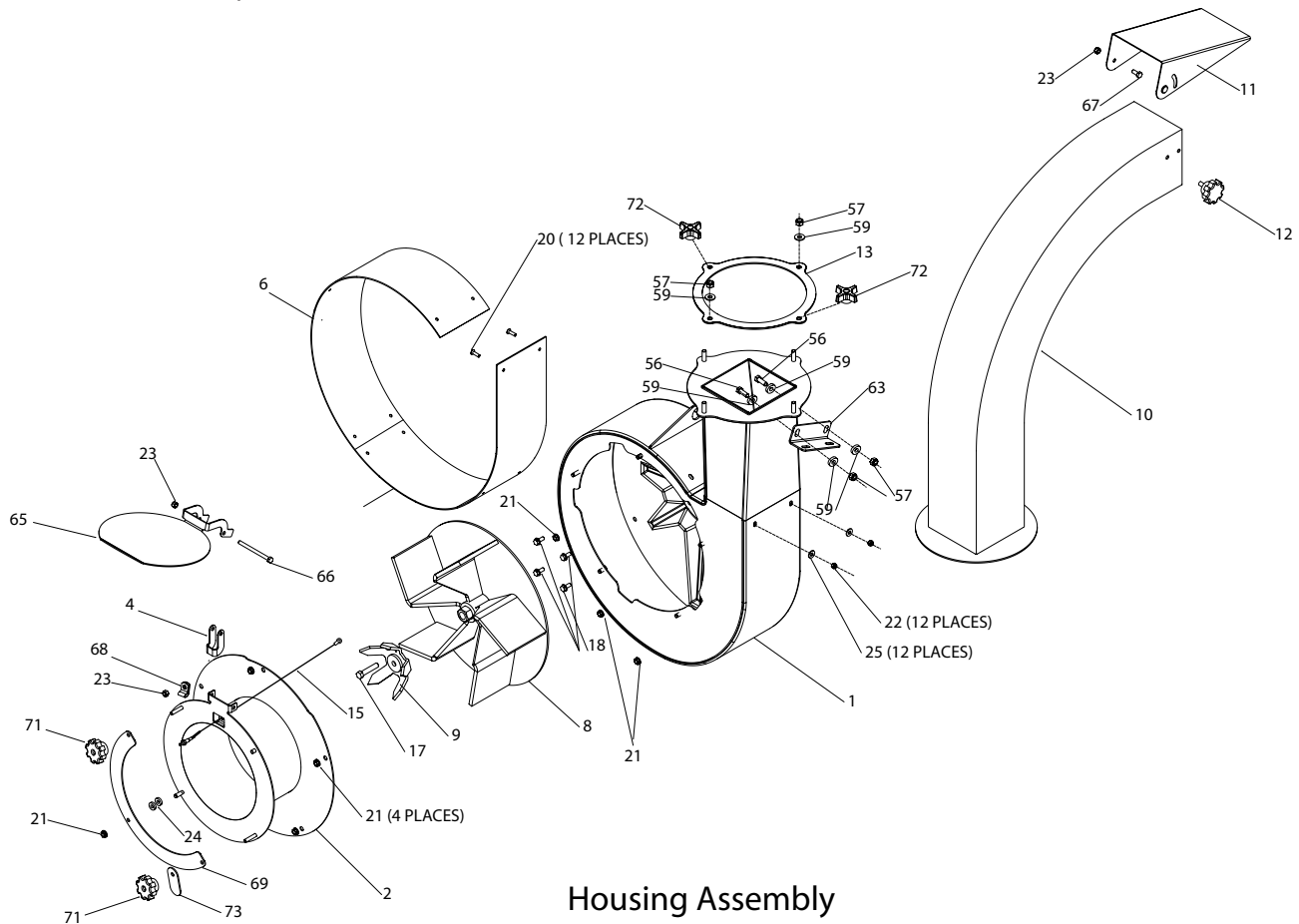
Location	Bolt/ Nut Size	Part No.	Item # (Exploded View)	Min torque Ft-Lbs (in-lbs)	Max torque Ft-Lbs (in-lbs)
Housing to engine face	$\frac{5}{16}$ - 24 x $\frac{3}{4}$ flange head, Grade 5	910503	18	22 (264)	28 (336)
Housing to engine mounting plate	$\frac{5}{16}$ - 18 flange nut	114-B	21	16 (192)	22 (276)
Engine to engine mounting plate	$\frac{5}{16}$ - 18 x 1 - $\frac{3}{4}$ gr.5	942 / 114C	55 / 21	19 (228)	25 (300)
Fan to crankshaft	$\frac{7}{16}$ - 20 x 2 - $\frac{1}{4}$ flange head gr. 8	720502	17	61	81
Front plate assembly to housing	$\frac{5}{16}$ - 18 flange nut	114-B	21	16 (192)	22 (276)
Flange retainer plate to front plate assembly	$\frac{5}{16}$ - 18 nylon insert	114C	23	19 (228)	25 (300)
Liner to housing	$\frac{1}{4}$ - 28 x $\frac{3}{4}$ screw	310501/310502	20 / 22	9(108)	11(132)
Support angle to housing	$\frac{3}{8}$ - 16 Hex Head nut	8-57/720518	56 / 57	16 (192)	22 (276)
Support angle to support tube assembly	$\frac{3}{8}$ - 16 x 2 - $\frac{1}{4}$ Hex Head Bolt	720505/720518	27 / 57	29(348)	31(372)
Frame: right and left side assemblies to engine mounting plate and rear panel assembly	$\frac{3}{8}$ - 16 x 1 bolt, grade 5	8-57 / 102B	56 / 57	29(348)	31(372)
Guide starter rope to support tube assembly	$\frac{1}{4}$ - 20 x 2 - $\frac{1}{4}$ bolt	720503/720325	54 / 22	7(84)	9(108)

Part Numbers

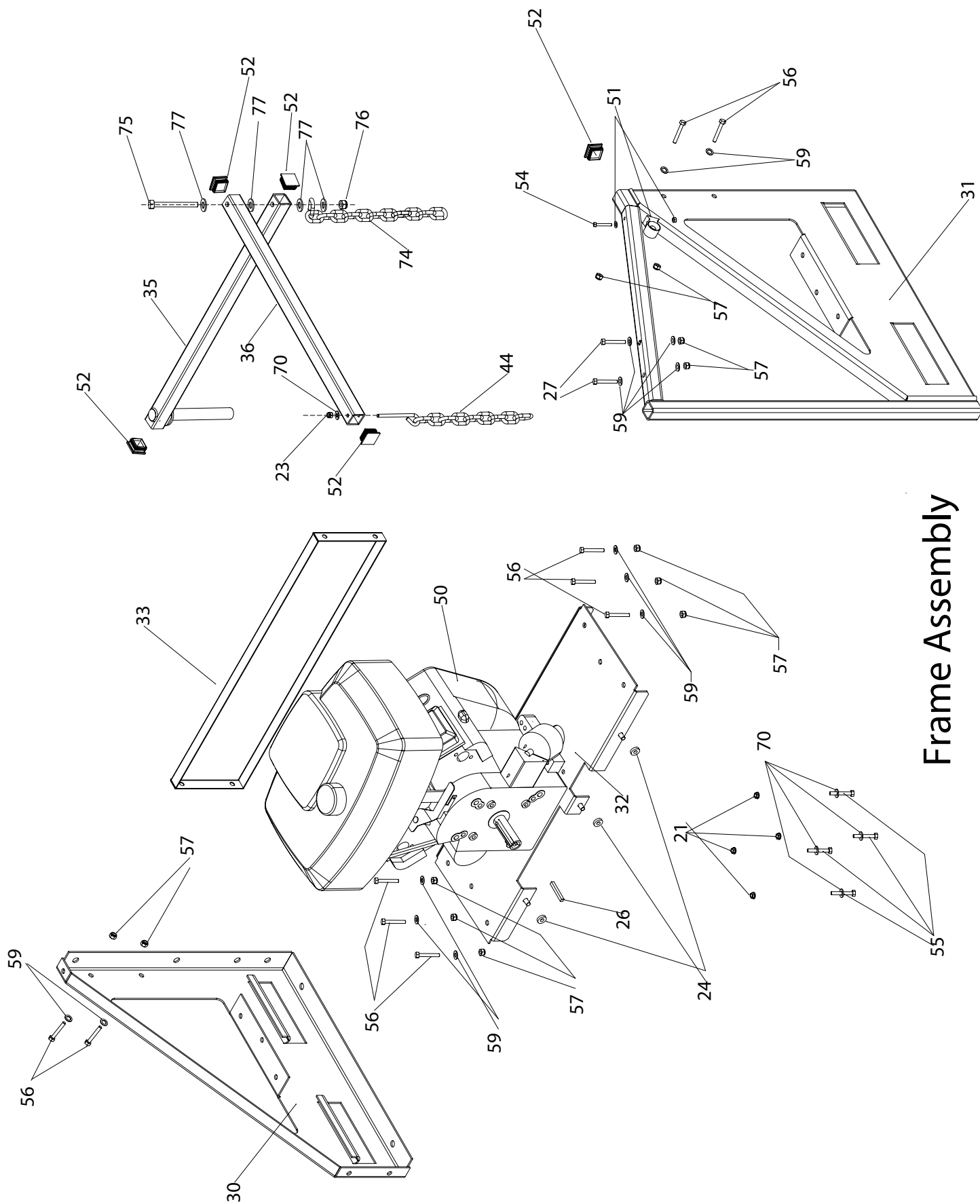
A. Housing Assembly

Key No.	Part No.	Description	Qty.
1	720200	Housing Assy 16HP	1
2	720210	Front Plate Assy	1
3	720100	Hose Flange Assy	1
4	720214	Switch Plate	1
6	720215	Housing Liner Left Half	1
7	720216	Housing Liner Right Half	1
8	720220	Fan Assy 16HP - Balanced	1
9	720255	Talon Ring	1
10	720225	Discharge Chute Assembly	1
11	720217	Deflector Assy	1
12	910131	Knob-male thread, 5/16-18, color red	1
13	720252	Flange Clamp Plate	1
15	720232	Wire Assembly	1
17	720502	Bolt 7/16-20 x 2-1/4" Lg. Hex Head Grd 8	1
18	910503	Bolt 5/16-24 x 3/4" Lg. Serrated Flange Head Grd. 5	4
20	310501	Screw 1/4-28 x 3/4" Lg. Flat Head Socket Cap S.S.	12
21	114B	Nut Serrated Flange Lock 5/16-18	13
22	310502	Nut Nylock 1/4-28	12
23	114C	Nut Lock 5/16-18 Nylon Insert	6
24	720509	Washer 5/16, 1/8" Thick	5
25	720510	Washer 1/4" USS Flat	12
26	720532	Key 1/4" x 1/4" x 2" Lg.	1
27	720505	Bolt 3/8-16 x 2-1/4" Lg. Grade 5	2
30	720300	Frame Right Side Assembly	1
31	720305	Frame Left Side Assembly	1
32	720308	Engine Mounting Plate Assy	1
33	720310	Frame Rear Panel Assy	1
35	720326	Boom Assy	1

Key No.	Part No.	Description	Qty.
36	720314	Tube Square Boom	1
44	720322	Chain Loop Assy (3/8-16 Thread)	1
45	720105	Clamp for Hose	2
46	720106	Hose 10" dia x 12.5 ft	1
47	720107	Hose Band	2
48	720108	Intake Nozzle Assy	1
50	720900	Engine	1
51	720325	Guide starter rope - B&S 396526	1
52	720324	End Plug 1-1/4" x 1-1/4" x 1/8" Sq Tube	5
54	720503	Bolt 1/4-20 x 2-1/2" Lg. Grade 5	1
55	942	Bolt 5/16-18 x 1-3/4" Lg. Grade 5	6
56	8-57	Bolt 3/8-16 x 1" Lg. Grade 5	12
57	720518	NutLock 3/8-16 Nylon Insert	18
59	720516	Washer 3/8 USS Flat	28
63	720244	Support Angle	1
65	720246	Flapper	1
66	720517	Bolt Hex 5/16-18 x 4" Lg. Grade 5	1
67	129C	Bolt Hex 5/16-18 x 3/4" Lg. Grade 5	1
68	701312	Clip-wire harness	1
69	720250	Flange Retainer Plate	1
70	720511	Flat Washer 5/16 USS	9
71	154	Knob-female thread, 5/16-18, color red	2
72	720507	Knob-female thread, 3/8-16, color black	2
73	720257	Flapper Retainer	1
74	720533	Chain Boom	1
75	720534	Bolt Hex 7/16-14 x 4" Lg. Grade 5	1
76	720535	Nut Nylock 7/16-14 Zinc	1
77	720536	Washer 7/16 USS Flat	4



Housing Assembly



Frame Assembly

1 YEAR LIMITED SERVICE & WARRANTY POLICY FOR SHREDDING TRUCKLOADER

The **Little Wonder** Shredding TruckLoader is guaranteed against defects in material and workmanship for a period of ONE YEAR from date of purchase, when used for RESIDENTIAL SERVICE, or COMMERCIAL SERVICE. Any **Little Wonder** Shredding TruckLoader or part found to be defective within the warranty period is to be returned to any registered Little Wonder Dealer.

Engines for all gasoline powered products are warranted separately by the engine manufacture for a period of a year. Therefore, there are no warranties made, expressed or implied, for engines for gasoline powered products by **Little Wonder**.

Transportation charges for parts and units submitted for replacement under this warranty must be borne by the purchaser.

THIS WARRANTY shall not be effective if the product has been subject to misuse, negligence or accident, or if the product has been repaired or altered outside of our Southampton factory in any respect which affects its condition or operation.

Little Wonder shall not be liable for any special indirect or consequential damages arising from defective equipment. Any implied warranty, including merchantability of fitness for a particular purpose, shall not extend beyond the written warranty period.

THIS WARRANTY shall only be effective if the enclosed Warranty/Registration card is properly filled out and returned to **Little Wonder**, Div. of Schiller-Pfeiffer, Inc. at time of purchase.



THE ENGINE EXHAUST FROM THIS PRODUCT
CONTAINS CHEMICALS KNOWN TO THE STATE OF
CALIFORNIA TO CAUSE CANCER, BIRTH DEFECTS
OR OTHER REPRODUCTIVE HARM.

LITTLE WONDER®
DIVISION OF SCHILLER-PFEIFFER, INCORPORATED
1028 STREET ROAD, P.O. BOX 38
SOUTHAMPTON, PA 18966
PHONE 877-596-6337 • FAX 215-357-8045
877-LWONDER
www.littlewonder.com

P/N 720701
7/03