

# PARTS MANUAL

## AERATOR MODEL:

### TA-17D

Split Drive Aerators



# ***CLASSEN***<sup>®</sup>

C100210

1028 Street Road • P.O. Box 38  
Southampton, PA 18966 U.S.A.  
Ph. (877)569-6337

# TABLE OF CONTENTS

|   |   |
|---|---|
| INTRODUCTION .....                      | 1 |
| Thank You .....                         | 1 |
| Read This Manual .....                  | 1 |
| Warranty .....                          | 1 |
| Measurements .....                      | 1 |
| Serial Numbers .....                    | 1 |
| Ordering Part .....                     | 1 |
| Directions .....                        | 1 |
| OWNERS RECORD .....                     | 1 |
| PRE-DELIVERY CHECK LIST .....           | 1 |
| DELIVERY CHECK LIST .....               | 1 |
| TA-17D SPLIT-DRIVE AERATOR .....        |   |
| Parts Main Frame .....                  | 2 |
| Parts Power Train Assembly .....        | 3 |
| Parts Handle and Control Assembly ..... | 4 |
| TWO YEAR LIMITED WARRANTY .....         | 5 |

## INTRODUCTION

### THANK YOU

Thank you for purchasing a CLASSEN Aerator

### READ THIS MANUAL

Read this manual carefully in its entirety. It contains safety, operating, maintenance, and adjustment instructions for your Aerator. By following the operating and maintenance instructions you will prolong the life of your equipment and maintain its maximum efficiency. Failure to do so could result in personal injury or equipment damage.

This manual should be considered a permanent part of your Aerator and should remain with it if you sell it.

### WARRANTY

Refer to last page.

### MEASUREMENTS

U.S. Units of measure are used in this manual.

### SERIAL NUMBERS

Write frame and engine serial numbers, plus model numbers in "Owner's Record" section below. You may need these numbers when you order parts. The serial number stick plate is located on the right rear of the Aerator frame.

### ORDERING PARTS

When ordering parts, always give the serial number and model of your Aerator as well as the quantity, part number and description of the part needed.

### DIRECTIONS

"Right Hand" and "Left Hand" sides of the Aerator are determined by facing the "back" of the Aerator as you would operate the machine.

## OWNER'S RECORD

DATE PURCHASED \_\_\_\_\_

AERATOR MODEL NUMBER \_\_\_\_\_

AERATOR SERIAL NUMBER \_\_\_\_\_

ENGINE MODEL NUMBER \_\_\_\_\_

ENGINE SERIAL NUMBER \_\_\_\_\_

## PRE-DELIVERY CHECK LIST

Check the following before you deliver the Aerator to the customer.

1. Guards and shields fastened in place.
2. Decals fastened and legible.
3. Weight bar installed.
4. Gas lever on engine turned on.
5. All lubrication points greased.
6. 6:1 gearbox oil level.
7. Engine oil level.
8. Air cleaner.
9. Touch up scratches.
10. Chain(s) tight.
11. Lowering handle working properly.
12. Control handle(s) working to tighten V-belt(s).
13. Add fuel, start engine, test run.

DATE SET UP \_\_\_\_\_/\_\_\_\_\_/\_\_\_\_\_

## DELIVERY CHECK LIST

Review the operators manual with the customer.

1. Schiller Grounds Care, Inc. warranty.
2. Safe operation and service.
3. How to use controls.
4. Operating the machine correctly.
5. Transporting the Aerator.
6. Correct fuel and lubricants.
7. Daily and periodic inspections.
8. Changing oil after break-in period.
9. Servicing the Aerator regularly and correctly.
10. Schiller Grounds Care, Inc. parts and service.
11. Give the customer the operators manual and encourage customer to read it.

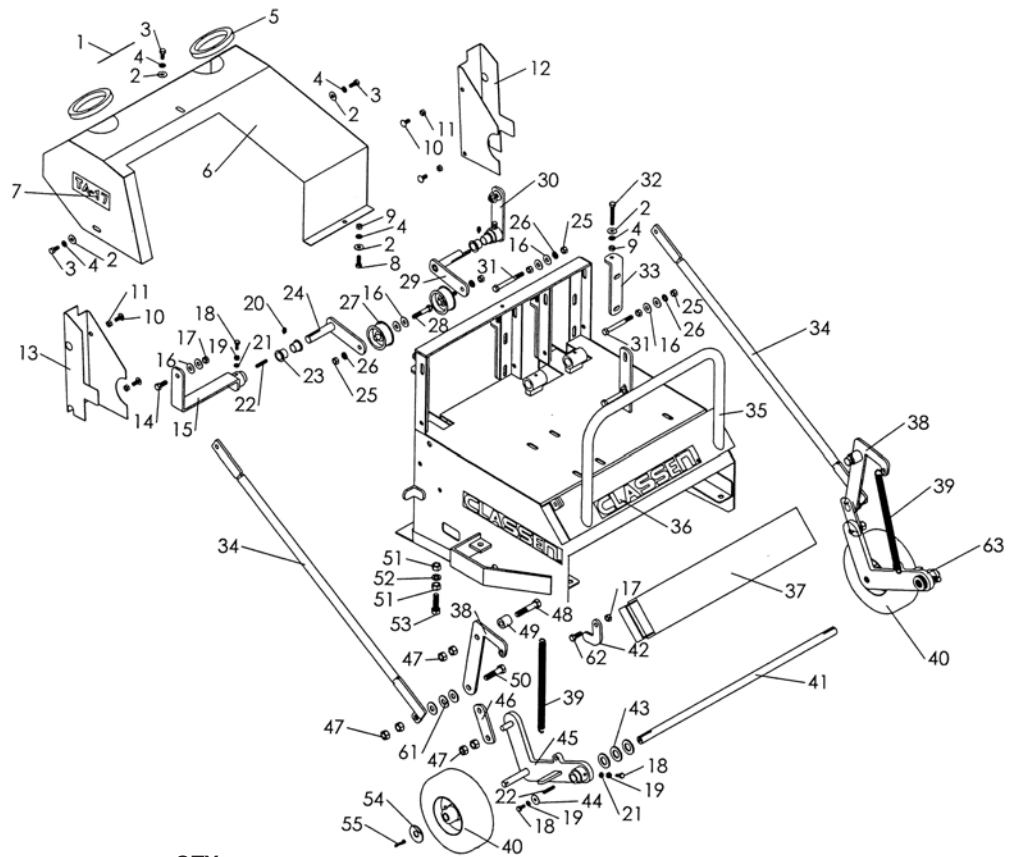
DATE DELIVERED \_\_\_\_\_/\_\_\_\_\_/\_\_\_\_\_

SIGNATURE \_\_\_\_\_

# TA-17D SPLIT-DRIVE AERATOR (S.N. 100 & UP) PARTS LIST

## Parts Main Frame

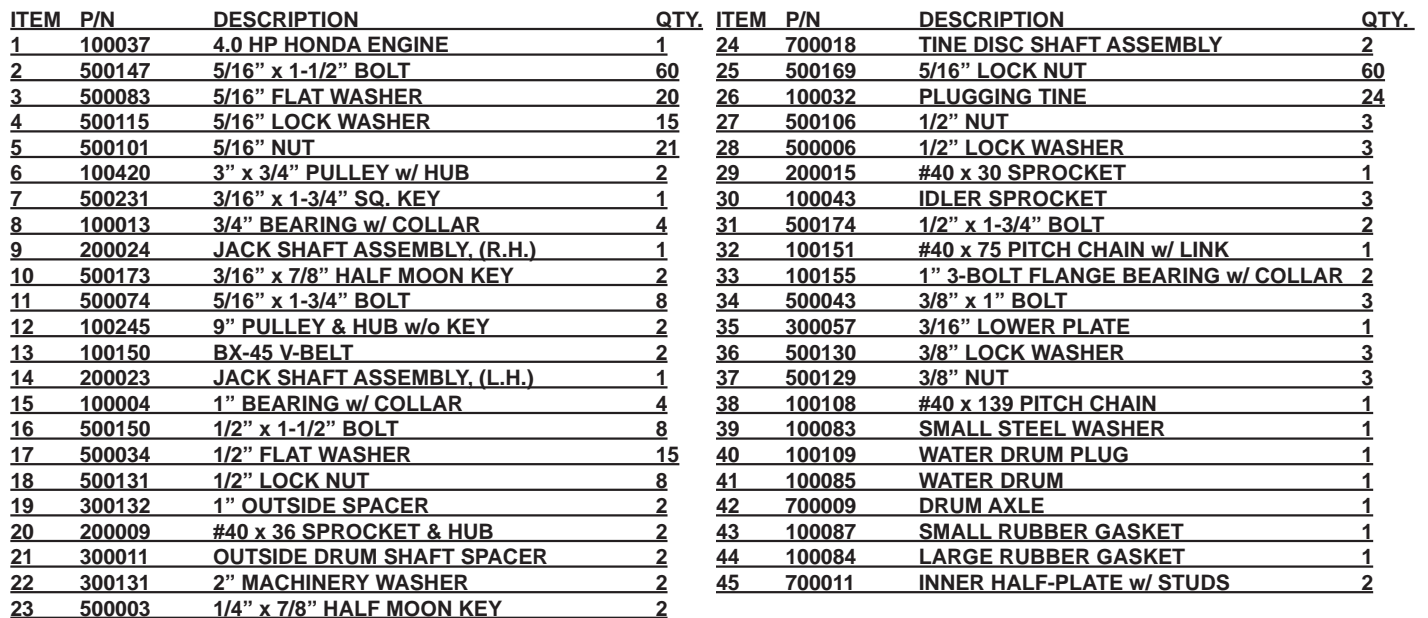
TA-17D  
SPLIT-DRIVE AERATOR



| ITEM | P/N    | DESCRIPTION                | QTY. |
|------|--------|----------------------------|------|
| 1    | 100069 | DECAL, "DANGER"            | 1    |
| 2    | 500083 | 5/16" FLAT WASHER          | 8    |
| 3    | 500140 | 5/16" x 3/4" BOLT          | 3    |
| 4    | 500115 | 5/16" LOCK WASHER          | 8    |
| 5    | 100419 | RUBBER EDGING              | 2    |
| 6    | 400093 | PULLEY GUARD               | 1    |
| 7    | 100153 | DECAL, "TA-17"             | 2    |
| 8    | 500133 | 5/16" x 1" BOLT            | 1    |
| 9    | 500101 | 5/16" NUT                  | 5    |
| 10   | 500163 | 5/16" x 3/4" CARRIAGE BOLT | 4    |
| 11   | 500169 | 5/16" LOCK NUT             | 4    |
| 12   | 400393 | CHAIN GUARD, (L.H.)        | 1    |
| 13   | 400394 | CHAIN GUARD, (R.H.)        | 1    |
| 14   | 500134 | 3/8" x 1-1/4" BOLT         | 2    |
| 15   | 400086 | CLUTCH ARM, (R.H.)         | 1    |
| 16   | 500042 | 3/8" FLAT WASHER           | 12   |
| 17   | 500041 | 3/8" LOCK NUT              | 2    |
| 18   | 500029 | 1/4" x 3/4" BOLT           | 4    |
| 19   | 500136 | 1/4" NUT                   | 4    |
| 20   | 500001 | 1/4" x 28 GREASE FITTING   | 2    |
| 21   | 500137 | 1/4" LOCK WASHER           | 4    |
| 22   | 500011 | 3/16" x 1" SQ. KEY         | 4    |
| 23   | 100021 | BRASS BUSHING              | 4    |
| 24   | 400021 | IDLER ARM, (R.H.)          | 1    |
| 25   | 500129 | 3/8" NUT                   | 7    |
| 26   | 500130 | 3/8" LOCK WASHER           | 4    |
| 27   | 100010 | IDLER PULLEY               | 2    |
| 28   | 500091 | 3/8" x 2" BOLT             | 2    |
| 29   | 400087 | IDLER ARM, (L.H.)          | 1    |
| 30   | 400020 | CLUTCH ARM, (L.H.)         | 1    |
| 31   | 500170 | 3/8" x 4-1/2" BOLT         | 3    |
| 32   | 500114 | 5/16" x 2-1/4" TAP BOLT    | 4    |

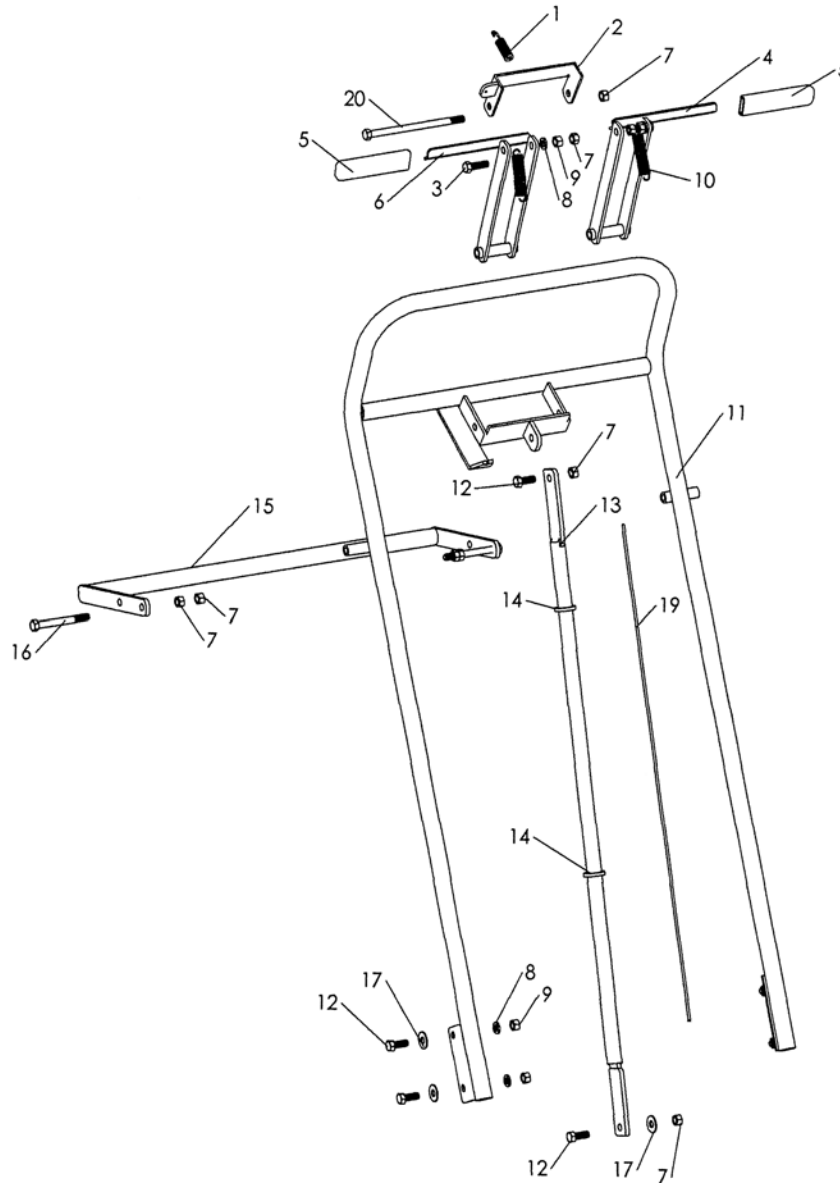
| ITEM | P/N    | DESCRIPTION                   | QTY. |
|------|--------|-------------------------------|------|
| 33   | 300049 | CHAIN TIGHTENING PLATE        | 4    |
| 34   | 300007 | LINKAGE ARM                   | 2    |
| 35   | 400080 | TA-17D MAIN FRAME             | 1    |
| 36   | 100074 | DECAL, "CLASSEN"              | 3    |
| 37   | 400056 | WEIGHT BAR                    | 1    |
| 38   | 400015 | SPRING ARM                    | 2    |
| 39   | 100040 | FRAME SPRING                  | 2    |
| 40   | 100031 | 8" REAR TIRE ASSEMBLY         | 2    |
| 41   | 200007 | KEYED SHAFT                   | 1    |
| 42   | 300009 | WEIGHT STOP FLAT              | 1    |
| 43   | 500194 | 3/4" FLAT WASHER              | 6    |
| 44   | 500164 | 1/4" FENDER WASHER            | 2    |
| 45   | 400013 | REAR AXLE SUPPORT ARM, (L.H.) | 1    |
| 46   | 300006 | PIVOT FLAT                    | 2    |
| 47   | 500131 | 1/2" LOCK NUT                 | 12   |
| 48   | 500135 | 1/2" x 2-1/2" BOLT            | 2    |
| 49   | 300005 | BUSHING SPACER                | 2    |
| 50   | 500149 | 1/2" x 2" BOLT                | 2    |
| 51   | 500106 | 1/2" NUT                      | 4    |
| 52   | 500006 | 1/2" LOCK WASHER              | 2    |
| 53   | 500174 | 1/2" x 1-3/4" BOLT            | 2    |
| 54   | 500053 | 5/8" FLAT WASHER              | 2    |
| 55   | 500016 | 5/32" x 1-1/4" COTTER PIN     | 2    |
| 56   | 100096 | DECAL, "ALL GUARDS" (N.S.)    | 1    |
| 57   | 100157 | DECAL, "SPLIT-DRIVE" (N.S.)   | 2    |
| 58   | 100055 | DECAL, "SERIAL NUMBER" (N.S.) | 1    |
| 59   | 100257 | DECAL, "PATENT" (N.S.)        | 1    |
| 60   | 100073 | LUBRICATION TAG (N.S.)        | 1    |
| 61   | 500034 | 1/2" FLAT WASHER              | 6    |
| 62   | 500043 | 3/8" x 1" BOLT                | 1    |
| 63   | 400014 | REAR AXLE SUPPORT ARM, (R.H.) | 1    |

## TA-17D SPLIT-DRIVE AERATOR



# Parts Handle and Control Assembly

## TA-17D SPLIT-DRIVE AERATOR



| ITEM | P/N    | DESCRIPTION                       | QTY |
|------|--------|-----------------------------------|-----|
| 1    | 100035 | THROTTLE CABLE CONNECTING SPRING  | 1   |
| 2    | 400088 | THROTTLE ARM                      | 1   |
| 3    | 500134 | 3/8" x 1-1/4" BOLT                | 2   |
| 4    | 400082 | CONTROL HANDLE, (L.H.)            | 1   |
| 5    | 100007 | RUBBER GRIP                       | 2   |
| 6    | 400091 | CONTROL HANDLE, (R.H.)            | 1   |
| 7    | 500041 | 3/8" LOCK NUT                     | 9   |
| 8    | 500130 | 3/8" LOCK WASHER                  | 6   |
| 9    | 500129 | 3/8" NUT                          | 6   |
| 10   | 100034 | CLUTCH CABLE SPRING               | 2   |
| 11   | 400018 | MAIN HANDLE                       | 1   |
| 12   | 500043 | 3/8" x 1" BOLT                    | 6   |
| 13   | 300054 | HANDLE BRACE                      | 1   |
| 14   | 100020 | PLASTIC TIE                       | 2   |
| 15   | 400017 | LOWERING HANDLE                   | 1   |
| 16   | 500170 | 3/8" x 3-1/2" BOLT                | 2   |
| 17   | 500042 | 3/8" FLAT WASHER                  | 4   |
| 18   | 200020 | CLUTCH CABLE (NOT SHOWN)          | 2   |
| 19   | 100149 | THROTTLE CABLE w/ CONNECTING ENDS | 1   |
| 20   | 500162 | 3/8" x 6-1/2" BOLT                | 1   |



**1028 Street Road • P.O. Box 38  
Southampton, PA 18966 U.S.A.**

**TWO YEAR LIMITED WARRANTY**  
Effective April 1, 2007

For the period of two years from the date of purchase, Schiller Grounds Care, Inc. will repair or replace for the original purchaser free of charge, any part or parts found upon the examination of our factory authorized service station, or by the factory in Norfolk, Nebraska, to be defective in material or workmanship. All transportation charges on parts submitted for repair or replacement under this warranty shall be borne by the purchaser. This warranty does not include engines or engine parts, tires, batteries, or gearboxes that are covered under separate warranties furnished by their manufacturer or supplier, nor does it include normal maintenance parts, including but not limited to, spark plugs, points, filters, blades, and lubricants. All service under this warranty will be furnished or performed by our factory authorized service stations. There is no other expressed warranty. Implied warranties, including those of merchantability and fitness for a particular purpose, are limited to two years from the date of purchase and to the extent permitted by law, any and all implied warranties are excluded. The above remedy of repair and replacement of defective parts is the purchaser's exclusive remedy for any defect, malfunction or breach of warranty. Liability for incidental or consequential damages under any and all warranties is excluded to the extent permitted by law.

**NORMAL RESPONSIBILITIES OF THE SELLER AND THE USER**

1. The Distributor or Dealer is responsible for the proper assembly and preparation of the product for delivery to the end user.
2. The User is responsible for reading the Manual and Instructions.
3. The User is responsible for proper operation and maintenance as described in the manual.
4. The User is responsible for the replacement of wear items such as blades, belts, tires, batteries, etc.
5. The User is responsible for damage due to improper operation and maintenance, as well as abuse.

All claims must be received by the factory 30 days after the end of the warranty period to receive warranty consideration.

See the complete line of Turf Care Products

from

***CLASSEN***<sup>®</sup>

**COMPACT AERATORS**

CA-18H

CA-18B

**STAND ON AERATOR**

SA-25

**SPLIT DRIVE AERATORS**

TA-25D

TA-17D

**TURF AERATORS**

TA-19D

TA-19B

TA-26D

**RECIPROCATING AERATORS**

RA-21H

RA-21B

RAS-21H

RAS-21B

**TOW/3PT AERATORS**

48RT

60RT

**TURF SEEDERS**

TS-20H

TS-20B

TSS-20H

TSS-20B

**TRAILERS**

AST

**TURF RAKES**

TR-20H

TR-20B

TRS-20H

TRS-20B

TR-20RH

TR-20RB

**SOD CUTTERS**

SC-18/5.5

SC-18/8.0

**HYDRO-DRIVE SOD CUTTERS**

SCHV-18/5.5

SCHV-18/8.0

Classen reserves the right to make changes or add improvements to its products at any time without incurring any obligation to make such changes to products manufactured previously. Classen, or its distributors and dealers, accept no responsibility for variations which may be evident in the actual specifications of its products and the statements and descriptions contained in this publication.