

# PARTS MANUAL

## AERATOR MODELS:

### CA-18H, CA-18B

Compact Aerator



# ***CLASSEN***<sup>®</sup>

C100321

1028 Street Road • P.O. Box 38  
Southampton, PA 18966 U.S.A.  
Ph. (877)596-6337

## TABLE OF CONTENTS

INTRODUCTION .....	1
Thank You .....	1
Read This Manual .....	1
Warranty .....	1
Measurements .....	1
Serial Numbers .....	1
Ordering Part .....	1
Directions .....	1
OWNERS RECORD .....	1
PRE-DELIVERY CHECK LIST .....	1
DELIVERY CHECK LIST .....	1
CA-18 COMPACT AERATOR .....	2
Parts Main Frame .....	3
Parts Power Train and Tine Rotor Assembly .....	4
TWO YEAR LIMITED WARRANTY .....	5

## INTRODUCTION

### THANK YOU

Thank you for purchasing a CLASSEN Aerator

### READ THIS MANUAL

Read this manual carefully in its entirety. It contains safety, operating, maintenance, and adjustment instructions for your Aerator. By following the operating and maintenance instructions you will prolong the life of your equipment and maintain its maximum efficiency. Failure to do so could result in personal injury or equipment damage.

This manual should be considered a permanent part of your Aerator and should remain with it if you sell it.

### WARRANTY

Refer to last page.

### MEASUREMENTS

U.S. Units of measure are used in this manual.

### SERIAL NUMBERS

Write frame and engine serial numbers, plus model numbers in "Owner's Record" section below. You may need these numbers when you order parts. The serial number stick plate is located on the right rear of the Aerator frame.

### ORDERING PARTS

When ordering parts, always give the serial number and model of your Aerator as well as the quantity, part number and description of the part needed.

### DIRECTIONS

"Right Hand" and "Left Hand" sides of the Aerator are determined by facing the "back" of the Aerator as you would operate the machine.

## OWNER'S RECORD

DATE PURCHASED \_\_\_\_\_

AERATOR MODEL NUMBER \_\_\_\_\_

AERATOR SERIAL NUMBER \_\_\_\_\_

ENGINE MODEL NUMBER \_\_\_\_\_

ENGINE SERIAL NUMBER \_\_\_\_\_

## PRE-DELIVERY CHECK LIST

Check the following before you deliver the Aerator to the customer.

1. Guards and shields fastened in place.
2. Decals fastened and legible.
3. Weight bar installed.
4. Gas lever on engine turned on.
5. All lubrication points greased.
6. 6:1 gearbox oil level.
7. Engine oil level.
8. Air cleaner.
9. Touch up scratches.
10. Chain(s) tight.
11. Lowering handle working properly.
12. Control handle(s) working to tighten V-belt(s).
13. Add fuel, start engine, test run.

DATE SET UP \_\_\_\_\_/\_\_\_\_\_/\_\_\_\_\_

## DELIVERY CHECK LIST

Review the operators manual with the customer.

1. Schiller Grounds Care, Inc. warranty.
2. Safe operation and service.
3. How to use controls.
4. Operating the machine correctly.
5. Transporting the Aerator.
6. Correct fuel and lubricants.
7. Daily and periodic inspections.
8. Changing oil after break-in period.
9. Servicing the Aerator regularly and correctly.
10. Schiller Grounds Care, Inc. parts and service.
11. Give the customer the operators manual and encourage customer to read it.

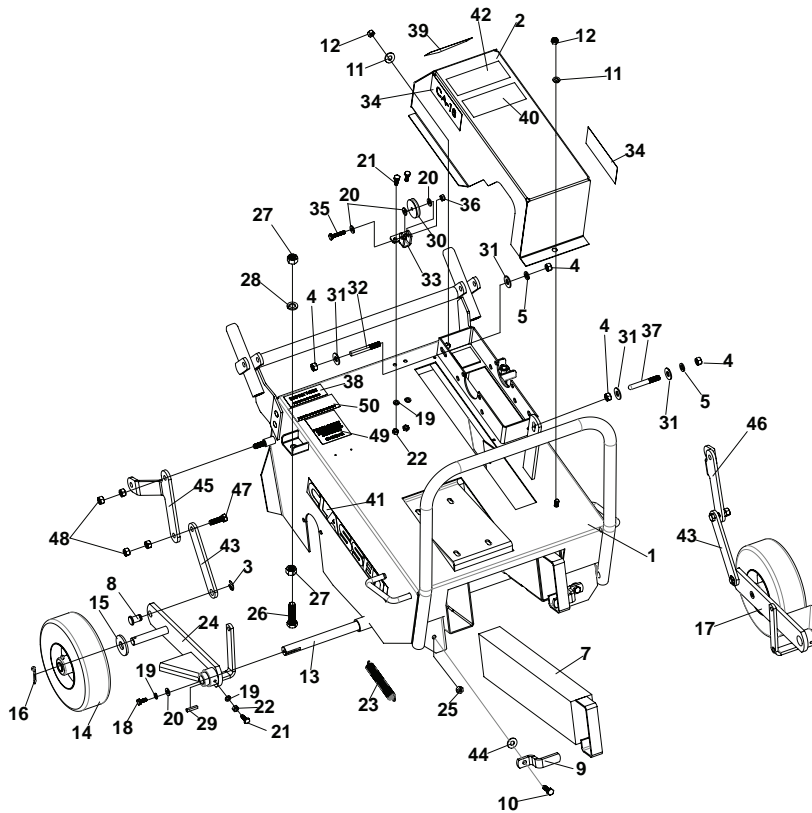
DATE DELIVERED \_\_\_\_\_/\_\_\_\_\_/\_\_\_\_\_

SIGNATURE \_\_\_\_\_

# CA-18 COMPACT AERATOR (S.N. 1062 & UP) PARTS LIST

## Parts Main Frame

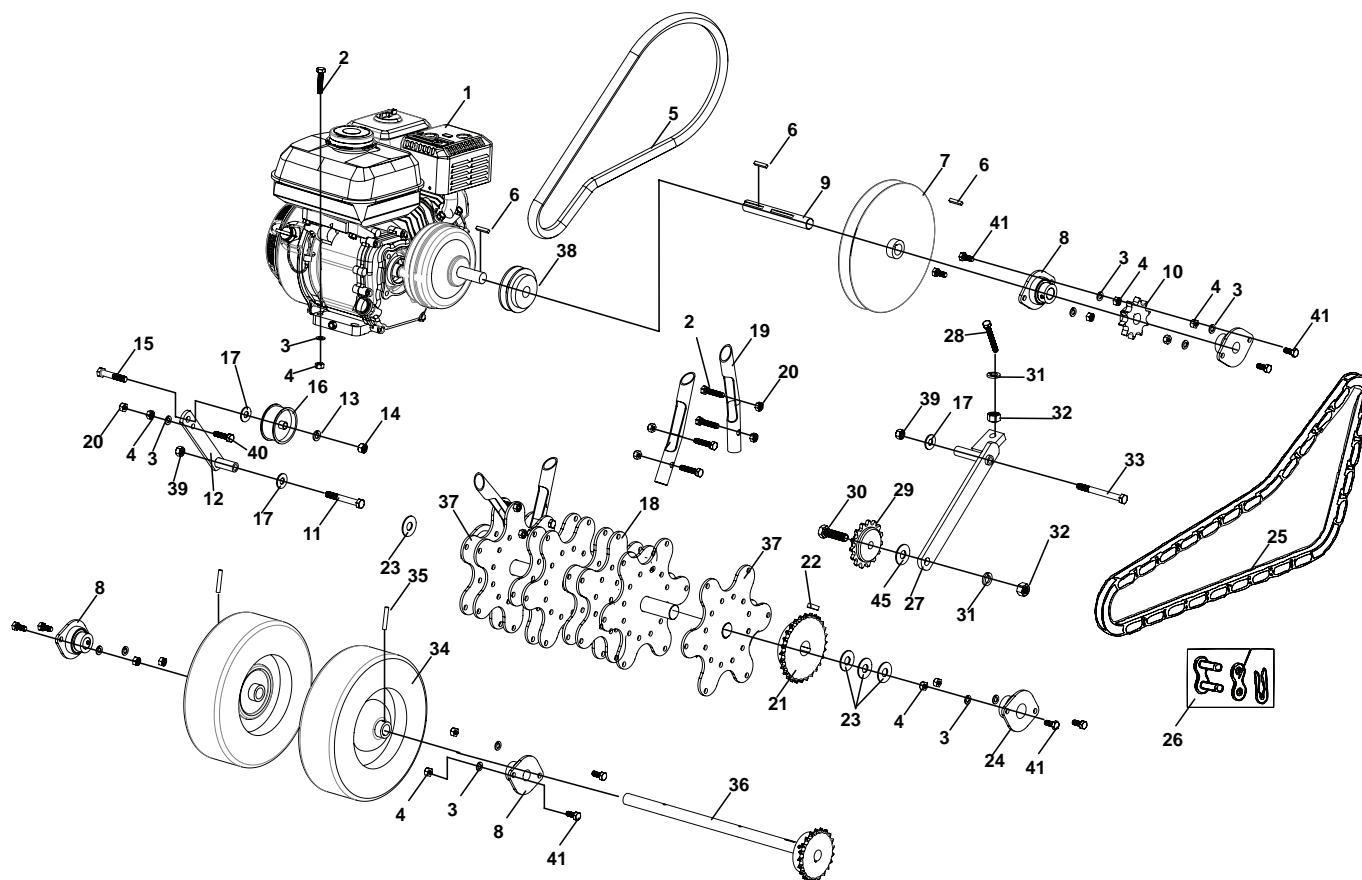
### CA-18 COMPACT AERATOR



ITEM	P/N	DESCRIPTION	QTY.	ITEM	P/N	DESCRIPTION	QTY.
1	C400390	WLD MNT-MAIN FRAME, CA-18	1	29	C500011	3/16" SQUARE KEY	2
2	C400138	PULLEY GUARD	1	30	C100270	PULLEY, CLUTCH CABLE SUPPORT	1
3	C500078	"E" RING	2	31	C500042	3/8" FLAT WASHER	4
4	C500129	3/8" NUT	8	32	C500261	BOLT-V BELT GUIDE 3/8 X 2-3/4"	1
5	C500130	3/8" LOCK WASHER	6	33	C300107	PULLEY MOUNTING BRACKET	1
6	C500043	3/8" x 1" BOLT	4	34	C100256	DECAL, "CA-18"	2
7	C400126	WEIGHT BAR	2	35	C500218	1/4" x 1-1/4" BOLT	1
8	C300080	1/2" WHEEL PIVOT PIN	2	36	C500139	1/4" LOCK NUT	1
9	C300081	WEIGHT STOP	2	37	C500260	BOL-JACKSHAFT GUILD 3/8X2 3/4"	1
10	C500133	5/16" x 1" BOLT	2	38	C100055	DECAL, "SERIAL NUMBER"	1
11	C500115	5/16" LOCK WASHER	2	39	C100069	DECAL, "DANGER"	1
12	C500101	5/16" NUT	2	40	C100559	LUBRICATION DECAL	1
13	C600027	KEYED SHAFT	1	41	C100074	DECAL, "CLASSEN"	2
14	C100031	REAR TIRE, 8"	2	42	C100096	DECAL, "ALL GUARDS"	1
15	C500053	5/8" FLAT WASHER	4	43	C300079	WHEEL PIVOT FLAT	2
16	C500016	5/32" x 1-1/4" COTTER PIN	2	44	C500083	5/16" FLAT WASHER	2
17	C400142	ARM. L.H. REAR AXLE SUPPORT	1	45	C400132	PIVOT-RH LINKAGE	1
18	C500071	1/4" x 5/8" FINE BOLT	2	46	C400133	PIVOT-LH LINKAGE	1
19	C500137	1/4" LOCK WASHER	6	47	C500134	BOLT 3/8-16 x 1-1/4	2
20	C500164	1/4" FENDER WASHER	4	48	C500041	3/8" LOCKNUT	8
21	C500029	1/4" x 3/4" BOLT	4	49	C100504	SPARK ARRESTOR DECAL	1
22	C500136	1/4" NUT	4	50	C100505	CARB APPROVAL DECAL	1
23	C100250	SPRING	2				
24	C400141	ARM. R.H. REAR AXLE SUPPORT	1				
25	C500169	5/16" LOCK NUT	2				
26	C500149	1/2" x 2" BOLT	2				
27	C500106	1/2" NUT	4				
28	C500006	1/2" LOCK WASHER	2				

# Parts Power Train and Tine Rotor Assembly

## CA-18 COMPACT AERATOR

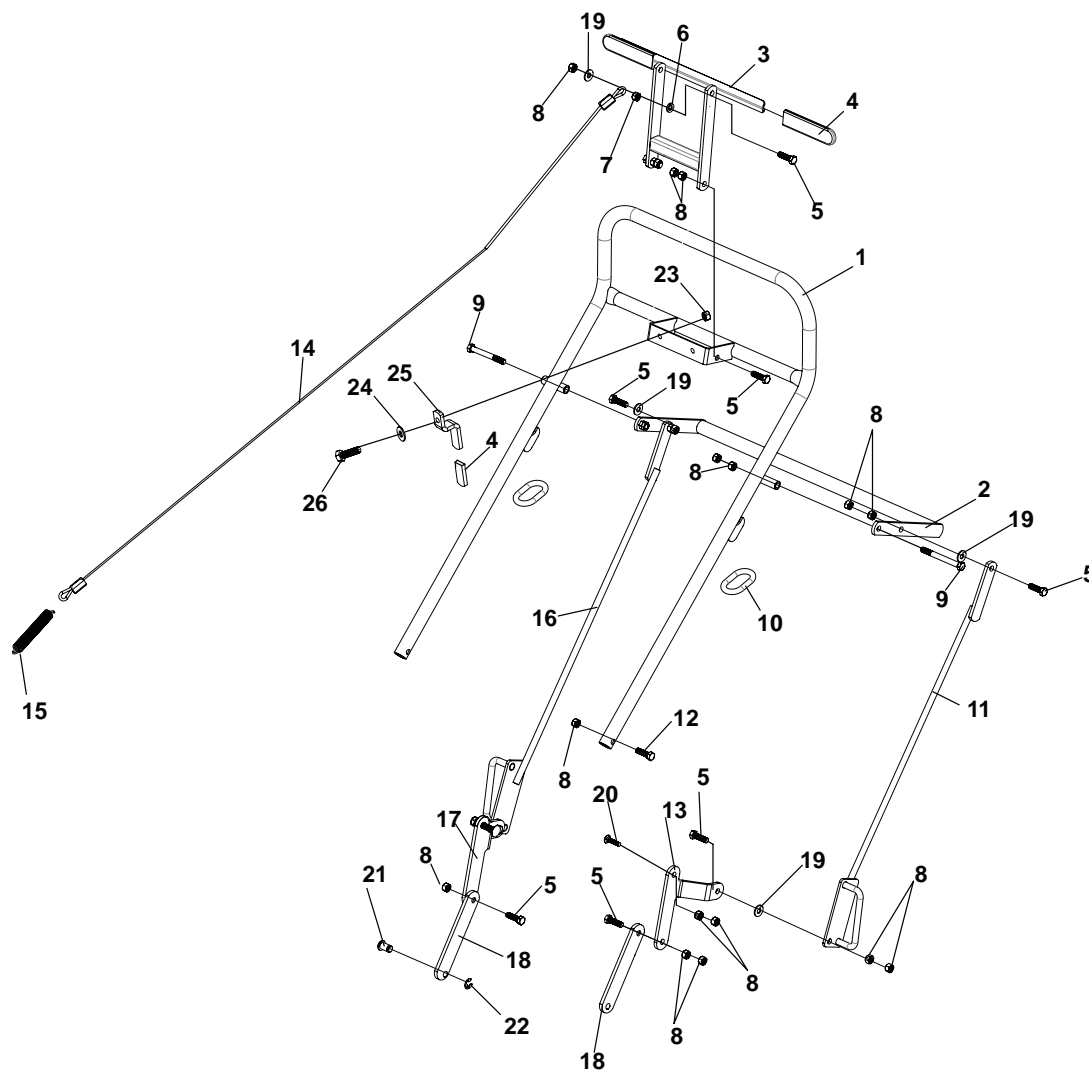


ITEM	P/N	DESCRIPTION	QTY.
1	C100037	HONDA ENGINE 4.0 HP	1
	C100482	ENGINE, BRIGGS & STRATTON 3.5HP	
2	C500147	5/16" x 1-1/2" BOLT	52
3	C500115	5/16" LOCK WASHER	19
4	C500101	5/16" NUT	19
5	C100255	BX 38 V-BELT	1
6	C500011	3/16" SQUARE KEY	3
7	C100245	PULLEY & HUB w/o KEY, AB x 3/4" x 9"	1
8	C100247	BEARING, PLATED FLANGE w/ COLLAR, 3/4" 2 BOLT	4
9	C200034	JACKSHAFT, 3/4"	1
10	C100252	SPROCKET, #40 B12 x 3/4"	1
11	C500154	3/8" x 2 3/4" BOLT	1
12	C400136	ARM, BELT TIGHTENER	1
13	C500130	3/8" LOCK WASHER	1
14	C500129	3/8" NUT	1
15	C500091	3/8" x 2" BOLT	1
16	C100010	IDLER PULLEY	1
17	C500042	3/8" FLAT WASHER	3
18	C700023	TINE SHAFT ASSEMBLY	1
19	C100032	TINE	24
20	C500169	5/16" LOCK NUT	49
21	C100253	SPROCKET, #40 B27 x 1"	1
22	C500003	1/4" x 7/8" HALF MOON KEY	1
23	C500161	1" MACHINE WASHER	4

ITEM	P/N	DESCRIPTION	QTY.
24	C100248	BEARING, PLATED FLANGE w/ COLLAR, 1" 2 BOLT	2
25	C100254	CHAIN, #40 x 109 PITCH	1
26	C100025	CONNECTING LINK	1
27	C400137	ARM, CHAIN TIGHTENER	1
28	C500215	1/2"-13 X 3" BOLT	1
29	C100043	IDLER SPROCKET	1
30	C500174	1/2" x 1-3/4" BOLT	1
31	C500006	1/2" LOCK WASHER	2
32	C500106	1/2" NUT	2
33	C500175	3/8" x 3-3/4" BOLT	1
34	C100246	TIRE & WHEEL, 10 x 3W	2
35	C500172	ROLL PIN, 1/4" x 1-1/2"	2
36	C200053	AXLE, FRONT DRIVE w/ SPROCKET	1
37	C700017A	TINE DISC	2
38	C100038	PULLEY w/ 3/4" HUB, 3/4" x 3"	1
39	C500041	3/8" LOCK NUT	2
40	C500073	5/16" X 1-1/4" BOLT	1
41	C500140	5/16" x 3/4" BOLT	12
42	C100263	DEFLECTOR, HONDA ENG. (NOT SHOWN)	1
43	C100264	DEFLECTOR, B&S ENG. (NOT SHOWN)	1
44	C100265	SCREWS, DEFLECTOR (NOT SHOWN)	2
45	C500034	1/2" FLAT WASHER	1

# Parts Handle and Control

## CA-18 COMPACT AERATOR



ITEM	P/N	DESCRIPTION	QTY.
1	C400128	MAIN HANDLE	1
2	C400017	LOWERING HANDLE	1
3	C400180	CONTROL HANDLE	1
4	C100007	RUBBER GRIP	2
5	C500134	3/8" x 1-1/4" BOLT	9
6	C500130	3/8" LOCK WASHER	1
7	C500129	3/8" NUT	1
8	C500041	3/8" LOCK NUT	27
9	C500178	3/8" x 3-1/4" BOLT	2
10	C100251	HANDLE LOCK RING	2
11	C400130	ARM, L.H. LINKAGE	1
12	C500091	3/8" x 2" BOLT	2
13	C400133	LH LINKAGE PIVOT	1
14	C200035	CLUTCH CABLE	1
15	C100034	SPRING	1

ITEM	P/N	DESCRIPTION	QTY.
16	C400129	ARM, R.H. LINKAGE	1
17	C400132	RH LINKAGE PIVOT	1
18	C300079	FLAT, WHEEL PIVOT	2
19	C500042	3/8" FLAT WASHER	5
20	C500256	3/8" x 2-1/4" BOLT	2
21	C300080	PIN, 1/2" WHEEL PIVOT	2
22	C500078	E-RING	2
23	C500139	NUT, 1/4" LOCK	1
24	C500088	WASHER, 1/4" FLAT	1
25	C300081	WEIGHT STOP	1
26	C500267	BOLT, 1/4" X 1"	1



**1028 Street Road • P.O. Box 38  
Southampton, PA 18966 U.S.A.**

**TWO YEAR LIMITED WARRANTY**  
Effective April 1, 2007

For the period of two years from the date of purchase, Schiller Grounds Care, Inc. will repair or replace for the original purchaser free of charge, any part or parts found upon the examination of our factory authorized service station, or by the factory in Norfolk, Nebraska, to be defective in material or workmanship. All transportation charges on parts submitted for repair or replacement under this warranty shall be borne by the purchaser. This warranty does not include engines or engine parts, tires, batteries, or gearboxes that are covered under separate warranties furnished by their manufacturer or supplier, nor does it include normal maintenance parts, including but not limited to, spark plugs, points, filters, blades, and lubricants. All service under this warranty will be furnished or performed by our factory authorized service stations. There is no other expressed warranty. Implied warranties, including those of merchantability and fitness for a particular purpose, are limited to two years from the date of purchase and to the extent permitted by law, any and all implied warranties are excluded. The above remedy of repair and replacement of defective parts is the purchaser's exclusive remedy for any defect, malfunction or breach of warranty. Liability for incidental or consequential damages under any and all warranties is excluded to the extent permitted by law.

**NORMAL RESPONSIBILITIES OF THE SELLER AND THE USER**

1. The Distributor or Dealer is responsible for the proper assembly and preparation of the product for delivery to the end user.
2. The User is responsible for reading the Manual and Instructions.
3. The User is responsible for proper operation and maintenance as described in the manual.
4. The User is responsible for the replacement of wear items such as blades, belts, tires, batteries, etc.
5. The User is responsible for damage due to improper operation and maintenance, as well as abuse.

All claims must be received by the factory 30 days after the end of the warranty period to receive warranty consideration.

See the complete line of Turf Care Products  
from

***CLASSEN***<sup>®</sup>

**COMPACT AERATORS**

CA-18H  
CA-18B

**STAND ON AERATOR**

SA-25

**SPLIT DRIVE AERATORS**

TA-25D  
TA-17D

**TURF AERATORS**

TA-19D  
TA-19B  
TA-26D

**RECIPROCATING AERATORS**

RA-21H  
RA-21B  
RAS-21H  
RAS-21B

**TOW/3PT AERATORS**

48RT  
60RT

**TURF SEEDERS**

TS-20H  
TS-20B  
TSS-20H  
TSS-20B

**TRAILERS**

AST

**TURF RAKES**

TR-20H  
TR-20B  
TRS-20H  
TRS-20B  
TR-20RH  
TR-20RB

**SOD CUTTERS**

SC-18/5.5  
SC-18/8.0

**HYDRO-DRIVE SOD CUTTERS**

SCHV-18/5.5  
SCHV-18/8.0

Classen reserves the right to make changes or add improvements to its products at any time without incurring any obligation to make such changes to products manufactured previously. Classen, or its distributors and dealers, accept no responsibility for variations which may be evident in the actual specifications of its products and the statements and descriptions contained in this publication.