

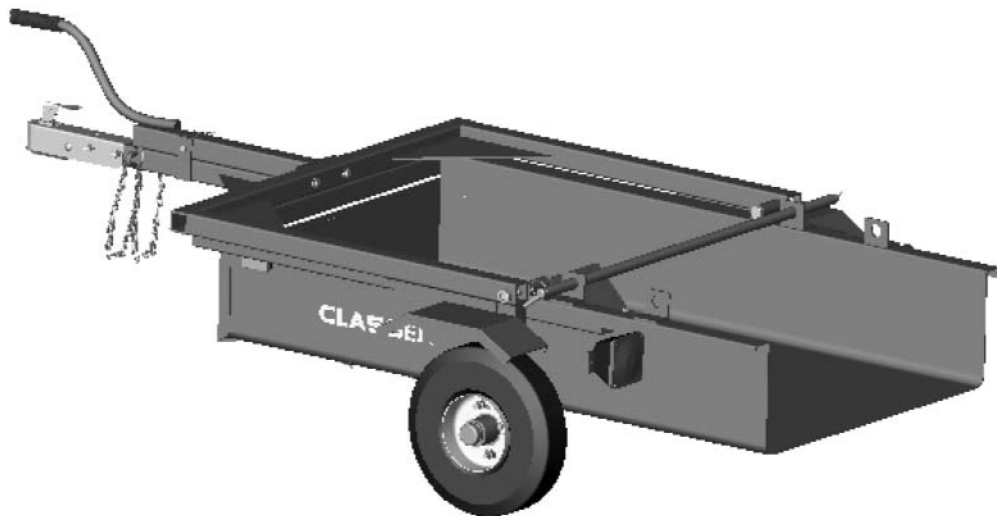
CLASSEN[®] ***TRAILER***

AST TRAILER

(Serial No. 038 & UP)

SAT TRAILER

(Serial No. 254 & UP)



PARTS MANUAL

C100428 Rev A 07-2013

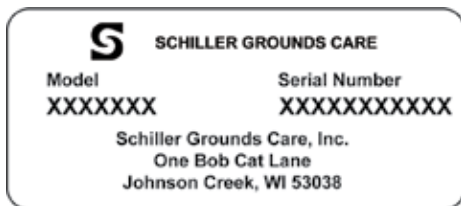
Schiller Grounds Care, Inc.
1028 Street Road • Southampton, PA 18966
Telephone: 1-800-366-6268

NOTICE !!!

Unauthorized modifications may present **extreme** safety hazards to operators and bystanders and could also result in product damage.

Schiller Grounds Care, Inc. strongly warns against, rejects and disclaims any modifications, add-on accessories or product alterations that are not designed, developed, tested and approved by Schiller Grounds Care, Inc. Engineering Department. Any Schiller Grounds Care, Inc. product that is altered, modified or changed in any manner not specifically authorized after original manufacture—including the addition of “after-market” accessories or component parts not specifically approved by Schiller Grounds Care, Inc. will result in the Schiller Grounds Care, Inc. Warranty being voided.

Any and all liability for personal injury and/or property damage caused by any unauthorized modifications, add-on accessories or products not approved by Schiller Grounds Care, Inc. will be considered the responsibility of the individual(s) or company designing and/or making such changes. Schiller Grounds Care, Inc. will vigorously pursue full indemnification and costs from any party responsible for such unauthorized post-manufacture modifications and/or accessories should personal injury and/or property damage result.



MODEL NUMBER: This number appears on sales literature, technical manuals and price lists.

SERIAL NUMBER: This number appears only on your machine. It contains the model number followed consecutively by the serial number. Use this number when ordering parts or seeking warranty information.

Reporting Safety Defects

If you believe that your vehicle has a defect, which could cause serious injury or death, you should immediately contact the National Traffic Safety Administration (NHTSA), in addition to notifying Schiller Grounds Care, Inc.

If the NHTSA receives similar complaints, it may open an investigation, and if it finds that a safety defect exists in a group of vehicles, it may order a recall and remedy campaign. However, the NHTSA cannot become involved in any individual problems between you, your dealer, or Schiller Grounds Care, Inc.

To contact the National Highway Traffic Safety Administration, you may either call the Auto Safety Hotline toll free 1-800-424-9393 or (366-0133 in Washington, DC area) or write to:

NHTSA, US Department of Transportation
400 - 7th Street SW, NSA11
Washington, DC 20590.

You can also obtain other information about motor vehicle Safety from the Hotline.

Thank you and drive safely!

Schiller Grounds Care, Inc.

P/N C100712 Rev A

Schiller Grounds Care, Inc.
1028 Street Road • Southampton, PA 18966
Telephone: 1-800-366-6268

TWO YEAR LIMITED WARRANTY

Effective April 1, 2007

For the period of two years from the date of purchase, Schiller Grounds Care, Inc. . will repair or replace for the original purchaser free of charge, any part or parts found upon the examination of our factory authorized service station, or by the factory in Southampton, PA, to be defective in material or workmanship. All transportation charges on parts submitted for repair or replacement under this warranty shall be borne by the purchaser.

This warranty does not include engines or engine parts, tires, batteries, or gearboxes that are covered under separate warranties furnished by their manufacturer or supplier; nor does it include normal maintenance parts, including but not limited to, spark plugs, points, filters, blades, and lubricants.

All service under this warranty will be furnished or performed by our factory authorized service stations.

There is no other expressed warranty. Implied warranties, including those of merchantability and fitness for a particular purpose, are limited to two years from the date of purchase and to the extent permitted by law, any and all implied warranties are excluded. The above remedy of repair and replacement of defective parts is the purchaser's exclusive remedy for any defect, malfunction or breach of warranty. Liability for incidental or consequential damages under any and all warranties is excluded to the extent permitted by law.

NORMAL RESPONSIBILITIES OF THE SELLER AND THE USER

1. *The Distributor or Dealer is responsible for the proper assembly and preparation of the product for delivery to the end user.*
2. *The User is responsible for reading the Manual and Instructions.*
3. *The User is responsible for proper operation and maintenance as described in the manual.*
4. *The User is responsible for the replacement of wear items such as blades, belts, tires, batteries, etc.*
5. *The User is responsible for damage due to improper operation and maintenance, as well as abuse.*

All claims must be received by the factory 30 days after the end of the warranty period to receive warranty consideration.

CALIFORNIA PROPOSITION 65



WARNING: Cancer and Reproductive Harm - www.P65Warnings.ca.gov.



ADVERTENCIA: Cáncer y Daño Reproductivo - www.65Warnings.ca.gov.

ASSEMBLY

AST/SAT

FIGURE 1

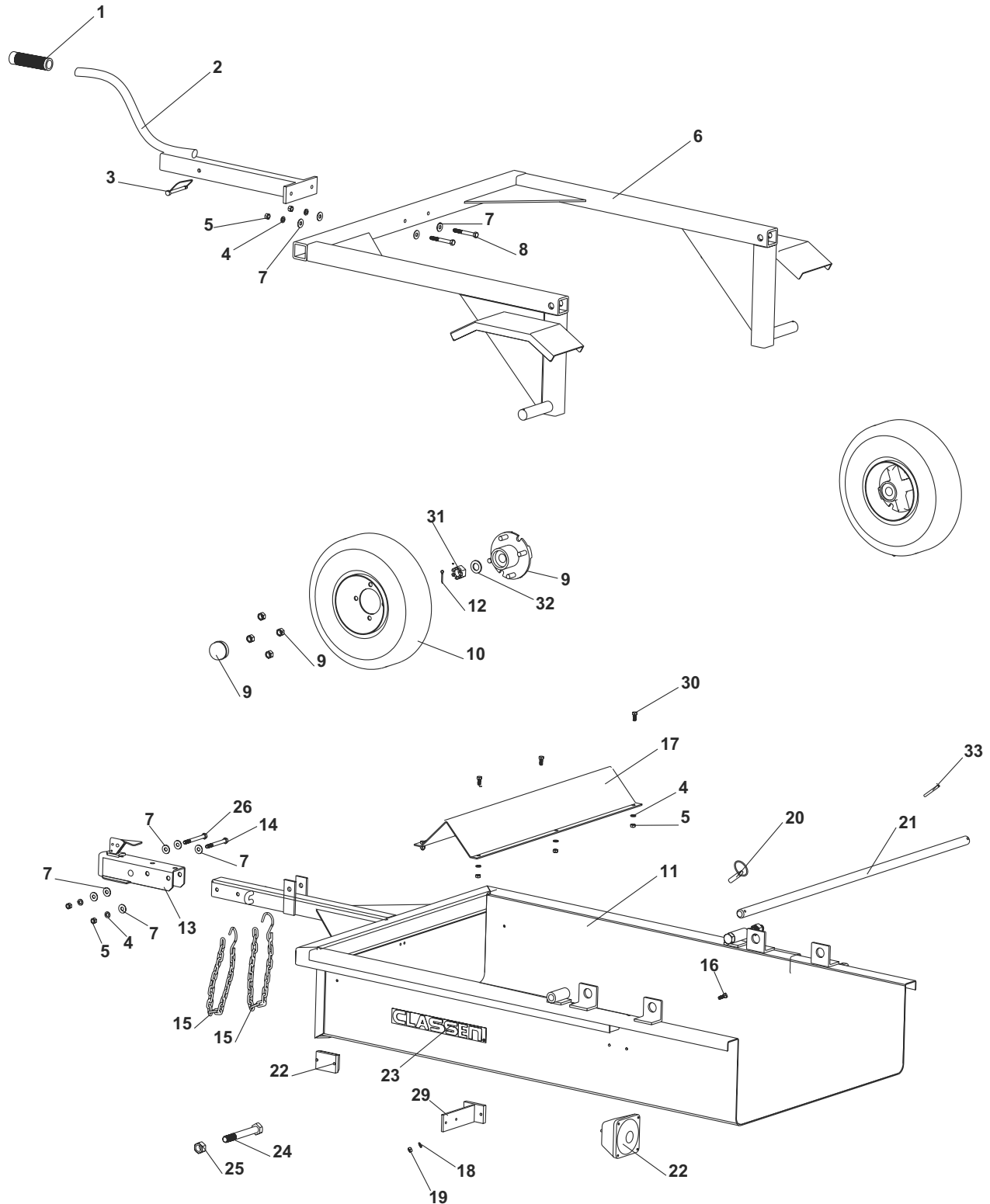


FIGURE 1

ITM	PART NO.	DESCRIPTION	QTY	ITM	PART NO.	DESCRIPTION	QTY
1	C100018	1" RUBBER GRIP	1				
2	4176977	S-TOP FRAME W/ HANDL	1				
3	C100346	3/8" SNAP LOCKPIN	1				
4	C500130	3/8" LOCK WASHER	10				
5	C500129	3/8" NUT	10				
6	C400191	SAT TOP FRAME w/FENDERS	1				
6	4169416.17	AST TOP FRAME w/FENDERS	1				
7	C500042	3/8" FLAT WASHER	10				
8	C500159	3/8" x 3" BOLT	2				
9	C100313	HUBS-4-BLT w/BRNGS, NUTS	2				
10	C100338	ASSY-4.80-8 LR SPORT TRL	2				
11	C400189	SAT MAIN BODY	1				
11	C400190	AST MAIN BODY	1				
12	C500062	1/8" x 1-1/4" COTTER PIN	2				
13	C100136	2" COUPLER	1				
14	C500178	3/8" x 3-1/4" BOLT	1				
15	C100347	CHAINS w/HOOKS	2				
16	C500029	1/4"-20 x 3/4" BOLT	4				
17	C400194	SAT INNER V-STOP	1				
17	C400195	AST INNER V-STOP	1				
18	C500137	1/4" LOCK WASHER	4				
19	C500136	1/4" NUT	4				
20	C100158	1/4" LYNCH PIN	1				
21	C300112	SAT PIN w/1/4" PIN	1				
21	C300113	AST PIN w/1/4" PIN	1				
22	C100159	LIGHT KIT ASSEMBLY	1				
23	4170118	DECAL, "CLASSEN"	2				
24	C500221	3/4" x 6" BOLT	2				
25	C500222	3/4" LOCK NUT	2				
26	C500175	3/8" x 3-3/4" BOLT	1				
27*	C100308	3/8" LANYARD	2				
28*	C100267	DECAL, "CAP. 500 LBS."	1				
29	4169526.17	WLDMT-BRKT LIGHT	2				
30	C500043	3/8-16 X 1" BOLT	6				
31	99-E35	NUT-CASTLE 3/4-16 NF ZP	2				
32	64163-110	WSHR-.81 X 1.46 X .18	2				
33	C500297	PIN-ROLL 1/4 -1 3/4	1				
34*	30-035	TERMINAL-EYE 3/8 (14-16GA)	1				

*NOT ILLUSTRATED

See the complete line of Turf Care Products from

CLASSEN[®]

COMPACT AERATORS

CA-18H
CA-18B

STAND ON AERATOR

SA-25

SPLIT DRIVE AERATORS

TA-25D
TA-17D

TURF AERATORS

TA-19D
TA-19B
TA-26D

RECIPROCATING AERATORS

RA-21H
RA-21B
RAS-21H
RAS-21B

TOW/3PT AERATORS

48RT
60RT

TURF SEEDERS

TS-20H
TS-20B
TSS-20H
TSS-20B

TRAILERS

AST

TURF RAKES

TR-20H
TR-20B
TRS-20H
TRS-20B
TR-20RH
TR-20RB

SOD CUTTERS

SC-18/5.5
SC-18/8.0

HYDRO-DRIVE SOD CUTTERS

SCHV-18/5.5
SCHV-18/8.0

Classen reserves the right to make changes or add improvements to its products at any time without incurring any obligation to make such changes to products manufactured previously. Classen, or its distributors and dealers, accept no responsibility for variations which may be evident in the actual specifications of its products and the statements and descriptions contained in this publication.

© 2007 Schiller Grounds Care, Inc.

02/2011