

CLASSEN®

48-RT / 60-RT TOW AERATOR

(48-RT Serial No. 000337 & UP)

(60-RT Serial No. 000161 & UP)

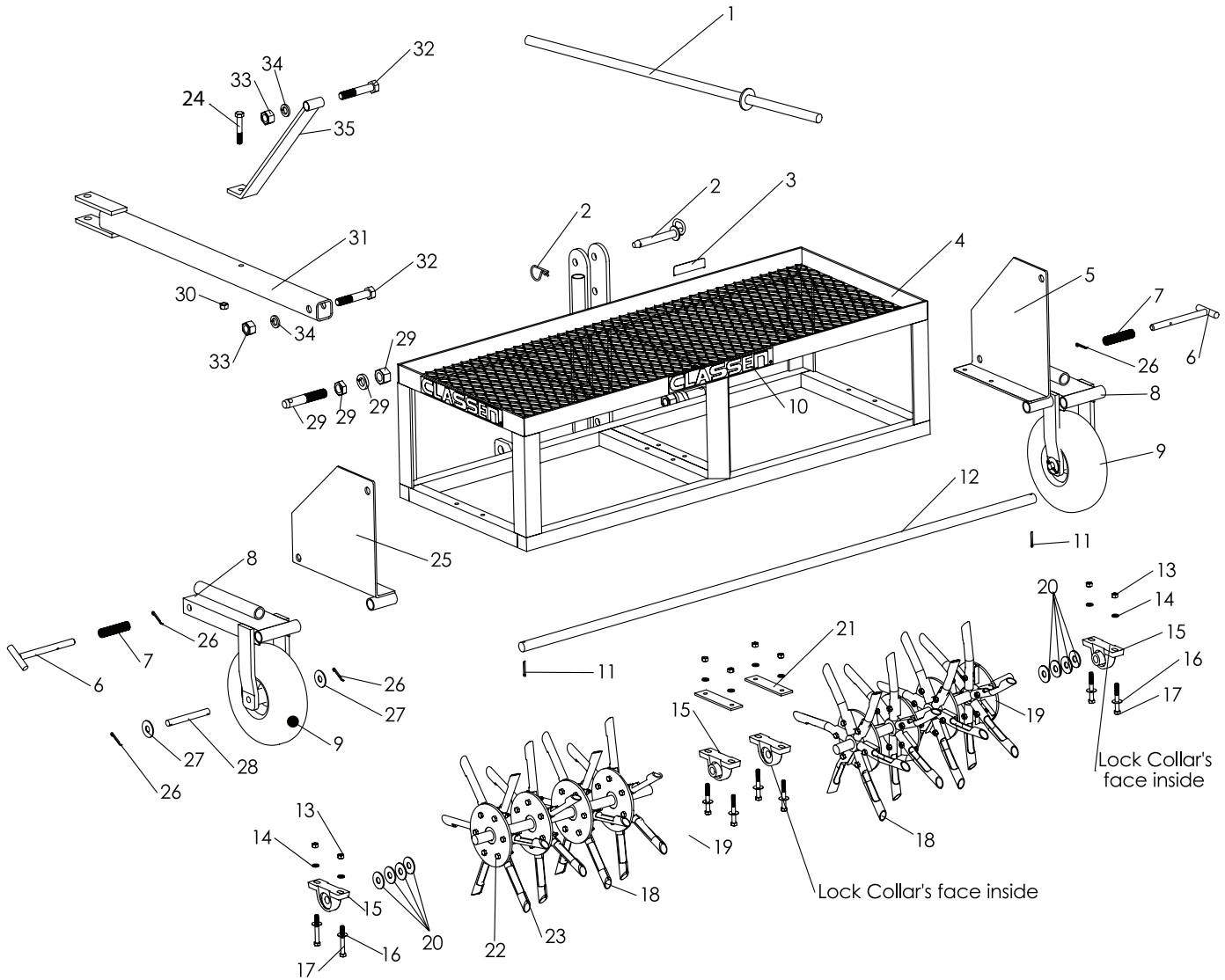


PARTS LIST

P/N C100435 REV B 09/16

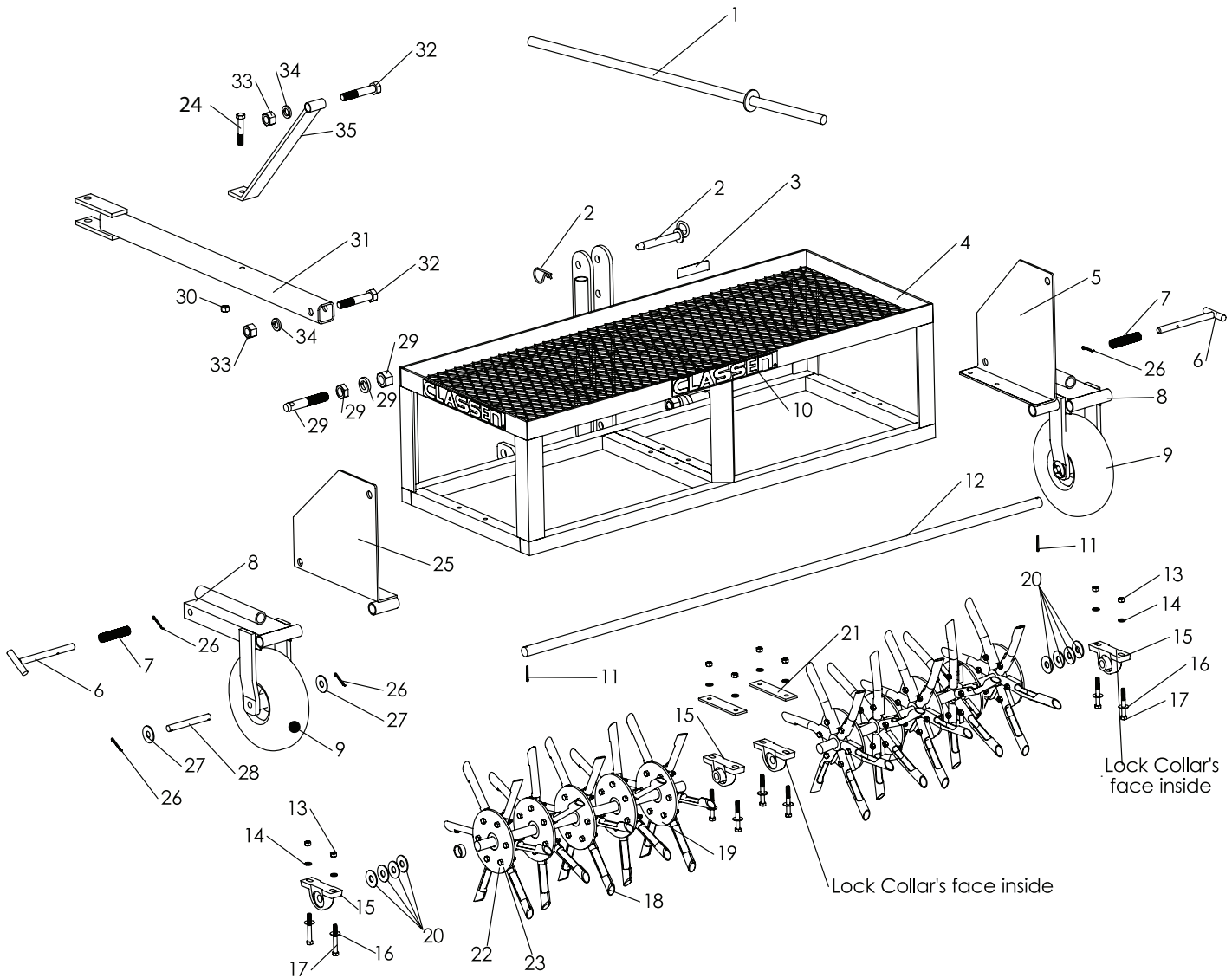
Schiller Grounds Care, Inc.
1028 Street Road • Southampton, PA 18966
Telephone: 1-800-366-6268

48-RT MAIN FRAME ASSEMBLY



ITEM	PART NO.	DESCRIPTION	QTY	ITEM	PART NO.	DESCRIPTION	QTY
1	C400060	LIFT ROD	1	19	C700026	SHAFT-TINE	2
2	C100099	3/4" X 4-1/2" HITCH PIN	1	20	64163-64	WSHR 1.015X1.500X14GA	8
3	835892	DECAL-DANGER	1	21	C300058	SPACER-CNTR BEARING	2
4	C400153	MAIN FRAME	1	22	C500211	BLT-5/16 X 1-3/4 GR8	48
5	C400062	PLATE-SIDE, RH	1	23	C500169	NUT-LOCK 5/16	48
6	C400063	PIN-LATCH	2	24	C500215	BOLT-1/2 X 3	1
7	C100100	SPRING	2	25	C400065	PLATE-SIDE, LH	1
8	C400064	WHEEL FORK	2	26	C500016	PIN-COTTER 5/32 X 1-1/4	6
9	C100103	ASSY-WHL & TIRE 4.10-4	2	27	C500053	WASHER-FLAT 5/8	4
10	C100074	DECAL-CLASSEN	3	28	C300045	AXLE-WHEEL	2
11	C500182	PIN-COTTER 3/16 X 1 1/2	2	29	C100104	PIN-LIFT ARM W/ HRDWR	2
12	C300044	AXLE-WHEEL FORK	1	30	C500131	NUT-LOCK 1/2	1
13	C500129	NUT-3/8	8	31	C400058	HITCH	1
14	C500130	WASHER-3/8 LOCK	8	32	C500213	BOLT-3/4 X 4	2
15	C100101	BEARING-1" PILLOW BLCK	4	33	C500196	NUT-3/4	2
16	C500042	WASHER-FLAT 3/8	8	34	C500195	WASHER-LOCK 3/4	2
17	C500159	BLT-3/8 X 3	8	35	C400059	GUSSET-HITCH	1
18	C100032	TINE	48	* NOT ILLUSTRATED			

60-RT MAIN FRAME ASSEMBLY



ITEM	PART NO.	DESCRIPTION	QTY	ITEM	PART NO.	DESCRIPTION	QTY
1	C400060	LIFT ROD	1	19	C700027	SHAFT-TINE	2
2	C100099	3/4" X 4-1/2" HITCH PIN	1	20	64163-64	WSHR 1.015X1.500X14GA	8
3	835892	DECAL-DANGER	1	21	C300058	SPACER-CNTR BEARING	2
4	C400157	MAIN FRAME	1	22	C500211	BLT-5/16 X 1-3/4 GR8	60
5	C400062	PLATE-SIDE, RH	1	23	C500169	NUT-LOCK 5/16	60
6	C400063	PIN-LATCH	2	24	C500215	BOLT-1/2 X 3	1
7	C100100	SPRING	2	25	C400065	PLATE-SIDE, LH	1
8	C400064	WHEEL FORK	2	26	C500016	PIN-COTTER 5/32 X 1-1/4	6
9	C100103	ASSY-WHL & TIRE 4.10-4	2	27	C500053	WASHER-FLAT 5/8	4
10	C100074	DECAL-CLASSEN	3	28	C300045	AXLE-WHEEL	2
11	C500182	PIN-COTTER 3/16 X 1/1/2	2	29	C100104	PIN-LIFT ARM W/ HRDWR	2
12	C300051	AXLE-WHEEL FORK	1	30	C500131	NUT-LOCK 1/2	1
13	C500129	NUT-3/8	8	31	C400058	HITCH	1
14	C500130	WASHER-3/8 LOCK	8	32	C500213	BOLT-3/4 X 4	2
15	C100101	BEARING-1" PILLOW BLCK	4	33	C500196	NUT-3/4	2
16	C500042	WASHER-FLAT 3/8	8	34	C500195	WASHER-LOCK 3/4	2
17	C500159	BLT-3/8 X 3	8	35	C400059	GUSSET-HITCH	1
18	C100032	TINE	60				

* NOT ILLUSTRATED



Schiller Grounds Care, Inc.
1028 Street Road • Southampton, PA 18966
Telephone: 1-800-366-6268

TWO YEAR LIMITED WARRANTY

Effective April 1, 2007

For the period of two years from the date of purchase, CLASSEN MFG., INC. will repair or replace for the original purchaser free of charge, any part or parts found upon the examination of our factory authorized service station, or by the factory in Norfolk, Nebraska, to be defective in material or workmanship. All transportation charges on parts submitted for repair or replacement under this warranty shall be borne by the purchaser.

This warranty does not include engines or engine parts, tires, batteries, or gearboxes that are covered under separate warranties furnished by their manufacturer or supplier, nor does it include normal maintenance parts, including but not limited to, spark plugs, points, filters, blades, and lubricants.

All service under this warranty will be furnished or performed by our factory authorized service stations.

There is no other expressed warranty. Implied warranties, including those of merchantability and fitness for a particular purpose, are limited to two years from the date of purchase and to the extent permitted by law, any and all implied warranties are excluded. The above remedy of repair and replacement of defective parts is the purchaser's exclusive remedy for any defect, malfunction or breach of warranty. Liability for incidental or consequential damages under any and all warranties is excluded to the extent permitted by law.

NORMAL RESPONSIBILITIES OF THE SELLER AND THE USER

1. The Distributor or Dealer is responsible for the proper assembly and preparation of the product for delivery to the end user.
2. The User is responsible for reading the Manual and Instructions.
3. The User is responsible for proper operation and maintenance as described in the manual.
4. The User is responsible for the replacement of wear items such as blades, belts, tires, batteries, etc.
5. The User is responsible for damage due to improper operation and maintenance, as well as **abuse**.

All claims must be received by the factory 30 days after the end of the warranty period to receive warranty consideration.

See the complete line of Turf Care Products from

CLASSEN[®]

COMPACT AERATORS

CA-18H
CA-18B

STAND ON AERATOR

SA-25

SPLIT DRIVE AERATORS

TA-25D
TA-17D

TURF AERATORS

TA-19D
TA-19B
TA-26D

RECIPROCATING AERATORS

RA-21H
RA-21B
RAS-21H
RAS-21B

TOW/3PT AERATORS

48RT
60RT

TURF SEEDERS

TS-20H
TS-20B
TSS-20H
TSS-20B

TRAILERS

AST

TURF RAKES

TR-20H
TR-20B
TRS-20H
TRS-20B
TR-20RH
TR-20RB

SOD CUTTERS

SC-18/5.5
SC-18/8.0

HYDRO-DRIVE SOD CUTTERS

SCHV-18/5.5
SCHV-18/8.0

Classen reserves the right to make changes or add improvements to its products at any time without incurring any obligation to make such changes to products manufactured previously. Classen, or its distributors and dealers, accept no responsibility for variations which may be evident in the actual specifications of its products and the statements and descriptions contained in this publication.