

# **PARTS MANUAL**

## **AERATOR MODEL:**

### **TA-17DE**

**Split Drive Aerators**



# ***CLASSEN***<sup>®</sup>

C100544

1028 Street Road • P.O. Box 38  
Southampton, PA 18966 U.S.A.  
Ph. (877)569-6337

# TABLE OF CONTENTS

INTRODUCTION .....	1
Thank You .....	1
Read This Manual .....	1
Warranty .....	1
Measurements .....	1
Serial Numbers .....	1
Ordering Part .....	1
Directions .....	1
OWNERS RECORD .....	1
PRE-DELIVERY CHECK LIST .....	1
DELIVERY CHECK LIST .....	1
CE REQUIRED PARTS .....	1
TA-17DE SPLIT-DRIVE AERATOR .....	
Parts Main Frame .....	2
Parts Power Train Assembly .....	3
Parts Handle and Control Assembly .....	4
TWO YEAR LIMITED WARRANTY .....	5

## INTRODUCTION

### THANK YOU

Thank you for purchasing a CLASSEN Aerator

### READ THIS MANUAL

Read this manual carefully in its entirety. It contains safety, operating, maintenance, and adjustment instructions for your Aerator. By following the operating and maintenance instructions you will prolong the life of your equipment and maintain its maximum efficiency. Failure to do so could result in personal injury or equipment damage.

This manual should be considered a permanent part of your Aerator and should remain with it if you sell it.

### WARRANTY

Refer to last page.

### MEASUREMENTS

U.S. Units of measure are used in this manual.

### SERIAL NUMBERS

Write frame and engine serial numbers, plus model numbers in "Owner's Record" section below. You may need these numbers when you order parts. The serial number stick plate is located on the right rear of the Aerator frame.

### ORDERING PARTS

When ordering parts, always give the serial number and model of your Aerator as well as the quantity, part number and description of the part needed.

### DIRECTIONS

"Right Hand" and "Left Hand" sides of the Aerator are determined by facing the "back" of the Aerator as you would operate the machine.

## OWNER'S RECORD

DATE PURCHASED \_\_\_\_\_

AERATOR MODEL NUMBER \_\_\_\_\_

AERATOR SERIAL NUMBER \_\_\_\_\_

ENGINE MODEL NUMBER \_\_\_\_\_

ENGINE SERIAL NUMBER \_\_\_\_\_

## PRE-DELIVERY CHECK LIST

Check the following before you deliver the Aerator to the customer.

1. Guards and shields fastened in place.
2. Decals fastened and legible.
3. Weight bar installed.
4. Gas lever on engine turned on.
5. All lubrication points greased.
6. 6:1 gearbox oil level.
7. Engine oil level.
8. Air cleaner.
9. Touch up scratches.
10. Chain(s) tight.
11. Lowering handle working properly.
12. Control handle(s) working to tighten V-belt(s).
13. Add fuel, start engine, test run.

DATE SET UP \_\_\_\_\_ / \_\_\_\_\_ / \_\_\_\_\_

## DELIVERY CHECK LIST

Review the operators manual with the customer.

1. Schiller Grounds Care, Inc. warranty.
2. Safe operation and service.
3. How to use controls.
4. Operating the machine correctly.
5. Transporting the Aerator.
6. Correct fuel and lubricants.
7. Daily and periodic inspections.
8. Changing oil after break-in period.
9. Servicing the Aerator regularly and correctly.
10. Schiller Grounds Care, Inc. parts and service.
11. Give the customer the operators manual and encourage customer to read it.

DATE DELIVERED \_\_\_\_\_ / \_\_\_\_\_ / \_\_\_\_\_

SIGNATURE \_\_\_\_\_

## CE REQUIRED KITS

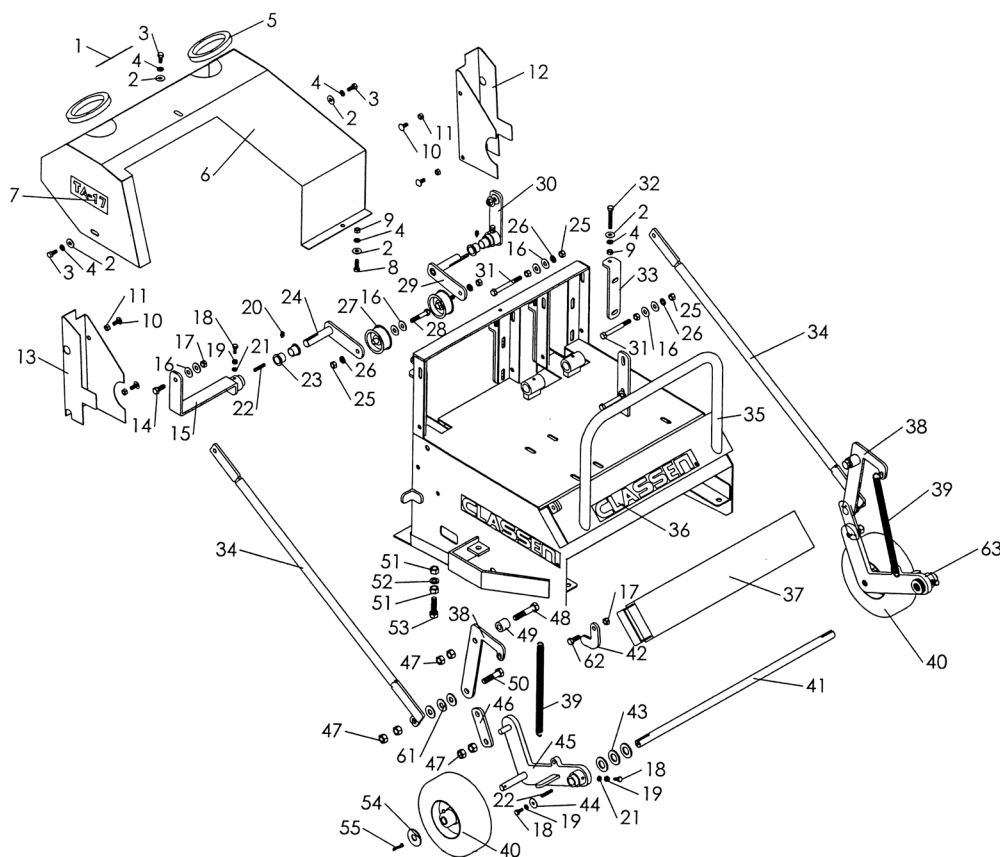
(NOT SHOWN ON PARTS ILLUSTRATIONS)

KIT P/N	DESCRIPTION	COMMENTS
C900048	TA-17D CE GUARD KIT, HARDWARE, DECALS, ETC.	This kit completely converts a NON-CE unit to a CE unit.
C300178	TA-17D CE GUARD KIT	This kit is the CE guards and hardware only.
C300177	TA-17 WHEEL GUARD	Hardware: C500133 Bolt 5/16 X 1 (2), C500029 5/16-18 Nut (2)
C100182	TA-17 PIVOTING CE GUARD	
C100183	TA-17 FIXED CE GUARD	Hardware: C500079 Bolt 3/8 x 1-3/4 (2), C500042 Washer 3/8 (4), C500041 3/8-16 Hex Nut
C300169	TA-17 CE HANDLE GUARD	Hardware: C500139- 1/4 x 1-3/4 Bolt (1), C500041- 3/8-16 Locknut (2), C500042 3/8 Flat Washer (2)

# TA-17DE SPLIT-DRIVE AERATOR (S.N. 100 & UP) PARTS LIST

## Parts Main Frame

TA-17DE  
SPLIT-DRIVE AERATOR

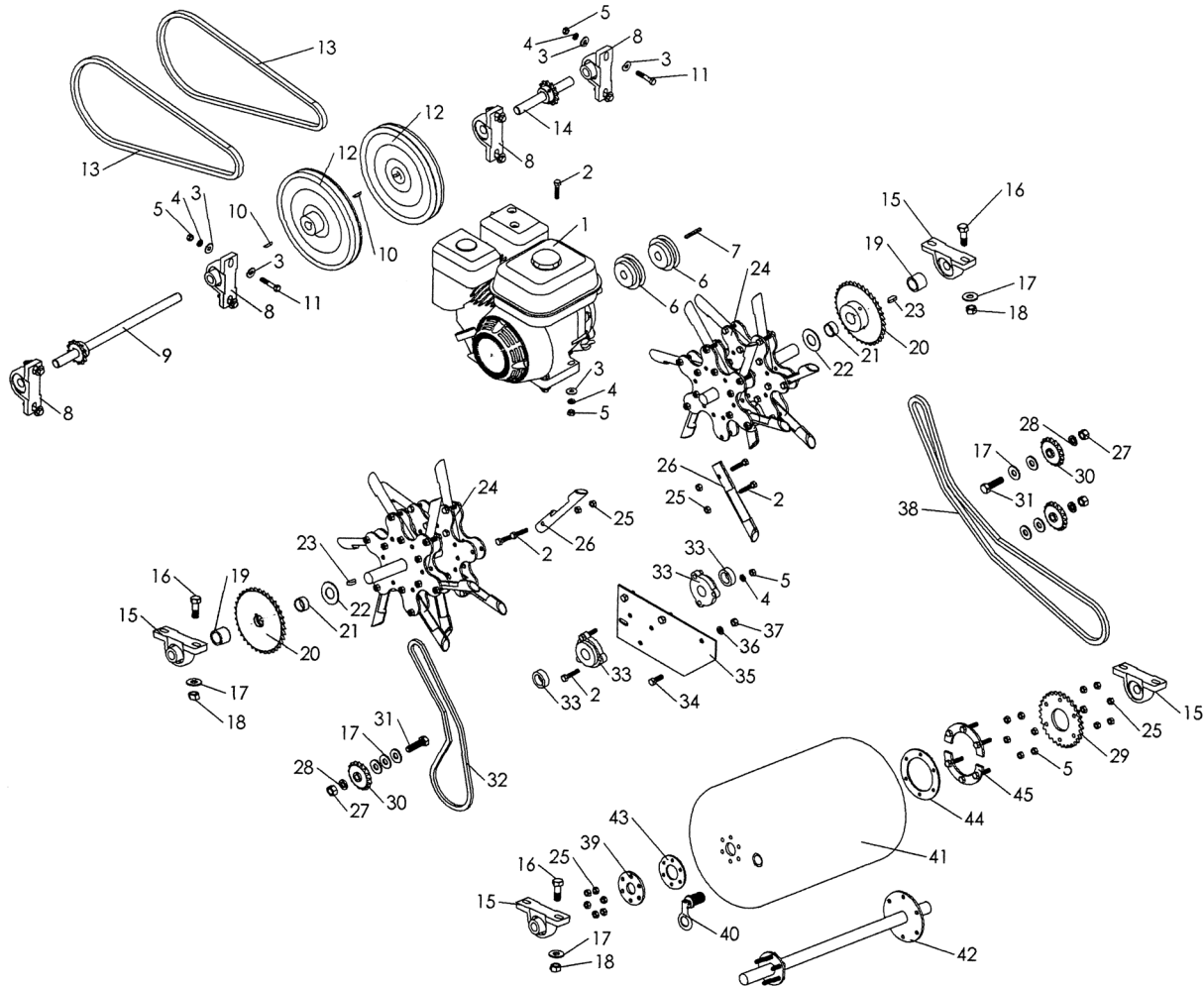


ITEM	P/N	DESCRIPTION	QTY.
1	100069	DECAL, "DANGER"	1
2	500083	5/16" FLAT WASHER	8
3	500140	5/16" x 3/4" BOLT	3
4	500115	5/16" LOCK WASHER	8
5	100419	RUBBER EDGING	2
6	400093	PULLEY GUARD	1
7	100153	DECAL, "TA-17"	2
8	500133	5/16" x 1" BOLT	1
9	500101	5/16" NUT	5
10	500163	5/16" x 3/4" CARRIAGE BOLT	4
11	500169	5/16" LOCK NUT	4
12	400393	CHAIN GUARD, (L.H.)	1
13	400394	CHAIN GUARD, (R.H.)	1
14	500134	3/8" x 1-1/4" BOLT	2
15	400086	CLUTCH ARM, (R.H.)	1
16	500042	3/8" FLAT WASHER	12
17	500041	3/8" LOCK NUT	2
18	500029	1/4" x 3/4" BOLT	4
19	500136	1/4" NUT	4
20	500001	1/4" x 28 GREASE FITTING	2
21	500137	1/4" LOCK WASHER	4
22	500011	3/16" x 1" SQ. KEY	4
23	100021	BRASS BUSHING	4
24	400021	IDLER ARM, (R.H.)	1
25	500129	3/8" NUT	7
26	500130	3/8" LOCK WASHER	4
27	100010	IDLER PULLEY	2
28	500091	3/8" x 2" BOLT	2
29	400087	IDLER ARM, (L.H.)	1
30	400020	CLUTCH ARM, (L.H.)	1
31	500170	3/8" x 4-1/2" BOLT	3
32	500114	5/16" x 2-1/4" TAP BOLT	4

ITEM	P/N	DESCRIPTION	QTY.
33	300049	CHAIN TIGHTENING PLATE	4
34	300007	LINKAGE ARM	2
35	400080	TA-17D MAIN FRAME	1
36	100074	DECAL, "CLASSEN"	3
37	400056	WEIGHT BAR	1
38	400015	SPRING ARM	2
39	100040	FRAME SPRING	2
40	100031	8" REAR TIRE ASSEMBLY	2
41	200007	KEYED SHAFT	1
42	300009	WEIGHT STOP FLAT	1
43	500194	3/4" FLAT WASHER	6
44	500164	1/4" FENDER WASHER	2
45	400013	REAR AXLE SUPPORT ARM, (L.H.)	1
46	300006	PIVOT FLAT	2
47	500131	1/2" LOCK NUT	12
48	500135	1/2" x 2-1/2" BOLT	2
49	300005	BUSHING SPACER	2
50	500149	1/2" x 2" BOLT	2
51	500106	1/2" NUT	4
52	500006	1/2" LOCK WASHER	2
53	500174	1/2" x 1-3/4" BOLT	2
54	500053	5/8" FLAT WASHER	2
55	500016	5/32" x 1-1/4" COTTER PIN	2
56	100096	DECAL, "ALL GUARDS" (N.S.)	1
57	100157	DECAL, "SPLIT-DRIVE" (N.S.)	2
58	100055	DECAL, "SERIAL NUMBER" (N.S.)	1
59	100257	DECAL, "PATENT" (N.S.)	1
60	100073	LUBRICATION TAG (N.S.)	1
61	500034	1/2" FLAT WASHER	6
62	500043	3/8" x 1" BOLT	1
63	400014	REAR AXLE SUPPORT ARM, (R.H.)	1

# Parts Power Train Assembly

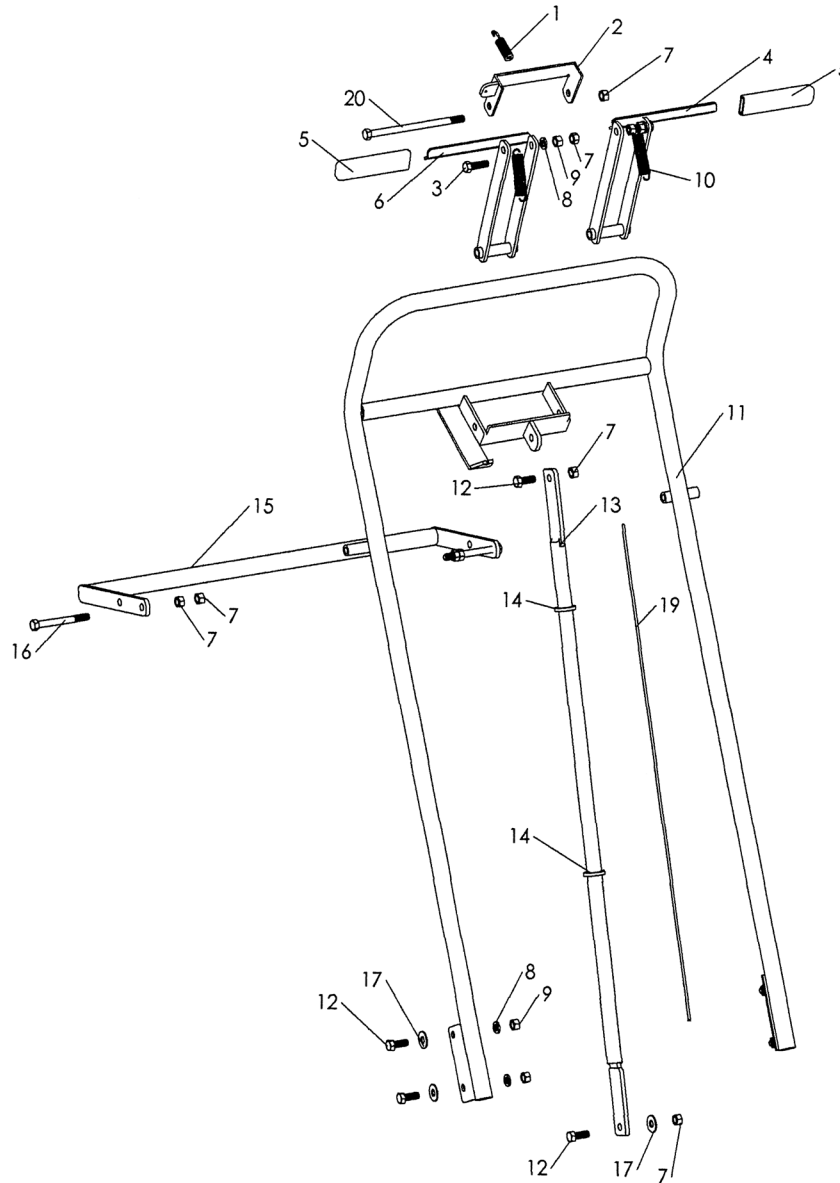
## TA-17DE SPLIT-DRIVE AERATOR



ITEM	P/N	DESCRIPTION	QTY.	ITEM	P/N	DESCRIPTION	QTY.
1	100037	4.0 HP HONDA ENGINE	1	24	700018	TINE DISC SHAFT ASSEMBLY	2
2	500147	5/16" x 1-1/2" BOLT	60	25	500169	5/16" LOCK NUT	60
3	500083	5/16" FLAT WASHER	20	26	100032	PLUGGING TINE	24
4	500115	5/16" LOCK WASHER	15	27	500106	1/2" NUT	3
5	500101	5/16" NUT	21	28	500006	1/2" LOCK WASHER	3
6	100420	3" x 3/4" PULLEY w/ HUB	2	29	200015	#40 x 30 SPROCKET	1
7	500231	3/16" x 1-3/4" SQ. KEY	1	30	100043	IDLER SPROCKET	3
8	100013	3/4" BEARING w/ COLLAR	4	31	500174	1/2" x 1-3/4" BOLT	2
9	200024	JACK SHAFT ASSEMBLY, (R.H.)	1	32	100151	#40 x 75 PITCH CHAIN w/ LINK	1
10	500173	3/16" x 7/8" HALF MOON KEY	2	33	100155	1" 3-BOLT FLANGE BEARING w/ COLLAR	2
11	500074	5/16" x 1-3/4" BOLT	8	34	500043	3/8" x 1" BOLT	3
12	100245	9" PULLEY & HUB w/o KEY	2	35	300057	3/16" LOWER PLATE	1
13	100150	BX-45 V-BELT	2	36	500130	3/8" LOCK WASHER	3
14	200023	JACK SHAFT ASSEMBLY, (L.H.)	1	37	500129	3/8" NUT	3
15	100004	1" BEARING w/ COLLAR	4	38	100108	#40 x 139 PITCH CHAIN	1
16	500150	1/2" x 1-1/2" BOLT	8	39	100083	SMALL STEEL WASHER	1
17	500034	1/2" FLAT WASHER	15	40	100109	WATER DRUM PLUG	1
18	500131	1/2" LOCK NUT	8	41	100085	WATER DRUM	1
19	300132	1" OUTSIDE SPACER	2	42	700009	DRUM AXLE	1
20	200009	#40 x 36 SPROCKET & HUB	2	43	100087	SMALL RUBBER GASKET	1
21	300011	OUTSIDE DRUM SHAFT SPACER	2	44	100084	LARGE RUBBER GASKET	1
22	300131	2" MACHINERY WASHER	2	45	700011	INNER HALF-PLATE w/ STUDS	2
23	500003	1/4" x 7/8" HALF MOON KEY	2				

# Parts Handle and Control Assembly

## TA-17DE SPLIT-DRIVE AERATOR



ITEM	P/N	DESCRIPTION	QTY
1	100035	THROTTLE CABLE CONNECTING SPRING	1
2	400088	THROTTLE ARM	1
3	500134	3/8" x 1-1/4" BOLT	2
4	400082	CONTROL HANDLE, (L.H.)	1
5	100007	RUBBER GRIP	2
6	400091	CONTROL HANDLE, (R.H.)	1
7	500041	3/8" LOCK NUT	9
8	500130	3/8" LOCK WASHER	6
9	500129	3/8" NUT	6
10	100034	CLUTCH CABLE SPRING	2
11	400018	MAIN HANDLE	1
12	500043	3/8" x 1" BOLT	6
13	300054	HANDLE BRACE	1
14	100020	PLASTIC TIE	2
15	400017	LOWERING HANDLE	1
16	500170	3/8" x 3-1/2" BOLT	2
17	500042	3/8" FLAT WASHER	4
18	200020	CLUTCH CABLE (NOT SHOWN)	2
19	100149	THROTTLE CABLE w/ CONNECTING ENDS	1
20	500162	3/8" x 6-1/2" BOLT	1



**1028 Street Road • P.O. Box 38  
Southampton, PA 18966 U.S.A.**

**TWO YEAR LIMITED WARRANTY**  
Effective April 1, 2007

For the period of two years from the date of purchase, Schiller Grounds Care, Inc. will repair or replace for the original purchaser free of charge, any part or parts found upon the examination of our factory authorized service station, or by the factory in Norfolk, Nebraska, to be defective in material or workmanship. All transportation charges on parts submitted for repair or replacement under this warranty shall be borne by the purchaser. This warranty does not include engines or engine parts, tires, batteries, or gearboxes that are covered under separate warranties furnished by their manufacturer or supplier, nor does it include normal maintenance parts, including but not limited to, spark plugs, points, filters, blades, and lubricants. All service under this warranty will be furnished or performed by our factory authorized service stations. There is no other expressed warranty. Implied warranties, including those of merchantability and fitness for a particular purpose, are limited to two years from the date of purchase and to the extent permitted by law, any and all implied warranties are excluded. The above remedy of repair and replacement of defective parts is the purchaser's exclusive remedy for any defect, malfunction or breach of warranty. Liability for incidental or consequential damages under any and all warranties is excluded to the extent permitted by law.

**NORMAL RESPONSIBILITIES OF THE SELLER AND THE USER**

1. The Distributor or Dealer is responsible for the proper assembly and preparation of the product for delivery to the end user.
2. The User is responsible for reading the Manual and Instructions.
3. The User is responsible for proper operation and maintenance as described in the manual.
4. The User is responsible for the replacement of wear items such as blades, belts, tires, batteries, etc.
5. The User is responsible for damage due to improper operation and maintenance, as well as abuse.

All claims must be received by the factory 30 days after the end of the warranty period to receive warranty consideration.

# See the complete line of Turf Care Products from *CLASSEN*

## COMPACT AERATORS

CA-18H

CA-18B

## STAND ON AERATOR

SA-25

## SPLIT DRIVE AERATORS

TA-25D

TA-17D

## TURF AERATORS

TA-19D

TA-19B

TA-26D

## RECIPROCATING AERATORS

RA-21H

RA-21B

RAS-21H

RAS-21B

## TOW/3PT AERATORS

48RT

60RT

## TURF SEEDERS

TS-20H

TS-20B

TSS-20H

TSS-20B

## TRAILERS

AST

## TURF RAKES

TR-20H

TR-20B

TRS-20H

TRS-20B

TR-20RH

TR-20RB

## SOD CUTTERS

SC-18/5.5

SC-18/8.0

## HYDRO-DRIVE SOD CUTTERS

SCHV-18/5.5

SCHV-18/8.0

*Classen reserves the right to make changes or add improvements to its products at any time without incurring any obligation to make such changes to products manufactured previously. Classen, or its distributors and dealers, accept no responsibility for variations which may be evident in the actual specifications of its products and the statements and descriptions contained in this publication.*

# ***CLASSEN***<sup>®</sup>

1028 Street Road • P.O. Box 38  
Southampton, PA 18966 U.S.A.