

CLASSEN®

HYDRO-DRIVE SOD CUTTER – PARTS MANUAL ORIGINAL LANGUAGE INSTRUCTIONS



MODEL SCHV-18 SHOWN

HYDRO-DRIVE WALK-BEHIND SOD CUTTER

SCHV-12/5.5 - S.N. 000101 & UP; SCHV-12/8.0 - S.N. 000101 & UP

SCHV-16/5.5 - S.N. 000101 & UP; SCHV-16/8.0 - S.N. 000101 & UP

SCHV-18/5.5 - S.N. 000101 & UP; SCHV-18/8.0 - S.N. 000101 & UP

SCHV-20/5.5 - S.N. 000101 & UP; SCHV-20/8.0 - S.N. 000101 & UP

SCHV-24/8.0 - S.N. 000101 & UP

TABLE OF CONTENTS

Safety 3-4

Set-up5

Maintenace / Storage.....5

Sod Cutter Mainframe Parts7

Sod Cutter Power Train Parts8

Sod Cutter Handle Assembly Parts 9-10

Kits 11

Warranty 12

NOTICE !!!

Unauthorized modifications may present **extreme** safety hazards to operators and bystanders and could also result in product damage.

Schiller Grounds Care, Inc. strongly warns against, rejects and disclaims any modifications, add-on accessories or product alterations that are not designed, developed, tested and approved by Schiller Grounds Care, Inc. Engineering Department. Any Schiller Grounds Care, Inc. product that is altered, modified or changed in any manner not specifically authorized after original manufacture—including the addition of “after-market” accessories or component parts not specifically approved by Schiller Grounds Care, Inc. will result in the Schiller Grounds Care, Inc. Warranty being voided.

Any and all liability for personal injury and/or property damage caused by any unauthorized modifications, add-on accessories or products not approved by Schiller Grounds Care, Inc. will be considered the responsibility of the individual(s) or company designing and/or making such changes. Schiller Grounds Care, Inc. will vigorously pursue full indemnification and costs from any party responsible for such unauthorized post-manufacture modifications and/or accessories should personal injury and/or property damage result.

Schiller Grounds Care, Inc.

1028 Street Road
Southampton, PA 18966 U.S.A
Phone: 215-357-5110
Fax: 215-357-8045

MODEL NUMBER

SERIAL NUMBER

MODEL NUMBER: This number appears on sales literature, technical manuals and price lists.

SERIAL NUMBER: This number appears only on your machine. It contains the model number followed consecutively by the serial number. Use this number when ordering parts or seeking warranty information.



This symbol means:
ATTENTION!
BECOME ALERT!

Your safety and the safety of others is involved.

Signal word definitions:

The signal words below are used to identify levels of hazard seriousness. These words appear in this manual and on the safety labels attached to Schiller Grounds Care, Inc. machines. For your safety and the safety of others, read and follow the information given with these signal words and/or the symbol shown above.

⚠ DANGER

DANGER indicates a hazardous situation which, if not avoided, **WILL** result in death or serious injury.

⚠ WARNING

WARNING indicates a hazardous situation which, if not avoided, **COULD** result in death or serious injury.

⚠ CAUTION

CAUTION indicates a hazardous situation which, if not avoided, **COULD** result in minor or moderate injury. It may also be used to alert against unsafe practices or property damage.

⚠ CAUTION

CAUTION used without the safety alert symbol indicates a potentially hazardous situation which, if not avoided, **MAY** result in property damage.

MAINTENANCE SAFETY

In general

- Maintain machine according to manufacturer's schedule and instructions for maximum safety and best results.
- Park machine on level ground.
- Never allow untrained personnel to service machine.
- Guards should only be removed by qualified maintenance technician for maintenance/service. Replace when work is complete.
- Adjust or repair only after the engine has been stopped and the blade has stopped moving.
- Disconnect spark plug wire(s) before doing any maintenance.
- Replace parts if worn, damaged or faulty. For best results, always replace with parts recommended by the manufacturer.
- Do not dismantle the machine without releasing or restraining forces which may cause parts to move suddenly.
- Provide adequate support, e.g. jack stands for lifted machine or parts if working beneath.
- Do not put hands or feet near or under rotating parts.
- Clean up spilled oil or fuel thoroughly.
- Replace faulty mufflers.
- To reduce fire hazards, keep the engine, muffler, and fuel storage area free of grass, leaves, debris buildup or grease.

Blades

The sod cutter blade is sharp and can cut. Use extra caution when handling. Remove obstructions with care. Wrap the blade or wear gloves.

- Only replace blade. Never straighten or weld.
- Keep other persons away from blades.



Fuel

- Petrol (gasoline) and diesel fuels are flammable; petrol (gasoline) vapors are explosive. Use extra care when handling.
- Store only in containers specifically designed for fuel.



- When refueling or checking fuel level:
 - Stop the engine and allow to cool;
 - Do not smoke;
 - Refuel outdoors only;
 - Use a funnel;
 - Do not overfill;
 - If fuel is spilled, do not attempt to start the engine until the spill is cleaned up and vapors have cleared.
- Replace caps on fuel containers and tanks securely.

Sparks from static electricity can start fires or cause explosions. Flowing fuel can generate static electricity. To prevent static electricity sparks:

- Keep fuel containers electrically grounded. Do not fill containers in a vehicle or on a truck or trailer bed with a plastic liner. Fill containers on the ground away from the vehicle.
- When practical, remove petrol (gas) powered equipment from the truck or trailer and refuel it on the ground. If equipment must be refueled on the truck or trailer, refuel from a portable container rather than a dispenser nozzle.
- Keep the dispenser nozzle in contact with the rim of the fuel tank or container opening until fueling is complete. Do not use a nozzle lock-open device.

Storage Safety

- Stop the engine and allow to cool before storing.
- Drain the fuel tank outdoors only.
- Store fuel in an approved container in a cool, dry place.
- Keep the machine and fuel containers in a locked storage place to prevent tampering and to keep children from playing with them.
- Do not store the machine or fuel container near heating appliances with an open flame, such as a water heater, or an appliance with a pilot light.
- Keep gasoline (petrol) storage area free of grass, leaves and excessive grease to reduce fire hazard.
- Clean grass and debris from cutting units, drives, mufflers and engine to help prevent fires.

To prevent injury, wear appropriate eye protection and stand clear when cutting banding. Banding is under tension and may snap back when cut.

1. Remove crate top, sides and plastic covering unit.
Remove the banding attaching the Sodcutter to the pallet.
2. Roll the Sodcutter off the pallet. The unit can also be driven off the pallet, but first read the Safety, Controls, and Operation sections of this manual, then check the oil and add gas.
3. Dispose of pallet, crate, plastic and banding in a responsible manner.

Storage Instructions

WARNING

To prevent possible explosion or ignition of vaporized fuel, do not store equipment with fuel in tank or carburetor in enclosure with open flame (for example, a furnace or water heater pilot light).

Daily Storage

1. Check engine oil level and air filter element daily.
2. Check oil level in gear case. Hydro gear uses 20W50 oil.
3. Close fuel valve at bottom of fuel tank.
4. Clean cutting blade (grass, dirt, etc.).

Extended Storage

Before the equipment is put into storage for any period exceeding 30 days:

1. Drain all fuel from fuel tank and lines (use a hose or fuel line, routed from fuel tank shut-off to proper container).
2. Start engine and run until all fuel is used from the carburetor float bowl.
3. While engine is warm, check the transmission oil and refill with the proper weight of oil corresponding to the season when the equipment will next be used.
4. Remove the spark plug and squirt a small quantity of engine oil into the cylinder. Turn the engine over a few times to distribute the oil.
5. Lubricate all lubrication fittings.
6. Clean and oil cutting blade to prevent rust.

MAINTENANCE / STORAGE

To put equipment into operation after an extended storage:

1. Fill fuel tank with clean fresh fuel.
2. Check crankcase oil level, and start engine.
3. Check fuel system for fuel leaks.
4. Check hydro gear oil. (20W50 oil)

WARNING

When replacement parts are required, use genuine **Schiller Grounds Care, Inc.** parts or parts with equivalent characteristics, including type, strength and material. Failure to do so may result in product malfunction and possible injury to the operator and/or bystanders.

Carbon monoxide present in the exhaust is an odorless and deadly gas. Never start or run the engine inside where exhaust fumes can collect. Provide enough fresh air to keep fumes from getting too strong.

Replace any warning decal that becomes illegible immediately.



HYDRO DRIVE SOD CUTTER PARTS MANUAL

SCHV-12/5.5 - S.N. 000101 & UP

SCHV-12/8.0 - S.N. 000101 & UP

SCHV-16/5.5 - S.N. 000101 & UP

SCHV-16/8.0 - S.N. 000101 & UP

SCHV-18/5.5 - S.N. 000101 & UP

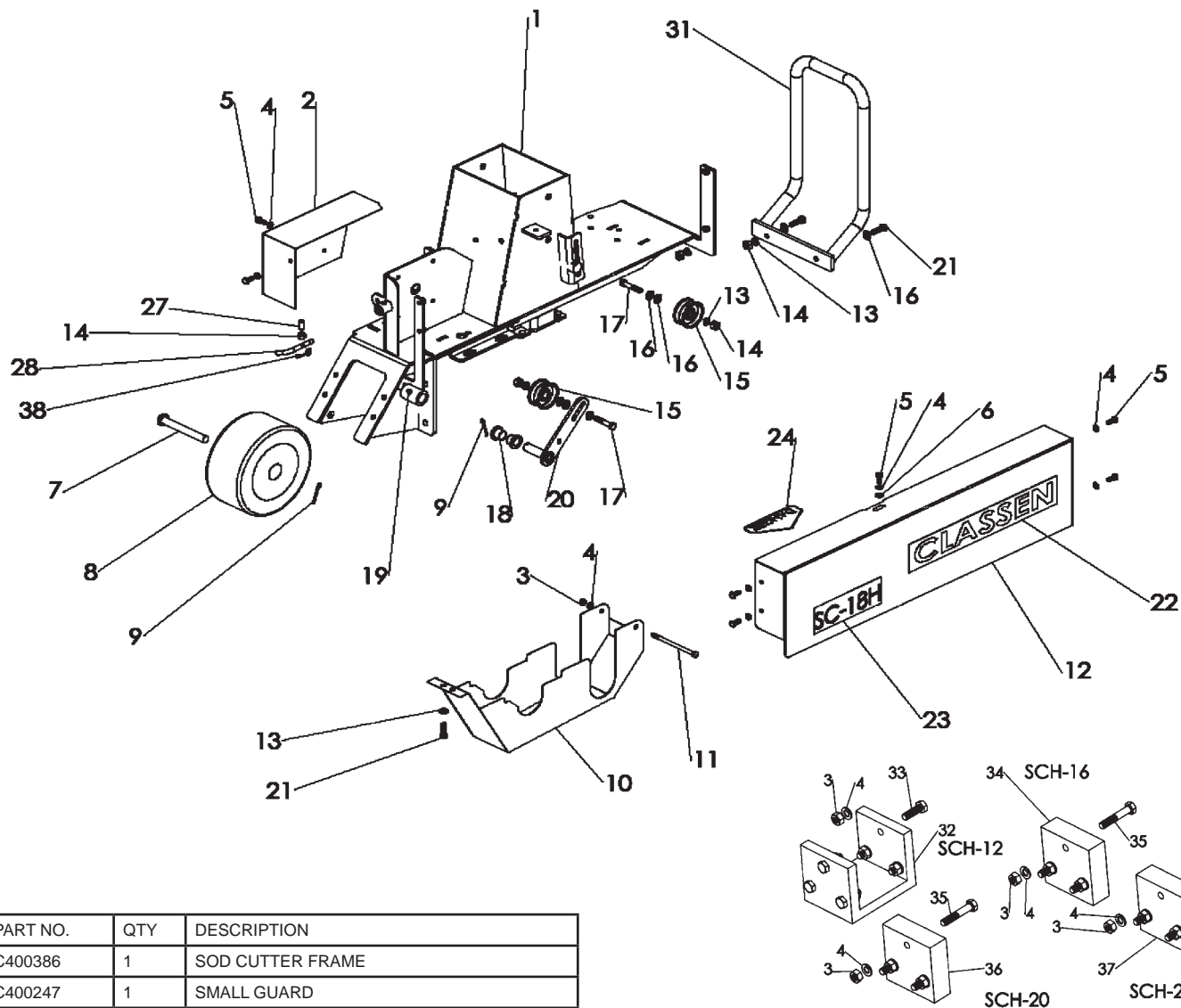
SCHV-18/8.0 - S.N. 000101 & UP

SCHV-20/5.5 - S.N. 000101 & UP

SCHV-20/8.0 - S.N. 000101 & UP

SCHV-24/8.0 - S.N. 000101 & UP

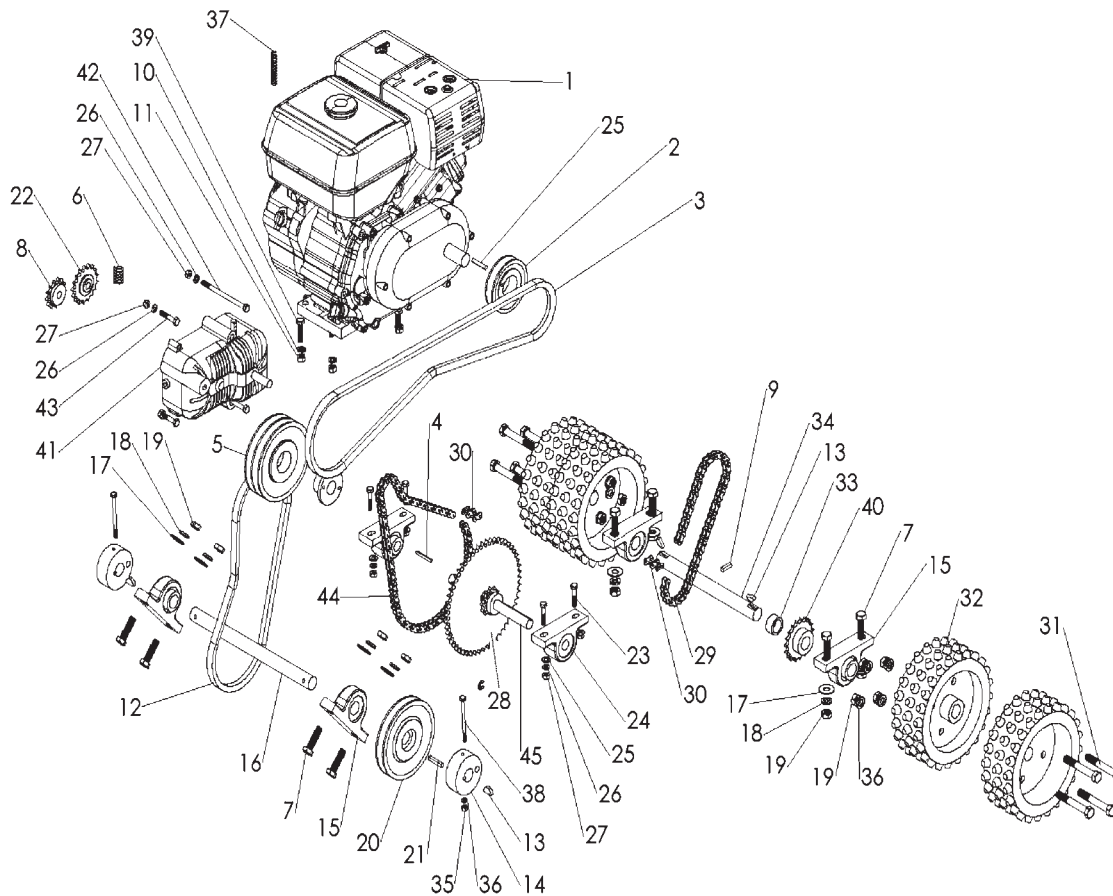
HYDRO-DRIVE SOD CUTTER MAIN FRAME



KEY	PART NO.	QTY	DESCRIPTION
1	C400386	1	SOD CUTTER FRAME
2	C400247	1	SMALL GUARD
3	C500101	1	5/16" NUT
4	C500115	8	5/16" LOCK WASHER
5	C500140	7	5/16" X 3/4" BOLT
6	C500083	1	5/16" FLAT WASHER
7	C300002	1	AXLE PIN
8	C100017	1	TIRE AND WHEEL ASSEMBLY, 9x350x4
9	C500016	2	5/32" X 1-1/2" COTTER PIN
10	C400248	1	CHAIN GUARD
11	C500219	1	5/16" X 5" BOLT
12	C400234	1	LARGE GUARD
13	C500130	6	3/8" LOCK WASHER
14	C500129	5	3/8" NUT
15	C100010	2	IDLER PULLEY
16	C500042	7	3/8" FLAT WASHER
17	C500091	2	3/8" X 2" BOLT
18	C100021	2	BRASS BUSHING
19	C500001	1	GREASE FITTING, 1/4"-28
20	C400443	1	ARM, BLADE CLUTCH HYDRO
21	C500043	2	3/8" X 1" BOLT
22	C100074	1	DECAL, "CLASSEN"
23	C100554	1	DECAL, "SCHV-12"

KEY	PART NO.	QTY	DESCRIPTION
23	C100555	1	DECAL, "SCHV-16"
23	C011556	1	DECAL, "SCHV-18"
23	C100557	1	DECAL, "SCHV-20"
23	C100558	1	DECAL, "SCHV-24"
24	C100069	1	DECAL, "DANGER"
25	C100096	1	DECAL, "ALL GUARDS" (NOT SHOWN)
26	C100489	1	DECAL "HYDRO-DRIVE " (NOT SHOWN)
27	C100501	1	3/8" VLIER PIN
28	C400251	1	NETURAL HANDLE
29	C100106	1	DECAL, SERIAL NUMBER (NOT SHOWN)
30	C100073	1	LUBRICATION TAG (NOT SHOWN)
31	C400237	1	BUMPER
32	C400011	2	12" BLADE ADAPTOR
33	C500133	12	5/16" X 1" BOLT
34	C300133	2	16" BLADE ADAPTOR
35	C500142	6	5/16" X 2" BOLT
36	C300047	2	20" BLADE ADAPTOR
37	C400188	2	24" BLADE ADAPTOR
38	C100502	1	3/8" SNAP RING

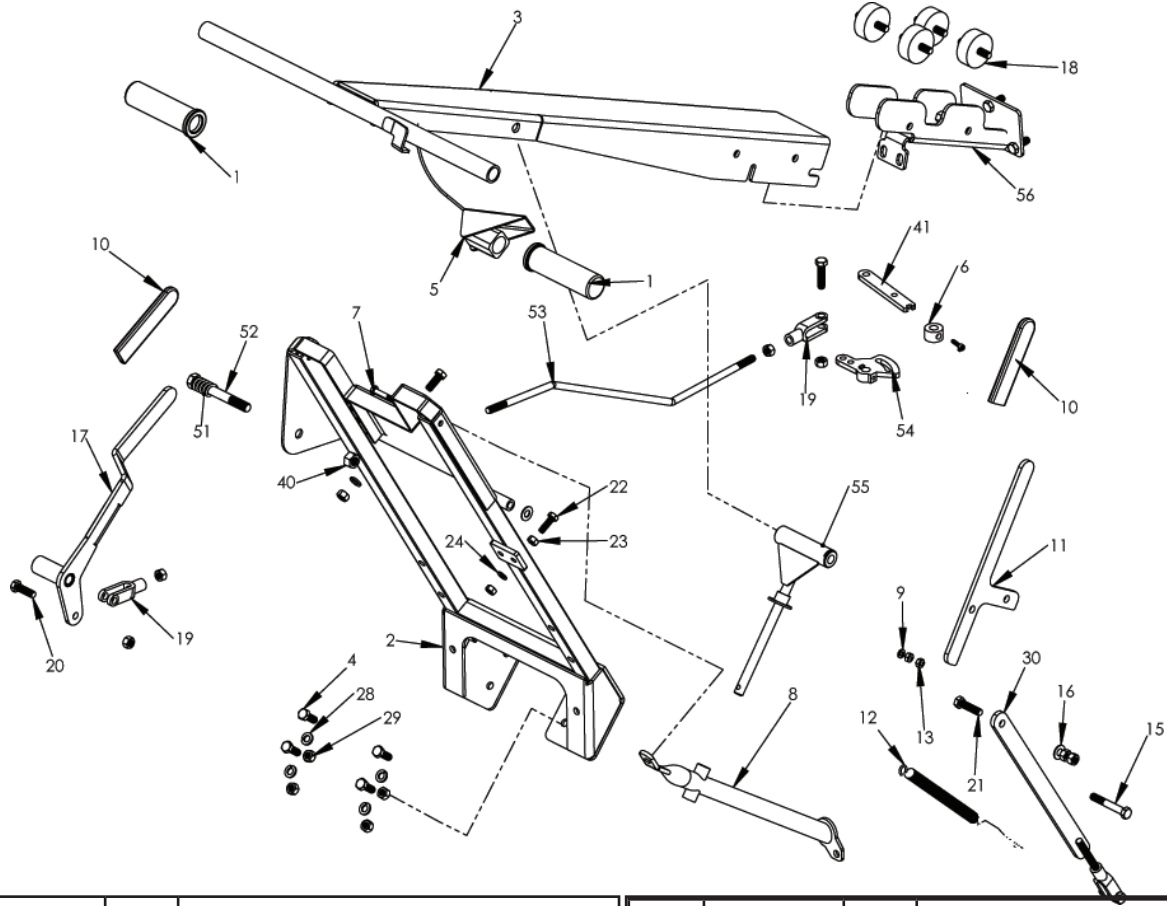
HYDRO-DRIVE POWER TRAIN ASSEMBLY



KEY	PART NO.	QTY	DESCRIPTION
1	C100005	1	HONDA 5.5 HP ENGINE W/ DEFLECTOR
1	C100114	1	HONDA 8.0 HP ENGINE W/ DEFLECTOR
2	C100028	1	PULLY W/ HUB AND BOLTS, 4" X 22MM
3	C100491	1	B55 V-BELT 5HP
3	C100503	1	B58 V-BELT 8HP
4	C500011	1	3/16" X 1-3/4" SQUARE KEY
5	C200054	1	2BK62H SHEAVE AND 15MM HUB
6	C100492	1	SPRING PLUNGER
7	C500174	8	1/2" X 1-3/4" BOLTS
8	C200044	1	13 TOOTH SPROCKET
9	C500004	1	1/4" X 1" SQUARE KEY
10	C500130	4	3/8" LOCK WASHER
11	C500129	4	3/8" NUT
12	C100513	1	B38 V-BELT
13	C500003	4	1/4" X 7/8" HALF MOON KEY
14	C700002	2	ECCENTRIC HUB
15	C100004	4	1" PILLOW BLOCK WITH COLLAR
16	C600003	1	ECCENTRIC SHAFT
17	C500034	8	1/2" FLAT WASHER
18	C500006	16	1/2" LOCK WASHER
19	C500106	16	1/2" NUT
20	C200002	1	6" PULLEY WITH 1" HUB
21	C500181	2	1/4" X 1-1/2" SQUARE KEY

22	C100043	1	IDLER SPROCKET
23	C500147	4	5/16" X 1-1/2" BOLT
24	C100013	2	3/4" PILLOW BLOCK WITH COLLAR
25	C500083	8	5/16" FLAT WASHER
26	C500115	8	5/16" LOCK WASHER
27	C500101	8	5/16" NUT
28	C100493	1	#40 X 54 WELDED SPROCKET AND HUB
29	C100495	1	#40 CHAIN X 50 ROLLER
30	C100025	2	CHAIN CONNECTING LINK
31	C500158	8	1/2" X 3-1/2" BOLT
32	C700024	4	DRIVE WHEEL (TWO WHEELS ON SC-12)
33	C300001	1	DRIVE SHAFT SPACER
34	C600004	1	DRIVE SHAFT
35	C500136	2	1/4" NUT
36	C500137	2	1/2" LOCK WASHER
37	C100027	1	THROTTLE SPRING
38	C500157	2	1/4" X 3-1/2" BOLT
39	C500146	4	3/8" X 1-1/2" BOLT
40	C200001	1	DRIVE SHAFT SPROCKET
41	C100311	1	HYDRO-GEAR (20W50 OIL)
42	C500168	2	5/16 X 4-1/2 BOLT
43	C500074	2	5/16 X 1-3/4 BOLT
44	C100494	1	#40 CHAIN X 76 ROLLER

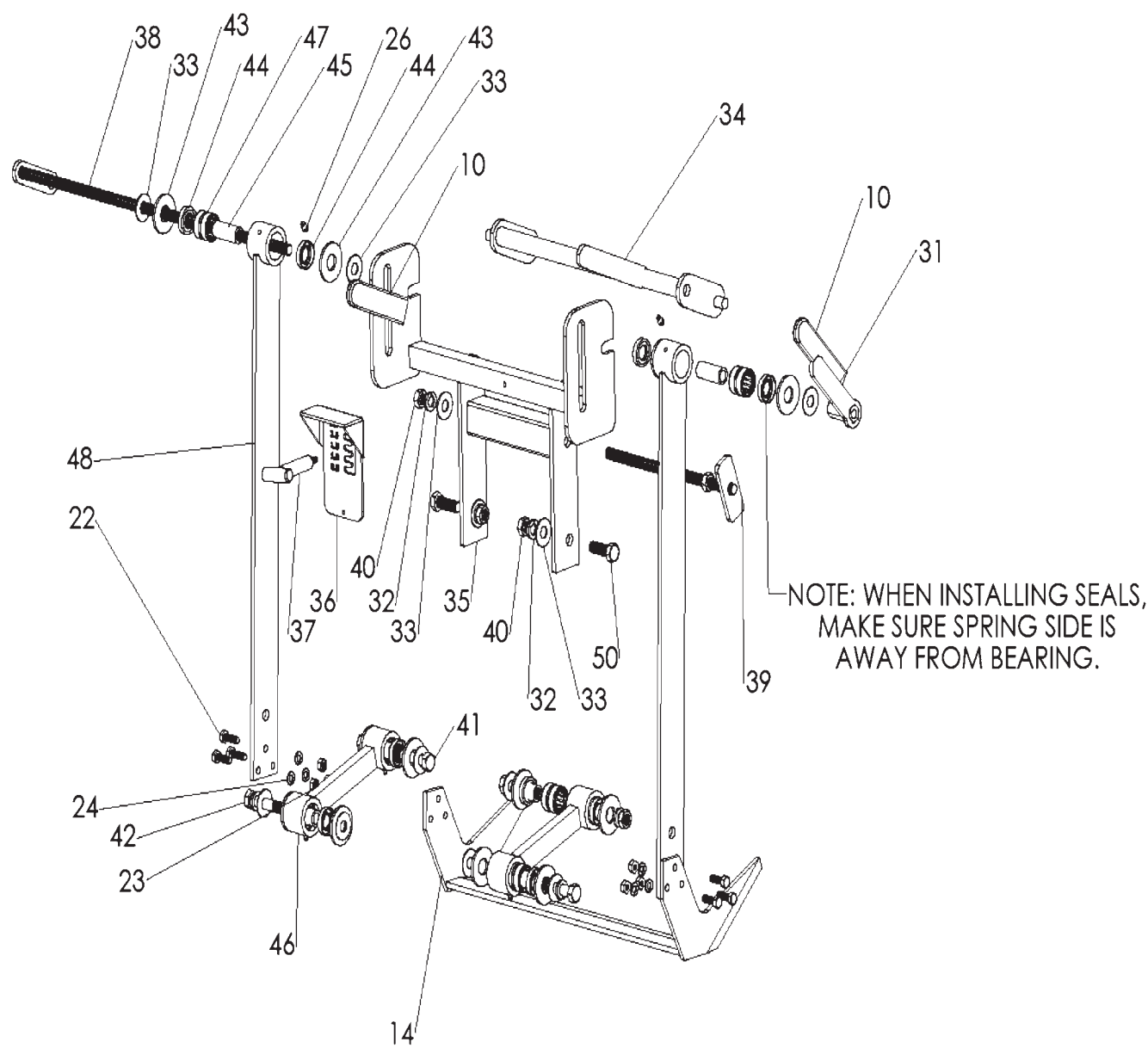
HYDRO-DRIVE HANDLE ASSEMBLY



KEY	PART NO.	QTY	DESCRIPTION
1	C100018	2	HANDLE GRIP
2	C400380	1	MAIN HANDLE
3	C400382	1	MAIN CONTROL HANDLE
4	C500043	6	3/8" X 1" BOLT
5	C100486	1	THUMB THROTTLE AND CABLE
6	C400383	1	RUBBER MOUNTING BRACKET
7	C500118	1	1/4" X 1-3/4" BOLT
8	C400384	1	HANDLE BRACE
9	C500137	1	1/4" LOCK WASHER
10	C100007	4	RUBBER GRIP
11	C400008	1	HANDLE ENGAGEMENT
12	C500019	1	SMALL HANDLE SPRING
13	C500139	1	1/4" LOCK NUT
14	C100029	1	12" CUTTING BLADE
14	C100416	1	16" CUTTING BLADE
14	C100016	1	18" CUTTING BLADE
14	C100110	1	20" CUTTING BLADE
14	C100329	1	24" CUTTING BLADE
15	C500154	1	3/8" X 2-1/2" BOLT
16	C500042	2	3/8" FLAT WASHER
17	C400381	1	WHEEL DRIVE CONTROL HANDLE
18	C400547	4	RUBBER BUSHING
19	C500026	3	3/8" CLEVIS YOKE
20	C500134	3	3/8" X 1-1/4" BOLT
21	C500146	1	3/8" X 1-1/2" BOLT
22	C500133	7	5/16" X 1" BOLT
23	C500101	8	5/16" NUT
24	C500115	7	5/16" LOCK WASHER
25	C100134	1	DECAL, "WHEEL DRIVE" (NOT SHOWN)

26	C500001	6	GREASE FITTING, 1/4"-28
27	C100490	1	DECAL, "HYDRO MANUAL ROLL" (NOT SHOWN)
28	C500130	6	3/8" LOCK WASHER
29	C500129	7	3/8" NUT
30	C400007	1	CUTTING BLADE ADJUSTMENT ARM
31	C500007	1	1/2" HANDLE NUT
32	C500006	3	1/2" LOCK WASHER
33	C500034	14	1/2" FLAT WASHER
34	C400001	1	HEIGHT ADJUSTMENT BAR
35	C400238	1	PITCH ADJUSTMENT BAR
36	C300039	1	DEPTH GAUGE
37	C400239	1	1/4" THREADED T-HANDLE
38	C200005	1	HEIGHT ADJUSTMENT BOLT
39	C200004	1	PITCH ADJUSTMENT BOLT
40	C500106	7	1/2" NUT
41	C400250	1	HANDLE, SHIFTER
42	C500151	2	1/2" X 3" FINE BOLT
43	C100001	12	3/4" NYLON WASHER
44	C100002	12	SEAL
45	C600001	6	STEEL SLEEVE
46	C800001	2	ECCENTRIC ARM
47	C100003	6	BEARING
48	C800002	2	BLADE ARM
49	C100488	1	DECAL, "HYDRO SPEED" (NOT SHOWN)
50	C500241	2	1/2" X 1" BOLT
51	C500132	1	1/2" X 4" BOLT
52	C500065	1	SPRING
53	C400253	1	3/8" LINKAGE ARM
54	C400249	1	CLUTCH ARM
55	C400385	1	RUBBER T-HANDLE MOUNT

HYDRO-DRIVE SOD CUTTER ASSEMBLY



PARTS ARE LISTED IN HANDLE ASSEMBLY

CE REQUIRED KITS

(NOT SHOWN ON PARTS ILLUSTRATIONS)

KIT P/N	DESCRIPTION	
C400322	CE MUFFLER GUARD & HARDWARE, HONDA GX120/GX160	(USED ON 5.5HP HONDA ENGINES ONLY)
C400323	CE MUFFLER GUARD & HARDWARE, HONDA GX240	(USED ON 8.0HP ENGINES ONLY)
C400328	MUFFLER GUARD-5.5HP B&S	
C400326	CE HYDRO-DRIVE GUARDS-5.5HP	
C400327	CE HYDRO-DRIVE GUARDS-8.0HP	
C400269	L.H. HANDLE GUARD W/ RUBBER & HARDWARE	
C400270	R.H. HANDLE GUARD W/ RUBBER & HARDWARE	
C400271	THROTTLE FRICTION BRACKET AND HARDWARE	
C400379	CE 6" PULLEY GUARD & HARDWARE	
C100506	CE LABEL-MEDIUM	
C100507	CE LABEL-SMALL	
C100508	CE LABEL-LARGE	

OPTIONAL KITS

(NOT SHOWN ON PARTS ILLUSTRATIONS)

KIT P/N	DESCRIPTION	
C100076	ELECTRICAL SHUT-OFF SWITCH & HARDWARE	
C400037	SET PF 2 SIDE BUMPERS & HARDWARE	

NOTES



Schiller Grounds Care, Inc.
1028 Street Road • Southampton, PA 18966
Telephone: 1-800-366-6268

TWO YEAR LIMITED WARRANTY

Effective April 1, 2007

For the period of two years from the date of purchase, Schiller Grounds Care, Inc. will repair or replace for the original purchaser free of charge, any part or parts found upon the examination of our factory authorized service station, or by the factory in Norfolk, Nebraska, to be defective in material or workmanship. All transportation charges on parts submitted for repair or replacement under this warranty shall be borne by the purchaser.

This warranty does not include engines or engine parts, tires, batteries, or gearboxes that are covered under separate warranties furnished by their manufacturer or supplier, nor does it include normal maintenance parts, including but not limited to, spark plugs, points, filters, blades, and lubricants.

All service under this warranty will be furnished or performed by our factory authorized service stations.

There is no other expressed warranty. Implied warranties, including those of merchantability and fitness for a particular purpose, are limited to two years from the date of purchase and to the extent permitted by law, any and all implied warranties are excluded. The above remedy of repair and replacement of defective parts is the purchaser's exclusive remedy for any defect, malfunction or breach of warranty. Liability for incidental or consequential damages under any and all warranties is excluded to the extent permitted by law.

NORMAL RESPONSIBILITIES OF THE SELLER AND THE USER

1. The Distributor or Dealer is responsible for the proper assembly and preparation of the product for delivery to the end user.
2. The User is responsible for reading the Manual and Instructions.
3. The User is responsible for proper operation and maintenance as described in the manual.
4. The User is responsible for the replacement of wear items such as blades, belts, tires, batteries, etc.
5. The User is responsible for damage due to improper operation and maintenance, as well as abuse.

All claims must be received by the factory 30 days after the end of the warranty period to receive warranty consideration.

See the complete line of Turf Care Products from

CLASSEN[®]

COMPACT AERATORS

CA-18H

CA-18B

STAND ON AERATOR

SA-25

SPLIT DRIVE AERATORS

TA-25D

TA-17D

TURF AERATORS

TA-19D

TA-19B

TA-26D

RECIPROCATING AERATORS

RA-21H

RA-21B

RAS-21H

RAS-21B

TOW/3PT AERATORS

48RT

60RT

TURF SEEDERS

TS-20H

TS-20B

TSS-20H

TSS-20B

TRAILERS

AST

TURF RAKES

TR-20H

TR-20B

TRS-20H

TRS-20B

TR-20RH

TR-20RB

SOD CUTTERS

SC-18/5.5

SC-18/8.0

HYDRO-DRIVE SOD CUTTERS

SCHV-18/5.5

SCHV-18/8.0

Classen reserves the right to make changes or add improvements to its products at any time without incurring any obligation to make such changes to products manufactured previously. Classen, or its distributors and dealers, accept no responsibility for variations which may be evident in the actual specifications of its products and the statements and descriptions contained in this publication.