

CLASSEN[®]

SA-25 **“STAND-AER[™]”** **STAND ON AERATOR** (S.N. 173 and Up)



SCHILLER

GROUNDS
CARE

MAN C100576

Rev. A 11-2013

Original Language Instructions

PARTS MANUAL

CALIFORNIA

Proposition 65 Warning

Diesel engine exhaust and some of its constituents are known to the State of California to cause cancer, birth defects and other reproductive harm.

 **WARNING**

The engine exhaust from this product contains chemicals known to the State of California to cause cancer, birth defects or other reproductive harm.

Californie Proposition 65 Avertissement

Les échappements des moteurs diesel et certains de leurs composés sont reconnus par l'Etat de Californie pour être cancérigènes, provoquer des défauts congénitaux et d'autres dangers en matière de reproduction.

 **AVERTISSEMENT**

L'émission du moteur de ce matériel contient des produits chimiques que l'Etat de Californie considère être cancérigènes, provoquer des défauts congénitaux et d'autres dangers en matière de reproduction.

**California Advertencia
de la Proposicion 65**

El estado de California hace saber que los gases de escape de los motores diesel y algunos de sus componentes producen cáncer, defectos de nacimiento y otros daños en el proceso de reproducción humana.

 **ADVERTENCIA**

El estado de California hace saber que los gases de escape de este producto contienen productos químicos que producen cáncer, defectos de nacimiento y otros daños en el proceso de reproducción humana.

CALIFORNIA

Proposition 65 Warning

Battery posts, terminals, wiring insulation, and related accessories contain lead and lead compounds, chemicals known to the State of California to cause cancer and birth defects or other reproductive harm.
WASH HANDS AFTER HANDLING.

IMPORTANT MESSAGE

Thank you for purchasing this Schiller Grounds Care, Inc. product. You have purchased a world class product, one of the best designed and built anywhere.

This machine comes with Operator's and Parts Manuals containing safety, operation, parts, maintenance and service information. The useful life and good service you receive from this machine depends to a large extent on how well you read and understand this manual. Treat your machine properly, lubricate and adjust it as instructed, and it will give you many years of reliable service.

Your safe use of this Schiller Grounds Care, Inc. product is one of our prime design objectives. Many safety features are built in, but we also rely on your good sense and care to achieve accident-free operation. For best protection, study the manual thoroughly. Learn the proper operation of all controls. Observe all safety precautions. Follow all instructions and warnings completely. Do not remove or defeat any safety features. Make sure those who operate this machine are as well informed and careful in its use as you are.

See a Schiller Grounds Care, Inc. dealer for any service or parts needed. Schiller Grounds Care, Inc. service ensures that you continue to receive the best results possible from Schiller Grounds Care, Inc. products. You can trust Schiller Grounds Care, Inc. replacement parts because they are manufactured with the same high precision and quality as the original parts.

Schiller Grounds Care, Inc. designs and builds its equipment to serve many years in a safe and productive manner. For longest life, use this machine only as directed in the manual, keep it in good repair and follow safety warnings and instructions. You'll always be glad you did.

Schiller Grounds Care, Inc.
One Bob Cat Lane
Johnson Creek, WI 53038-0469

TABLE OF CONTENTS

FIGURES

PAGE

SAFETY		2-6
SET-UP INSTRUCTIONS/MAINTENANCE		7
STORAGE / SPECIFICATIONS		8
PARTS SECTION		9
MAIN FRAME GROUP	FIGURE 1	10, 11
POWER TRAIN ASSEMBLY	FIGURE 2	12, 13
HANDLE/ CONTROL ASSEMBLY	FIGURE 3	14, 15
TINE FRAME ASSEMBLY	FIGURE 4	16, 17
HOSES / FITTINGS	FIGURE 5	18, 19
HOSE DIAGRAM	FIGURE 6	20
WARRANTY		21

Operator's Manual C100577

NOTICE !!!

Unauthorized modifications may present **extreme** safety hazards to operators and bystanders and could also result in product damage.

Schiller Grounds Care, Inc. strongly warns against, rejects and disclaims any modifications, add-on accessories or product alterations that are not designed, developed, tested and approved by Schiller Grounds Care, Inc.'s Engineering Department. Any Schiller Grounds Care, Inc. product that is altered, modified or changed in any manner not specifically authorized after original manufacture—including the addition of “after-market” accessories or component parts not specifically approved by Schiller Grounds Care, Inc.—will result in the Schiller Grounds Care, Inc. Warranty being voided.

Any and all liability for personal injury and/or property damage caused by any unauthorized modifications, add-on accessories or products not approved by Schiller Grounds Care, Inc. will be considered the responsibility of the individual(s) or company designing and/or making such changes. Schiller Grounds Care, Inc. will vigorously pursue full indemnification and costs from any party responsible for such unauthorized post-manufacture modifications and/or accessories should personal injury and/or property damage result.



This symbol means:
ATTENTION!
BECOME ALERT!

Your safety and the safety of others is involved.

Signal word definitions:

The signal words below are used to identify levels of hazard seriousness. These words appear in this manual and on the safety labels attached to Schiller Grounds Care, Inc. machines. For your safety and the safety of others, read and follow the information given with these signal words and/or the symbol shown above.

⚠ DANGER

DANGER indicates an imminently hazardous situation which, if not avoided, **WILL** result in death or serious injury.

⚠ WARNING

WARNING indicates a potentially hazardous situation which, if not avoided, **COULD** result in death or serious injury.

⚠ CAUTION

CAUTION indicates a potentially hazardous situation which, if not avoided, **MAY** result in minor or moderate injury. It may also be used to alert against unsafe practices or property damage.

CAUTION

CAUTION used without the safety alert symbol indicates a potentially hazardous situation which, if not avoided, **MAY** result in property damage.

Schiller Grounds Care, Inc.

One Bobcat Lane
Johnson Creek, WI 53038 U.S.A.
Phone: 920-699-2000
Fax: 920-699-3683

MODEL NUMBER

SERIAL NUMBER

MODEL NUMBER: This number appears on sales literature, technical manuals and price lists.

SERIAL NUMBER: This number appears only on your mower. It contains the model number followed consecutively by the serial number. Use this number when ordering parts or seeking warranty information.

PREPARING FOR SAFE OPERATION

Operator preparation and training

Read the Operation & Safety Manual

- If an operator or mechanic cannot read, it is the owner's responsibility to explain this material to them. If any portion of this material is unclear, contact your factory representative for clarification.
- Become familiar with the safe operation of the equipment, operator controls and safety signs. Know how to stop the engine and attachments quickly in an emergency. Do not operate or allow another person to operate this machine if there are any questions about safety.
- All operators and mechanics should be trained. The owner is responsible for training the users.
- Wear appropriate clothing, including long trousers and safety goggles or safety glasses with side shields when operating. Wear substantial footwear. Do not operate barefoot or wearing open sandals. Long hair, loose clothing or jewelry may get tangled in moving parts.
- Wear appropriate hearing protection.
- Never allow children, unskilled or improperly trained people to operate this equipment. Local regulations can restrict the age of the operator.
- Keep warning labels and this operator's manual legible and intact. Replacement labels and manuals are available from the factory.
- Do not operate machine while under the influence of drugs or alcohol or any other condition of impairment.
- The owner/user can prevent and is responsible for accidents or injuries occurring to themselves, other people or property.



Site preparation and circumstances

- Evaluate the terrain to determine what accessories and attachments are needed to properly and safely perform the job. Only use accessories and attachments approved by the manufacturer.
- Clear the area to be aerated of objects such as rocks, toys, wire or other debris that may be picked up or thrown by the machine.
- Be sure the area is clear of pets and people, especially young children. Never assume they will remain where you last saw them. Stop the machine if any enter the area.
- Operate only in daylight or in good artificial light.

Machine preparation

- Check operator presence interlock system and brake operation. Adjust or have any problems repaired before using.
- Do not tamper with or defeat safety devices. Keep guards, shields and interlock safety devices in place and in proper working condition. They are for your protection.
- Keep all fasteners such as nuts, bolts and pins well secured.
- Visually inspect tines, tine bolts and the drum assembly for wear or damage. Replace worn or damaged tines and bolts.
- Verify that machine and attachments, if any, are in good operating condition.
- Do not engage tines until ready to aerate.

OPERATING SAFELY**In general**

- Use extra care when loading or unloading the machine into a trailer or truck.
- Slow down and use caution when making turns and crossing roads and sidewalks. Stop tines if not aerating.
- Do not run the engine in an enclosed area where dangerous carbon monoxide fumes can collect.
- Stop operation if someone approaches.
- Keep all guards in place when operating.
- Do not turn sharply. Use extreme caution when pulling machine towards you.
- Use counter-weight(s) or wheel weights when suggested in the operator's manual.
- Never leave a running machine unattended. Always release drive and stop engine before leaving the operator's position.

Starting

- Start only according to instructions in this manual or on the machine.
- Before attempting to start the engine, make sure:
 - the traction clutch is disengaged.
- When starting the engine, make sure hands and feet are clear of the blades.
- Do not change engine governor settings or overspeed the engine. Operating the engine at excessive speed can increase the hazard of personal injury.

Interrupting operation

- Before leaving the operator's position:
 - Park on level ground.
 - Disengage the traction clutch.
 - Shut off the engine.
- Raise the tine:
 - when not aerating;
 - for transport;
 - when crossing surfaces other than grass.
- Disengage the traction clutch, stop the engine, :
 - before refueling;
- Disengage the traction clutch, stop the engine, allow the tines to come to a complete stop, and disconnect the spark plug wire:
 - before clearing blockages;
 - before checking, cleaning or working on the machine;
 - before having maintenance or repairs performed;
 - after striking a foreign object. Inspect the machine for damage and have repairs made before restarting;
 - if the machine begins to vibrate abnormally: shut off machine immediately. Inspect and have repairs made as needed before restarting;
- except for repairs or adjustments as specifically noted, such as for carburetor adjustment, where the engine must be running. Keep hands and feet clear of moving parts in these circumstances.
- Reduce the throttle setting during engine shut-down and, if the engine is provided with a shut-off valve, turn the fuel off at the conclusion of operation.

MANEUVERING SAFELY

In general

- Slow down before turning.
- Be aware when approaching blind corners, shrubs, trees, tall grass or other objects that may obscure vision.



WARNING

Slope Operation

- Slopes are a major factor in loss-of-control and tipover accidents that sometimes lead to severe injury or death. All slopes require extra caution.
- Before operating on slopes, evaluate the risks involved.
- Do not operate on slopes if uneasy or uncertain. Ultimate responsibility for safe operation on slopes rests with the operator.
- Do not operate steep slopes.
A slope is too steep if:
 - The machine must be crabbed (turned partially sideways uphill) to drive across the slope.
 - The machine turns downhill going across the slope.
 - You are uneasy about being on the slope
- With walk behind machines, operate across slopes, not up and down.
- Avoid starting or stopping on a slope. If wheels lose traction, disengage the traction clutch and proceed slowly straight down the slope.
- Keep all movement on the slopes slow and gradual. Do not make sudden changes in speed or direction.
- Do not turn on slopes unless necessary, and then turn slowly and downhill when possible.
- Do not operate near dropoffs, ditches or embankments. The machine could suddenly turn over if a wheel runs over the edge or an edge caves in.
- Follow the manufacturer's recommendations for wheel weights or counterweights to improve stability.

MAINTENANCE AND STORAGE SAFETY

In general

- Maintain machine according to manufacturer's schedule and instructions for maximum safety and best results.
- Park machine on level ground.
- Never allow untrained personnel to service machine.
- Guards should only be removed by a qualified technician for maintenance or service. Replace when work is complete.
- Adjust or repair only after the engine has been stopped and the tines have quit rotating.
- Replace parts if worn, damaged or faulty. For best results, always replace with parts recommended by the manufacturer.
- Disconnect spark plug wire(s) before making any repairs.
- Do not dismantle the machine without releasing or restraining forces which may cause parts to move suddenly.
- Provide adequate support, e.g. jackstands for lifted machine or parts if working beneath.
- Do not put hands or feet near or under rotating parts.
- Clean up spilled oil or fuel thoroughly.
- Replace faulty mufflers.
- To reduce fire hazards, keep the engine, muffler, and fuel storage area free of grass, leaves, debris buildup or grease.

Tines

- Tines are sharp and can cut. Use extra caution when handling. Wear appropriate personal protective equipment.
- Only replace tines. Never straighten or weld them.
- Keep other persons away from tines.



Fuel

- Petrol (Gasoline) and diesel fuels are flammable; petrol (gasoline) vapors are explosive. Use extra care when handling.
- Store only in containers specifically designed for fuel.
- When refueling or checking fuel level:
 - Stop the engine and allow to cool;
 - Do not smoke;
 - Refuel outdoors only;
 - Use a funnel;
 - Do not overfill;
 - If fuel is spilled, do not attempt to start the engine until the spill is cleaned up and vapors have cleared.
 - Replace caps on fuel containers and tanks securely.

Sparks from static electricity can start fires or cause explosions. Flowing fuel can generate static electricity. To prevent static electricity sparks:

- Keep fuel containers electrically grounded.
- Do not fill containers in a vehicle or on a truck or trailer bed with a plastic liner. Fill containers on the ground away from the vehicle.
- When practical, remove gas powered equipment from the truck or trailer and refuel it on the ground. If equipment must be refueled on the truck or trailer, refuel from a portable container rather than a dispenser nozzle.
- Keep the dispenser nozzle in contact with the rim of the fuel tank or container opening until fueling is complete. Do not use a nozzle lock-open device.

Storage

- Stop the engine and allow to cool before storing
- Drain the fuel tank outdoors only.
- Store fuel in an approved container in a cool, dry place
- Keep the machine and fuel containers in a locked storage place to prevent tampering and to keep children from playing with them.
- Do not store the machine or fuel container near appliances with an open flame such as a water heater or other appliance with a pilot light.
- Keep petrol (gasoline) storage area free of grass, leaves and excessive grease to reduce fire hazard.
- Clean grass and debris from cutting units, drives, mufflers and engine to help prevent fires.

SET-UP INSTRUCTIONS

The aerator is shipped completely assembled and has been adjusted at the factory. However, due to the jostling of the shipping process and the amount of time elapsed since this was done at the factory until you receive the machine the following items need to be repeated again before starting the aerator.

1. Remove spark plug wire from spark plug
2. Inspect the aerator for any damage, unusual conditions or missing parts.
3. Inspect the aerator for all of its decals, especially the warning decals.
4. Check (and fill if necessary) engine oil level according to the engine manufacturing recommendation. Refer to your engine manual.
5. Check (and fill if necessary) hydraulic fluid level. Use 20W-50.
6. Lubricate all moving parts. Re-grease after every use.
6. Fill fuel tank with regular unleaded gasoline.

BLEEDING AIR FROM HYDRAULICS

When any of the hydraulic parts are disconnected or removed or when the oil is changed, air must be bled from the system.

1. With the bypass valve (brass nut with a hole in the middle on each of the hydraulic pumps) closed, slowly move control handles in both the forward and reverse directions. As air is purged from the unit, the oil level in the reservoir will drop and bubbles may appear in the fluid.
2. Place the control handles in the neutral position and open the bypass valve using a 5/8" wrench. Slowly move the control handles in both forward and reverse direction to purge the air from the closed circuit.
3. Close the bypass valve and run the unit in both directions for several minutes until any remaining air is purged from the unit.
4. Refill the reservoir as necessary. Check for any fluid leaks. The transmission is now ready for operation. Check reservoir daily for proper fluid level. It should be filled to the top, or about 4 quarts.

MAINTENANCE

WARNING

Tines:

- Replace damaged or broken tines.
- Do not weld or straighten tines.
- Clean tines after use, inside and out.
- Apply a light coat of oil to tines to prevent rust.

Changing tines:

1. Pull out and remove the 3/8" snap lock pin (located in the upper center of the foot platform mount) and raise platform. Secure platform in the up position.
2. This gives you access to clean, oil, and change the tines.
3. When maintenance is complete, lower platform and re secure with the 3/8" snap lock pin.

Engine:

- With the engine in a level position check oil levels in the engine and gear reduction case. Add if required.

Lubrication:

Grease all fittings (12 total) daily. Each fitting should be filled full.

- 4 fittings on the swing arm
- 1 fitting on each of the front wheels.
- 1 fitting on the left and right control handles.
- 1 fitting on each tine disc hub.
- 1 fitting on each female rod end.

Keep roller chain clean and in proper running order. Lubricate with No. 30 oil or equivalent at start of the season and every 25 hours. Check roller chain for tightness:

1. Disconnect spark plug.
2. Take off pulley guard(s).
3. Loosen nuts by turning counter clockwise.
4. Retighten nut by turning clockwise against lock washer.
5. Replace pulley guard, nuts and lockwashers and retighten nuts.

Tires:

Excessively worn tire tread is dangerous on all hills. Replace drive tires with less than 3/32" of any tread groove left. Use only tires supplied by Classen. All six tires are foam filled and do not hold air. You will not need to check air pressure.

STORAGE INSTRUCTIONS

WARNING

To prevent possible explosion or ignition of vaporized fuel, do not store equipment with fuel in tank or carburetor in an enclosure with open flame (for example, a furnace or water heater pilot light).

Before the equipment is put in to storage for any period exceeding 30 days, the following steps should be taken.

1. Drain all fuel from the fuel tank and fuel lines.
2. Start the engine and run until all the fuel is used from the carburetor float bowl.
3. While the engine is still warm, drain the crankcase oil and refill with the proper weight oil corresponding to the season the equipment will next be used.
4. Remove the spark plug and squirt a small amount of engine oil into the cylinder. Turn the engine over a few times to distribute the oil.
5. Drain the water drum.

NOTE: Always drain the water drum for winter storage. Freezing water can rupture the drum.

6. Grease the clutch pivot fitting and wheel bearings.
6. Lubricate the chain.

To put the equipment into service after an extended period of storage:

1. Check for loose parts and tighten if necessary.
2. Check for cracked or broken tines and replace as necessary.
3. Fill the fuel tank with clean, fresh fuel.
4. Check the engine and gear reduction case oil levels with the engine in a level position.
5. Start the engine.
6. Check for fuel leaks.
7. Check clutch control operation to make sure the unit stops when the clutch control is released.

SA-25 SPECIFICATIONS

Dimensions:

Width.....36"
Length..... 55"
Height51.5"

Net Weight:

Dry weight.....880 lbs.

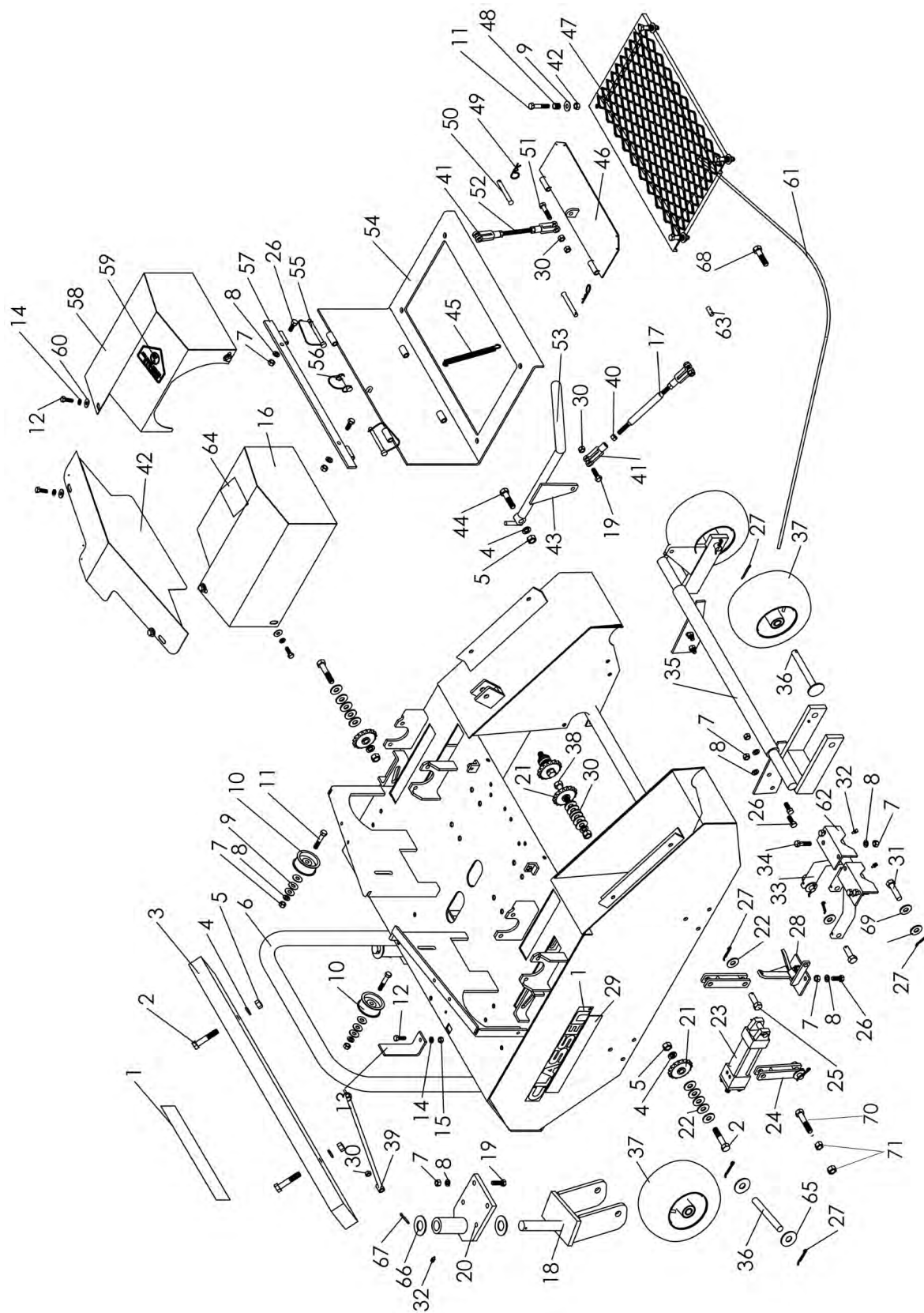
Aeration:

Tines.....3/4", 36 per unit
Penetration Depth.....3" max
Swath Width.....24.375"
Hole Pattern.....4.06" x 7" on center
Production.....Up to 50,407 sq. ft. / hour

Engine.....Honda GX390

PARTS SECTION

FIGURE 1



SA-25 STAND-AER

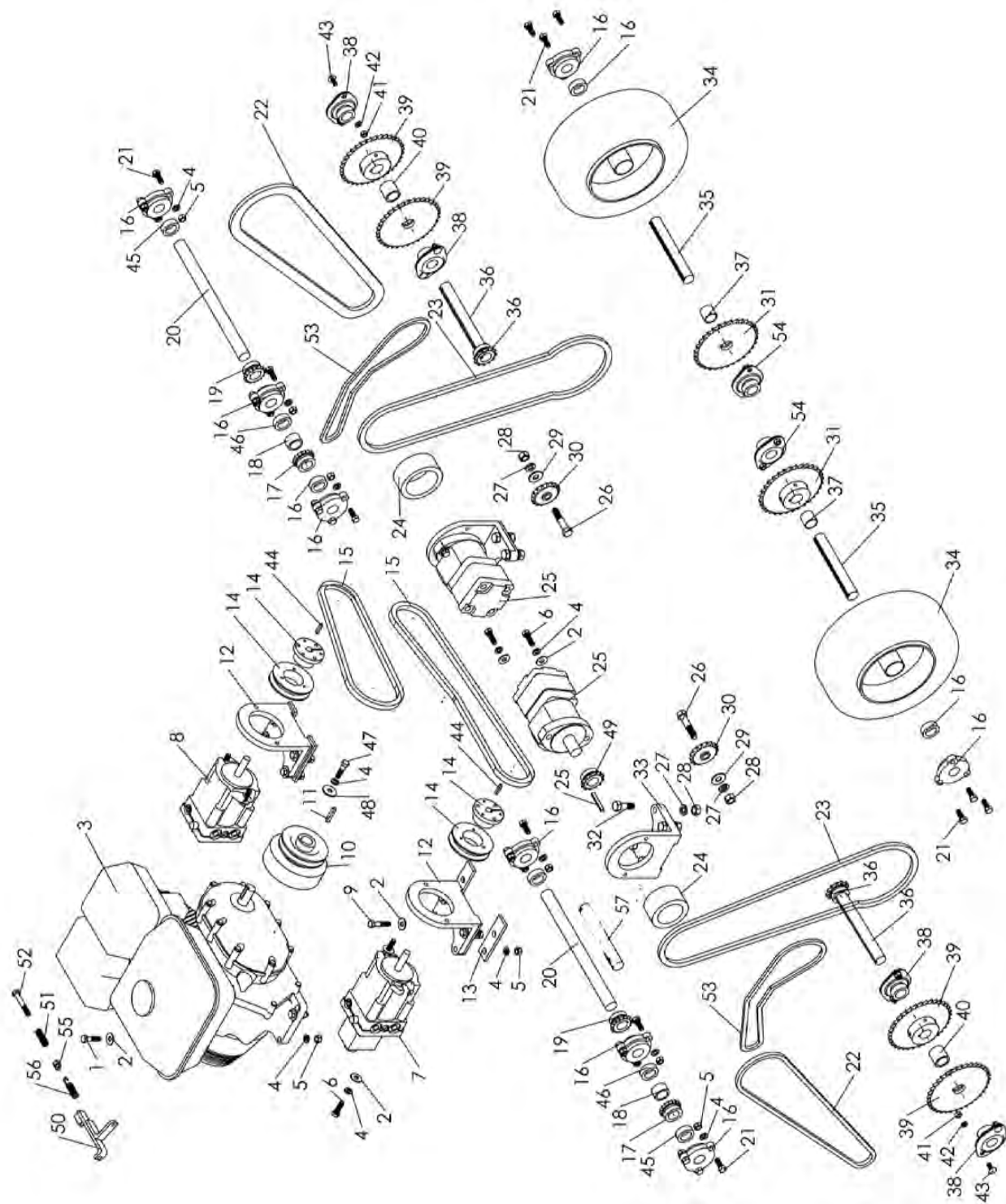
MAIN FRAME GROUP

FIGURE 1

ITEM	PART NO.	DESCRIPTION	QTY	ITEM	PART NO.	DESCRIPTION	QTY
1	4170118	DECAL, "CLASSEN"	3	42	C400201	CENTER PULLEY GUARD	1
2	C500135	1/2" x 2-1/2" BOLT	4	43	C400215	LINKAGE ARM HANDLE	1
3	C300121	WEIGHT BAR	1	44	C500149	1/2" x 2" BOLT	1
4	C500006	1/2" LOCK WASHER	7	45	C500019	SMALL HANDLE SPRING	1
5	C500106	1/2" NUT	5	46	C400210	THROTTLE PLATE	1
6	C400208	SA-25 MAIN FRAME	1	47	C400211	PLATFORM	1
7	C500129	3/8" NUT	22	48	C500065	COMPRESSION SPRING	4
8	C500130	3/8" LOCK WASHER	22	49	C500092	HAIR PIN	2
9	C500042	3/8" FLAT WASHER	10	50	C100363	3/8" x 3" CLEVIS PIN	2
10	C100010	IDLER PULLEY	2	51	C500079	3/8" x 1-3/4" BOLT	1
11	C500091	3/8" x 2" BOLT	6	52	C100360	READY ROD	1
12	C500133	5/16" x 1" BOLT	7	53	C100352	HANDLE GRIPS, 11" x 1"	1
13	C300119	DEPTH GAUGE PLATE	1	54	C400212	PLATFORM MOUNT	1
14	C500115	5/16" LOCK WASHER	6	55	C100346	3/8" SNAP PIN	2
15	C500101	5/16" NUT	1	56	C100381	3/8" SNAP LOCK PIN, SMALL	1
16	C400203	LEFT HANDLE GUARD	1	57	C400220	PLATFORM MOUNT ASSEMBLY	1
17	C400217	REAR WHEEL LINKAGE ARM	1	58	C400202	RIGHT HANDLE GUARD	1
18	C400226	FRONT WHEEL ASSEMBLY	2	59	C100069	DECAL, "DANGER"	1
19	C500134	3/8" x 1-1/4" BOLT	10	60	C500083	5/16" FLAT WASHER	6
20	C400227	FRONT WHEEL PLATE	2	61	C100442	GOVERNOR CABLE	1
21	C100043	IDLER SPROCKET	4	62	C300130	SWING ARM MOUNT	2
22	C500034	1/2" FLAT WASHER	25	63	C500232	3/8" STUD	1
23	C100365	CYLINDER	1	64	C100096	DECAL, "ALL GUARDS"	1
24	C400214	PIVOT FLAT	2	65	C500053	5/8" FLAT WASHER	4
25	64188-76	PIN-CLEVIS, 1/2 X 1-3/8	4	66	C300161	WASHER, 1" I.D. x 2" O.D. x 14	4
26	C500043	3/8" x 1" BOLT	8	67	C500182	3/16" x 1-1/2" COTTER PIN	2
27	C500016	5/32" x 1-1/4" COTTER PIN	13	68	C500029	BOLT, 1/4-20 x 3/4	1
28	C400218	SWIVEL PLATE	1	69	64163-16	WSHR 41/64X1-3/8X12 GA	2
29	C100380	DECAL, "STAND-AER"	2	70	C500080	BOLT-5/8-18 X 4	1
30	C500041	3/8" LOCK NUT	8	71	C500077	NUT-JAM 5/8-18	2
31	64188-82	PIN-CLEVIS, 5/8 X 2.25	1	72*	C100559	LABEL-LUBRICATE CHAIN	1
32	C500001	1/4" x 28 GREASE FITTING	6	73*	C100504	LABEL WARNING SPARK	1
33	C400206	SWING ARM	1	74*	C100505	DECAL-CARB APPROVAL	1
34	C500146	3/8" x 1-1/2" BOLT	4				
35	C400213	REAR TIRE FRAME	1				
36	C100361	REAR WHEEL AXLE	4				
37	C100017	WHEEL ASSY 9 x 350 x4	4				
38	C500152	1/2" x 2-3/4" BOLT	2				
39	C400216	DEPTH GAUGE ROD	1				
40	C500025	3/8" FINE THREAD NUT	4				
41	C500026	3/8" CLEVIS YOKE	4				

*NOT ILLUSTRATED

FIGURE 2



SA-25 STAND-AER

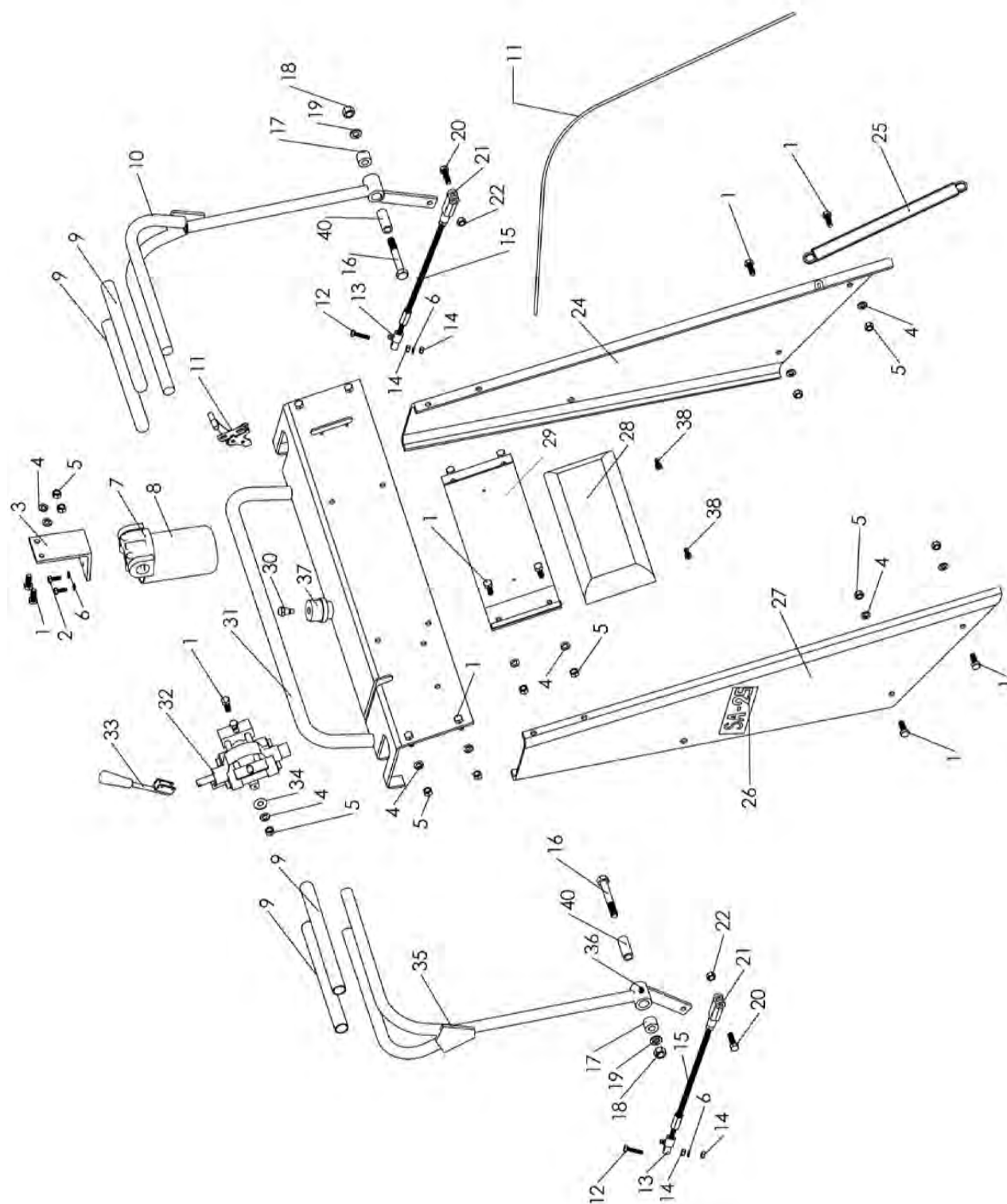
POWER TRAIN ASSEMBLY

FIGURE 2

ITEM	PART NO.	DESCRIPTION	QTY	ITEM	PART NO.	DESCRIPTION	QTY
1	C500146	3/8" x 1-1/2" BOLT	4	42	C500115	5/16" LOCK WASHER	8
2	C500042	3/8" FLAT WASHER	20	43	C500163	5/16" x 3/4" CARRIAGE BOLT	8
3	C4166075	ENGINE-HONDA GX390	1	44	C500229	5 mm KEY	2
4	C500130	3/8" LOCK WASHER	34	45	C500161	Washer, 1" I.D. x 2" O.D. x 14	2
5	C500129	3/8" NUT	38	46	C100418	SPLIT LOCK COLLAR	2
6	C500134	3/8" x 1-1/4" BOLT	8	47	C500233	3/8" x 1-1/2" FINE BOLT	1
7	C100374	LEFT SIDE HYDRAUL PUMP	1	48	C500148	3/8" HEAVY WASHER	1
8	C100373	RIGHT SIDE HYDRAUL PUMP	1	49	C100429	50 x 12 SPROCKET	2
9	C500265	3/8" x 2-1/4 BOLT	8	50	C400219	ENGINE BRACKET	1
10	C100382	CLUTCH	1	51	C100364	#12 SPRING	1
11	C500181	1/4" x 1-1/2" KEY	1	52	4169978	BOLT-3/8-16X2-5/8 7/8 THRD	1
12	C100378	PUMP MOUNT	2	53	C200052	CHAIN, 68 ROLLERS	2
13	C300118	PUMP BRACKET SPACER	4	54	C100438	BEARING w/SET SCREW	2
14	C100315	1B-34 PULLEY	2	55	C400225	3/8" LOCK NUT RING	1
15	C100371	6941 V-BELT	2	56	C100035	SPRING-THROTTLE CABLE	1
16	C100155	BEARING w/COLLAR, 3-BOLT	8	57	C300126	SPACER 5-3/4 X 1-5/16	2
17	C100386	40 B-17 SPROCKET	2	58*	C100258	LINK-CONNECTING HALF #40	2
18	C300125	5/8" x 1.3125 O.D. SPACER	2			(INCLUDED IN ITEMS 22)	
19	C100385	40 B-16 SPROCKET	2	59*	C100025	LINK-#40 CONNECTING	6
20	C200047	1" x 13-1/2" SHAFT	2			(INCLUDED IN ITEMS 22, 23, & 53)	
21	C500043	3/8" x 1" BOLT	24				
22	4170947	CHAIN, 102 ROLLER + 1/2	2	60*	C500004	KEY-1/4 X 1	12
23	C200050	CHAIN, 104 ROLLERS	2				
24	C200051	CHAIN, COUPLER W/CONN	2				
25	C100370	HYDRAULIC MOTOR, W/ KEY	2				
26	C500135	1/2" x 2-1/2" BOLT	2				
27	C500006	1/2" LOCK WASHER	10				
28	C500106	1/2" NUT	10				
29	C500034	1/2" FLAT WASHER	2				
30	C100043	IDLER SPROCKET	2				
31	C100389	32 TOOTH SPROCKET	2				
32	C500150	1/2" x 1-1/2" BOLT	8				
33	C100367	MOTOR MOUNT	2				
34	4169633	WHEEL-DRIVE, SA-25	2				
35	C200048	1" x 7" REAR WHEEL SHAFT	2				
36	C400222	1" SHAFT w/B12 x 1" SPRCKT	2				
37	C300127	SPACER COLLAR	2				
38	C100248	BEARING w/COLLAR, FLGT	4				
39	C200009	SPROCKET w/1" HUB, #40X36	4				
40	C300124	JACKSHAFT	2				
41	C500101	5/16" NUT	8				

*NOT ILLUSTRATED

FIGURE 3



SA-25 STAND-AER

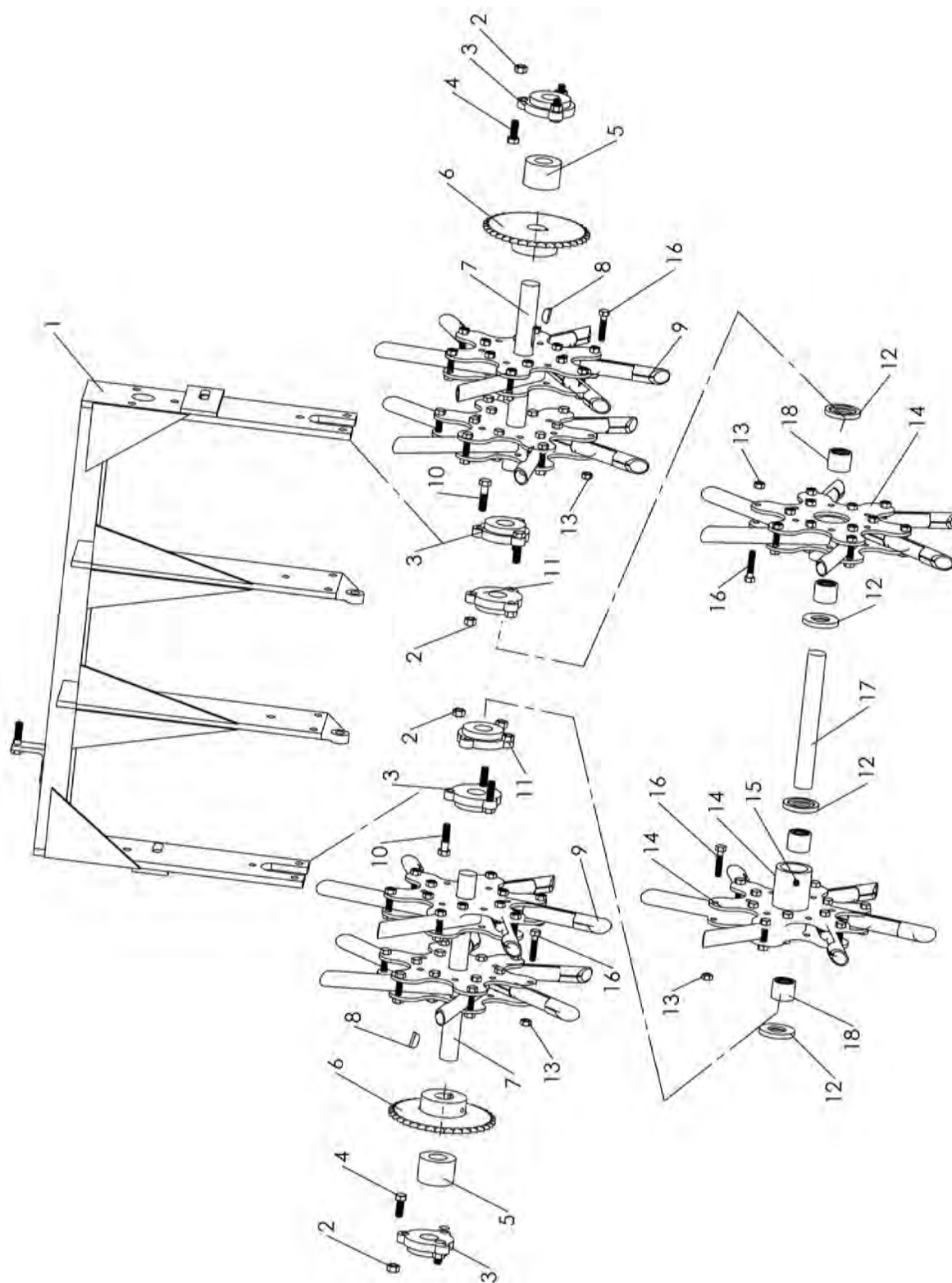
HANDLE / CONTROL ASSEMBLY

FIGURE 3

ITEM	PART NO.	DESCRIPTION	QTY	ITEM	PART NO.	DESCRIPTION	QTY
1	C500043	3/8" x 1" BOLT	16				
2	C500029	1/4" x 3/4" BOLT	2				
3	C300120	FILTER MOUNT BRACKET	2				
4	C500130	3/8" LOCK WASHER	16				
5	C500129	3/8" NUT	16				
6	C500137	1/4" LOCK WASHER	4				
7	C100480	FILTER MOUNT	2				
8	C100481	OIL FILTER	2				
9	C100352	HANDLE GRIPS, 11" x 1"	4				
10	C400200	RIGHT HANDLE CONTROL	1				
11	C100368	THROTTLE CABLE	1				
12	C500073	5/16" x 1-1/4" BOLT	2				
13	C100354	FEMALE ROD END w/ ZERK	2				
14	C500101	5/16" NUT	4				
15	C400207	READY ROD, 3/8" x 5/16"	2				
16	C500158	1/2" x 3-1/2" BOLT	2				
17	C300117	BUSHING	2				
18	C500106	1/2" NUT	2				
19	C500006	1/2" LOCK WASHER	2				
20	C500134	3/8" x 1-1/4" BOLT	2				
21	C500026	3/8" CLEVIS YOKE	2				
22	C500041	3/8" LOCK NUT	2				
23	C500025	3/8" FINE THREAD NUT	2				
24	C400198	RIGHT SIDE HANDLE	1				
25	C100012	SPRING	1				
26	C100350	SA-25 DECAL	2				
27	C400197	LEFT SIDE HANDLE	1				
28	C100351	STOMACH GUARD PAD	1				
29	C300114	STOMACH GUARD PLATE	1				
30	C100353	VENT PLUG	1				
31	C400196	TOP MAIN HANDLE	1				
32	C100375	CONTROL VALVE	1				
33	C100376	CONTROL VALVE HANDLE	1				
34	C500042	3/8" FLAT WASHER	2				
35	C400199	LEFT HANDLE CONTROL	1				
36	C500001	1/4" X 28 GREASE FITTING	2				
37	C300135	CAP, HYDRAULIC	1				
38	C500234	1/4" x 3/4" LAG BOLT	2				
39*	C100425	DECAL, "TINE DEPTH"	1				
40	C600001	SLEEVE-STEEL	2				
41*	C100421	DECAL, "RGHT, FWD,RVS"	1				
42*	C100422	DECAL, "LEFT, FWD,RVS"	1				
43*	C100423	DECAL, "TINE, UP-DOWN"	1				
44*	C100424	DECAL, "THRTTL, FAST,SLOW"	1				
45*	C100073	LUBRICATION TAG	1				

*NOT ILLUSTRATED

FIGURE 4



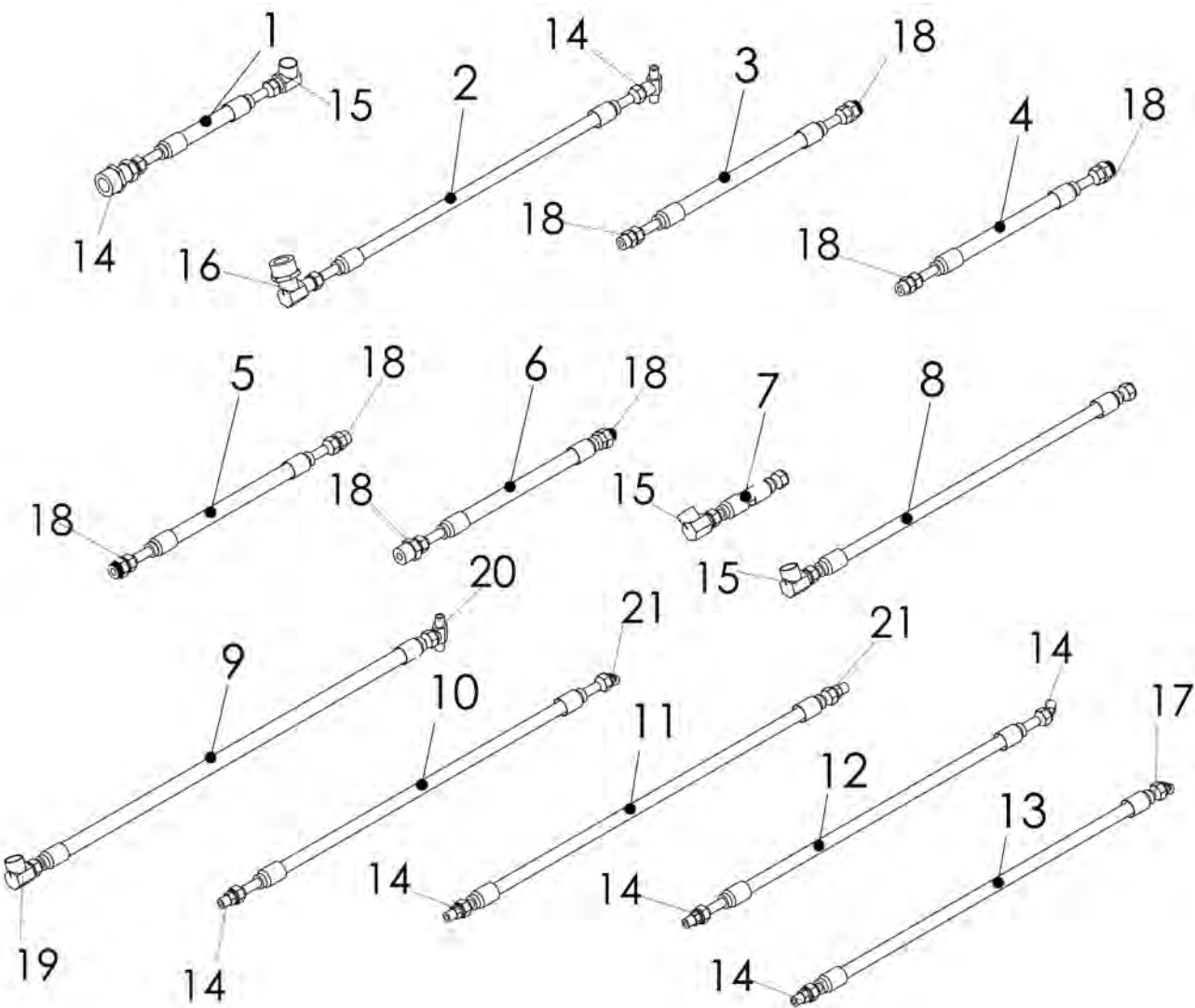
SA-25 STAND-AER

TINE FRAME ASSEMBLY

FIGURE 4

ITEM	PART NO.	DESCRIPTION	QTY	ITEM	PART NO.	DESCRIPTION	QTY
1	C400204	TINE MOUNT FRAME	1				
2	C500041	3/8" LOCK NUT	12				
3	C100155	BEARING w/COLLAR, 1"-3 BOLT	4				
4	C500043	3/8" x 1" BOLT	6				
5	C300123	TINE SPACER	2				
6	C200009	SPROCKET w/1" HUB, 40 x 30	2				
7	C700031	TINE DISC SHAFT ASSEMBLY	2				
8	C500003	1/4" HALF MOON KEY	2				
9	C100032	TINE	36				
10	C500146	3/8" x 1-1/2" BOLT	6				
11	C100383	BEARING w/SET SCREWS,	2				
12	C100384	NYLON WASHER	4				
13	C500169	5/16" LOCK NUT	72				
14	C400221	TINE DISC w/HUB WELDED ON	2				
15	C500001	1/4" X 28 GREASE FITTING	2				
16	C500147	5/16" X 1-1/2" BOLT	72				
17	C200046	TINE SHAFT	1				
18	C100430	MR16RS BEARING	4				

FIGURE 5



SA-25 STAND-AER

HOSES AND FITTINGS

FIGURE 5

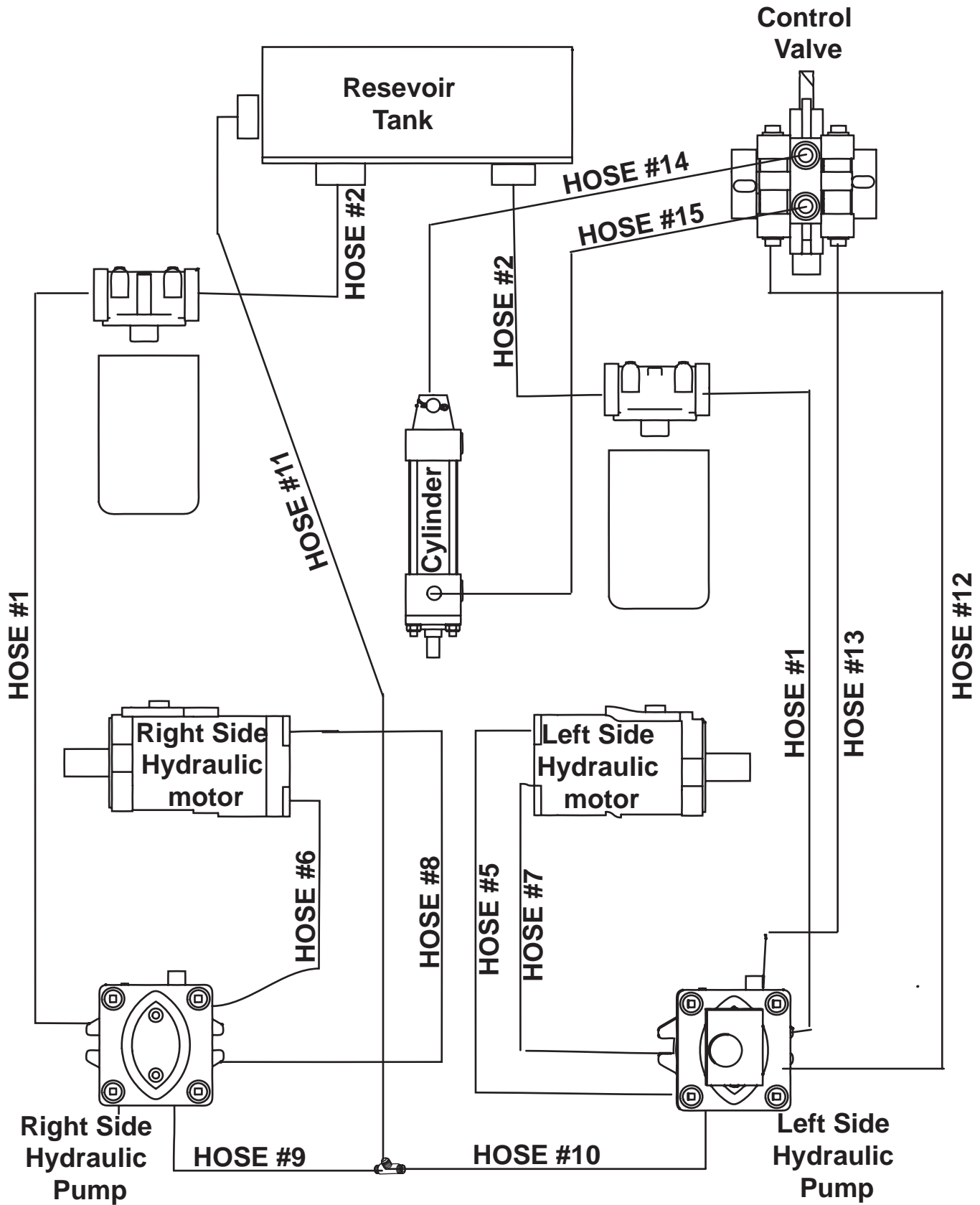
ITEM	PART NO.	DESCRIPTION	QTY	ITEM	PART NO.	DESCRIPTION	QTY
1	C600062	Hose 1-#6 JIC / JIC X 23	2				
2	C600063	Hose 2-#6 JIC / JIC X 7.5	2				
3	C600057	Hose 5-#8 JIC/ 45 JIC X 12	1				
4	C600051	Hose 6-#8 45 JIC/45 JIC X 10	1				
5	C600058	Hose 7-#8 45 JIC / 45 JIC X 12	1				
6	C600052	Hose 8-#8 JIC / 45 JIC X 11.25	1				
7	C600053	Hose 9-#6 JIC / JIC X 4.25	1				
8	C600059	Hose 10-#6 JIC / JIC X 22	1				
9	C600054	Hose 11-#8 JIC / JIC X 31	1				
10	C600055	Hose 12-#6 90MJIC/45JIC X22.75	1				
11	C600060	Hose 13-#6 90MJIC/45JIC X 24.5	1				
12	C600056	Hose 14&15-#6 JIC/JIC X 26.75	1				
13	C600056	Hose 14&15-#6 JIC/JIC X 26.75	1				
14	25-0503-6-6	FITTING STR -6 M ORB/-6 M JIC	9				
15	25-2503-6-6	FITTING 90 -6 M ORB X -6 M JIC	4				
16	25-2103-12-6	FITTING 90 -12 MPT X -6 M JIC	2				
17	25-3503-6-6	FITTING 45 -6 M ORB X -6 M JIC	1				
18	25-0503-10-8	FITTING STR -10 M ORB/-8 M JIC	8				
19	25-2103-12-8	FITTING 90 -12 MPT X -8 M JIC	1				
20	25-033T-6-8	FITTING UNION TEE -6 MJIC (2)	1				
21	25-3503-4-6	FITTING 45 -4 M ORB X -6 M JIC	2				

* NOT ILLUSTRATED

HOSE DIAGRAM

FIGURE 6

SA-25
STAND-AER





A Division of Schiller Grounds Care, Inc.
www.classen-mfg.com
1028 Street Road • Southampton, PA 18966
Toll Free: 1-877-596-6337 • Fax: 1-215-357-8045

TWO YEAR LIMITED WARRANTY

Effective April 1, 2007

For the period of two years from the date of purchase, CLASSEN MFG., INC. will repair or replace for the original purchaser free of charge, any part or parts found upon the examination of our factory authorized service station, or by the factory in Norfolk, Nebraska, to be defective in material or workmanship. All transportation charges on parts submitted for repair or replacement under this warranty shall be borne by the purchaser.

This warranty does not include engines or engine parts, tires, batteries, or gearboxes that are covered under separate warranties furnished by their manufacturer or supplier, nor does it include normal maintenance parts, including but not limited to, spark plugs, points, filters, blades, and lubricants.

All service under this warranty will be furnished or performed by our factory authorized service stations.

There is no other expressed warranty. Implied warranties, including those of merchantability and fitness for a particular purpose, are limited to two years from the date of purchase and to the extent permitted by law, any and all implied warranties are excluded. The above remedy of repair and replacement of defective parts is the purchaser's exclusive remedy for any defect, malfunction or breach of warranty. Liability for incidental or consequential damages under any and all warranties is excluded to the extent permitted by law.

NORMAL RESPONSIBILITIES OF THE SELLER AND THE USER

1. The Distributor or Dealer is responsible for the proper assembly and preparation of the product for delivery to the end user.
2. The User is responsible for reading the Manual and Instructions.
3. The User is responsible for proper operation and maintenance as described in the manual.
4. The User is responsible for the replacement of wear items such as blades, belts, tires, batteries, etc.
5. The User is responsible for damage due to improper operation and maintenance, as well as abuse.

All claims must be received by the factory 30 days after the end of the warranty period to receive warranty consideration.

See the complete line of Turf Care Products from

CLASSEN[®]

COMPACT AERATORS

CA-18H
CA-18B

STAND ON AERATOR

SA-25

SPLIT DRIVE AERATORS

TA-25D
TA-17D

TURF AERATORS

TA-19D
TA-19B
TA-26D

RECIPROCATING AERATORS

RA-21H
RA-21B
RAS-21H
RAS-21B

TOW/3PT AERATORS

48RT
60RT

TURF SEEDERS

TS-20H
TS-20B
TSS-20H
TSS-20B

TRAILERS

AST

TURF RAKES

TR-20H
TR-20B
TRS-20H
TRS-20B
TR-20RH
TR-20RB

SOD CUTTERS

SC-18/5.5
SC-18/8.0

HYDRO-DRIVE SOD CUTTERS

SCHV-18/5.5
SCHV-18/8.0

Classen reserves the right to make changes or add improvements to its products at any time without incurring any obligation to make such changes to products manufactured previously. Classen, or its distributors and dealers, accept no responsibility for variations which may be evident in the actual specifications of its products and the statements and descriptions contained in this publication.

SCHILLER GROUNDS CARE, INC.
ONE BOB-CAT LANE
P.O. BOX 469
JOHNSON CREEK, WI 53038
920-699-2000
www.schillergc.com

