



"Little Wonder"



DIVISION OF SCHILLER-PFEIFFER, INCORPORATED

1028 STREET ROAD

AREA CODE 215-357-5110

SOUTHAMPTON, PA. 18966 U.S.A.

AREA CODE 215-464-5300

INSTRUCTIONS AND REPAIR PARTS FOR THE LITTLE WONDER ELECTRIC HEDGE TRIMMER

Cat. No. D1000 - 16", 110V Hedge Trimmer
Cat. No. D1000A - 16", 220/240V Hedge Trimmer

Cat. No. D2000 - 30", 110V Hedge Trimmer
Cat. No. D2000A - 30", 220/240V Hedge Trimmer

WARNING — TO GUARD AGAINST INJURY, BASIC SAFETY PRECAUTIONS SHOULD BE OBSERVED, INCLUDING THE FOLLOWING:

CARE AND SAFETY

1. READ AND FOLLOW ALL INSTRUCTIONS.
2. DRESS PROPERLY — Do not wear loose clothing or jewelry. They can be caught in moving parts. Use of sturdy gloves, non-skid footwear and safety glasses is recommended.
3. STAY ALERT — Watch what you are doing and use common sense. Do not operate trimmer when fatigued.
4. DANGER — CUT HAZARD — KEEP HANDS AWAY FROM BLADES — Keep both hands on handles when power is on. Do not attempt to remove cut material nor hold material to be cut when blades are moving. Make sure trimmer switch is off (not depressed) when clearing jammed material from blades. Do not grasp the exposed cutting blades on cutting edges of trimmer.
CAUTION — BLADES COAST AFTER TURN OFF.
5. WARNING — GUARD AGAINST ELECTRIC SHOCK HAZARD — Don't use trimmer in rain, in wet locations, or on wet hedges or shrubbery. Use only extension cords marked "suitable for use with outdoor appliances" having electrical rating not less than rating of trimmer. Examine cord regularly; if damaged, replace immediately. Do not use damaged extension cords. Inspect cords periodically and replace if damaged. Do not abuse cord. Never carry trimmer by cord. Do not yank cord to disconnect from receptacles. Keep cord away from heat, oil and sharp edges.
6. KEEP CHILDREN AWAY — Do not permit children to contact trimmer or extension cord. Keep children a safe distance from work area.
7. USE TRIMMER PROPERLY — Use only for trimming the type of shrub, growth, etc., described in the operating instructions. Do not abuse trimmer.
8. DON'T OVERREACH OR STAND ON UNSTABLE SUPPORT — Keep good footing and balance at all times.
9. AVOID UNINTENTIONAL STARTING OF TRIMMER — Before plugging in trimmer, be sure trimmer switch is off (not depressed). Don't carry trimmer with fingers or thumb on switch or switch lockout mechanism.
10. DISCONNECT (UNPLUG) TRIMMER FROM POWER SUPPLY — When not in use or before servicing, cleaning, etc.
11. MAINTAIN TRIMMER WITH CARE — Follow maintenance instructions given in manual.
12. STORE TRIMMER INDOORS — When not in use, store trimmers indoors in a dry place where not accessible to

children as illustrated in Fig. #1, Little Wonder Storage Sheath (Cat. No. 1100) filled with a mixture of half kerosene and half oil.

13. DO NOT ATTEMPT TO REPAIR TRIMMER — Have repairs made by qualified dealer or repairman. See that only identical replacement parts are used.
14. Inspect to be sure handles, guards, and fasteners are secure and in place.

INSTRUCTIONS FOR PROPER OPERATION

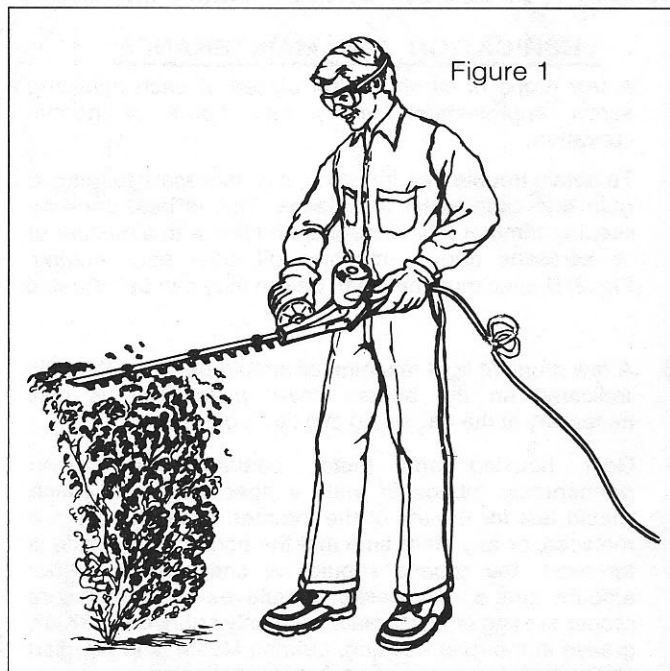


Figure 1

1. READ CARE AND SAFETY INSTRUCTIONS CAREFULLY.
2. Before plugging into an electric circuit, be sure that the voltage supply is as specified on name plate.
3. Be sure the switch is in the "OFF" (not depressed) position before connecting unit to the applicable current. (110V AC or 240V AC.)
4. Knot extension cord as shown in Figure #1 to prevent a disconnection when cord is pulled along the ground.
5. Keep extension cord behind trimmer. Never drape extension cord over hedge being trimmed. On 110V units, use 16 gauge wire extension cord at all times (Little Wonder Part No. D-16-97). Extension cord available from distributor or dealer. The use of light gauge lamp cords or sizes lighter than those specified above will result in loss of power and possible motor failure.

6. In order to depress the switch button which starts the hedge trimmer, you must first unlock the switch.

PROCEDURE:

- a. Grasp rear handle portion of hedge trimmer with left hand.
 - b. Grasp side handle of hedge trimmer with right hand.
 - c. Place thumb of left hand on button, and index finger of left hand on lockout knob located below and to the left of button on side of unit.
 - d. Gently slide lockout knob toward rear of unit unlocking switch. Simultaneously depress switch button and power is ON, and will STAY ON until switch button is released.
7. Hold trimmer firmly, unlock switch, depress button, tilt trimmer so cutting tooth is angled slightly toward the hedge or shrub and proceed to cut. The unit is designed to cut any type of hedge or shrub; however, **THICKNESS OF CUT SHOULD NOT EXCEED 1/4 INCH IN DIAMETER.**



8. BE CAREFUL OF HIDDEN METALLIC OBJECTS in the hedge or shrubbery which may damage trimmer.

ASSEMBLY INSTRUCTIONS

Remove handle and hedge trimmer from carton. On 16" models, screw handle into side of gear housing in threaded hole provided. On 30" models, screw handle into handle adapter located on frame bar in threaded hole provided. Handle should be tightened by hand, then, using pliers, tighten until at least 4 additional clicks are felt on locking notches.

WARNING — DO NOT USE WITHOUT HANDLE AND GUARD

LUBRICATION AND MAINTENANCE

1. A few drops of oil should be placed at each adjusting screw approximately every four hours of normal operation.
2. To obtain trouble free trimming, it is necessary to remove gum that collects on the blades. This is best done by keeping trimmer in storage sheath filled with a mixture of 1/2 kerosene and 1/2 machine oil, after each cutting. (Fig. 2) Blades must be clean before they can be adjusted.
3. A few drops of light machine oil should be put in the hole indicated on the bottom cover plate. This is only necessary at the beginning of a day's operation.
4. Gear housing and motor bearings have been permanently lubricated with a special grease which should last for the life of the trimmer. When blades are replaced, or any other time that the bottom cover plate is removed, the grease should be checked for proper amount and a new gasket should be used to insure proper seating of cover plate. Use only Lubrico M3-3K-9K grease in the gear housing. Lubrico M24M is to be used on the motor bearings. (See Accessory Items.)
5. Inspect to be sure handles, guards, and fasteners are secure and in place.

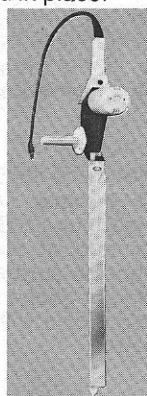


Figure 2
LITTLE WONDER
STORAGE SHEATH
Cat. #1100

ADJUSTMENT FOR HEDGE TRIMMER BLADES

CAUTION:

ALWAYS disconnect the plug from the power source before starting work.

The care and adjustment of the blades is most important to the efficient operation of the trimmer and especially to the long life of the motor.

1. Place trimmer in vise as shown in Figure #3, clamping on frame bar with blades pointing away from you. Support motor housing as shown.

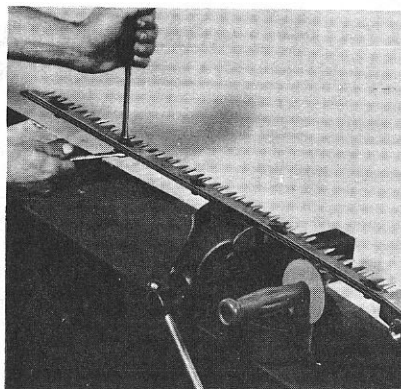


Figure 3

Adjusting
Blades
on
Trimmer

2. Using a 7/16" wrench, loosen all blade locknuts and unscrew the large head screws by two turns.
3. Starting with the screw nearest the gear housing, tighten the screw until the blade guard can just be moved with finger pressure and a 0.0015" (1 1/2 thou.) feeler blade just slips under the blade guard. Tighten the locknuts while holding the screw stationary in its correctly adjusted position.
4. Repeat step 3 on the screws in turn until all are correctly adjusted.

NOTE — Correct blade adjustment can only be achieved on clean, oiled blades.

LIMITED SERVICE & WARRANTY POLICY

All "Little Wonder" products are guaranteed against defects in material and workmanship for a period of ONE YEAR when used for RESIDENTIAL SERVICE; NINETY DAYS for COMMERCIAL SERVICE. Any "Little Wonder" products or parts found to be defective within the warranty period are to be returned to our factory in Southampton, Pennsylvania.

Transportation charges on parts and units submitted for replacement under this warranty must be borne by the purchaser.

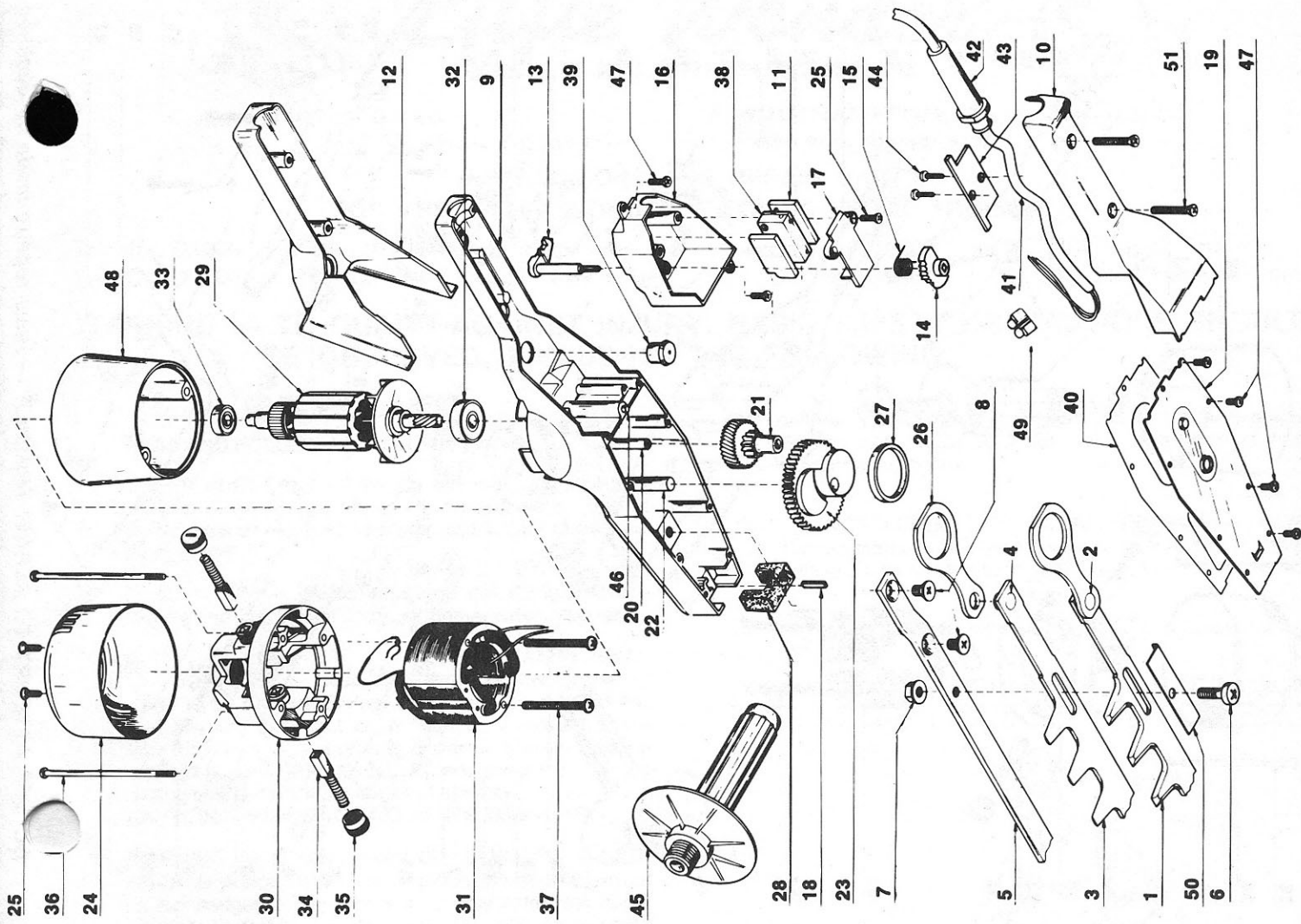
THIS WARRANTY shall not be effective if the product has been the subject of misuse, negligence or accident or if the product has been repaired or altered outside of our Southampton factory in any respect which affects its condition or operation.

"Little Wonder" shall not be liable for any special indirect or consequential damages arising from defective equipment. Any implied warranty, including merchantability or fitness for a particular purpose shall not extend beyond the written warranty period.

THIS WARRANTY shall be effective only providing attached card is properly filled out and returned to "Little Wonder, Div. of Schiller-Pfeiffer, Inc." at time of purchase.

PARTS LIST FOR 16" HEDGE TRIMMER CATALOG #D1000

KEY #	PART #	DESCRIPTION
1	16-51	Outside blade complete with drive pin & connecting rod
2	16-51B	Outside blade drive pin
3	16-52	Inside blade complete with drive pin
4	16-52B	Inside blade drive pin
5	16-53	Frame bar, drilled and lapped
6	16-54A	Large head screw 1/4" - 28 x 1 1/16 lg.
7	16-54B	Nut 1/4" - 28
8	16-54	Screw (16-54A) with nut (16-54B)
9	16-55	Flat head screw 1/4" - 28 x 1 1/2" lg.
10	D16-56	Gear housing complete with shafts and screws
11	D16-56A1	Lower handle half
12	D16-56B-L&R	Switch box spacer
13	D16-56C1	Upper handle half
14	D16-56D1	Lockout lever
15	D16-56D2	Lockout knob
16	D16-56D4	Lockout spring
17	D16-56D5	Switch box
18	D16-56E	Switch box plate
19	D16-56F	Wear plate
20	16-57A	Gear housing cover plate
21	16-58	Cluster gear shaft
22	D16-59	Cluster gear
23	16-61	Eccentric shaft
24	16-62	Eccentric gear
25	D16-63	End bell
26	D16-63A	Screw #6 x 1/2" type 25 oval head
27	16-64	Connecting rod
28	16-65	Connecting rod spacer
	16-67	Felt
	D16-69	1/10 HP Motor, incl. housing, armature, field, field tie bolt, #9 and #6 bearing, motor brushes, brush holders, brush caps (240 volt use-D16-220-69A) Armature for motor
29	D16-69A	Motor housing with brush holders
30	D16-69B	Ball bearing #9
31	D16-69C	Ball bearing #6
32	16-69D	Motor brush with spring
33	16-69E	Motor brush cap
34	16-69F	Motor tiebolt
35	16-69G	Motor tiebolt
36	16-69K	Field tiebolt
37	16-69M	Switch
38	D16-70	Switch button
39	D16-70A1	Cover plate gasket
40	D16-71	Cord with molded plug (2 wire)
41	D16-72	Cord 25' long (England Only)
42	D16-240-72W	Cord strain relief
43	D16-72B	Clamp
44	D16-72D1	Clamp screws #6 x 1/2" type 25 round head
45	D16-72E	Handle
46	16-80	Cover plate pin
47	16-81	Cover plate screw (set of 12)
48	D16-87	Motor housing adapter
49	D16-88	Connector block
50	16-93	Blade guard
51	16-103	Handle half screw



PARTS LIST FOR 30" HEDGE TRIMMER CATALOG #D2000

KEY #	PART #	DESCRIPTION
1	30-1	Outside blade complete with drive pin & connecting rod
2	16-51B	Outside blade drive pin
3	30-2	Inside blade with drive pin
4	16-52B	Inside blade drive pin
5	30-3	Frame bar, drilled and tapped
6	16-54A	Large head screw 1/4" - 28 x 11/16 lg.
7	16-54B	Nut 1/4" - 28
8	16-55	Screw (16-54A) with nut (16-54B)
9	D16-56	Flat head screw 1/4" - 28 x 1/2" lg.
10	D16-56A1	Gear housing complete with shafts and screws
11	D16-56B-L&R	Lower handle half
12	D16-56C1	Switch box spacer
13	D16-56D1	Upper handle half
14	D16-56D2	Lockout lever
15	D16-56D4	Lockout knob
16	D16-56D5	Lockout spring
17	D16-56E	Switch box
18	D16-56F	Switch box plate
19	16-57A	Wear plate
20	16-58	Gear housing cover plate
21	D16-59	Cluster gear shaft
22	16-61	Cluster gear
23	16-62	Eccentric gear shaft
24	D16-63	Eccentric gear
25	D16-63A	End bell
26	16-64	Screw #6 x 1/2" type 25 oval head
27	16-65	Connecting rod
28	16-67	Felt
29	D30-19	1/5 HP Motor, including housing armature, field, field tie bolt, brush holders, brush caps
30	D30-19A	#9 and #6 bearings, motor brushes, brush holders, brush caps
31	D16-69B	(240 volt use D30-220-19A) Armature for motor
32	D30-19C	Motor housing with brush holders
33	16-69D	(240 volt use D30-220-19C) Field for motor
34	16-69E	Ball bearing #9
35	16-69F	Ball bearing #6
36	16-69G	Motor brush with spring
37	16-69H	Motor brush cap
38	16-69I	Motor tiebolt
39	16-69J	Field tiebolt
40	16-70	Switch
41	D16-70A1	Switch button
42	D16-71	Cover plate gasket
43	D16-72	Cord with molded plug (2 wire)
44	D16-240-72W	Cord 25' long (England Only)
45	D16-72B	Cord strain relief
46	D16-72D1	Clamp
47	D16-72E	Clamp screws #6 x 1/2" type 25 round head
48	D16-73	Handle
49	16-80	Cover plate pin
50	16-81	Cover plate screw (set of 12)
51	D16-82-87	Motor housing adapter
52	D16-88	Connector block
53	16-93	Blade guard
	16-94	Handle adapter with screw

