

# OWNERS MANUAL



# CONTENTS

To the Owner .....	1
Description .....	2
Pre-Start Instructions .....	3
Controls .....	4
Operating Instructions .....	5
Driving the Steiner Tractor .....	6
Service Schedule .....	7
Service Chart .....	8
Trouble Shooting .....	9
Blade .....	10
Mower Operation .....	11
Mower Maintenance .....	12

## PARTS

Electrical .....	13
Engine .....	14
Hydraulic System .....	15, 16
Axles & Wheels .....	17
Rear Parts .....	18
Front Parts .....	19, 20
3-Point Hitch .....	21
Blade .....	22
Mower .....	23-26
Guarantee .....	27

Date of Purchase: \_\_\_\_\_ Month \_\_\_\_\_ Day \_\_\_\_\_ Year \_\_\_\_\_

Dealer Name \_\_\_\_\_ Phone Number \_\_\_\_\_

Serial Number \_\_\_\_\_

Engine Number \_\_\_\_\_ Make \_\_\_\_\_



12657 Church Road  
Orrville, Ohio 44667  
Phone: 683-0055

### **TO THE OWNER**

The purpose of this manual is to assist you in realizing all the benefits anticipated when you purchased your new Steiner Tractor.

The way you operate this product, and the care you give it, will have much to do with its successful performance.

This manual has been prepared and illustrated to give you as much information as possible.

It is important that you read the entire manual carefully before operating your new tractor, and keep it handy for future reference. Your Steiner dealer will be happy to answer any further questions, or refer them to us at Steiner Corporation: 12657 Church Road, Orrville, Ohio 44667.

## *Description*

The HYDROSTATIC, 4-wheel drive, Steiner tractor is designed with the user in mind. All components are those that have been tested and used in other equipment, and parts are readily available.

The tractor is powered by an Onan (or Briggs and Stratton), twin cylinder engine, driving an industrial hydraulic pump. This pump supplies the power to the two transaxles, providing the four-wheel drive.

Center pivot power steering enables it to operate in close quarters and further enhances the 4-wheel drive ability. Its low center of gravity and large, low pressure, high flotation tires enables it to operate on side hills steeper than anything in its category.

The rugged built, front-mounted mower enables you to mow under bushes and shrubs or out over water or ditch banks. Along with the snowblower, the mower is designed to be removed in seconds by removing one drive belt, pulling a release latch, and backing away. To hook up, just reverse the procedure.

The blade just snaps on and off the front hydraulic lift. Category "0" 3-point-hitch for the rear is optional and enables the tractor to use most of the equipment available, such as plows, scrapers, and cultivators.

Nearly all the bearings on the mower and snowblower are standard industrial grease-type ball bearings that can be purchased 'off the shelf' locally. Belts and pulleys likewise are standard industrial items that can also be locally purchased.

The Steiner tractor also has as standard equipment, adjustable seat, 12-volt automotive type battery, electric start, lights, front hydraulic lift, and power steering.

The tractor has been bought and used with great success in many places — schools, city and county parks, campgrounds, golf courses, orchards, vineyards, industrial parks, chicken farms, and by many, many homeowners.

It's more than a mower, more than a tractor — it's even a "fun to run" machine!

- 1. Always check engine oil.**
- 2. Make sure you have plenty of fuel.**
- 3. Visually check tires.**
- 4. Adjust seat.**
- 5. READ SAFETY DECALS.**
- 6. Always use good judgement in the operation of this machine.**



# PRE-START INSTRUCTIONS

## BEFORE STARTING

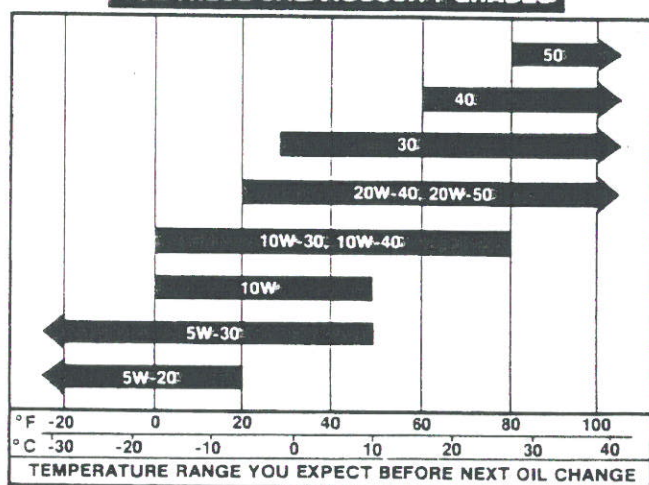
Be sure the engine is properly filled with oil and fuel.

**Crankcase Oil:** Fill the crankcase with an oil that meets the API (American Petroleum Institute) service designation SE or SE/CC. Do not mix brands nor grades of motor oil. Recommended oil numbers for expected temperatures are listed in the oil chart.

### CAUTION

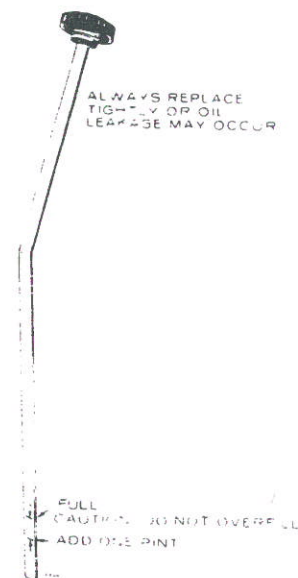
Do not overfill crankcase. Overfilling causes the oil to foam and enter the breather system. Do not use service DS oil or damage to the engine could occur.

### USE THESE SAE VISCOSITY GRADES



**Recommended Fuel:** Use clean, fresh, unleaded or regular grade gasoline. Do not use highly leaded premium fuels. Using unleaded gasoline results in less maintenance.

Use regular gasoline for the first 25 hours to allow the rings to seat well for best performance. Then use unleaded or regular gasoline thereafter.



CRANKCASE OIL FILL

If regular gasoline is used continually, carbon and lead deposits must be removed from the cylinder heads as required because of engine power loss. Unleaded gasoline may be used safely after lead deposits have been removed.

### WARNING

Do not remove the dipstick while the engine is running. Oil may blow out the oil fill tube causing injury.

### WARNING

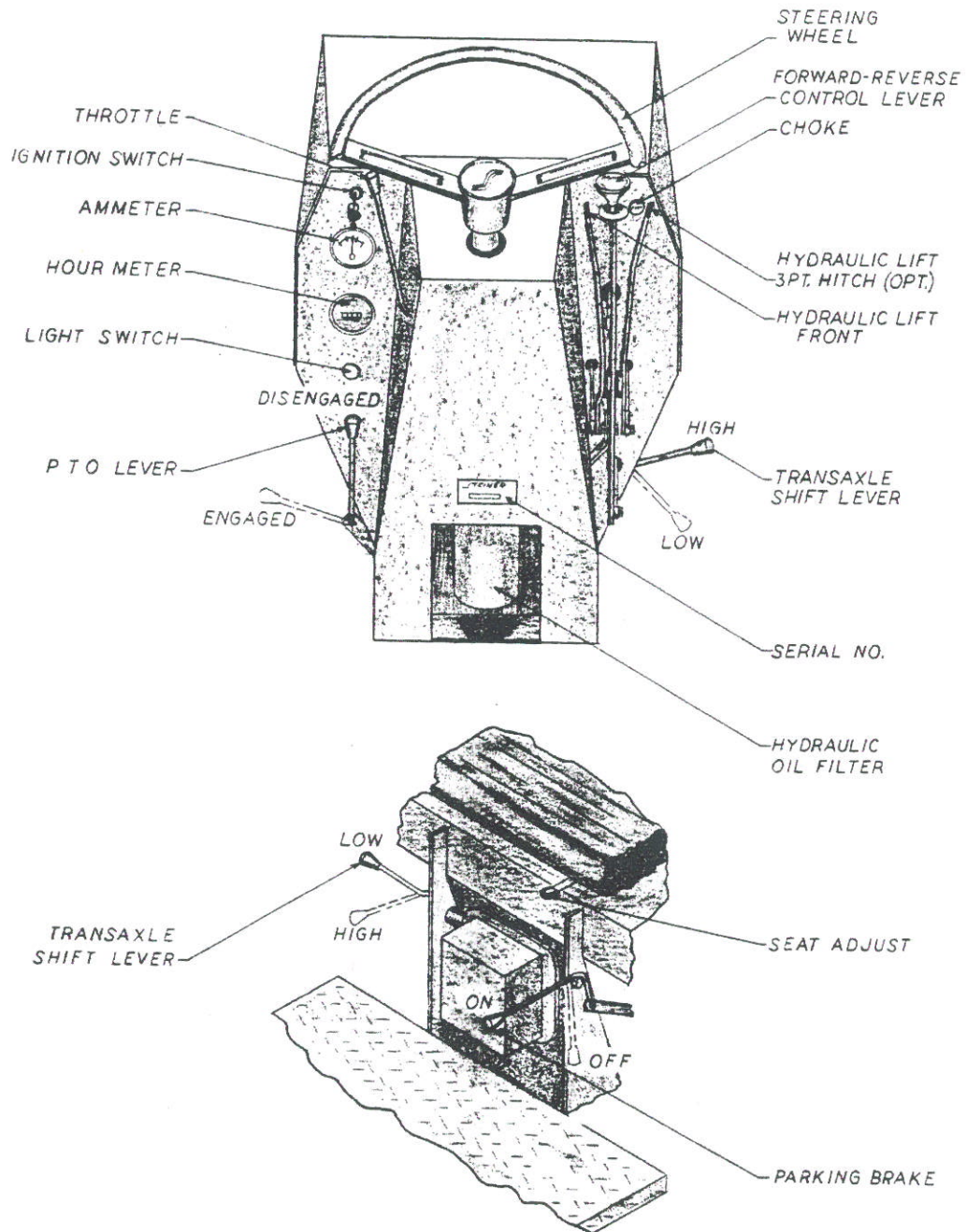
Avoid potential explosions. Never fill the fuel tank when the engine is running.

**Inspection:** Inspect the engine visually before starting. Check for loose or missing parts and any damage that may have occurred in shipment.



# Controls

Figure 2





# Operating Instructions

## IMPORTANT!

CHECK ALL BOLTS FOR SIGNS OF  
LOOSENING AFTER ONE HOUR OF  
OPERATION AND DAILY THEREAFTER

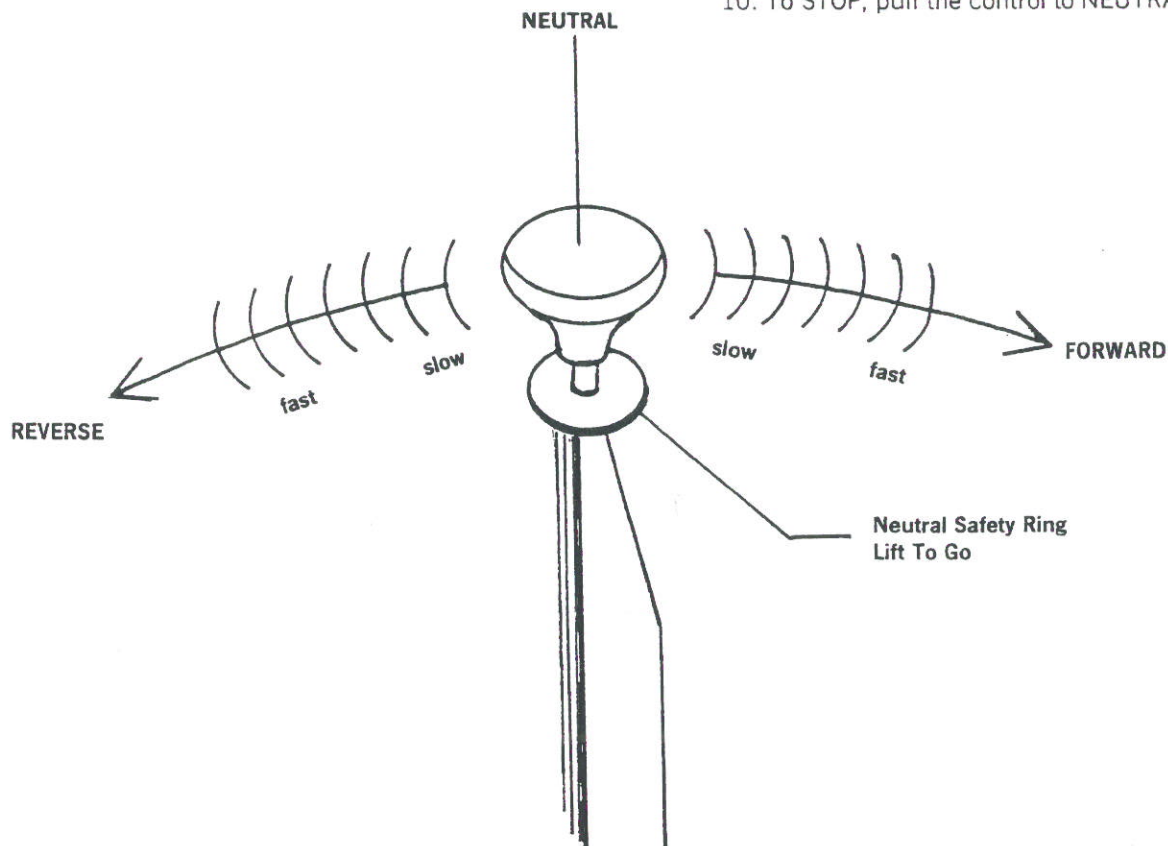
MOWER AND OTHER ATTACHMENTS:  
CHECK ALL BOLTS AND SET SCREWS  
ON PULLEYS AND SHAFTS FOR SIGNS  
OF LOOSENING  
TIGHTEN AS NEEDED!

## STARTING

1. Put forward-reverse control in Neutral.
2. Make sure P.T.O. is in the "Out" position.
3. Pull throttle back approximately one inch.
4. Pull choke all the way out.
5. Turn key to right. Tractor should start.
6. Push choke most of the way in until engine warms up.
7. In cold weather, let hydraulic oil warm up a few minutes before using tractor.
8. Make sure both transaxles are in the SAME GEAR.
9. The farther you push (or pull) the forward-reverse lever, the FASTER you go.

NOTE: Move control gradually.

10. To STOP, pull the control to NEUTRAL.



NOTE: LEVER MUST BE IN NEUTRAL AND P.T.O. IN THE "OUT" POSITION  
OR TRACTOR WILL NOT START!



# *Driving the Steiner Tractor*

Driving the Steiner Tractor with its center pivot steering is usually somewhat of a new experience, but after a few minutes this "different feel" vanishes and is replaced by a feeling of pure pleasure.

With its superb maneuverability and 4-wheel drive, the tractor becomes a "go almost anywhere" machine; therefore, we urge EXTREME CAUTION, lest these features get you into trouble.

We offer these operating tips to ensure your safety and pleasure:

- A.. Take some time and get used to the handling characterists of your new tractor.
- B. Always look before backing.
- C. Slow down over rough terrain.
- D. Do not make sharp turns at high speeds.
- E. When going down steep grades with mower on, put mower in DOWN position.

**CAUTION: IF MOWER IS NOT ATTACHED,  
BACK DOWN STEEP GRADES.**

- F. When going up steep grades, put transaxles in low gear and open throttle enough to provide adequate power to prevent stalling. Control speed with forward-reverse lever.
- G. When hauling heavy loads or using blade ALWAYS use low gear. Load limit 1000 lbs. Do not exceed weight limit.
- H. Do not expect your tractor to think for you.

**USE COMMON SENSE!!**

## **WARNING**

**ALWAYS DISENGAGE PTO  
SET BRAKE AND SHUT ENGINE OFF  
BEFORE LEAVING TRACTOR SEAT**



## Daily Service Schedule

1. Check fuel level
2. Check engine oil level
3. Visual inspection of:
  1. Use good clean regular or unleaded gasoline
  2. Use HD30 above 32° F.
  3. (a) Bolts & fittings for signs of loosening  
(b) Accumulation of dirt or foreign material around engine restricting engine cooling.  
(c) A clean tractor is easier to maintain and a pleasure to use
4. When tractor is in operation and normal operating temp. is reached, check hydraulic functions for any sign of abnormal operation. **STOP! IMPORTANT!** Do not continue to run tractor with slow or abnormal hydraulic functions. **SERIOUS DAMAGE TO HYDRAULIC PUMP WILL RESULT.**
4. At the first sign of abnormal hydraulic functions - check oil level. If oil level is OK - change hydraulic oil filter and refill as needed.

## 25 Hour Service Schedule

1. Change engine oil.  
Use HD30 Above 32° F  
Use HD10W40 below 32° F.  
Capacity: 1-1/2 quarts - Briggs & Stratton  
2 quarts with filter - Onan.
2. Check air cleaner.  
Clean as necessary.
3. Check battery water level.  
Fill as necessary.
4. Check front transaxle oil level.  
1/4 inch over plates.  
Refill as needed with Steiner approved trans-hydraulic fluid or IH-Hy-Tran.  
**DO NOT USE** motor oil or automatic transmission oil.
5. Visual inspection of:
  - A. Bolt and fittings for signs of loosening. Tighten as necessary.
  - B. Accumulation of dirt or foreign material around engine restricting engine cooling.
6. Lubrication.  
Grease fitting on center pivot ball.
7. Check tire pressure.  
Adjust to 5 lbs. — front  
5 lbs. — rear
8. Check fuel filter.  
Replace if extremely dirty.
9. Mower.  
Grease all fittings.  
Do not over-grease.

## Annual Service Schedule

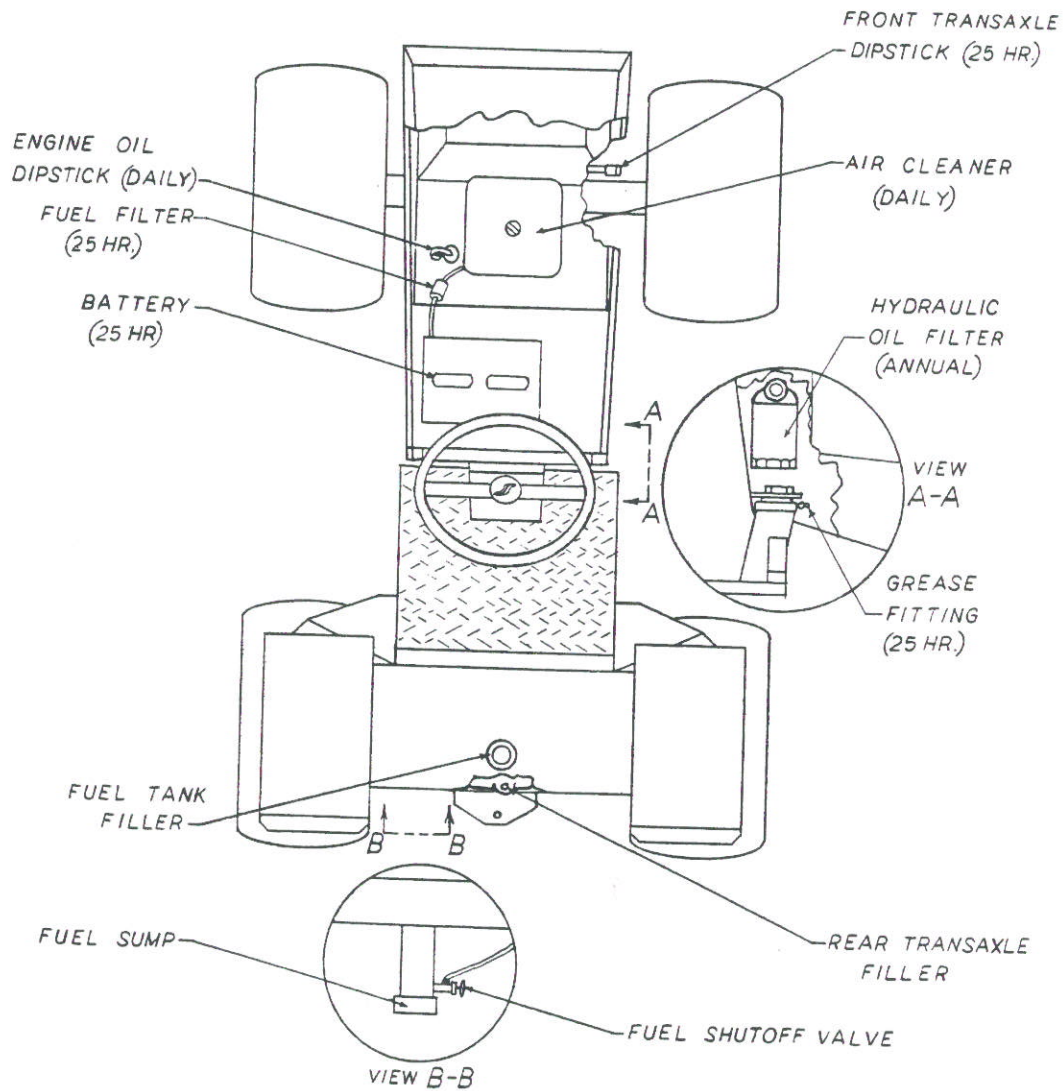
In addition to daily and 25 hour service:

1. Replace hydraulic oil filter  
Use Michigan Fluid Power S-29
2. When storing tractor  
Refill transaxles as needed  
Drain fuel tank  
Maintain tire pressures as specified

# Service Chart

KEEP IT CLEAN!

Figure 3

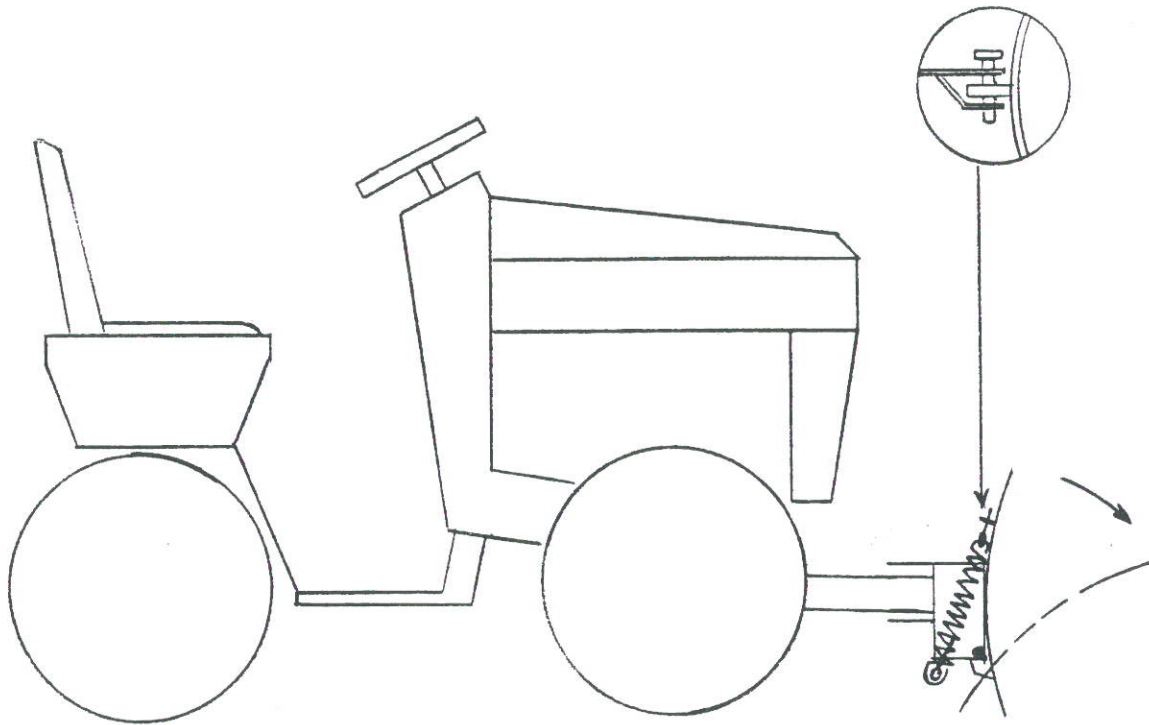




# Trouble Shooting

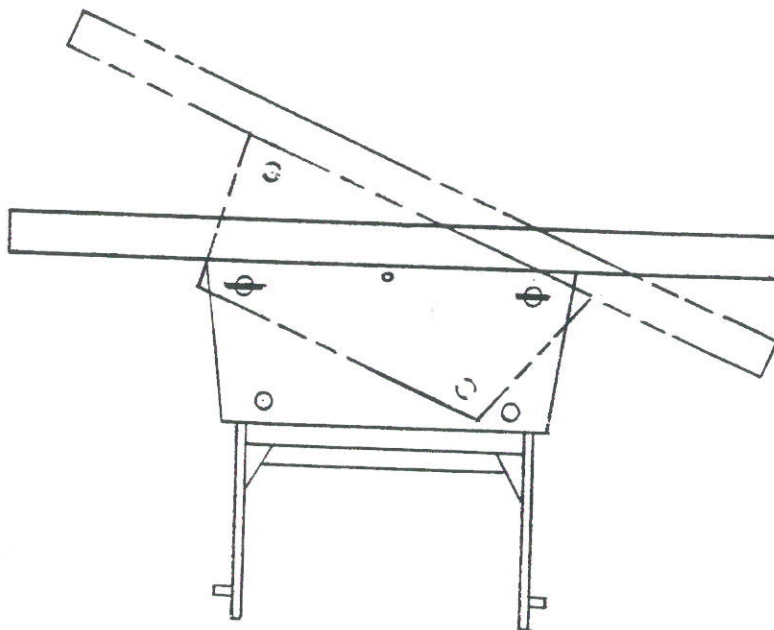
SYMPTOMS	POSSIBLE CAUSE	REMEDY
Engine fails to start.	<ol style="list-style-type: none"><li>1. Forward-reverse control not in neutral.</li><li>2. P.T.O. lever not in neutral.</li><li>3. Fuse blown.</li><li>4. Discharged battery.</li><li>5. Dirty fuel filter or out of fuel</li></ol>	<ol style="list-style-type: none"><li>1. Position control lever in neutral.</li><li>2. Position P.T.O. lever in neutral.</li><li>3. Replace with 14A fuse.</li><li>4. Charge battery.</li><li>5. Replace fuel filter, and/or fill.</li></ol>
Loss of power.	<ol style="list-style-type: none"><li>1. Dirty air cleaner.</li><li>2. Transaxle shifters not in same range.</li><li>3. Low oil level in transaxles.</li><li>4. Parking brake improperly adjusted.</li><li>5. Dirty fuel filter.</li></ol>	<ol style="list-style-type: none"><li>1. Remove air cleaner; clean or replace.</li><li>2. Shift both shift levers into proper range.</li><li>3. Refill transaxles to proper level.</li><li>4. Adjust parking brake.</li><li>5. Replace fuel filter.</li></ol>
Excessive wheel slippage.	<ol style="list-style-type: none"><li>1. Tire pressure too high.</li><li>2. One transaxle shifter in neutral.</li></ol>	<ol style="list-style-type: none"><li>1. Adjust tire pressure to 5 lbs.</li><li>2. Shift both shift levers into proper range.</li></ol>
Tractor jerks or is not responsive to control lever movement — too large neutral movement.	<ol style="list-style-type: none"><li>1. Loose pump control arm or linkage.</li><li>2. Low oil level in transaxle.</li><li>3. Loose or dirty hydraulic filter.</li><li>4. Transaxles in neutral.</li></ol>	<ol style="list-style-type: none"><li>1. Tighten pump control arm or linkage.</li><li>2. Refill transaxles to proper level.</li><li>3. Tighten or replace hydraulic filter.</li><li>4. Check shifters front and rear.</li></ol>
Noisy operation.	<ol style="list-style-type: none"><li>1. Low oil level in transaxles.</li><li>2. Loose or dirty hydraulic filter.</li><li>3. Low hydraulic pressure.</li><li>4. Restriction or air leak in pump supply lines.</li></ol>	<ol style="list-style-type: none"><li>1. Refill transaxles to proper level.</li><li>2. Tighten or replace hydraulic filter.</li><li>3. See your dealer for pump repairs.</li><li>4. Replace defective hose.</li></ol>
Loss of power steering.	Same as above.	Same as above.
Loss of lift (mower/blade)	Same as above.	Same as above.

# Blade



Dozer blade is equipped with spring "trip" to prevent damage to driveway surface.

For heavy work, insert pin to make blade solid.



ANGLE BLADE right or left by pulling one pin, move blade in desired direction and replace pin.



# Mower Operation

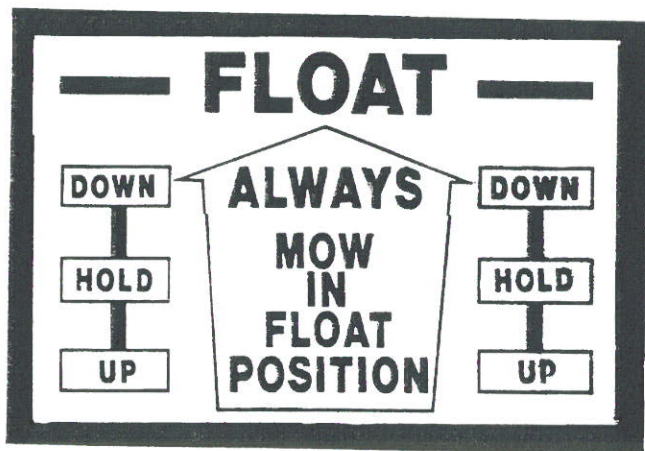
Be sure to observe all Safety Decals. When attaching the mower, drive tractor into place, engaging the quick attach. Make sure it is latched securely. Shut off tractor. DO NOT attempt to put drive belt on while tractor engine is running. MAKE SURE P.T.O. lever is in the OUT position.

- Release catch on idler assembly and move to the left. Put on belt, then engage the catch again. Belt adjustment is provided by moving drive idler in slotted hole.
- Make sure all guards are in place.
- Set mower to desired height.
- Start tractor and engage belt slowly.
- Make sure mower is in the FLOAT position. (See "LIFT")
- When mowing, pull the throttle most of the way back to ensure proper blade speed. Most level mowing can be done in "HIGH" gear with speed controlled by the FORWARD-REVERSE lever.
- When going UP steep grades, put tractor transaxles in "LOW" and keep engine at near full speed to minimize wheel slippage.
- When going DOWN steep inclines or loading on or off truck with mower on, put mower in the "DOWN" position to prevent lifting rear wheels off the ground.

## SAFETY PRECAUTIONS:

- A. Keep all guards in position.
- B. Do not work around mower when it is running.
- C. Watch out for debris in mowing area.
- D. Be extremely careful when mowing steep inclines. Mow up and down.

## Hydraulic Lift



The hydraulic lift is equipped with 2-way controls and cylinders.

Single spool valve is standard equipment.

2 or 3 spool valve is optional.

NOTE: Float position is available on the front lift only.

## WARNING:

**Mower MUST be operated in the FLOAT position to prevent damage.**

# Mower Maintenance

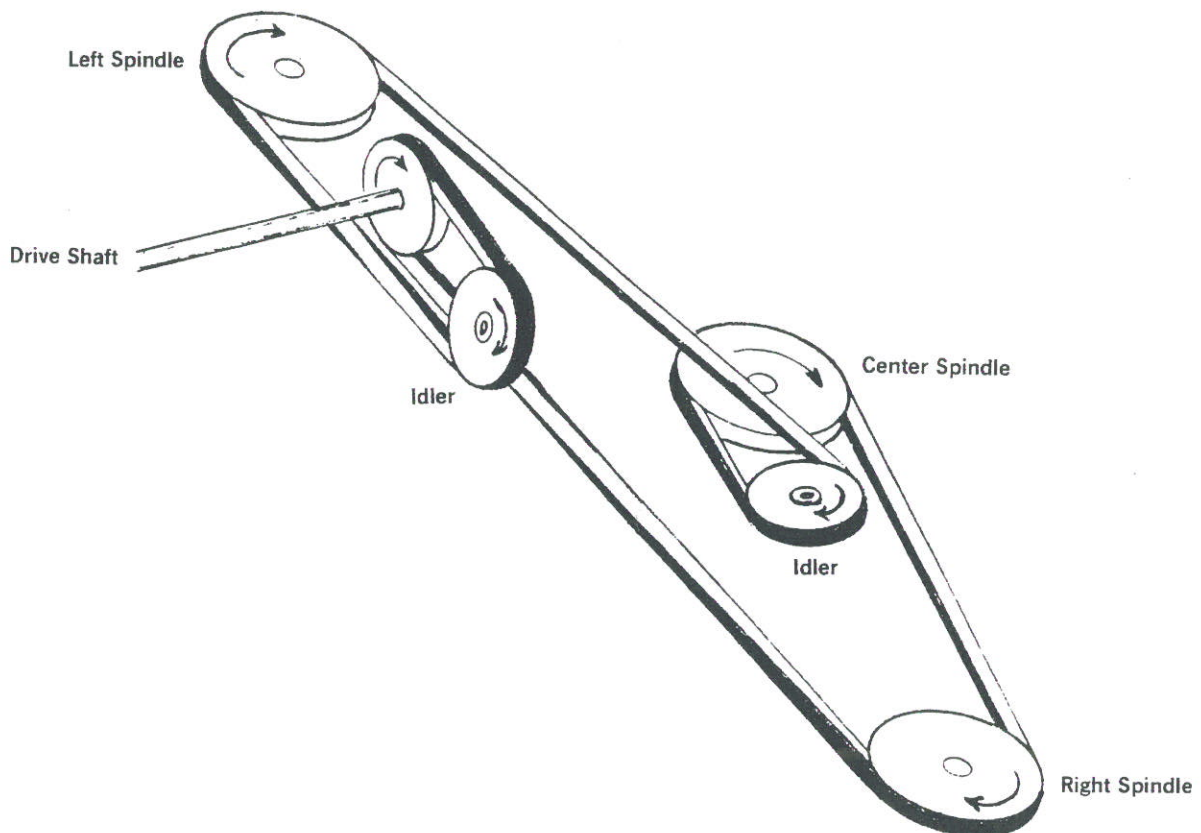
DAILY: Visual inspection for loose parts and accumulation of grass and dirt. Keep blades sharp.

25 HOUR: In addition to above; grease fittings - DO NOT over grease.

ANNUAL: In addition to above; remove and sharpen blades, clean and wash deck prior to storage. The acid in grass causes corrosion to mower parts. Replace belts as needed.

Installing main drive belt:

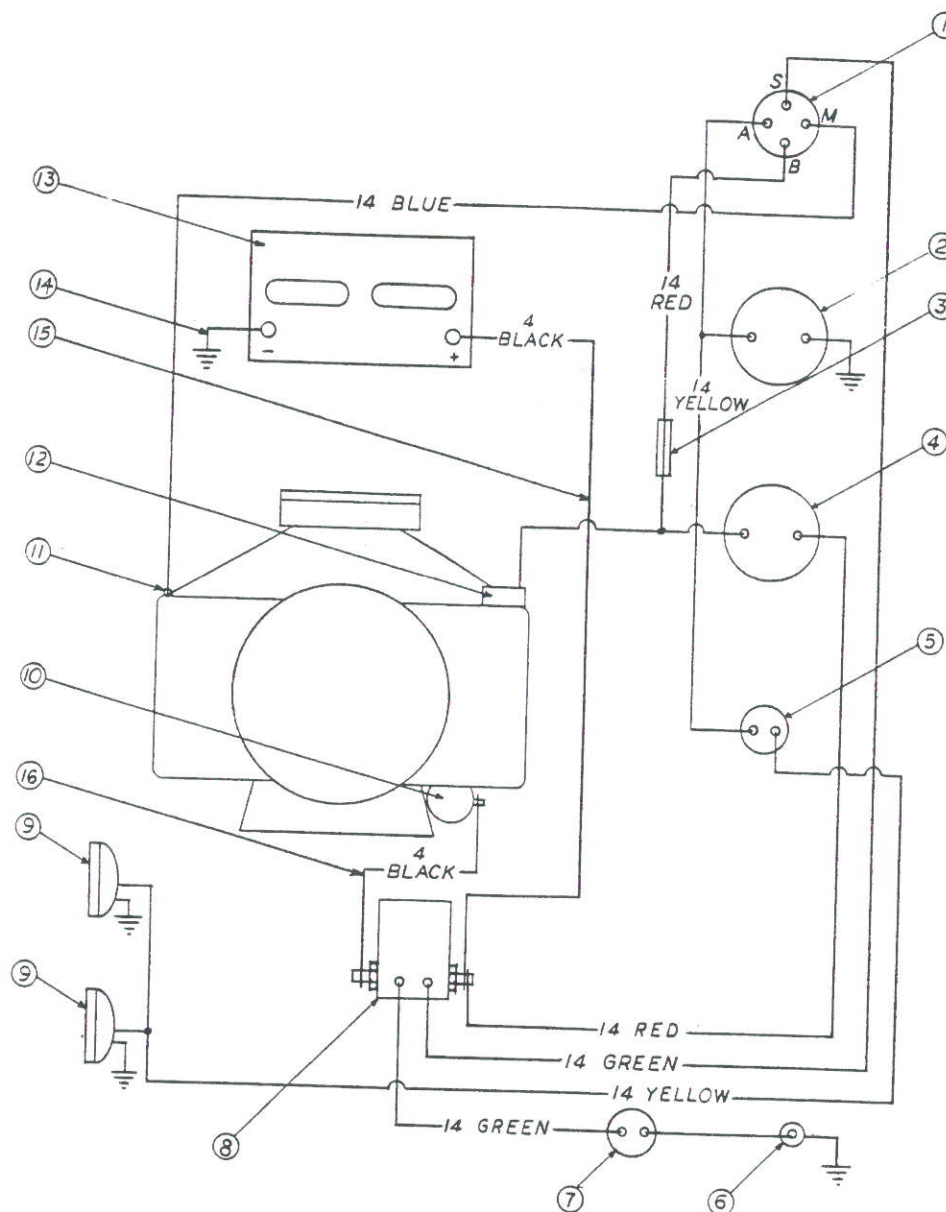
1. Remove top shield and cotter pin between attaching arms. No further disassembly is necessary.
2. Follow illustration below and install belt as shown.





# Electrical

Figure 4

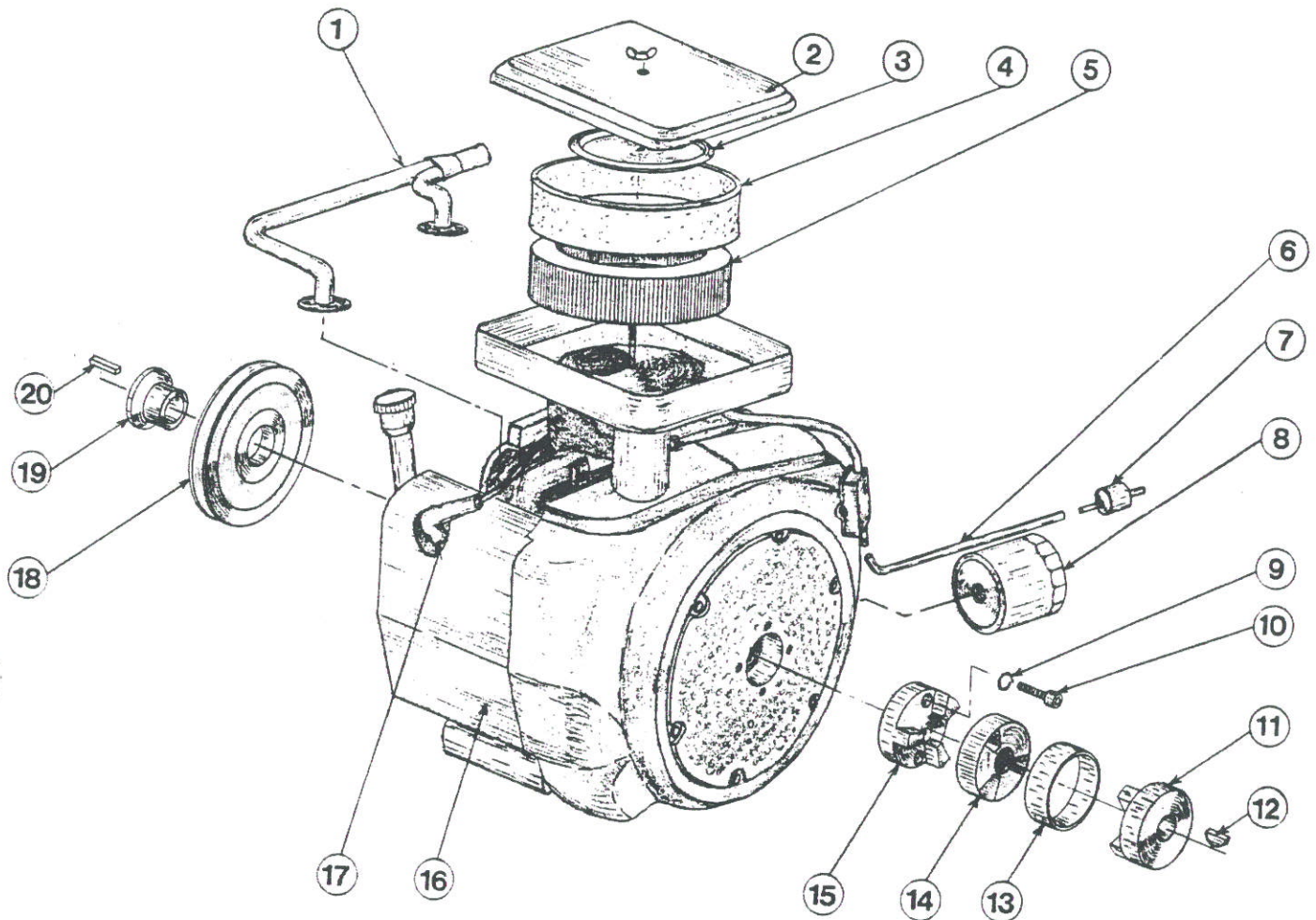


LEGEND  
 COLOR - CIRCUIT  
 RED - BATTERY  
 GREEN - START  
 YELLOW - ACC.  
 BLUE - IGNITION

REF.	PART NO.	DESCRIPTION	QUAN.	REF.	PART NO.	DESCRIPTION	QUAN.
1	31-01	Ignition Switch (B&S)	1	7	31-04	Switch, PTO Neutral	1
	31-02	Ignition Switch (Onan)	1	8	31-05	Solenoid	1
2	35-14	Hour Meter	1	9	33-01	Light	2
3	35-15	Fuse 14A	1	10	Sup. by Eng. Mfr.	Starter	
4	35-16	Ammeter	1	11	Sup. by Eng. Mfr.	Magneto or Coil	
5	31-03	Light Switch	1	12	Sup. by Eng. Mfr.	Voltage Regulator	
6		Neutral Start Contact		13	33-02	Battery, Group 22F	1
	90-0406	Bolt	1	14	30-01	Negative Ground Cable	1
	94-04	Washer	2	15	30-02	Positive Batt. Cable	1
	99-A04	Locknut	1	16	30-03	Starter Cable	1
	05-05	Grommet	1		30-04	Wiring Set, Complete	

# Engine

Figure 5



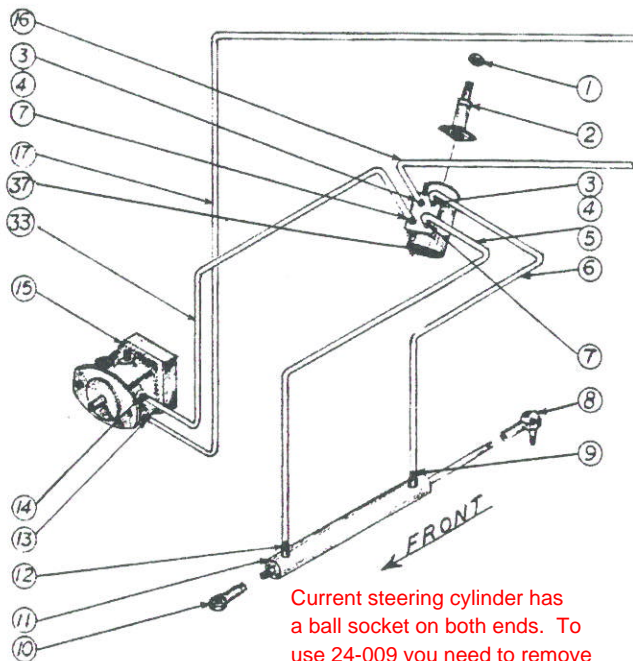
REF.	PART NO.	DESCRIPTION	QUAN.	REF.	PART NO.	DESCRIPTION	QUAN.
1	14-02	Exhaust Manifold (ONAN)	1	11	87-25	Coupler Pump	1
Not Illus.	14-06	Muffler (ONAN)	1	12	85-W0305	Key, Woodruff	1
Not Illus.	14-07	Muffler Bracket (ONAN)	1	13	87-26	Retainer	1
2	See Eng. Mfr.	Cover	1	14	87-24	Insert Coupler	1
3	See Eng. Mfr.	Plate	1	15	87-23	Coupler, Engine (ONAN)	1
4	13-06	Filter, Air (ONAN)	1		87-22	Coupler, Engine (B&S)	1
	13-01	Filter, Air (B&S)	1	16	13-08	Engine, Complete (ONAN)	1
5	13-07	Precleaner (ONAN)	1		13-03	Engine, Complete (B&S)	1
	13-02	Precleaner (B&S)	1	17	13-10	Spark Plug, Champion	
6	11-02	Fuel Line (To Pump)	1			(ONAN) RBN-13Y	2
	11-04	Fuel Line (To Tank)	1		13-05	Spark Plug, Champion	
7	11-03	Fuel Filter	1			(B&S) R-J8	2
8	13-11	Oil Filter (ONAN)	1	18	83-BK60H	Pulley	1
9	99-G02	Lock Washer (ONAN)	2	19	83-H18	Bushing (ONAN)	1
	99-G01	Lock Washer (B&S)	2		83-H16	Bushing (B&S)	1
10	99-12	Cap Screw (ONAN)	2	20	85-K0410	Key	1
	99-11	Cap Screw (B&S)	2				



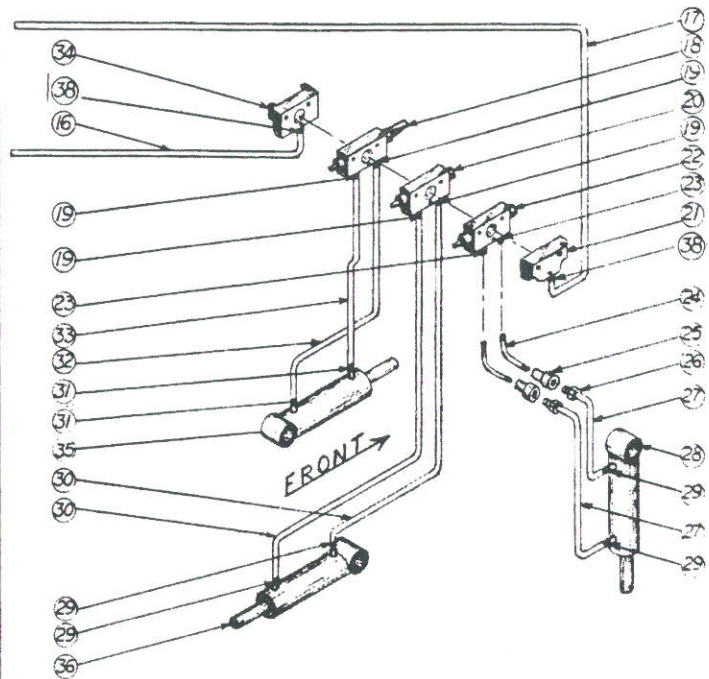


# Hydraulic System - Implement Circuit

Figure 7



LEFT SIDE VIEW



RIGHT SIDE VIEW

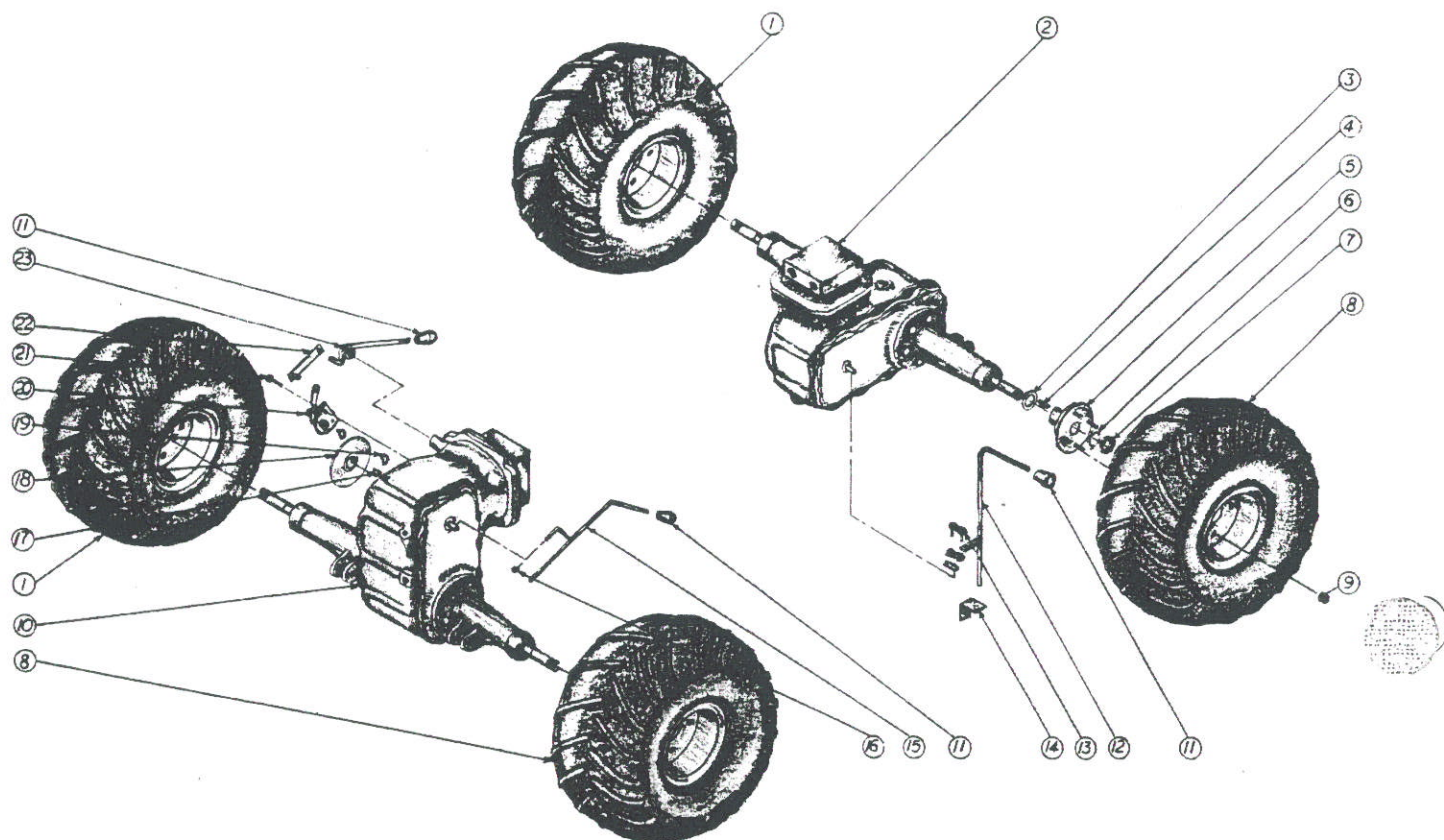
REF.	PART NO.	DESCRIPTION	QUAN.
1	99-E02	Nut (Before A30015)	1
	99-E11	Nut (A30015- )	1
2	23-01	Steering Post (Before A30015)	1
3	25-0502-8-4	Adapter (Before A30015)	2
4	25-5603-8-6	Fitting 90° (Before A30015)	2
5	20-05	Hose 1/4 x 30 (Before A30015)	1
	20-28	Hose 1/4 x 28 (A30015- )	1
6	20-06	Hose 1/4 x 24 (Before A30015)	1
	20-27	Hose 1/4 x 22 (A30015- )	1
7	25-2503-8-6	Fitting O-Ring (Before A30015)	2
8	43-10S	Spherical Rod End	1
9	25-0103-4-6	Fitting	1
10	43-08	Spherical ball End	1
11	23-02 use 24-009	Steering Cylinder	1
12	25-2103-4-6	Fitting 90°	1
13	25-2503-6-6	Fitting 90° O Ring	1
14	25-053T-6-6	Tee, O Ring	1
	25-06CP-6	Cap	1
15	21-03	Hydraulic Pump	
16	20-07	Hose 1/4 x 20 (Before A2073)	1
	20-06	Hose 1/4 x 24 (A2073- )	1
17	20-08	Hose 1/4 x 26 (Before A2073)	1
	20-28	Hose 1/4 x 28 (A2073- )	1
18	23-06	Valve Body (Std.) Single with Float (Before A2073)	1
	23-10	Valve Body (A2073- )	1
19	25-0503-6-6	Fitting, O Ring	as req'd
20	23-07	Vale Body, 3 Pt. Hitch (Optional) (Before A2037)	1
	23-11	Valve Body, 3 Pt. Hitch (Optional) (A2037- )	1

REF.	PART NO.	DESCRIPTION	QUAN.
21	Sub 23-06	Complete Valve (Before A2073)	
	Sub 23-10	Complete Valve (A2073- )	
22	23-07	Valve Body (Optional)	
	23-11	Implement Cyl. (Before A2073)	1
		Valve Body (Optional)	
		Implement Cyl. (A2073- )	1
23	25-0502-6-4	Adapter, O Ring (Optional)	2
24	29-13	Pipe Special (Optional)	2
25	23-03	Coupler, Female (Optional)	2
26	23-04	Coupler, Male (Optional)	2
27	20-09	Hose 1/4 x 48 (Optional)	2
28	23-05	Implement Cylinder (Optional)	1
29	25-2103-6-6	Fitting 90°	as req'd
30	20-10	Hose 1/4 x 65, 3 Pt. Hitch	2
31	25-3103-6-6	Fitting 45°	2
32	20-11	Hose 1/4 x 12-1/2 (Before A2073)	1
	20-25	Hose 1/4 x 11-1/2 (A2073- )	1
33	20-12	Hose 1/4 x 18 (Before A2073)	2
	20-26	Hose 1/4 x 17 (A2073- )	2
34	Sub 23-06	Complete Valve (Before A2073)	
	Sub 23-10	Complete Valve (A2073- )	
35	23-05	Cylinder, Front Lift	1
36	23-05	Cylinder, 3 Pt. Hitch	1
37	23-09	Steering Valve (Before A30015)	1
	23-14	Steering Valve (A30015- )	1
38	25-0503-6-6	Fitting, O Ring (Before A30015)	2
	25-2503-6-6	Fitting 90° O Ring (A30015- )	2



# Axles & Wheels

Figure 8

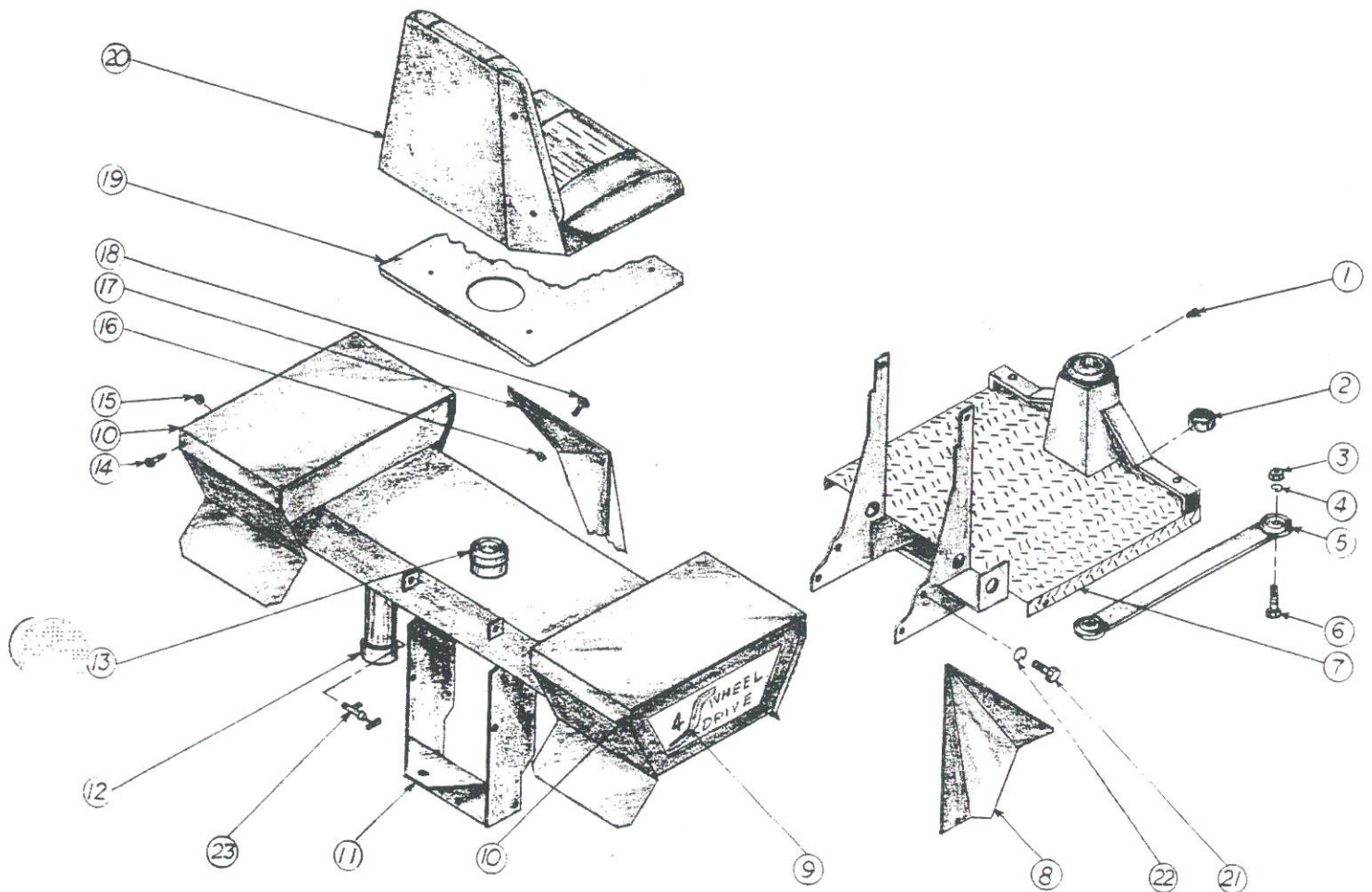


REF.	PART NO.	DESCRIPTION	QUAN.
1	53-15	Wheel & Tire Assembly (left)	2
2	51-01	Transaxle, Front, less Motor	1
3	99-B11	Washer Special (Before A40158)	4
4	85-W0417	Key (Before A40158)	4
	85-K0410	Key (A40158- )	4
5	53-17	Hub (Before A40158)	4
	53-35	Hub (A40158- )	4
	83-P118	Bushing (A40158- )	4
6	53-18	Lock Tab (Before A40158)	4
7	53-19	Nut (Before A40158)	
8	53-16	Wheel & Tire Assembly (right)	2
9	99-E01	Nut, Lug	16
10	51-02	Transaxle, Rear (less Motor)	1
11	47-01	Knob, small	3
12	40-30	Lever, Front Shift	1

REF.	PART NO.	DESCRIPTION	QUAN.
13	81-24	Link	1
14	40-31	Clip	1
15	40-32	Lever, Rear Shift (A-0001-A2999)	1
	40-106	Lever, Rear Shift (A3000- )	1
	40-107	Link, Rear Shift (A3000- )	1
16	99-A04	Lock Nut	1
17	85-W-0306	Key, Woodruff	1
18	53-20	Disc, Parking Brake	1
19	53-21	Puck Brake — set of	2
20	53-22	Brake Assembly	1
21	90-0612	Bolt	2
22	40-33	Link, Brake	1
23	40-34	Lever, Brake	1

# Rear Parts

Figure 9



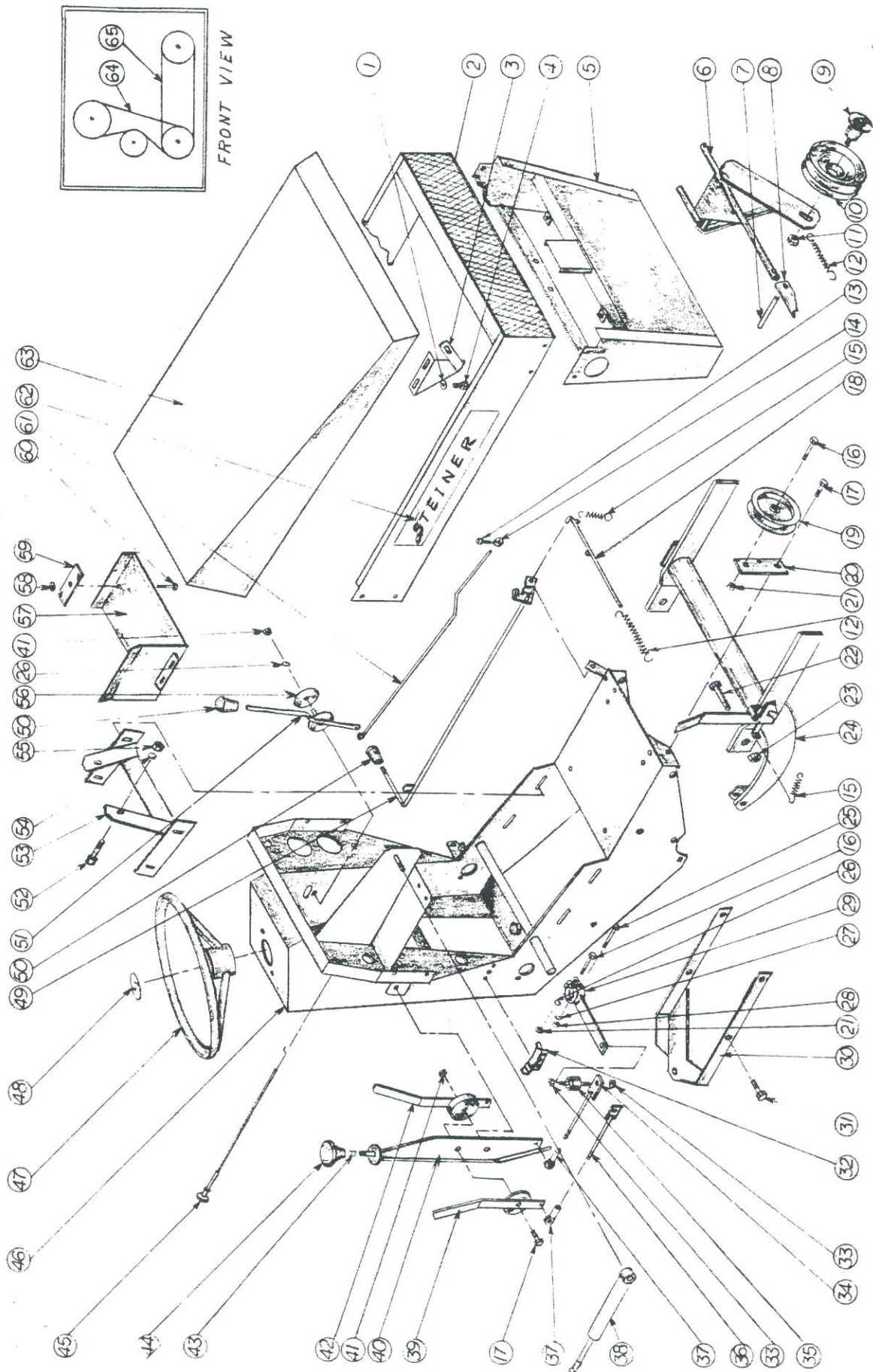
Ref	PART NO.	DESCRIPTION	Quan.
1	29-14	Grease Fitting	1
2	99-A16	Lock, Nut	1
3	93-10	Nut	as reqd
4	96-10	Lock Washer	as reqd
5	62-116	Center Link	1
6	91-1016	Bolt	2
7	62-117	Frame, rear	1
8	60-52	Lower, Fender, Right	1
9	00-05	Decal, 4 Wheel Drive	2
10	60-54	Fender Lid	2
11	*62-118	Frame, Tank & Hitch	1
12	29-15	Cap 2" Pipe	1
13	47-07	Cap, Fuel Filler	1

Ref	PART NO.	DESCRIPTION	Quan.
14	90-0406	Bolt	as reqd
15	99-A04	Locknut	as reqd
16	92-04	Nut	as reqd
17	60-53	Lower Fender, Left	1
18	90-0404	Bolt	as reqd
19	62-119	Seat Plate	1
20	47-08	Seat Assembly	1
21	90-0814	Bolt	as reqd
22	96-08	Lockwasher	as reqd
23	29-16	Fuel Valve	1
24	64-07	Pin, Cylinder (optional)	1
25	02-CP0516	Cotter Pin	2



# Front Parts

Figure 10

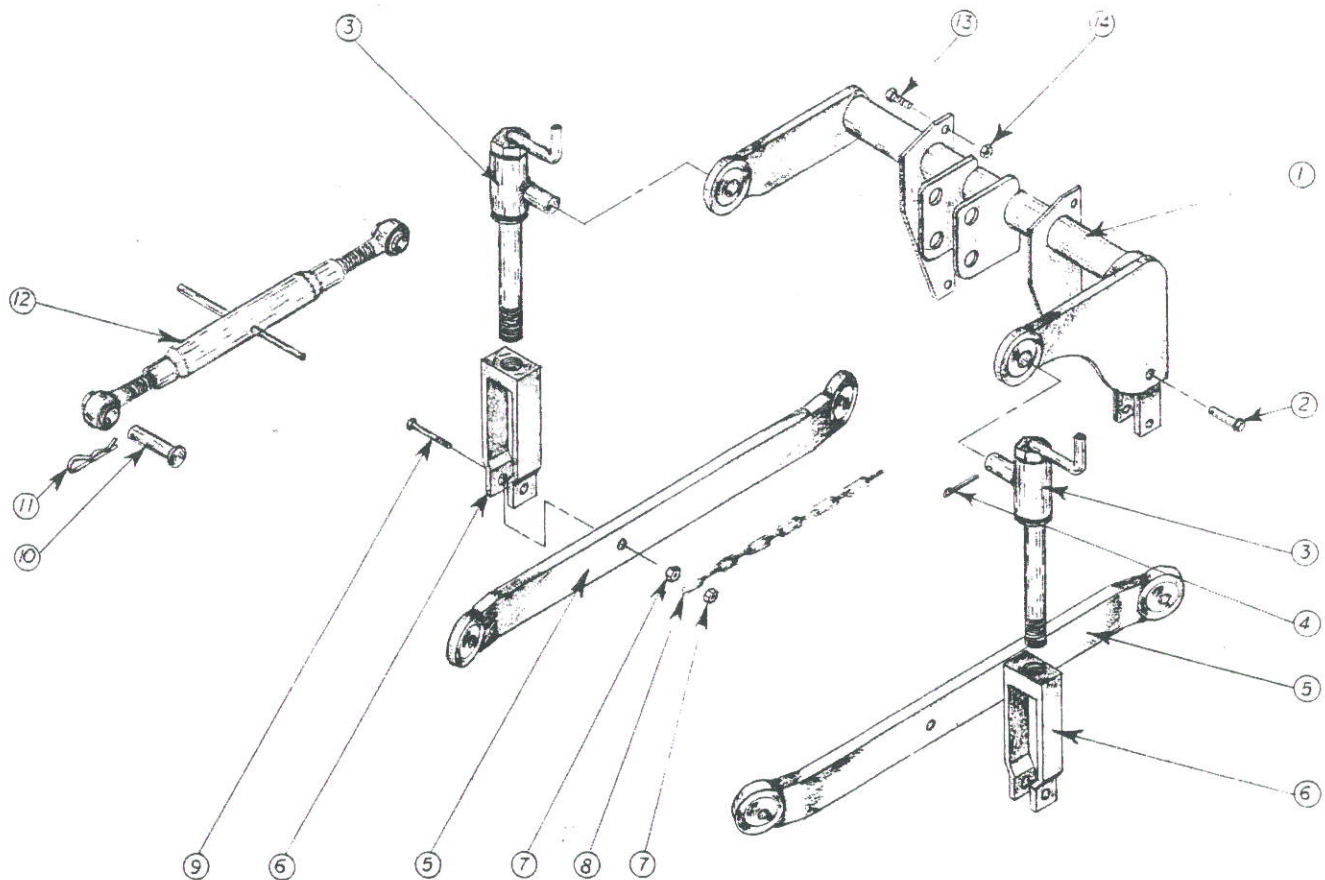


REF.	PART NO.	DESCRIPTION	QUAN.
1	94-04	Washer	4
2	60-47	Upper Grille (B&S)	1
	60-48	Upper Grille (Onan)	1
3	64-02	Hinge, Hood right (B&S)	1
	64-01	Hinge, Hood left (B&S)	1
	64-04	Hinge, Hood right (Onan)	1
	64-03	Hinge, Hood left (Onan)	1
4	90-0406	Bolt	4
5	60-49	Lower Grille (B&S)	1
6	62-110	Lower Grille (Onan)	1
7	02-RP1224	Drive Idler Frame	1
8	64-05	Roll Pin	1
9	83-IDH1	Release Catch	1
10	83-2BK50H	Idler Bushing	1
11	92-08	Drive Idler	1
12	41-10	Nut	1
13	99-13	Spring	2
14	85-SC04	Socket Head Cap Screw	1
15	41-13	Set Collar	1
16	90-0614	Spring	2
17	90-0610	Bolt	as reqd
18	42-46	Bolt	as reqd
19	83-13	Link, PTO	1
20	40-35	Idler, PTO	1
21	92-06	Idler Arm	1
22	90-102A	Nut	as reqd
23	99-A10	Bolt	2
24	62-111	Locknut	2
25	90-0416	Front Lift	1
26	96-04	Bolt	1
27	96-06	Lock Washer	as reqd
28	92-04	Lock Washer	as reqd
29	40-36	Nut	as reqd
30	62-112	Lever, pump control	1
31	90-0810	Frame, Front Lower	1
32	42-47	Bolt	as reqd
33	92-04	Neutral Stop	1
34	42-48	Nut	as reqd
35	05-01	Link, Pump Control	1
		Isolator	1



### 3-Point Hitch

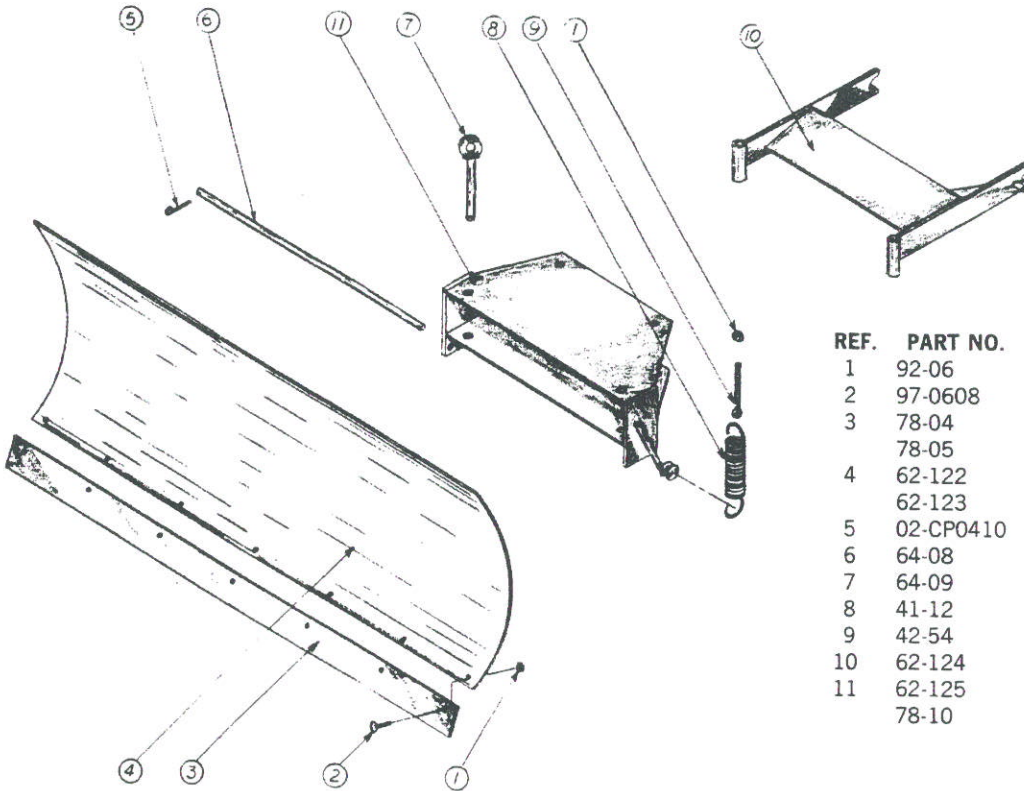
Figure 11



Ref	PART NO.	DESCRIPTION	Quan.
1	62-120	Rockshaft Assembly	1
2	03-0610	Clevis Pin	1
3	42-52	Lift Adjuster	2
4	02-CPO410	Cotter Pin	2
5	62-121	Draft Link	2
6	42-53	Lift Link	2
7	99-A06	Lock Nut	4
8	45-14	Chain, Sway	2

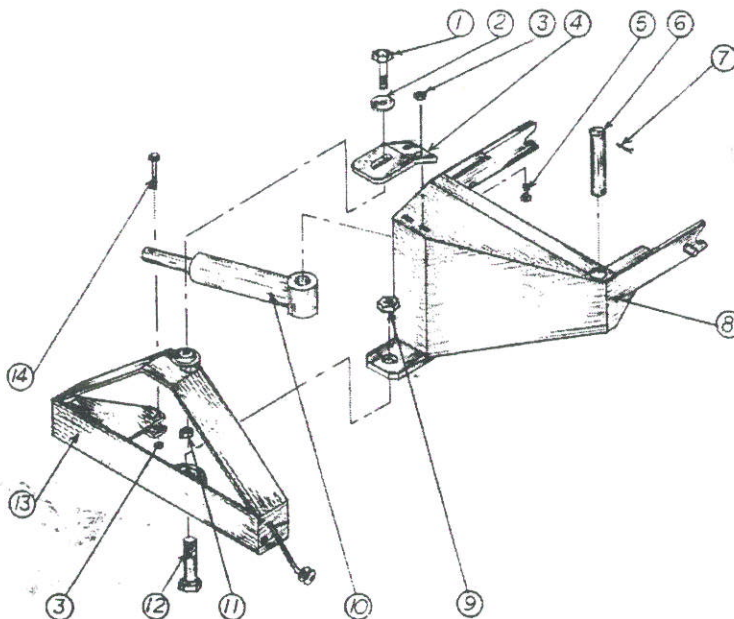
Ref	PART NO.	DESCRIPTION	Quan.
9	90-0616	Bolt	2
10	03-1020	Clevis Pin	2
11	02-PP03	Clip Pin	2
12	47-09	Top Link	1
13	90-0610	Bolt	as reqd
14	92-06	Nut	as reqd

## Blade Figure 12A



REF.	PART NO.	DESCRIPTION	QUAN.
1	92-06	Nut	As Req'd.
2	97-0608	Bolt, Carriage	As Req'd.
3	78-04	Cutting Edge 48"	1
	78-05	Cutting Edge 60"	1
4	62-122	Blade 48"	1
	62-123	Blade 60"	1
5	02-CP0410	Cotter Pin	2
6	64-08	Rod	1
7	64-09	Pin	2
8	41-12	Spring	2
9	42-54	Adjuster, Spring	2
10	62-124	Frame, Attaching	1
11	62-125	Sub Frame	1
	78-10	Skid Shoes, Complete	2

## Blade - Power Angle Hitch (Optional) Figure 12B



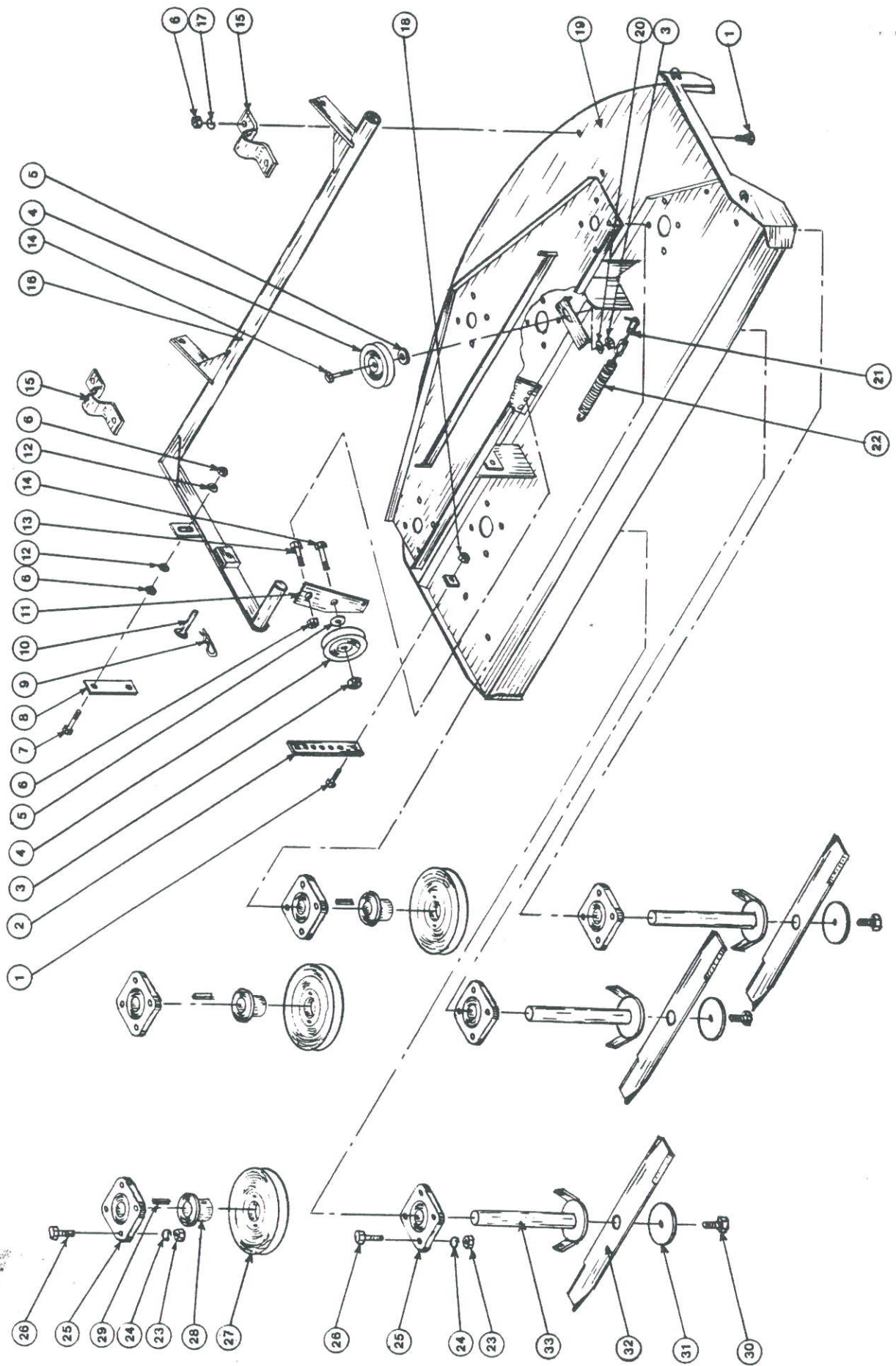
REF.	PART NO.	DESCRIPTION	QUAN.
1	90-1020	Bolt	1
2	94-10	Washer	1
3	92-06	Nut	3
4	64-61	Plate	1
5	90-0610	Bolt	2
6	64-62	Cylinder Pin	1
7	02-CP0516	Cotter Pin	2
8	62-200	Frame, Attaching	1
9	99-E04	Locknut	1
10	23-05	Cylinder	1
11	99-A10	Locknut	1
12	91-1624	Bolt	1
13	62-201	Sub-Frame	1
14	90-0620	Bolt	1

See Fig. 7 for Hoses & Fittings



# Mower Deck

Figure 13

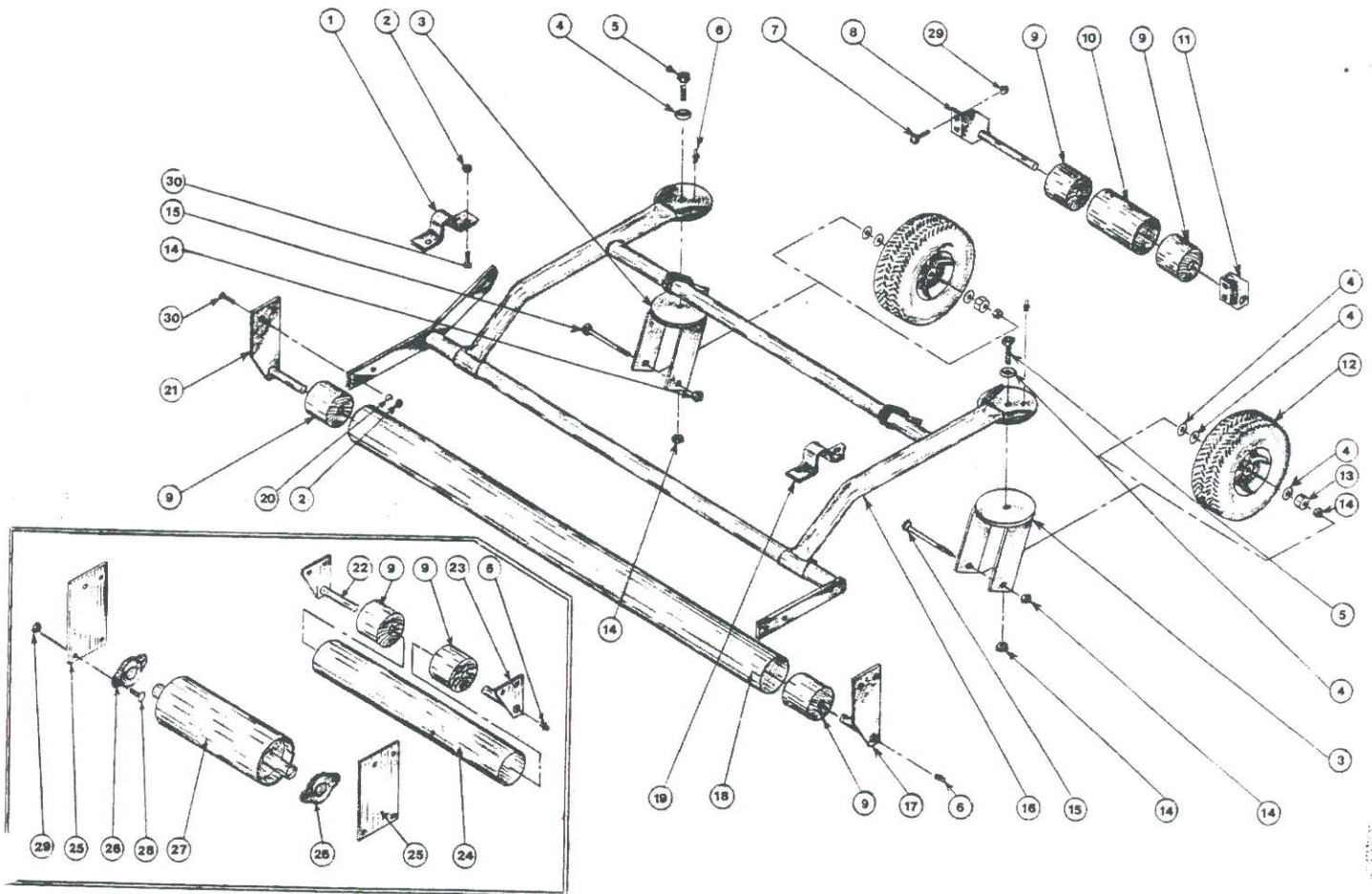


REF.	48"	60"	72"	DESCRIPTION	QUAN.
1	PART NO. 90-0610	PART NO. 90-0610	PART NO. 90-0610	Bolt	as req'd
2	64-15	64-15	64-101	Strap, Adjusting	1
3	92-08	92-08	92-08	Nut	as req'd
4	83-12	83-12	83-12	Idle Pulley	2
5	99-B12	99-B12	99-B12	Spacer	2
6	92-06	92-06	92-06	Nut	as req'd
7	90-0612	90-0612	90-0612	Bolt	2
8	42-55	42-55	42-180	Link, Connecting	1
9	02-PP03	02-PP03	02-PP03	Clip Pin	1
10	03-0610	03-0610	03-0610	Clevis Pin	1
11	40-43	40-43	40-43	Idle Arm	1
12	94-06	94-06	94-06	Flat Washer	as req'd
13	90-0610	90-0610	90-0610	Bolt	as req'd
14	90-0816	90-0816	90-0816	Bolt	2
15	64-11	64-13	64-13	Clamp	2
16	40-44	40-45	40-104	Lever Height Adj.	1
17	96-06	96-06	96-06	Lock Washer	as req'd
18	99-A06	99-A06	99-A06	Lock Nut	as req'd
19	62-133	62-134		Deck (Before A3001)	1
20	62-198	62-199	62-324	Deck (A3001- )	1
21	94-08	94-08	94-08	Flat Washer	as req'd
22	45-10	45-10	45-10	Chain	1
23	41-10	41-10	41-10	Spring	1
24	92-07	92-07	92-07	Nut	24
25	96-07	96-07	96-07	Lock Washer	24
26	55-FB22016	55-FB22016	55-FB22016	Bearing	6
27	90-0710	90-0710	90-0710	Bolt	24
28	83-BK50H	83-BK60H	83-BK80H	Pulley	3
29	83-H16	83-H16	83-H16	Bushing	3
30	85-K0410	85-K0410	85-K0410	Key	3
31	90-0808	90-0808	90-0808	Bolt	3
32	99-B14	99-B14	99-B14	Washer, Special	3
33	79-14	79-15	79-22	Blade	3
	80-45	80-45	80-45	Spindle (Before A4001)	3
	80-115	80-115	80-115	Spindle (A4001- )	3



# Mower Frame

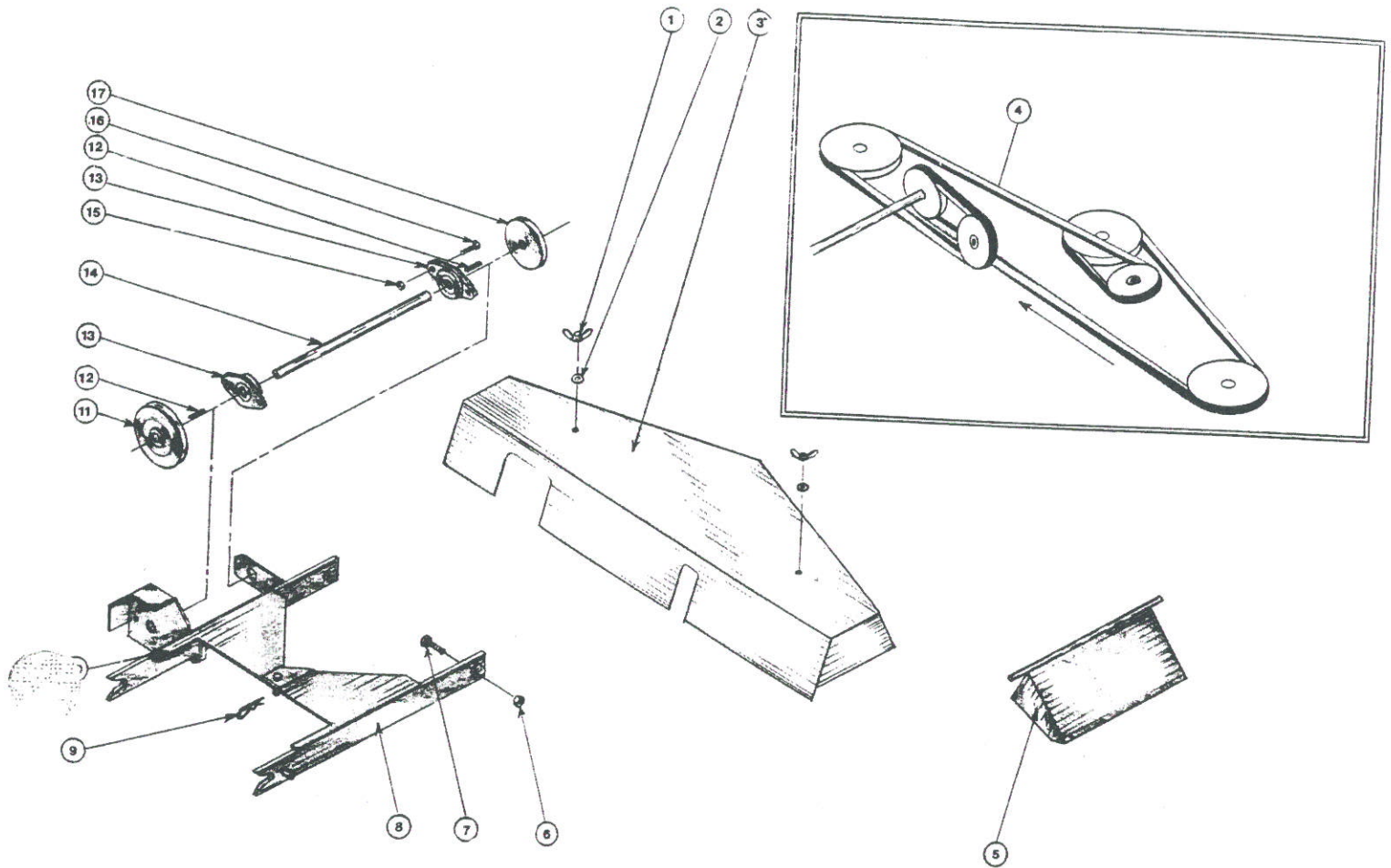
Figure 14



REF.	48" PART NO.	60" PART NO.	72" PART NO.	DESCRIPTION	QUAN.
1	64-11	64-13	64-13	Clamp, Left	1
2	92-06	92-06	92-06	Nut	as req'd
3	50-01	50-01	50-17	Caster Wheel Frame	2
4	94-08	94-08	94-08	Flat Washer	as req'd
5	90-0812	90-0812	90-0812	Bolt	2
6	29-10	29-10	29-10	Grease Fitting	4
7	90-0506	90-0506	90-0506	Bolt	as req'd
8	Optional	50-06	50-06	Brackets, Front Roller	1
9	85-B11	85-B11	85-B11	Bearing, Wood	as req'd
10	Optional	50-07	50-07	Roller	1
11	Optional	50-06	50-06	Brackets, Front Roller	1
12	53-23	53-23	53-37	Wheel	2
13	92-10	92-10	92-10	Nut	as req'd
14	92-08	92-08	92-08	Nut	as req'd
15	90-0840	90-0840	90-1044	Bolt	2
16	62-129	62-130	62-323	Frame	1
17	50-02	50-02	See Ref. 25	Roller Support, Right	1
18	50-04	50-05	See Ref. 27	Roller	1
19	64-12	64-14	64-13	Clamp, Right	1
20	96-06	96-06	96-06	Lock Washer	as req'd
21	50-03	50-03	See Ref. 25	Roller Support, Left	1
22			50-19	Roller Support, Left	1
23			50-20	Roller Support, Right	1
24			50-21	Anti-Scalp Roller	1
25			64-100	Bearing Support	4
26			55-FB16016	Bearing	4
27			50-18	Roller	2
28			97-0508	Bolt, Carriage	2
29	92-05	92-05	92-05	Nut	as req'd
30	90-0610	90-0610	90-0610	Bolt	as req'd

# Mower Hitch

Figure 15



REF.	48" PART NO.	60" PART NO.	72" PART NO.	DESCRIPTION	QUAN.
1	99-E03	99-E03	99-E03	Wing Nut	2
2	94-05	94-05	94-05	Flat Washer	2
3	60-60	60-58		Shield, Right (Before A3001)	1
	60-59	60-59		Shield, Center (Before A3001)	1
	60-61	60-57		Shield, Left (Before A3001)	1
	60-118	60-119	60-173	Top Shield (A3001- )	1
4	81-A128	81-A144	81-A180	Belt	1
5	60-55	60-56		Discharge Chute (Before A3001)	1
	60-56	60-56	60-56	Discharge Chute (A3001- )	1
6	99-A08	99-A08	99-A08	Lock Nut	2
7	90-0812	90-0812	90-0812	Bolt	2
8	62-132	62-132	62-132	Hitch Arm, Right	1
9	02-PP03	02-PP03	02-PP03	Clip Pin	1
10	62-131	62-131	62-131	Hitch Arm, Left	1
11	83-BK5012	83-BK5012	83-BK5012	Pulley	1
12	85-K0310	85-K0310	85-K0310	Key	2
13	55-FB23012	55-FB23012	55-FB23012	Bearing	2
14	80-44	80-44	80-44	Shaft	1
15	92-06	92-06	92-06	Nut	4
16	90-0610	90-0610	90-0610	Bolt	4
17	83-BK4012	83-BK4012	83-BK4012	Pulley	1