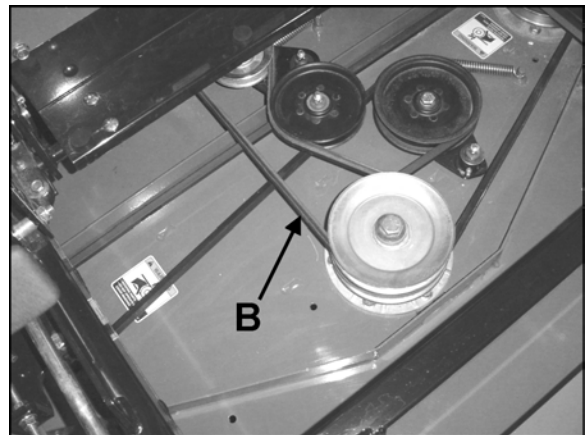
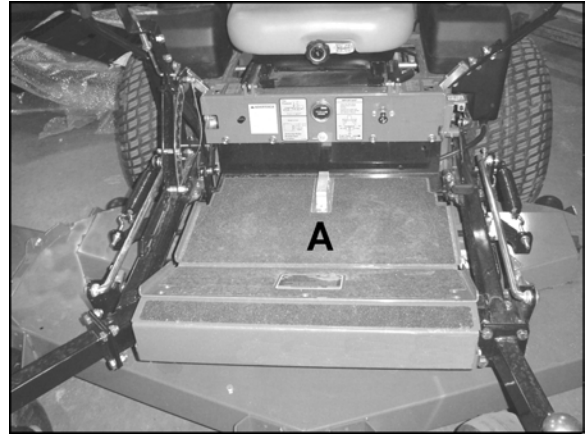


INTRODUCTION: This instruction sheet covers the installation of the Electric Deck Lift Kit (970309). Models without deck height adjusters require kit (970312).

1. Remove foot plate **A** and set aside.
2. Lower mower deck onto 4 X 4 blocks or similar.
3. Disconnect PTO belt **B**.

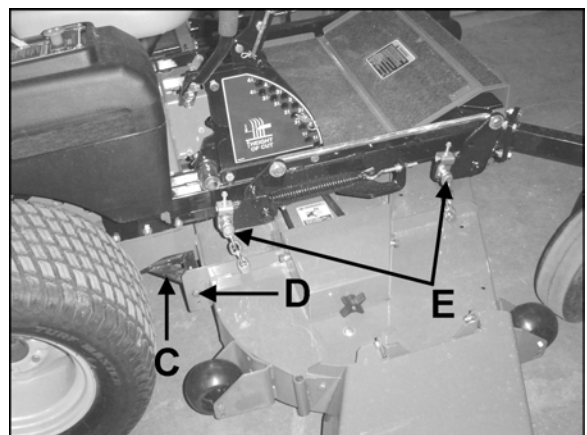


4. Remove bolts connecting push arms **C** to engine deck and retain for later use.

NOTE: Leave push arms attached to mower deck at location **D**.

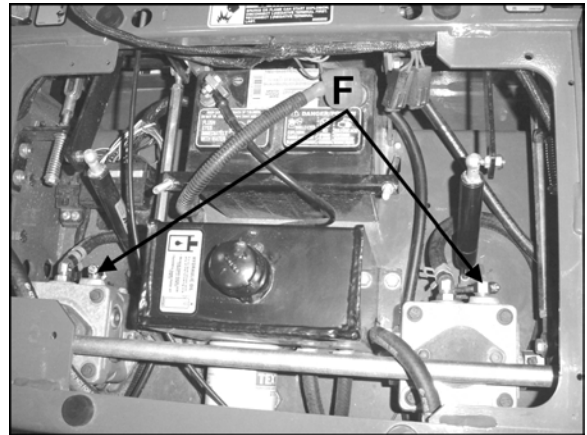
5. Disconnect lift chains **E** at lift arms and retain hardware for later use. Repeat for opposite side.

NOTE: Leave chains attached to mower deck.

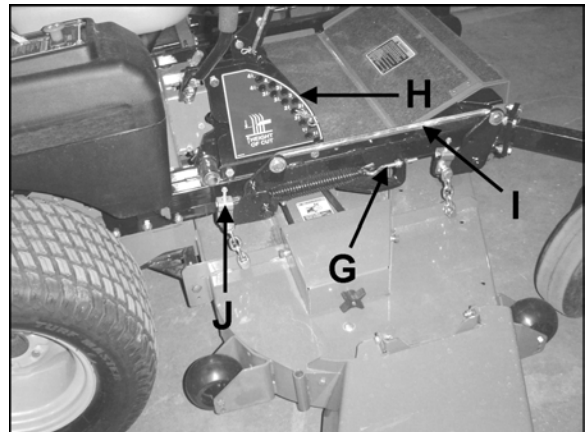


6. Open dump valves **F** on the hydraulic pumps.
7. Lift front of machine and push back away from mower deck.
8. Raise machine and support engine deck front and rear with jackstands.

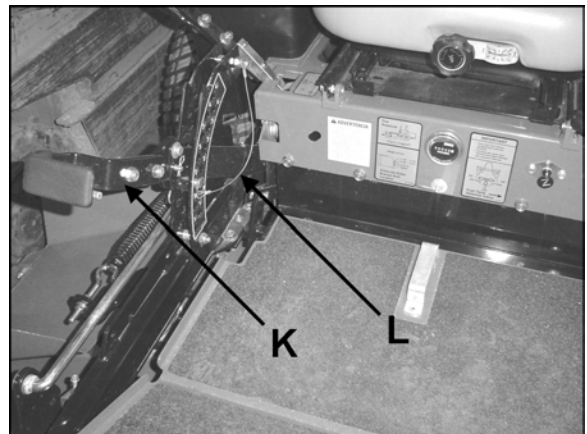
NOTE: Do not support front of machine near casters.



9. Loosen eyebolt **G** and remove assist springs and brackets.
10. Remove inner and outer deck bracket plates **H** (with height of cut decals on them). Retain spacers, height of cut pin and lanyard **L** for later use.
11. Remove deck lift rods **I**.
12. Remove rear deck lift shaft and adjusters **J**. Retain adjusters, hanger brackets and hardware for later use.
On models without adjusters **J**, remove the front deck lift shaft. Retain hanger brackets and fasteners for later use.



13. Remove and retain the (12) fasteners, (6) on each side, connecting the cradle to the engine deck.
14. Remove the cradle.
15. Remove deck lift lever **K** and linkage.
16. Bolt cradle back onto engine deck, using the (12) bolts removed in Step 13.



NOTE: Refer to the parts list on Page 8 for parts identification. Refer to Pages 6 & 7 illustrations for location of parts included in kit assembly procedures.

1. Install new rear lift shaft **12** as shown on Page 6 using the hanger brackets and fasteners removed in Step 12, Page 2. Models originally without deck lift adjusters: Install new front lift shaft **36**, from kit (970312). Tighten fasteners.
2. Install actuator mounting bracket **9** as shown on Page 7 to cradle, using (4) M10-1.5 X 65 bolts **20**, (4) M10 washers **33**, (2) bolt plates **8** and (4) M10-1.5 locknuts **32**. Tighten fasteners.
3. Re-install deck lift rods **I**, removed in Step 11, Page 2 with ends pointing inward, using (8) washers **29** and (4) e-rings **23** as shown on Page 6. On models originally without deck lift adjusters, install new deck lift rods **38** from kit (970312).

Steps 4 - 8 see illustration on Page 7.

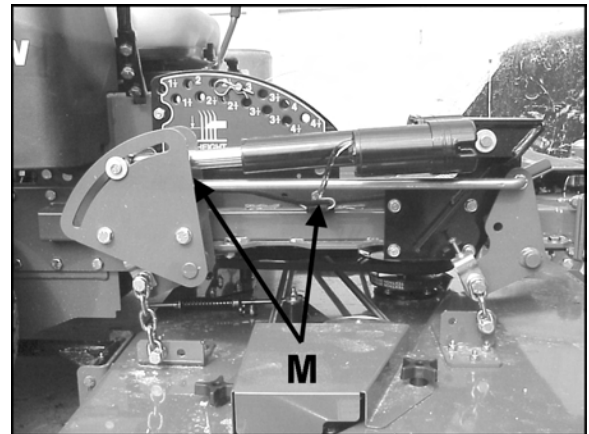
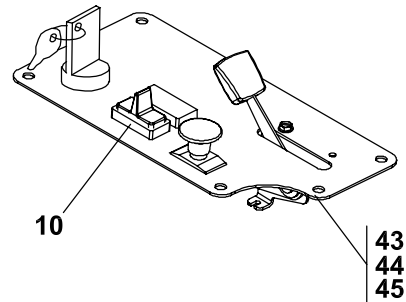
4. Place height of cut decal **31** on outboard height adjuster plate **2** and install to cradle as shown using (2) M10-1.50 X 25 bolts **28** and (2) M10-1.50 locknuts **24**. Leave these fasteners loose until Step 8.
5. Install outer deck lift plate **13** to rear lift shaft **12**, using (2) M12-1.75 X 90 bolts **26**, (2) spacers **4** and (2) M12-1.75 locknuts **27**. Tighten fasteners.
6. Install actuator **7** to actuator mounting bracket **9** using (1) clevis pin **18**, (2) washers **14** and (1) cotter pin **16**. Install other end of actuator to deck lift plate **13** using (1) clevis pin **17**, (2) washers **14**, (2) spacers **6** and (1) cotter pin **16**.
7. Install deck lift lever **1** to rear lift shaft **12** using (1) M16-2.0 X 50 bolt **22**, (1) washer **15**, (1) spacer **5**, (1) spring washer **34** and (1) M16-2.0 locknut **25**. Tighten fasteners.
8. Place height of cut decal **30** on inboard height adjuster plate **3** and install to height adjuster plate **2** using (1) M10-1.50 X 45 bolt **21**, (1) M10-1.50 X 55 bolt **19**, (2) spacers, height of cut pin and lanyard **L** (removed in Step 10, Page 2), (3) M10-1.5 locknuts **24**, and (1) cotter pin **16**. Tighten all fasteners on the height adjuster plates and make sure that all fasteners have been tightened.

9. Remove control panel and retain hardware for later use. On some models, remove one of the plugs in the control panel and install lift switch **10**. On models that are air cooled, liquid cooled or on the EC diesel, replace the control panel with the appropriate control panel from the parts list on Page 8, Items 43-45.

10. Plug harness **11** into main harness and switch **10**.

NOTE: Earlier models, do not have a 2 wire connector in the main harness. For those models, replace the main harness with the new wire harness, Item 42, Page 8.

11. Route lift harness through to lower right front of engine deck and connect to actuator. Re-install control panel using hardware retained in Step 9. Use (2) wire ties **35** on harness at locations **M**.

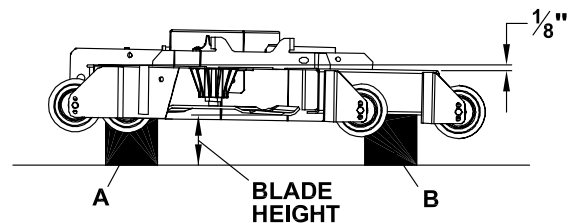


12. Lift front of machine up and roll machine forward over the mower deck.
13. Reconnect push arms removed in Step 4, Page 1.
14. Re-install adjusters and lift chains removed in Step 5, Page 1 and Step 12, Page 2. See illustration on Page 6. Install adjusters on front lift shaft if not originally equipped.
15. Level deck according to deck leveling instructions shown below.
16. Re-install PTO belt, foot plate, and close dump valves.

NOTE: Make sure all fasteners are tightened.

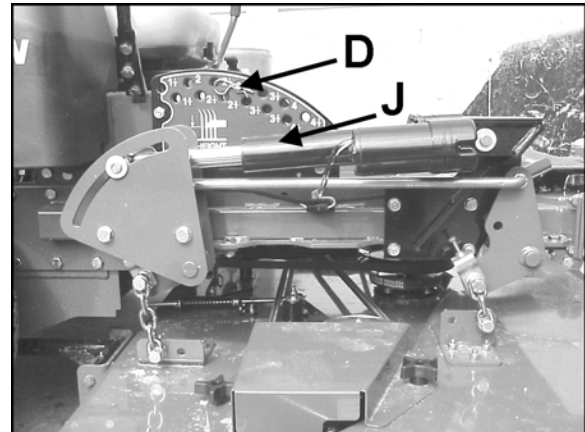
DECK LEVELING

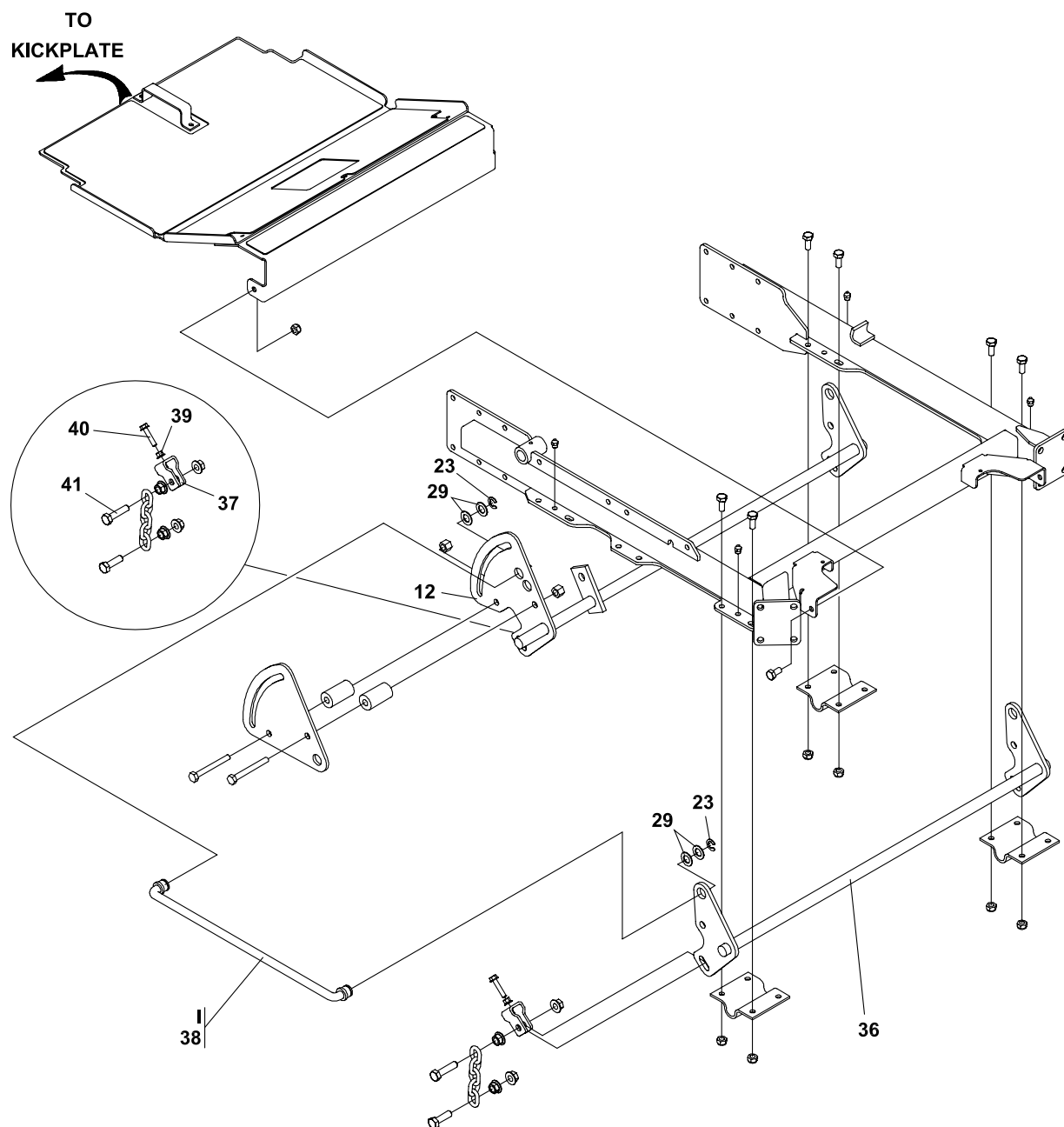
- a) Park the machine on a smooth, level surface. Raise the deck to the transport position. Remove pin **D**.
- b) Lower the deck onto a set of equal height blocks **A** under the rear corners of the deck. Place another set of blocks **B** under the front of the deck so that the deck top is pitched forward $\frac{1}{8}$ ". Continue running the actuator in the "DOWN" direction, so there is plenty of float for the actuator **E**.

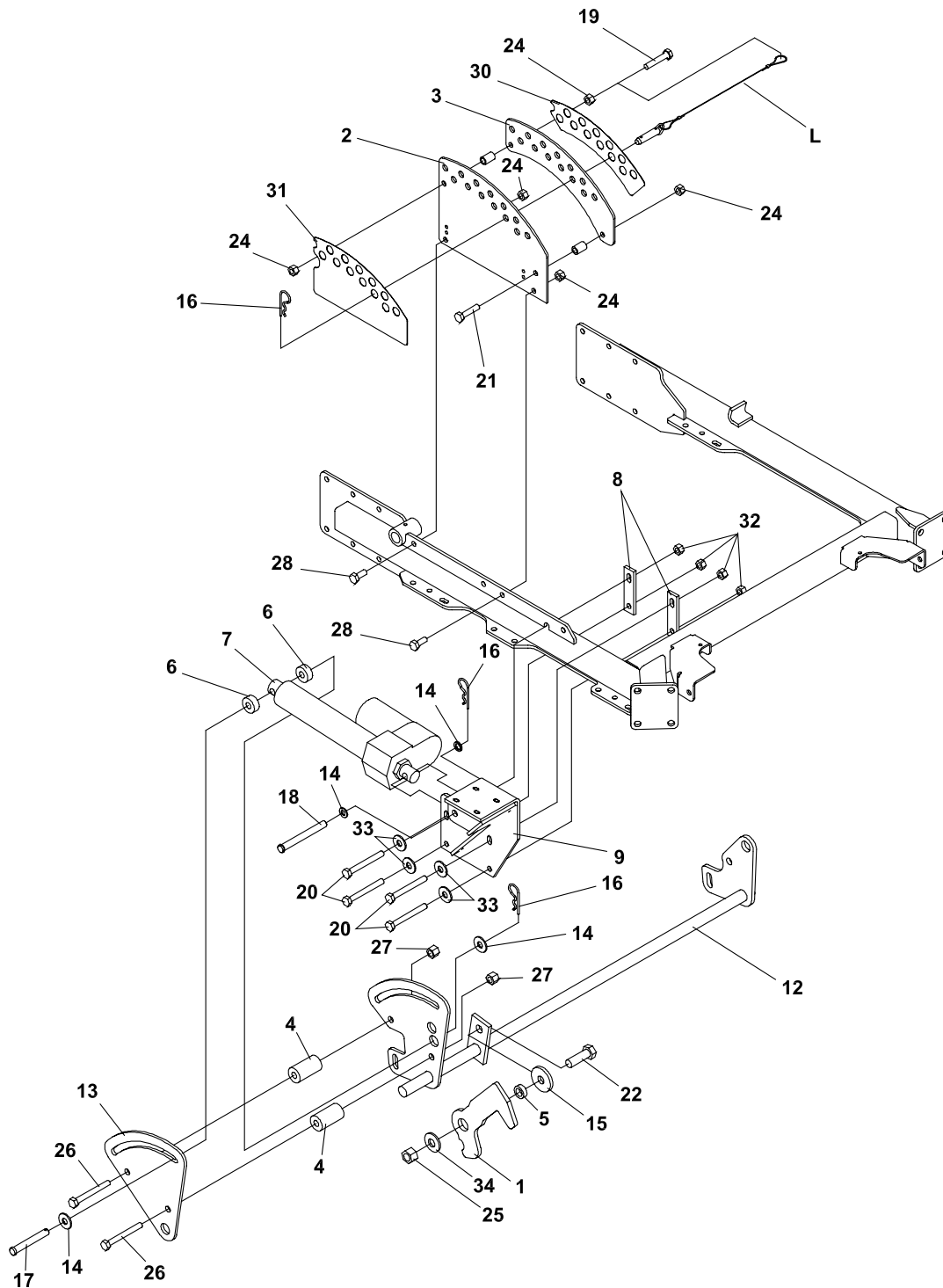


NOTE: The front and rear of the deck are at different heights.

- c) Measure the height of the blade cutting edge above the ground. Move actuator to install pin **D** in the hole corresponding to the blade height.
- d) Loosen the jam nuts on the height of cut clips and adjusting screws **C**. Turn the adjusting screws **C** until the play is taken out of the chains at all four corners. Tighten the jam nuts against the clips and at the adjusting screws.







I.S.-ELECTRIC DECK LIFT KIT (970309)**4133090 REV B****PARTS LIST KIT (970309)**

ITEM	PART NO.	DESCRIPTION	QTY
1	2182522.7	LVR-DKLFT ACTUATOR	1
2	2182523.7	PLATE-HT ADJ OUTBRD	1
3	2182524.7	PLATE-HT ADJ INBOARD	1
4	2183077	SPCR-DKLFT ACTUATOR	2
5	2183084	SPCR-16.25 X 25.4 X 8.5	1
6	2188227	SPACER	2
7	2720642	ACTUATOR-LINEAR	1
8	2721644.7	PLATE-BOLT	2
9	2721645.7	ACTUATOR MTG BRKT	1
10	2721814	SWITCH-DECK HEIGHT	1
11	* 2721903	HARNESS-CNTRL PNL	1
12	2722614.7	REAR LIFT SHAFT	1
13	4112962.7	PLATE-DK LFT OUTER	1
14	64163-19	WASHER-33/64X1-1/4X12	4
15	64163-78	WASHER-.635 X 2.00 X.25	1
16	64168-2	COTTER-HAIRPIN	4
17	64188-40	PIN, CLEVIS	1
18	64188-43	PIN, CLEVIS	1
19	64205-008	BLT-MET M10-1.50X55	1
20	64205-009	BLT-MET M10-1.5X65	4
21	64205-034	BLT-MET M10-1.50X45	1
22	64205-055	BLT-MET M16-2.0 X 50	1
23	64221-04	E-RING	4
24	64237-03	LOCKNUT	5
25	64237-04	LOCKNUT	1
26	64263-022	BLT-FLG M12-1.75 X 90	2
27	64265-06	LOCKNUT-M12-1.75	2
28	64205-080	BOLT-M10-1.50X25	2
29	64163-65	WASHER-.890X1.375X18	8
30	2000790	LBL-INSIDE HOC	1
31	2000791	LBL-OUTSIDE HOC	1
32	64265-05	LOCKNUT-M10-1.5	4
33	64251-004	WASHER-M10	4
34	64209-03	SPRING WASHER	1
35	* 65286-3A	CABLE TIE	3

PARTS LIST KIT (970312)

ITEM	PART NO.	DESCRIPTION	QTY
36	2722558.7	FRONT LIFT SHAFT	1
37	2722630	CLIP-DECK HEIGHT ADJ	4
38	4109960	WLDMT-DECK LIFT ROD	2
39	64141-2	NUT-WLF 1/4-20	4
40	64197-020	BLT-TDFM 1/4-20X1-1/2	4
41	64205-060	BLT-MET M12-1.75X50	4

ADDITIONAL PARTS LIST

42	* 2721375	HARNESS-WIRING MAIN	1
43	4133066	S-CTRL PNL W/LAB (AIR COOLED GAS)	1
44	4133071	S-CTRL PNL W/LAB (LIQUID COOLED GAS)	1
45	4133074	S-CTRL PNL W/LAB (EC DIESEL)	1

*** NOT ILLUSTRATED**