

INTRODUCTION: This instruction sheet covers the installation of the 42" Anti-scalp Roller Kit (970345) for the 42" Cutterdeck(s).

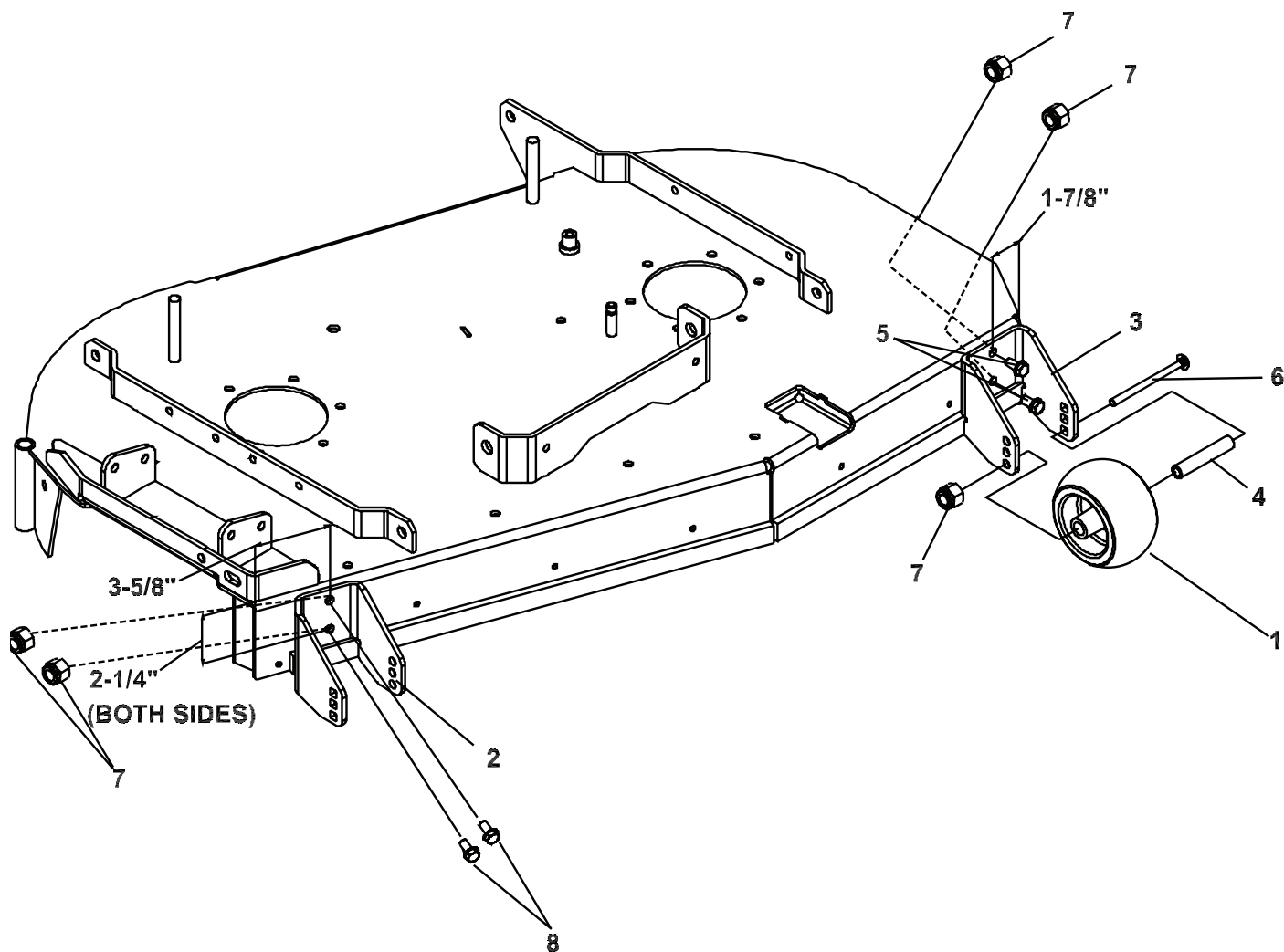
TOOLS REQUIRED

- Drill.
- 13/32" drill bit.
- Center punch.
- Tape measure or ruler.
- Blocks (for deck support).
- Ratchet with extension and 9/16" socket.

NOTE: All references below to the "right" or "left" are with respect to an operator at the controls.

NOTE: Park the machine on a smooth, level surface. Raise the deck to the transport position and remove the pin. Lower the deck onto a set of equal height blocks.

- 1) If your cutterdeck does not already have the lower holes, locate and drill 13/32" holes using the dimensions on page 2. If lower holes are existing, drill out the lower holes to 13/32". **NOTE:** You will have to drill through the baffle on RH side.
- 2) Install RH roller bracket **2** and LH roller bracket **3**, using (2) 3/8-16 nuts **7**, (1) 3/8-16 X 1" bolt **5** on LH side and (1) 3/8-16 X 1-3/4" bolt **8** on RH side in the bottom holes as shown on Page 2.
- 3) Be sure roller bracket **2** is square to the deck top and using the 13/32" drill bit, mark and drill a hole in the deck, using the roller bracket as a template. Repeat this procedure on roller bracket **3**.
- 4) Install (2) 3/8-16 nuts, (1) 3/8-16 X 1" bolt **5** on LH side and (1) 3/8-16 X 1-3/4" bolt **8** on RH side as shown on Page 2 and tighten at this time.
- 5) Assemble the (2) rollers **1** to the brackets previously installed using (2) 3/8-16 X 4-1/2" carriage bolts **4**, (2) spacers **4**, and (2) 3/8-16 locknuts **7** as shown on Page 2.
- 6) Tighten all fasteners at this time.



KIT PARTS LIST

ITEM	PART NO.	DESCRIPTION	QTY
1	2721512	ROLLER	2
2	4143255.7	BRKT-RLR FRT RH	1
3	4154040.7	BRKT-ANTI SCALP RLR	1
4	2720685	SPACER-ROLLER	2
5	64123-50	BLT-3/8-16 X 1	2
6	64018-30	BLT-CRG 3/8-16 X 4-1/2	2
7	64229-03	LOCKNUT-NYLON 3/8-16	6
8	64123-87	BLT-HX 3/8-16 X 1-3/4	2