

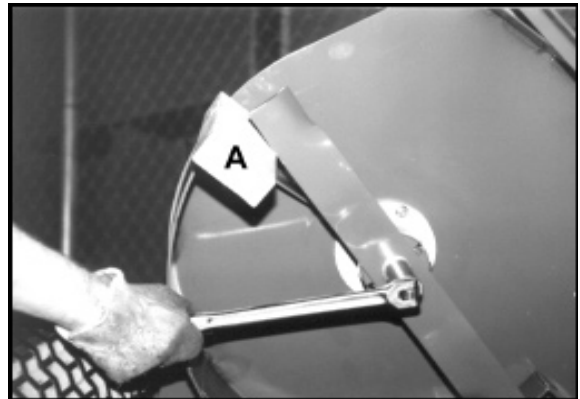
INTRODUCTION: This instruction sheet covers the installation of the 42" mulching kit (970348).

NOTE: Installation of this mulching kit requires that the cutterdeck be removed from the power unit.

1. Remove the cutterdeck from the power unit retaining all hardware for reassembly.

BLADE REMOVAL

2. Follow these instructions to remove all blades.
 - A. Loosen with a box wrench or a socket and long breaker bar. To gain additional leverage, slip a long pipe or thick-walled tube over breaker bar or wrench.
 - B. Insert wood block **A** as shown, with grain perpendicular to blade, to prevent blade from turning when loosening.
 - C. Wear thickly padded gloves. Keep hands clear of blade path. Blades may rotate when bolt releases.



3. Remove blowout baffles **1**, **2** and **3** if your deck **A** is so equipped. See **FIGURE A** for removal of these baffles. Retain baffles and hardware for conversion back to a side discharge deck.

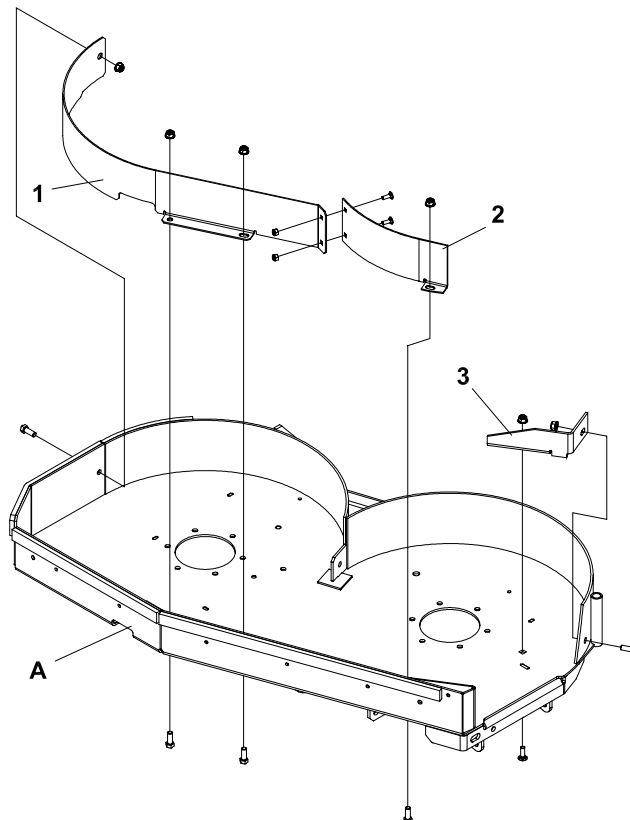
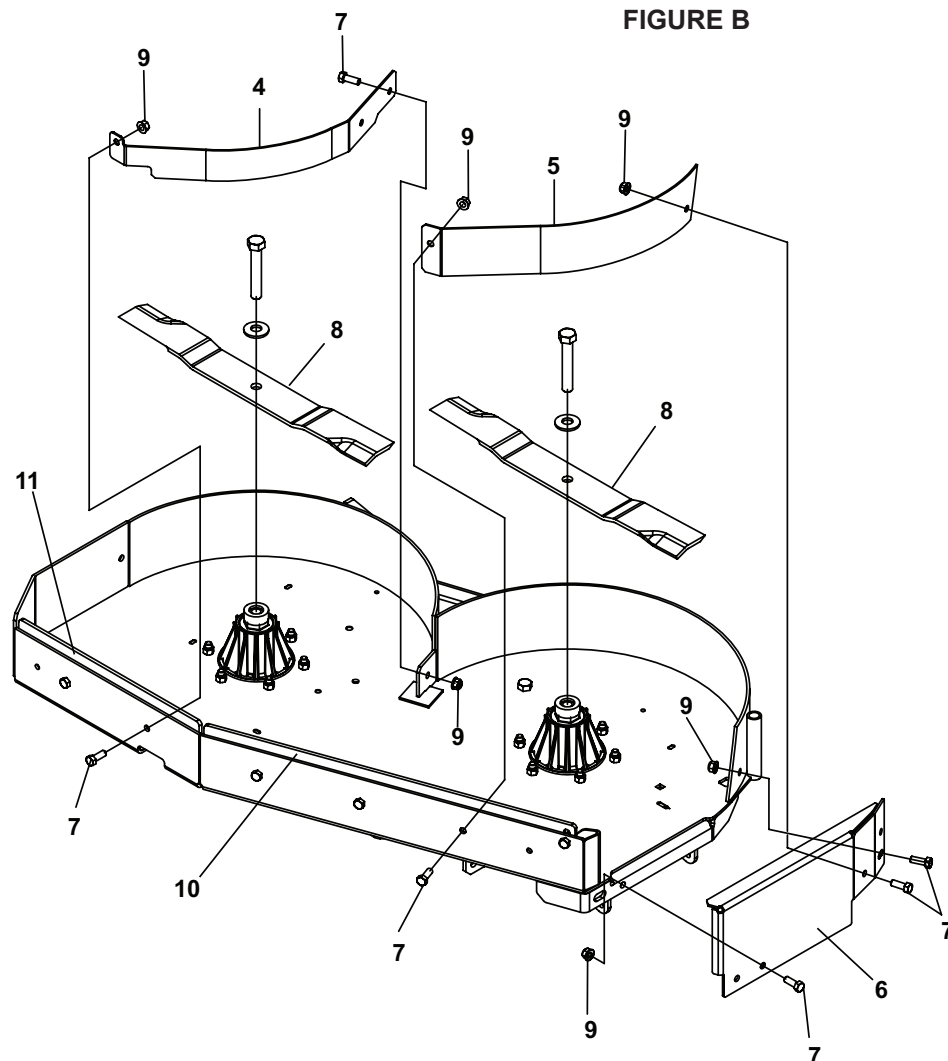


FIGURE A

MULCHING KIT INSTALLATION:

NOTE: See Figure B for mounting diagram. Kit parts list located on Page 3.

1. Install mulching end bracket **6** to holes in cutterdeck using (2) 3/8-16X1.0 bolts **7** and (2) 3/8-16 flanged nylon locknuts **9** as shown.
2. Install blowout baffle **4** to cutterdeck using (2) 3/8-16X1.0 bolts **7** and (2) 3/8-16 flanged nylon locknuts **9**.
3. Install right hand baffle **5** to cutterdeck And mulching bracket **6** (2) 3/8-16 X 1 bolts **7** and (2) 3/8-16 flanged nylon locknuts **9**.
4. Reinstall the previously removed blades or use the low lift blades **8** supplied in kit. Torque blade bolts to 70 ft-lbs. The blade that works the best will depend on grass type and conditions.
7. Reinstall cutterdeck to the power unit at this time.
8. Adjust items **10** and **11** so that they are nearest the ground for best results.



To convert back to side discharge refer to Page 1 **Figure A** for mounting diagram.
Kit 970348 Parts list located below.

1. Remove all blades.
2. If your deck previously had blowout baffles, remove all mulching baffles and end plate. Retain hardware and baffles for conversion back to mulching deck. Reinstall baffles using the previously removed hardware.
3. Install standard blades. Torque blade bolts to 70 ft-lbs.
4. Readjust leading edges if necessary.

KIT PARTS LIST

ITEM	PART NO.	DESCRIPTION	QTY
1	4150779.7	BAFFLE-FRONT LH (NOT INCLUDED IN KIT)	1
2	4150775.7	BAFFLE-FRONT CENTER (NOT INCLUDED IN KIT)	1
3	4115864.7	BAFFLE-DISCHARGE (NOT INCLUDED IN KIT)	1
4	4155763.7	BAFFLE-FRONT LH	1
5	4155764.7	BAFFLE-FRONT RH	1
6	2721336.7	BRKT-MULCHER END	1
7	64123-50	BOLT-HEX 3/8-16X1	6
8	112243-03	BLADE-21.00 OFFSET LLFT	2
9	64268-03	NUT-FL NYLOCK 3/8-16	6

ITEMS 10 AND 11 ARE NOT INCLUDED IN KIT

10	4163749.7	RH ADJ. LEADING EDGE
11	4163750.7	LH ADJ. LEADING EDGE

MULCHING DO'S AND DON'TS

- DO** wait for the grass to be dry or nearly dry.
- DO** reduce speed. This gives more blade hits to better reduce clipping size.
- DO** reduce or eliminate nitrogen fertilizer usage.
- a. Nitrogen makes grass grow faster in fast growth periods.
 - b. Fast growth makes it hard to keep up.
 - c. Mulching recycles plant nutrients so less fertilizer is required.
- DO** reverse pitch the cutterdeck. The idea is to cut grass into tiny pieces. A reverse pitch to the cutterdeck aids that. Raking the grass after cutting, with the back of the cutterdeck helps filter the pieces to the ground. A reverse pitch helps provide this raking action.
- DO** keep blades sharp.
- DON'T** take off more than one third of the grass height. Slower travel speeds and/or thin grass may allow this rule to be bent somewhat. During fast growth periods, grass height, not the calendar, has to set the cutting schedule.