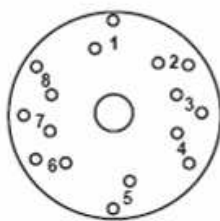


INTRODUCTION: This instruction sheet covers the installation of cut length for 1 meter on the Heavy Duty Sodcutter

Sod Length of Cut Chart						
Number and Position of dogs on Dog Wheel	Metering Wheel Segment Size				Roll Area	
	Standard PN 515534		1 Meter SQ PN 4163552			
	Inches	Meters	Inches	Meters	Square feet	Square Meters
1			98	2.5	10.9	1.0
1	72	1.8			8.0	0.7
1-5			49	1.2	5.4	0.5
1-5	36	0.9			4.0	0.4
1-4-6			32.7	0.8	3.6	0.3
1-3-5-7			24.5	0.6	2.7	0.3
1-4-6	24	0.6			2.7	0.2
1-3-5-7	18	0.5			2.0	0.2
1-2-4-5-6-8			16.3	0.4	1.8	0.2
1-2-4-5-6-8	12	0.3			1.3	0.1

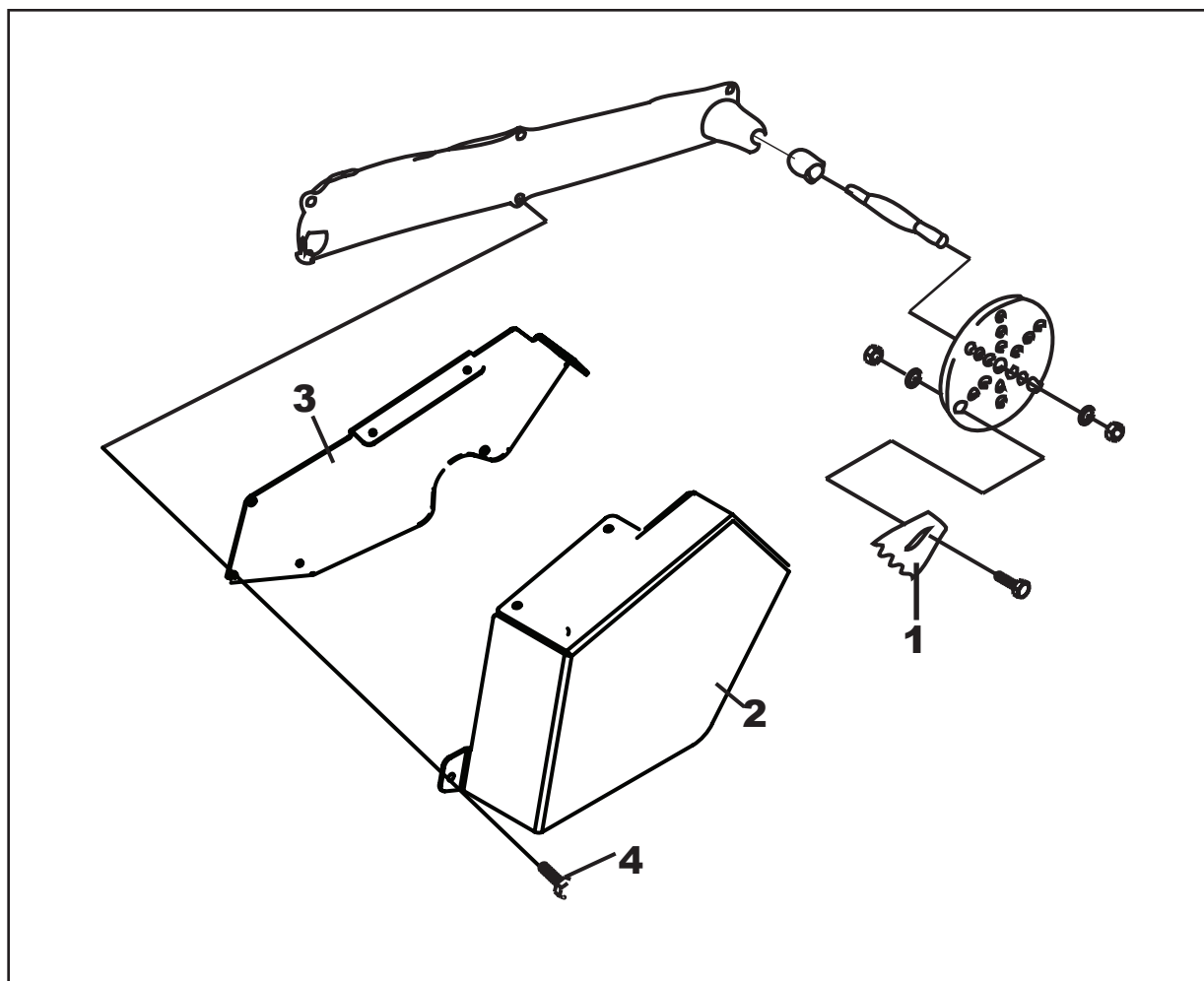


Wheel Positions

INSTALLATION INSTRUCTIONS:

1. Select desired length of cut from the Length of Cut Chart above.
2. Use the Chart to determine the appropriate metering wheel segment size and number of dogs and dog positions. Set up the unit with the metering wheel segment slot centered on the mounting bolts. Install the correct number of dogs at the positions indicated.
3. Operate unit until several cuts have been made.
4. Check for correct sod lengths. If fine adjustments need to be made, adjust the segments (Part No. 515534) on the metering wheel. Segments can be moved out to increase cut length, or moved in to decrease the length of cut. Be certain all segments are adjusted uniformly.

NOTE: The slot in the metering wheel segments allows adjustment of up to plus or minus 1" per ft (80 mm per meter) from the nominal setting.



SERVICE PARTS LIST			
ITEM	PART NO.	DESCRIPTION	QTY
1	4163552.7	SEGMENT, 1 METER	6
2	4164222.2	COVER-M SQ METER WHEEL	1
3	4164223.2	PLATE-BACK M SQ METER WHEEL	1
4	64152-56	SCREW-HS S-TAP #12 X 1/2	5