

INTRODUCTION: This instruction sheet covers the installation of the liquid cooled PTO idler kit for ZT200 liquid cooled units.

1. Cut out template 4164771 provided with kit.
2. Position the template inside the frame, aligning along the edges as shown in Figure 1 and Figure 2.
3. With the template in position, locate and center punch the drill location.
4. Remove the template and drill a 13/32" hole at the punch location.
5. Assemble the idler as shown in Figure 3.
6. Once assembled idler should appear as pictured in Figure 4.



FIGURE 1



FIGURE 2

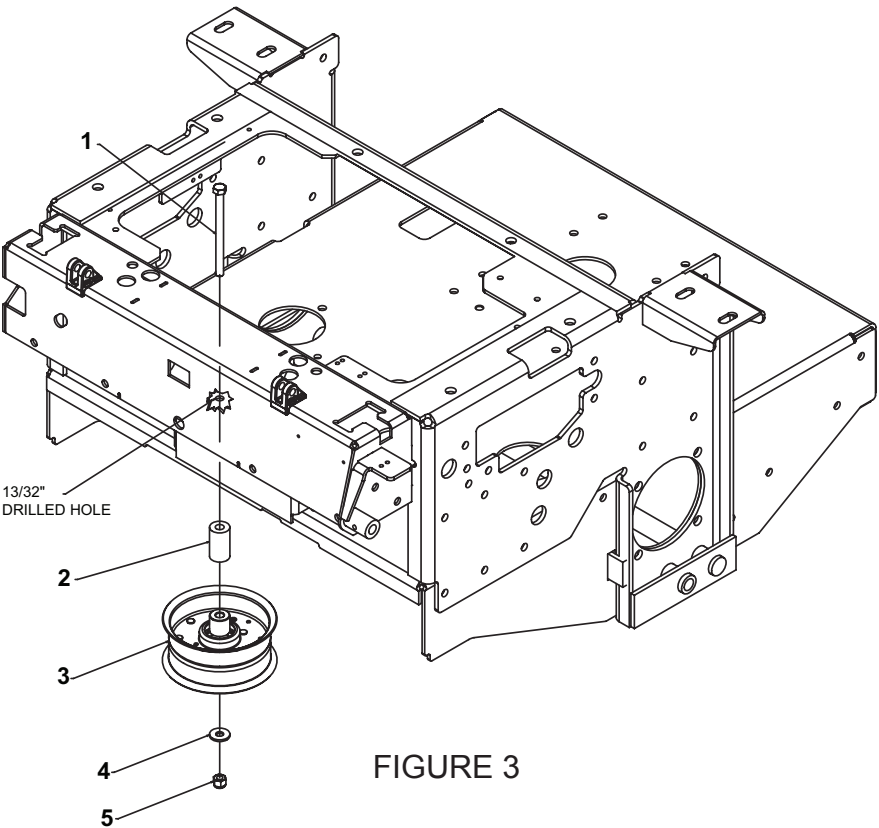


FIGURE 3

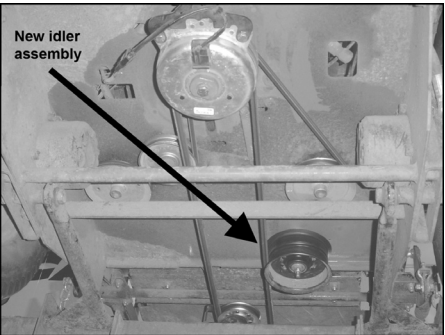


FIGURE 4

SERVICE PARTS LIST

ITEM	PART NO.	DESCRIPTION	QTY
1	64123-93	BLT-HEX 3/8-16 x 5	1
2	2721485-01	SPACER-IDLER	1
3	2721541	PULLEY-IDLER 5 IN.	1
4	64163-31	WASHER-25/64 X1X 12GA.	1
5	64229-03	NUT-NYLON LOCK 3/8-16	1
6	4164771	TEMPLATE-PTO IDLER KIT (NOT SHOWN)	1