

INTRODUCTION: This instruction sheet covers the installation of Rubber Chute Kit (970398) for Midsize cutterdecks with metal chutes.

1. Remove and discard metal chute **A** and retain hardware **B** for later use.

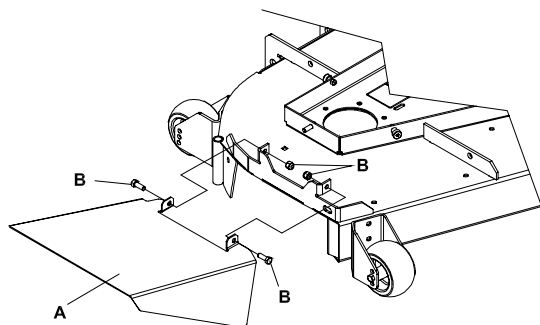


FIGURE 1

NOTE: If replacement parts are needed, refer to drawing and parts list.

2. Locate and drill a 0.281" hole as shown in Figure 2.

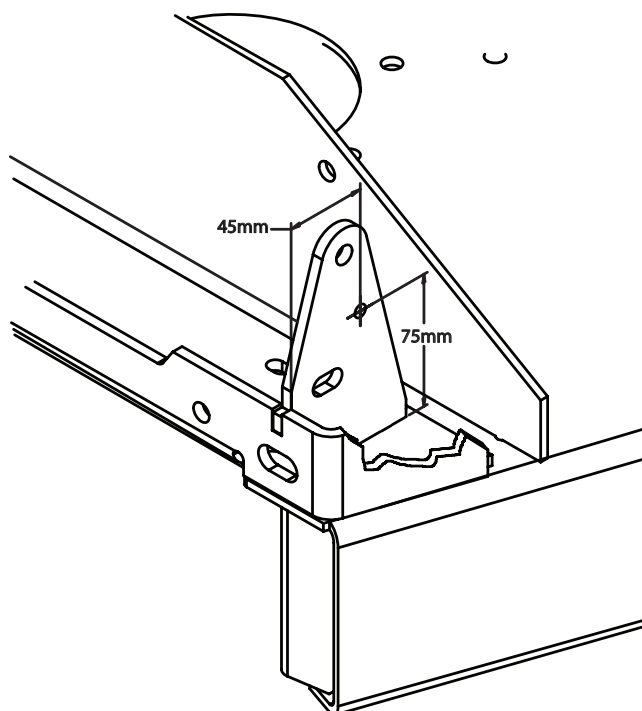


FIGURE 2

3. Attach chute assembly to cutterdeck using hardware from Step 1. Figure 3 Tighten so chute can be raised and lowered freely without any play in fasteners.
4. With chute in down position, assemble nut and bolt in drilled hole for chute stop. Figure 3

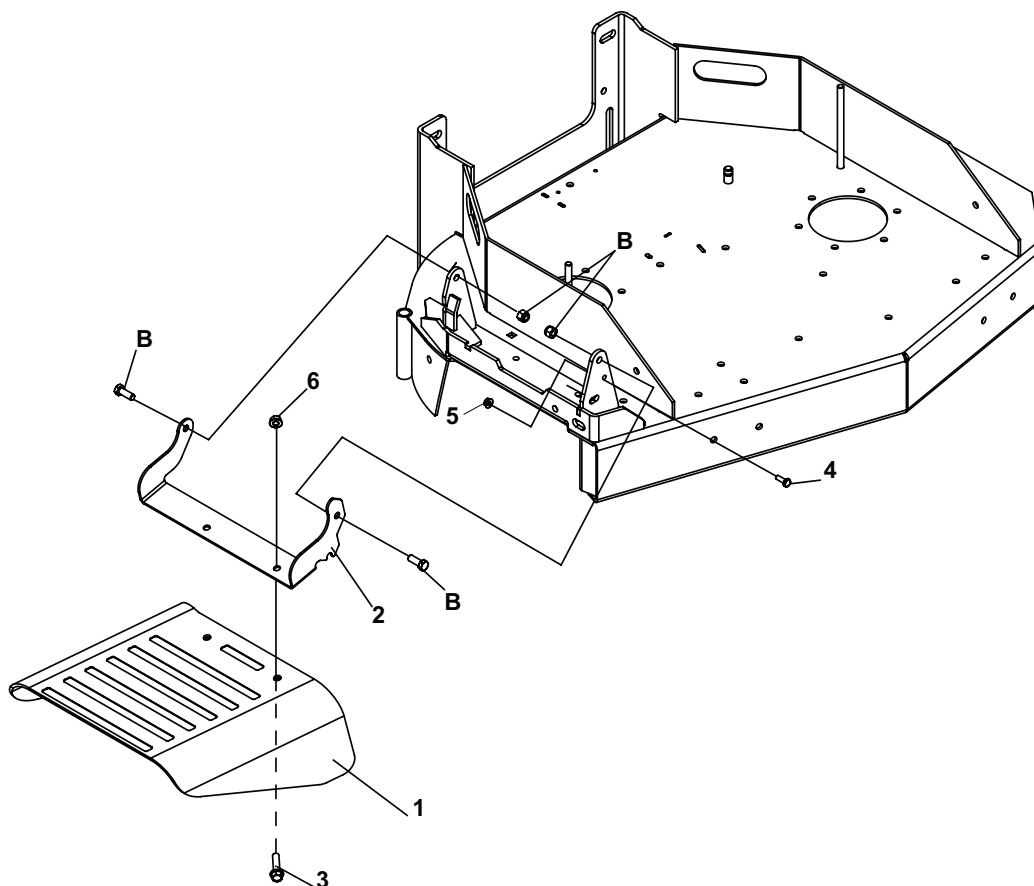


FIGURE 3

KIT PARTS LIST

ITEM	PART NO.	DESCRIPTION	QTY
1	4147115	CHUTE-RUBBER	1
2	4164932.7	BRCKT-CHUTE SUPPORT	1
3	64139-24	BLT-WLF 3/8-16 X 1	2
4	64123-89	BLT-HEX 1/4-20X3/4	1
5	64141-2	NUT-WLF 1/4-20	1
6	64268-03	BLT-HEX 3/8-16X1	2