

INTRODUCTION: This instruction sheet covers the installation of Rubber Chute Kit (970399) for Midsized EU cutterdecks with existing metal chutes.

1. Remove and discard metal chute **A** and retain hardware **B** for later use.

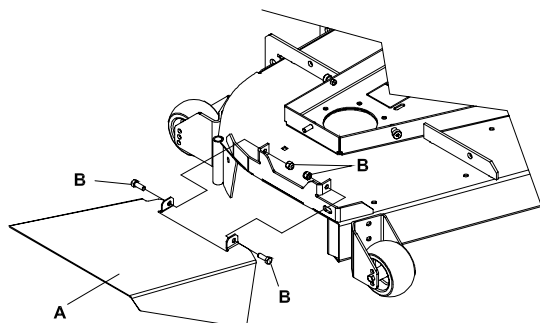


FIGURE 1

NOTE: If replacement parts are needed, refer to drawing and parts list.

2. Locate and drill a 0.281" hole as shown in Figure 2.

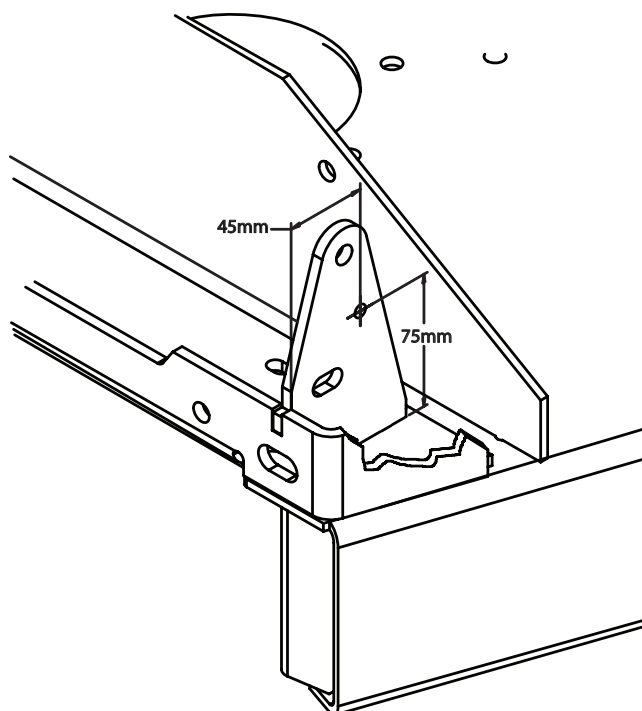


FIGURE 2

3. Attach chute assembly to cutterdeck using hardware from Step 1. Figure 3
4. Assemble nut and bolt in drilled hole for chute stop. Figure 3

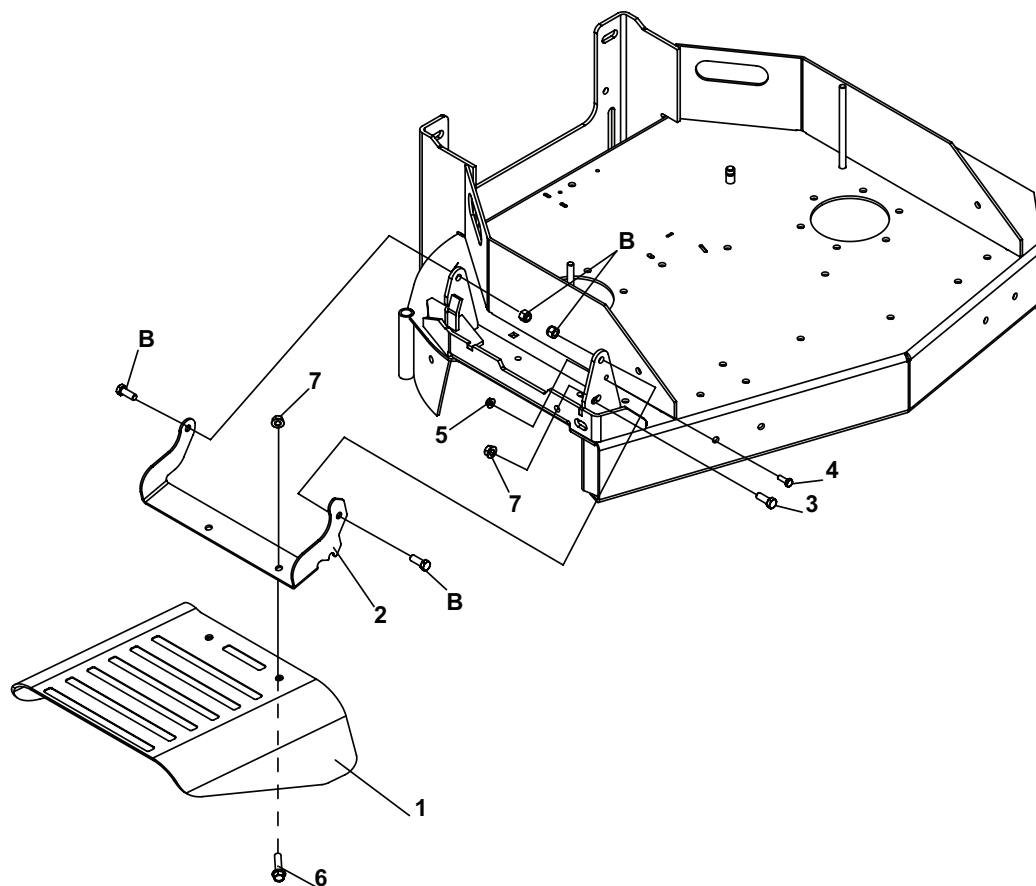


FIGURE 3

KIT PARTS LIST

ITEM	PART NO.	DESCRIPTION	QTY
1	4147115	CHUTE-RUBBER	1
2	4165130.7	BRCKT-CHUTE SUPPORT	1
3	64123-50	BLT-HEX 3/8-16X1	1
4	64123-89	BLT-HEX 1/4-20X3/4	1
5	64141-2	NUT-WLF 1/4-20	1
6	64139-24	BLT-WLF 3/8-16 X 1	2
7	64268-03	NUT-FL NYLON LOCK 3/8-16	3