

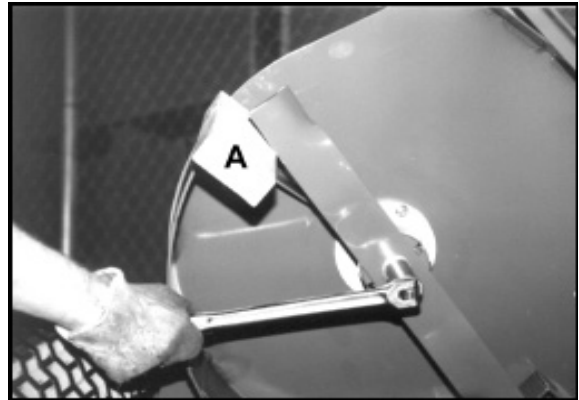
**INTRODUCTION:** This instruction sheet covers the installation of the 61" mulching kit (970409) to the Predator Pro and Procat ZT2 cutterdecks.

**NOTE:** Installation of this mulching kit requires that the cutterdeck be removed from the power unit.

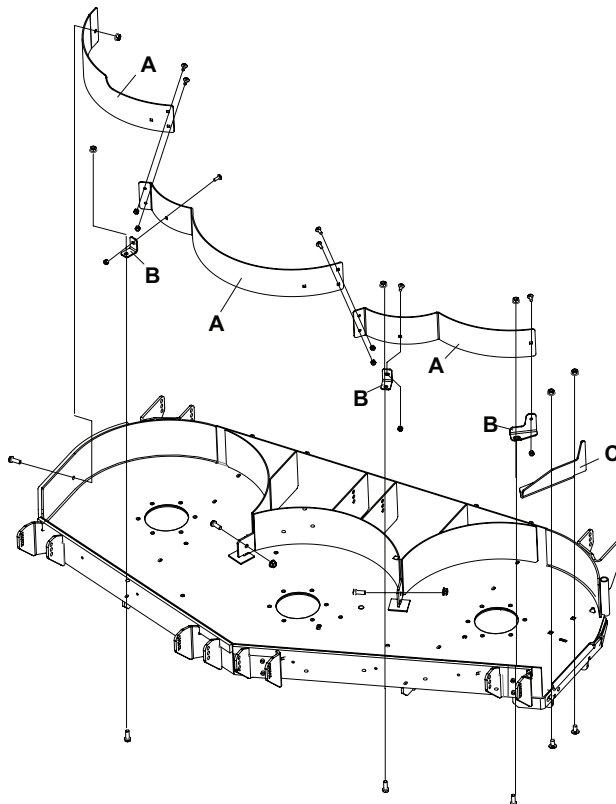
1. Remove the cutterdeck from the power unit retaining all hardware for reassembly.

### BLADE REMOVAL

2. Follow these instructions to remove all blades.
  - A. Loosen with a box wrench or a socket and long breaker bar. To gain additional leverage, slip a long pipe or thick-walled tube over breaker bar or wrench.
  - B. Insert wood block **A** as shown, with grain perpendicular to blade, to prevent blade from turning when loosening.
  - C. Wear thickly padded gloves. Keep hands clear of blade path. Blades may rotate when bolt releases.



3. Remove blowout baffles **A**, mounting brackets **B**, and discharge baffle **C**. See **FIGURE A** for removal of these baffles. Retain baffles and hardware for conversion back to a side discharge deck.



### MULCHING KIT INSTALLATION:

**NOTE:** See Page 3 **Figure B** for mounting diagram. Kit parts list located on Page 4.

1. Install blowout baffle **1** using (3) 3/8-16X1.0 bolts **7** and (3) 3/8-16 flanged nylon locknuts **11**.
2. Install mulch baffle bracket **14** to the interior baffle as shown using (1) 3/8-16X1.0 bolt **7** and (1) 3/8-16 flanged nylon locknut **11**.
3. Install mulch baffle bracket **14** to the left side blowout baffle **1** using (1) 3/8-16X1.0 bolt **7** and (1) 3/8-16 flanged nylon locknut **11**.
4. Attach center baffle **3** to mulch baffle bracket **14** using (1) 3/8-16X1.0 bolt **7** and (1) 3/8-16 flanged nylon locknut **11** as shown.
5. Attach center baffle **3** to left hand baffle **1** using (2) 1/4-20X3/4 carriage bolts **8** and (2) 1/4-20 nylon locknuts **12** as shown.
6. Install baffle mounting bracket **9** using (3) bushings **6**, (3) 3/8-16X4-1/4 bolts **10** and (3) 3/8-16 flanged nylon locknuts **11** as shown. Attach to center baffle **3** using (1) 3/8-16X1.0 bolt **7** and (1) 3/8-16 flanged nylon locknut **11**.
7. Attach right hand baffle **4** to center baffle **3** using (1) 3/8-16X1.0 bolt **7** and (1) 3/8-16 flanged nylon locknut **11**.
8. Attach right hand baffle **4** to baffle mounting bracket **9** using (1) 3/8-16X1.0 bolt **7** and (1) 3/8-16 flanged nylon locknut **11**.
9. Attach center baffle **3** to the interior baffle using (1) 3/8-16X1.0 bolt **7** and (1) 3/8-16 flanged nylon locknut **11** as shown.
10. Tilt discharge chute up. Attach mulching eco plate **5** in deck using (1') cotterpin **15** as shown.
11. Attach right hand baffle **4** to mulching eco plate **5** using (1) 3/8-16X1.0 bolt **7** and (1) 3/8-16 flanged nylon locknut **11** as shown.
12. Reinstall the previously removed blades or use the eliminator blades **13** supplied in kit. Torque blade bolts to 70 ft-lbs. The blade that works the best will depend on grass type and conditions.
13. Reinstall cutterdeck to the power unit at this time.

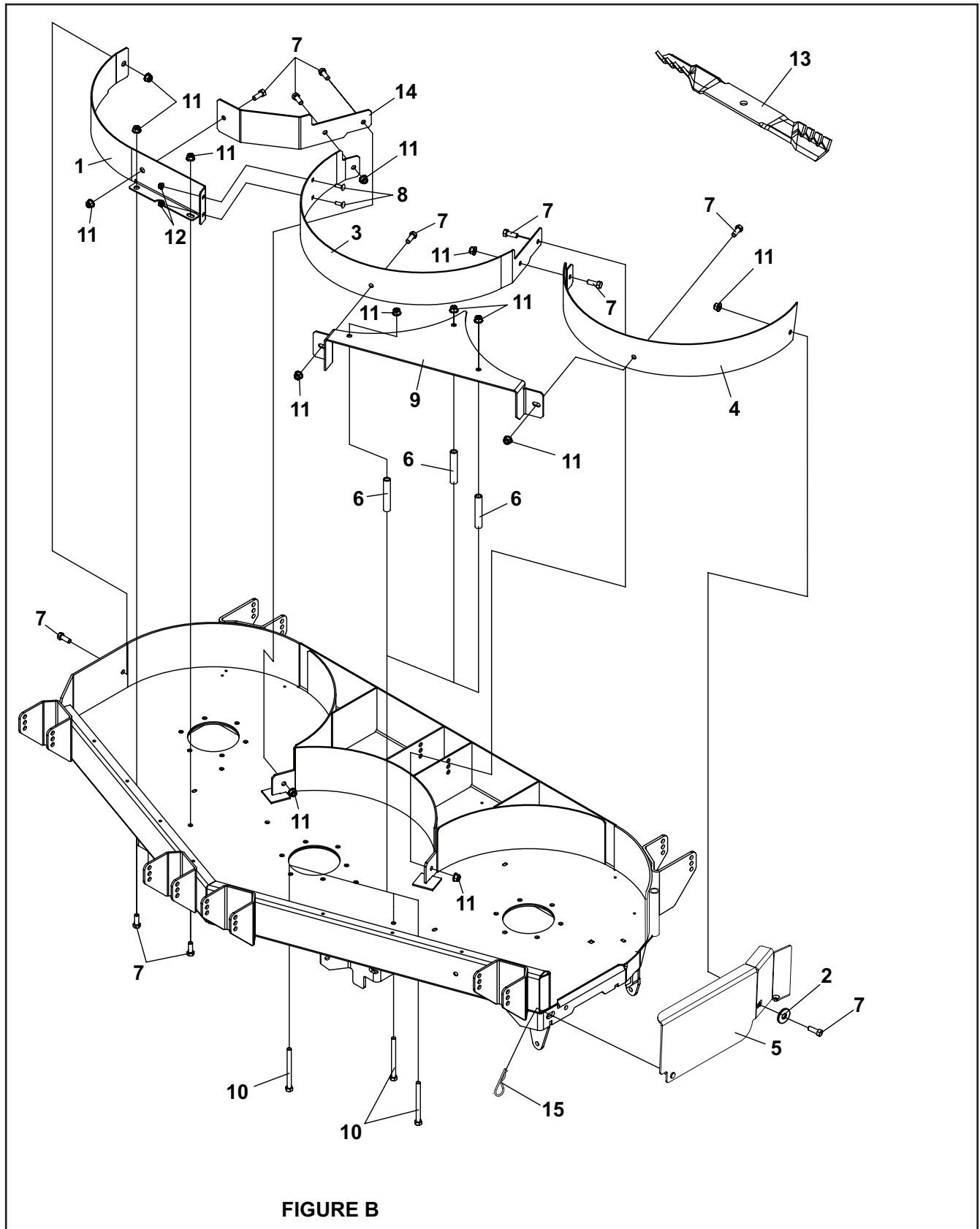


FIGURE B

## KIT PARTS LIST

ITEM	PART NO.	DESCRIPTION	QTY
1	4117663.7	BAFFLE-FRONT LH	1
2	64163-31	WSHR -25/64X1X12	1
3	4119684.7	BAFFLE-MULCH, CENTER	1
4	4119683.7	BAFFLE-MULCH, RH 61	1
5	4166347.7	BRKT-MULCHER END 61	1
6	2720685	SPACER-ROLLER	3
7	64123-50	BOLT-HEX 3/8-16X1	11
8	64018-2	BLT-CRG 1/4-20X3/4	2
9	4118028.7	BRKT-BAFFLE MOUNT 61	1
10	64123-217	BLT-HEX 3/8-16X4-1/4	3
11	64268-03	NUT-FL NYLOCK 3/8-16	14
12	64268-01	NUT-FL NYLOCK 1/4-20	2
13	2722543-03	BLADE-21.00 ELIM	3
14	4119682.7	BRKT-MULCH BAFFLE 61	1
15	64168-1	COTTER-HAIRPIN.12X2-3/8	1

## MULCHING DO'S AND DON'TS

**DO** wait for the grass to be dry or nearly dry.

**DO** reduce speed. This gives more blade hits to better reduce clipping size.

**DO** reduce or eliminate nitrogen fertilizer usage.

a. Nitrogen makes grass grow faster in fast growth periods.

b. Fast growth makes it hard to keep up.

c. Mulching recycles plant nutrients so less fertilizer is required.

**DO** reverse pitch the cutterdeck. The idea is to cut grass into tiny pieces. A reverse pitch to the cutterdeck aids that. Raking the grass after cutting, with the back of the cutterdeck helps filter the pieces to the ground. A reverse pitch helps provide this raking action.

**DO** keep blades sharp.

**DON'T** take off more than one third of the grass height. Slower travel speeds and/or thin grass may allow this rule to be bent somewhat. During fast growth periods, grass height, not the calendar, has to set the cutting schedule.