

**INTRODUCTION:** This instruction sheet covers the installation of the 52" mulching kit (970408) to the Predator Pro and Procat ZT2 52" Cutterdeck.

**NOTE:** Installation of this mulching kit requires that the cutterdeck be removed from the power unit.

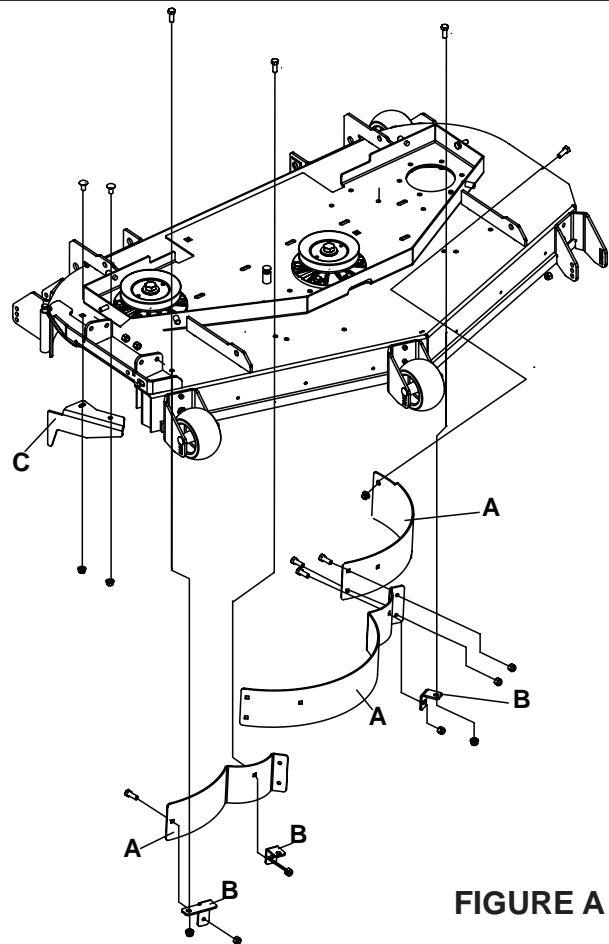
1. Remove the cutterdeck from the power unit retaining all hardware for reassembly.

### BLADE REMOVAL

2. Follow these instructions to remove all blades.
  - A. Loosen with a box wrench or a socket and long breaker bar. To gain additional leverage, slip a long pipe or thick-walled tube over breaker bar or wrench.
  - B. Insert wood block **A** as shown, with grain perpendicular to blade, to prevent blade from turning when loosening.
  - C. Wear thickly padded gloves. Keep hands clear of blade path. Blades may rotate when bolt releases.



3. Remove blowout baffles **A**, mounting brackets **B**, and discharge baffle **C**. See **FIGURE A** for removal of these baffles. Retain baffles and hardware for conversion back to a side discharge deck.

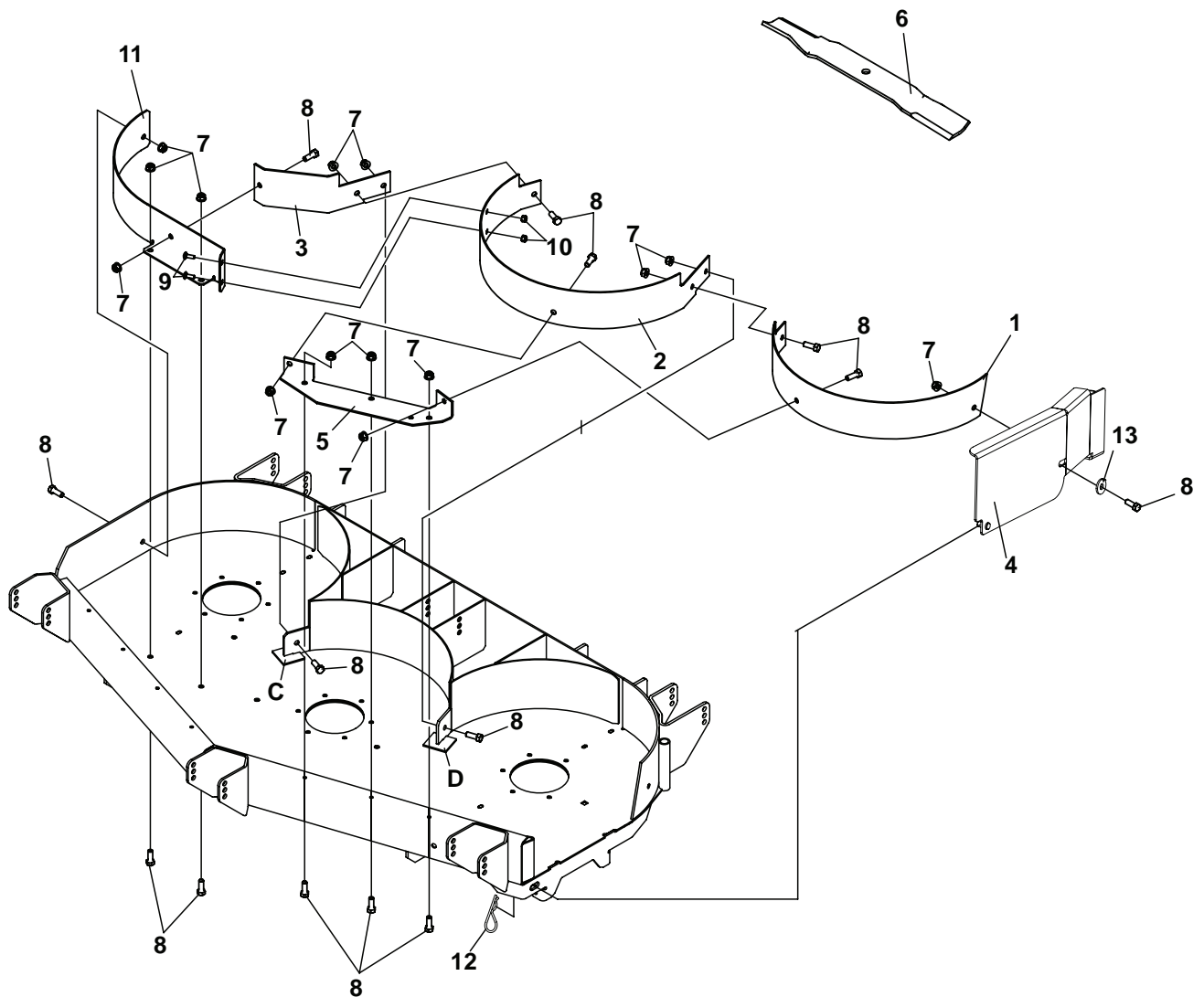


**FIGURE A**

**NOTE:** See Page 3 **Figure B** for mounting diagram. Kit parts list located on Page 4.

3. Install blowout baffle **11** using (3) 3/8-16X1 bolts **8** and (3) 3/8-16 flanged nylon locknuts **7**.
4. Install baffle connector **3** to left hand baffle **11** and deck bracket **C** as shown using (2) 3/8-16X1 bolts **8** and (2) 3/8-16 flanged nylon locknuts **7**.
5. Attach center baffle **2** to left hand baffle **11** using (2) 1/4-20X3/4 carriage bolts **9** and (2) 1/4-20 nylon locknuts **10** as shown.
6. Install mulch baffle bracket **5** to the inner deck top as shown, using (3) 3/8-16X1 bolts **8** and (3) 3/8-16 flanged nylon locknuts **7**.
7. Attach center mulch baffle **2** to mulch baffle bracket **5**, baffle connector **3** and deck bracket **D** as shown, using (3) 3/8-16X1 bolts **8** and (3) 3/8-16 flanged nylon locknuts **7**.
8. Attach right hand baffle **1** to center baffle **2** and mulch baffle bracket (2) **5**, using (2) 3/8-16X1 bolts **8** and 3/8-16 flanged nylon locknuts **7**.
9. Tilt discharge chute up and attach mulching eco plate **4** to discharge chute bracket as shown, using (1) cotterpin **12** as shown. Attach mulching eco plate **4** to right hand baffle **1** using (1) 3/8-16 bolt **8** (1) washer 25/64 x 1 X 12 **13** and (1) 3/8-16 flanged nylon locknut **7**.
10. Reinstall the previously removed blades or use the eliminator blades **6** supplied in kit. Torque blade bolts to 70 ft-lbs. The blade that works the best will depend on grass type and conditions. Reinstall cutterdeck to the power unit at this time.

FIGURE B



**KIT PARTS LIST**

ITEM	PART NO.	DESCRIPTION	QTY
1	4118701.7	BFL-MULCH 36/52/54 RH	1
2	4118995.7	BFL-MULCH 52/54 CNTR	1
3	4118996.7	BFL-MULCH 52/54 LH	1
4	4166350.7	PLATE-MULCH 32-54 DIS	1
5	4118706.7	BRKT-MULCH MTG FRT	1
6	2722543-02	BLADE-18.00 ELIMINATOR	3
7	64268-03	NUT-FL NYL LOCK 3/8-16	14
8	64123-50	BOLT-HEX 3/8-16X1	14
9	64018-2	BLT-CRG 1/4-20X3/4	2
10	64229-01	LOCKNUT-NYLON 1/4-20	2
11	4118427.7	BAFFLE-FRONT LH	1
12	64168-1	COTTER-HAIRPIN.12X2-3/8	1
13	64163-31	WSHR -25/64X1X12	1

**MULCHING DO'S AND DON'TS**

**DO** wait for the grass to be dry or nearly dry.

**DO** reduce speed. This gives more blade hits to better reduce clipping size.

**DO** reduce or eliminate nitrogen fertilizer usage.

a. Nitrogen makes grass grow faster in fast growth periods.

b. Fast growth makes it hard to keep up.

c. Mulching recycles plant nutrients so less fertilizer is required.

**DO** reverse pitch the cutterdeck. The idea is to cut grass into tiny pieces. A reverse pitch to the cutterdeck aids that. Raking the grass after cutting, with the back of the cutterdeck helps filter the pieces to the ground. A reverse pitch helps provide this raking action.

**DO** keep blades sharp.

**DON'T** take off more than one third of the grass height. Slower travel speeds and/or thin grass may allow this rule to be bent somewhat. During fast growth periods, grass height, not the calendar, has to set the cutting schedule.