

SETUP, PARTS & MAINTENANCE MANUAL 3 BAG CATCHER

MODELS:

970411 3 BAG CATCHER, 52"
970412 3 BAG CATCHER, 61"



WARNING: If incorrectly used this machine can cause severe injury. Those who use and maintain this machine should be trained in its proper use, warned of its dangers and should read the entire manual before attempting to set up, operate, adjust or service the machine.

4166627 REV C



SCHILLER GROUND
CARE

Contents

Section 1	1-1
Safety Information.	1-1
Torque Specifications	1-2
 Section 2	 2-1
3-Bag Catcher Assembly Illustration	2-2
3-Bag Catcher Assembly Parts List.	2-3
 Section 3	 3-1
Blower Assembly Illustration	3-2
Blower Assembly Parts List	3-3
 Section 4	 4-1
Catcher Mount Installation Illustration	4-2
Catcher Mount Installation Parts List & Installation Instructions	4-3
Optional Debris Guard Installation Instructions.	4-3
 Section 5	 5-1
Blower Installation Illustration	5-2
Blower Installation Parts List & Installation Instructions	5-3
 Section 6	 6-1
61" Deck Weight Installation Illustration.	6-2
61" Deck Weight Installation Parts List & Installation Instructions.	6-3
52" Deck Weight Installation Illustration.	6-2
52" Deck Weight Installation Parts List & Installation Instructions.	6-3

Section 1

Safety Information

NOTICE!!!

Unauthorized modifications may present extreme safety hazards to operators and bystanders and could also result in product damage.

The manufacturer strongly warns against, rejects, and disclaims any modifications, add-on accessories or product alterations that are not designed, developed, tested, and approved by the original equipment manufacturer. Any product that is altered, modified, or changed in any manner not specifically authorized after original manufacture including the addition of "after-market" accessories or component parts not specifically approved for use by the original equipment manufacturer will result in the product warranty being voided.

Any and all liability for personal injury and/or property damage caused by any unauthorized modifications, add-on accessories, or products not approved by the original equipment manufacturer will be considered the responsibility of the individual(s) or company designing and/or making such changes. This manufacturer will vigorously pursue full indemnification and costs from any party responsible for such unauthorized post-manufacture modifications and/or accessories should personal injury and/or property damage result.

OPERATING SAFELY

Do not operate the machine without either the discharge chute or the grass catcher fully installed.

Stop the engine, disengage the PTO and wait until the blades quit rotating before removing the grass catcher.

Stop the engine, disengage the PTO, and disconnect the spark plug wires or remove the key when stopping operation to clear blockages, unclog, inspect the attachment, or do maintenance or repair.

If the machine begins to vibrate abnormally or make abnormal sounds stop the engine, disengage the PTO, and disconnect the spark plug wires. Inspect the attachment and have necessary repairs performed by a qualified technician.

Use extra care with grass catchers. These attachments can change the stability of the machine as well as dynamically altering the stability during operation. Read and understand all operation and safety precautions associated with operating your machine on slopes and in other hazardous conditions. Do not attempt to exceed these recommendations with your grass collection system attached.

Only operate the catcher attachment with all guards and counter-balance weights fully installed.

Inspect grass catcher components regularly. If worn, damaged or deteriorated, they may expose moving parts or allow objects to be thrown.

Mow only in daylight.

Check operator presence interlock system and brake operation prior to each day's use. Adjust or repair any problems before using.

Clear the area to be mowed of objects such as rocks, toys, wire, or other debris that may be picked up or thrown by the catcher.

Be sure the area is clear of pets and people, especially young children. Never assume they will remain where you last saw them. Stop the machine if any enter the area.

Evaluate the terrain to determine if the machine can safely perform the job. Remember that slopes and irregular terrain may cause tires to lose traction resulting in loss of control. Use extreme caution on wet grass, as this will increase the risk.

Note: When ordering parts, you must use the part number as shown for each part, not the index number. Always give the model and serial number to your parts and/or service representative.

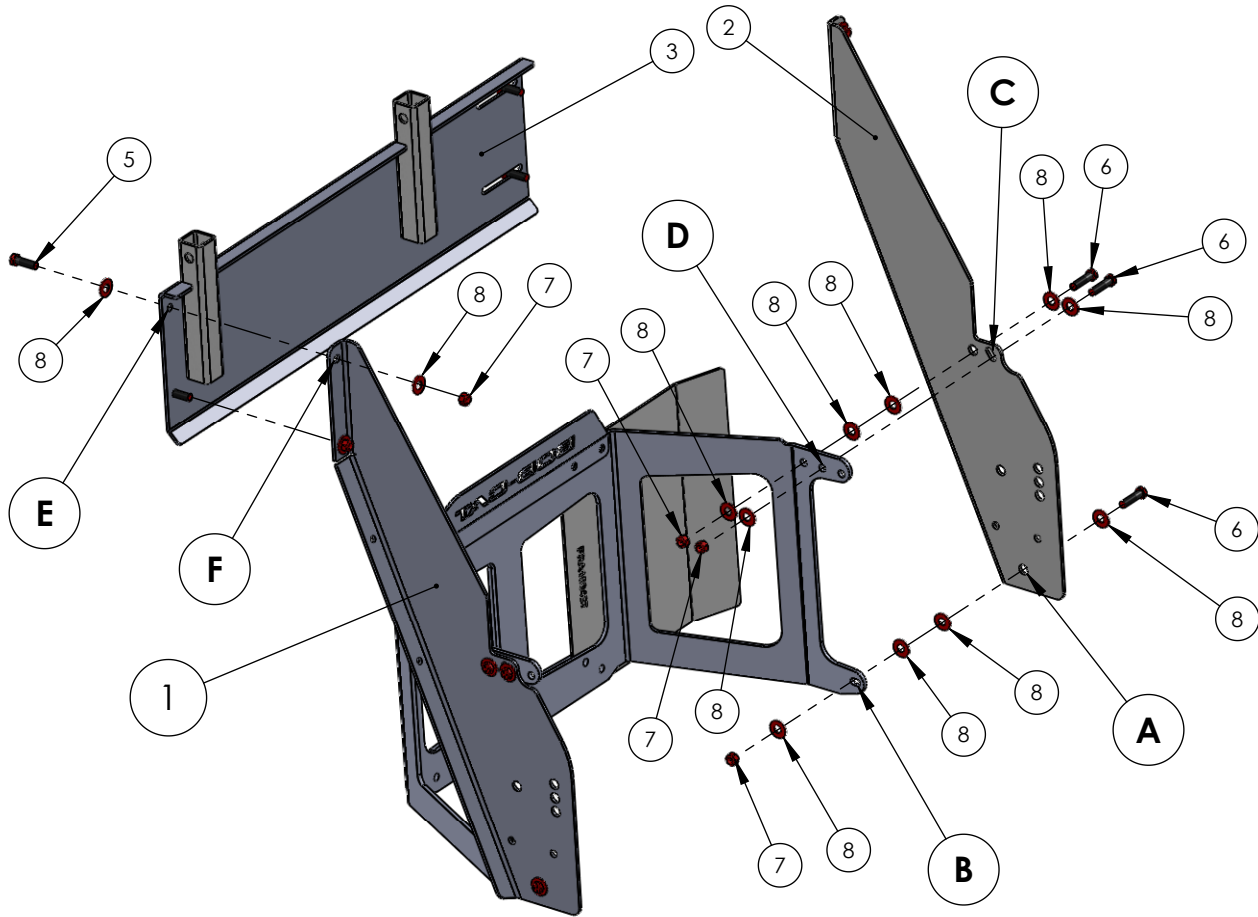
Illustrations used were current at the time of printing, but subsequent production changes may cause your catcher to vary slightly in detail. Humboldt Specialty Manufacturing Company reserves the right to redesign and change the catcher as deemed necessary, without notification. If a change has been made to your catcher which is not reflected in this parts manual, see your dealer for current information and parts.

Torque Specifications

The following chart lists the standard torque values for the threaded fasteners found in this manual. Torque all cap screws, nuts and set screws to these values unless a different torque is shown in the Notes section next to the fastener

<i>SIZE</i>	<i>FT-LBS</i>	<i>NM</i>
1/4"	8.2	11.1
5/16"	17	23
3/8"	30	40
1/2"	73	99
1"	625	850

LEG SET AND MOUNT PANEL INSTALLATION INSTRUCTIONS



LEG INSTALLATION

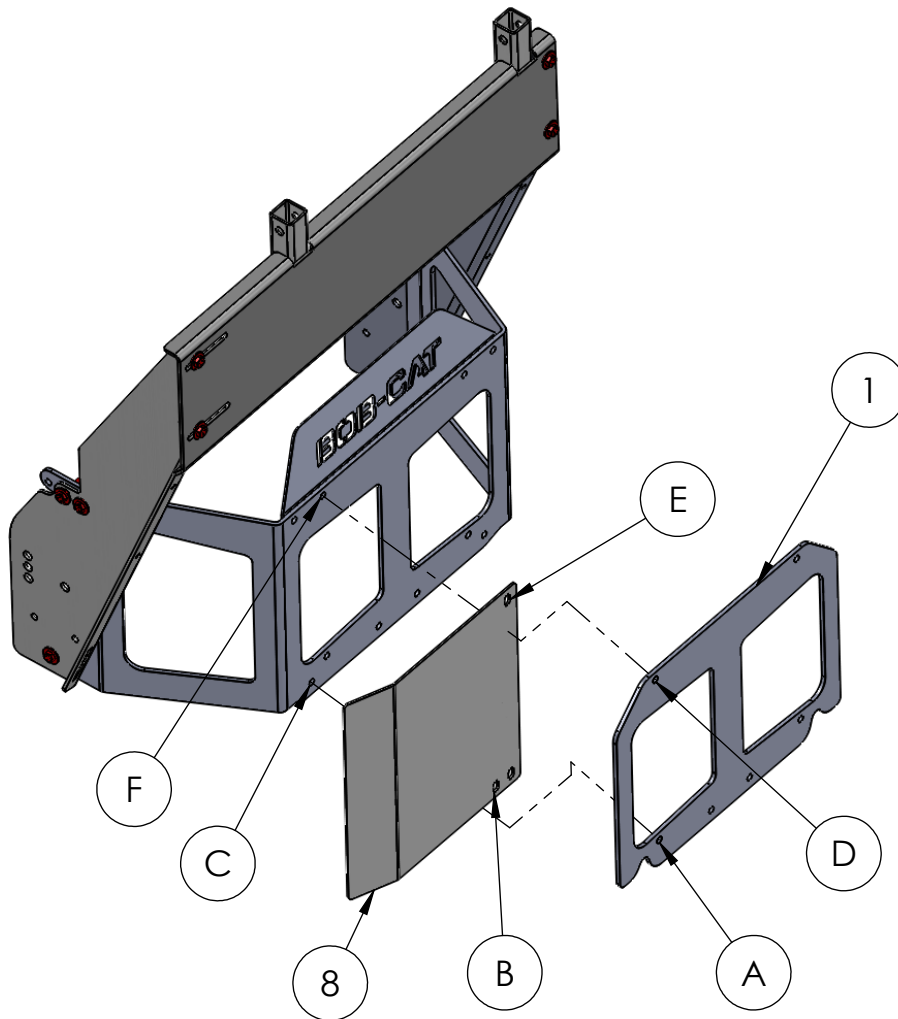
- Remove lower left motor guard hardware and save
- Using 3/8" hardware provided align the lower leg hole (A) with the motor guard hole (B) and secure, **DO NOT FULLY TIGHTEN**
- Remove the upper motor guard hardware and save
- Using the 3/8" hardware provided align the upper leg slot (C) with the motor guard hole (D) and secure, **DO NOT FULLY TIGHTEN**
- Repeat for discharge side

CATCHER MOUNT INSTALLATION

- Align hole (E) in the catcher mount panel to the hole (F) in the leg set, use the 3/8" hardware provided. **DO NOT FULLY TIGHTEN**
- Repeat for the lower hole on the same side of mount panel
- Using the 3/8" hardware provided align the upper slot on the mount panel with the upper hole on the trim side leg and secure, **DO NOT FULLY TIGHTEN**
- Repeat for lower slot.
- Square the legset and mount panel ensure that the panel is level and tighten all hardware.

ITEM NO.	SGC Part#	DESCRIPTION	QTY.
1	4137450	FORMED LEG, RIGHT	1
2	4137451	FORMED LEG, LEFT	1
3	4166634	3-BAG CATCHER SUPPORT	1
4	4164311	Bobcat 3 Bag Heat Shield	1
5	64123-16	CAP SCREW 3/8-16 x 1 1/4 Lg	4
6	64123-70	CAP SCREW 3/8-16 x 1.50	6
7	64229-03	3/8-16 Nylon Insert Nut	10
8	64163-31	3/8 Washer SAE	28

HEAT SHIELD INSTALLATION



HEAT SHIELD INSTALLATION

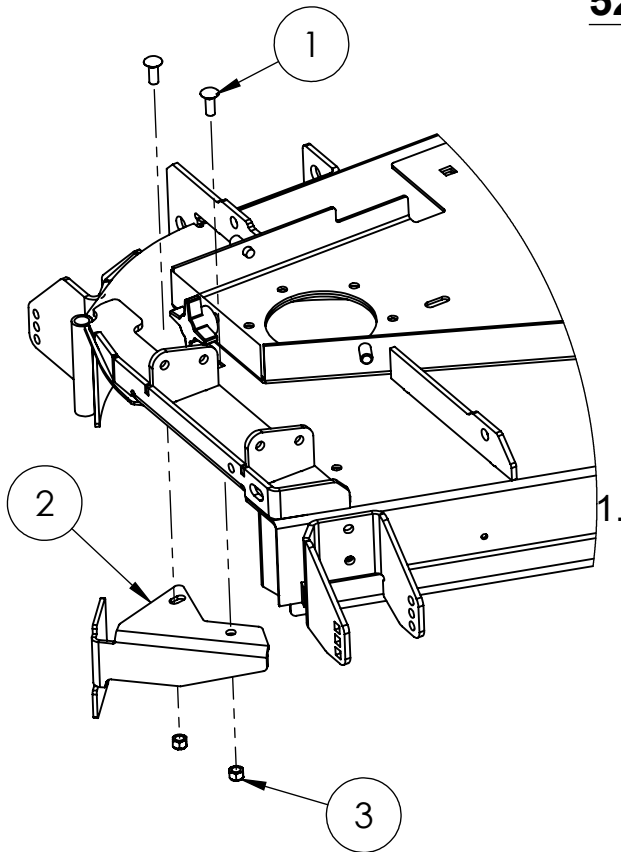
- Loosen all hardware holding the bumper brace (1) , remove left side hardware
- Align hole (A) (B) and (C) and re-install the hardware, DO NOT FULLY TIGHTEN
- Align hole (D) (E) (F) and re-install the hardware, DO NOT FULLY TIGHTEN
- Ensure that there are no restrictions to the flow of the exhaust and that the exhaust is directed away from the engine and bagger
- Tighten all hardware to the motor guard and heat shield

CAUTION:

EXHAUST GASSES ARE EXTREMELY HOT AND CREATE HEAT ON THE SURFACE OF THE HEAT SHIELD. THE HEAT SHIELD IS TO PROTECT THE BAGS FROM DIRECT CONTACT WITH THE EXHAUST STREAM.

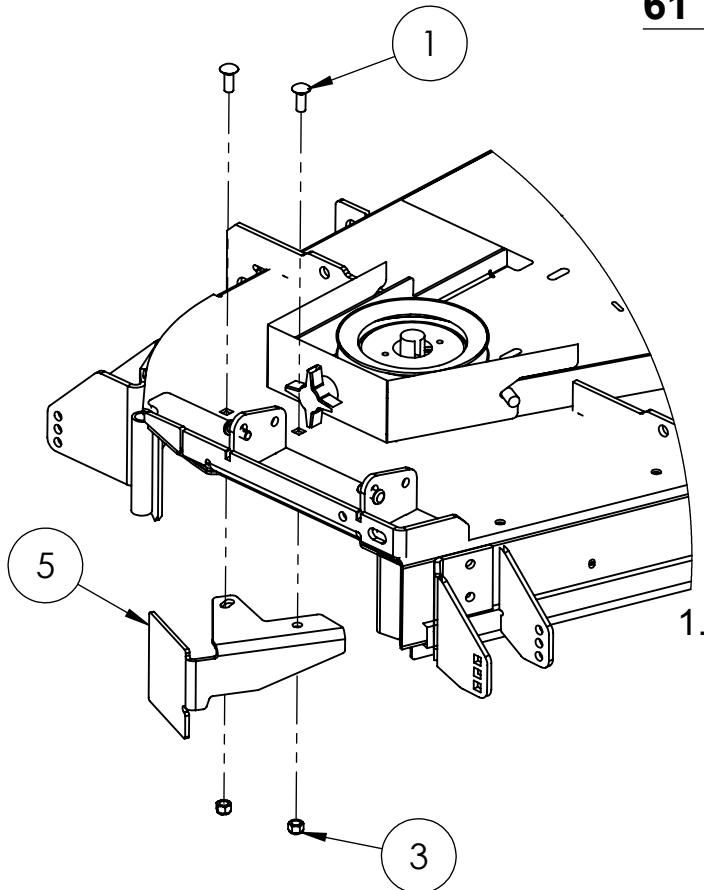
Deck Baffle Installation Instructions:

52" Deck



1. Remove existing Discharge Chute
2. Position Deck Baffle (2) as shown.
3. Install existing Carriage Bolt (1) thru deck and Deck Bracket (2) .
4. Secure with Existing Locknut (3) .

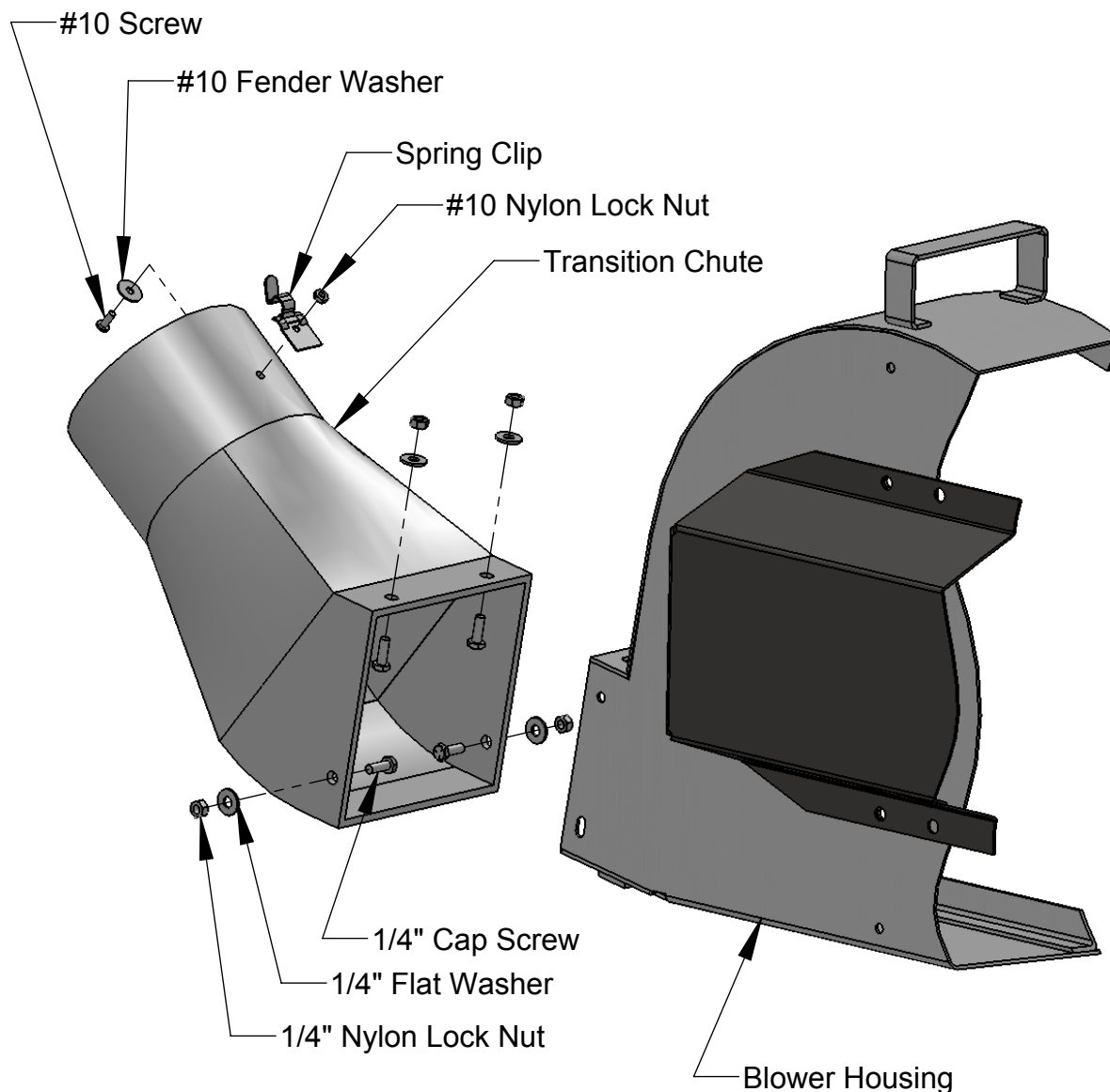
61" Deck



1. Remove existing Discharge Chute
2. Position Deck Baffle (5) as shown.
3. Install existing Carriage Bolt (1) thru deck and Deck Bracket (5) .
4. Secure with Existing Locknut (3) .

!!!INSTALL PRIOR TO INSTALLING BLOWER ON DECK!!!

Transition Chute Installation Instructions:

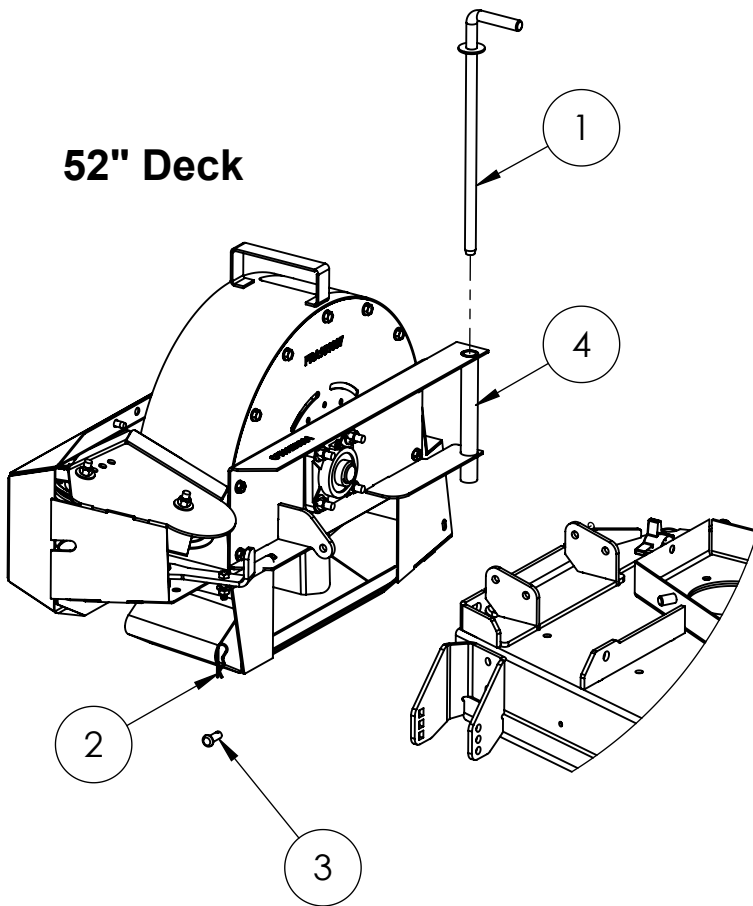


Installation Instructions:

1. Position square opening of Transition Chute over square opening of Blower
2. Install 1/4" Cap Screw with head to inside thru blower and Transition Chute.
3. Secure loosely with Flat Washer and 1/4" Nylon Lock Nut.
4. Repeat procedure for remaining 3 Cap Screws, Flat Washers and Nuts.
5. Tighten all hardware at this time.

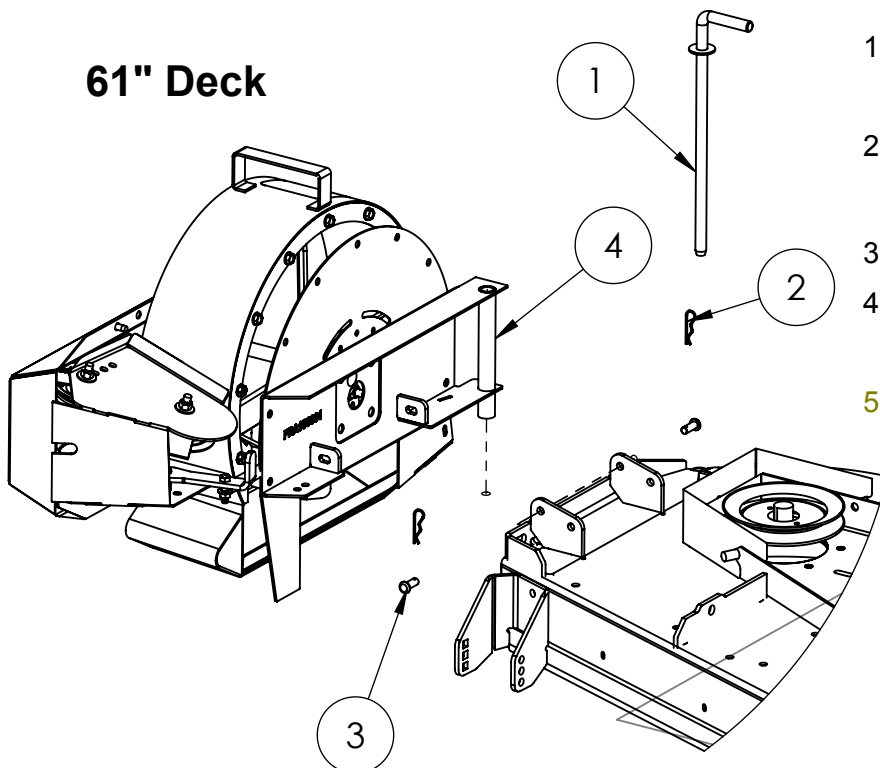
Blower Installation Instructions 52" & 61" Decks

52" Deck



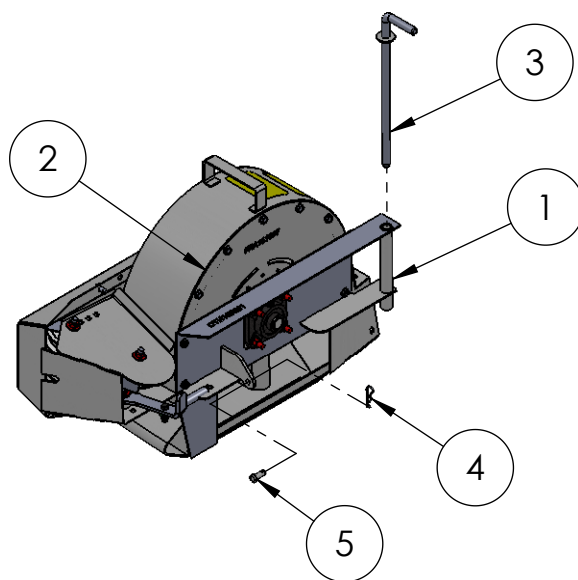
1. Position Blower Mount Tube (4) over tube on rear side of deck.
2. Install 'L' Pin (1) thru Blower Mount and tube on deck.
3. Swing blower parallel to deck.
4. Insert ClevisPin (3) thru Blower Mount and deck bracket.
5. Secure Clevis pin with hairpin (2)

61" Deck



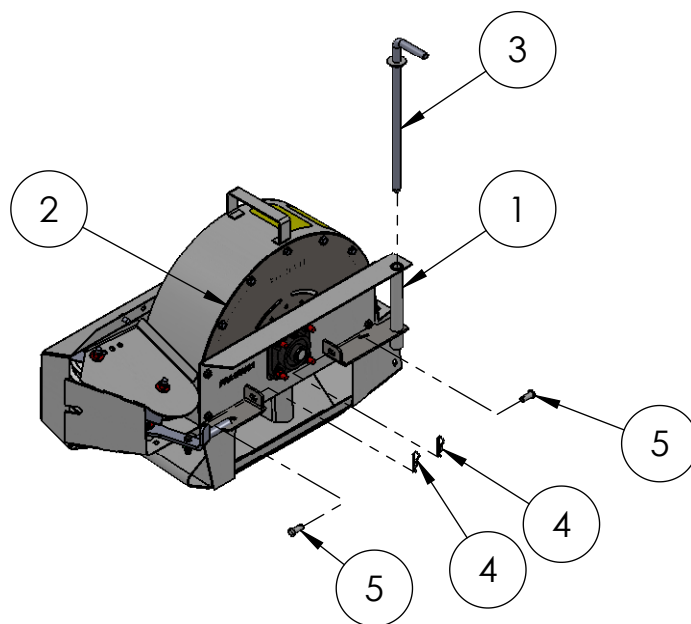
1. Position Blower Mount Tube (4) over tube on rear side of deck.
2. Install 'L' Pin (1) thru Blower Mount and tube on deck.
3. Swing blower parallel to deck.
4. Insert ClevisPin (3) thru Blower Mount and deck bracket (2 places).
5. Secure Clevis Pin with hairpin (2)

Blower Installation Parts List 52" & 61" Decks



52" Decks

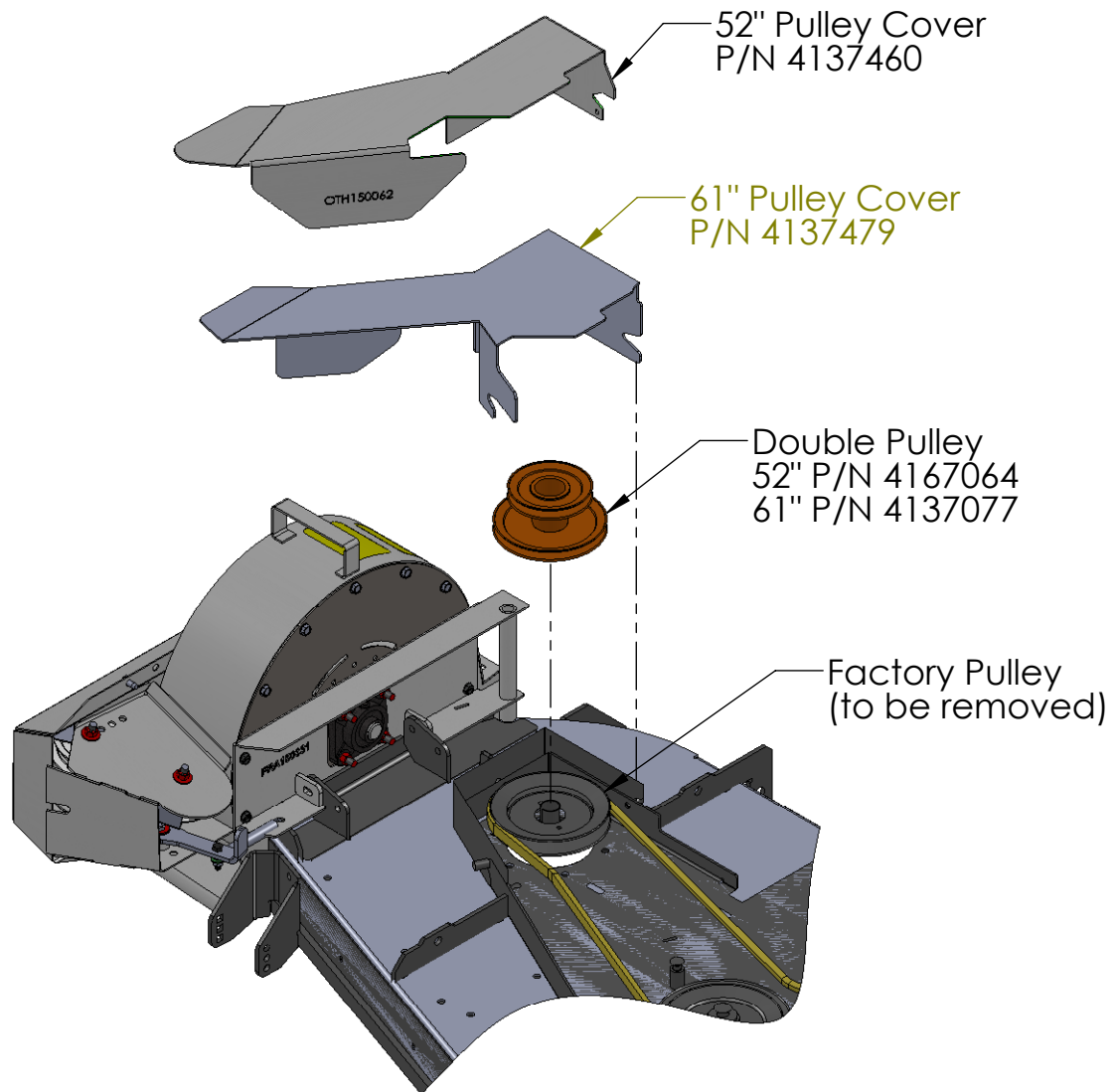
ITEM NO.	SGC Part#	DESCRIPTION	QTY.
1	4137036	BLOWER MOUNT 52" deck	1
2	4137083	BLOWER COVER PLATE	1
3	4137085	BLOWER MOUNT PIN	1
4	4139402	HAIR PIN, 0.091 x 1.875	1
5	4139405	CLEVIS PIN .375 X .75	1



61" Decks

ITEM NO.	SGC PART#	DESCRIPTION	QTY.
1	4137084	18" Blower Mount 42/61	1
2	4137083	BLOWER COVER PLATE	1
3	4137085	BLOWER MOUNT PIN	1
4	4139402	HAIR PIN, 0.091 x 1.875	2
5	4139405	CLEVIS PIN .375 X .75	2

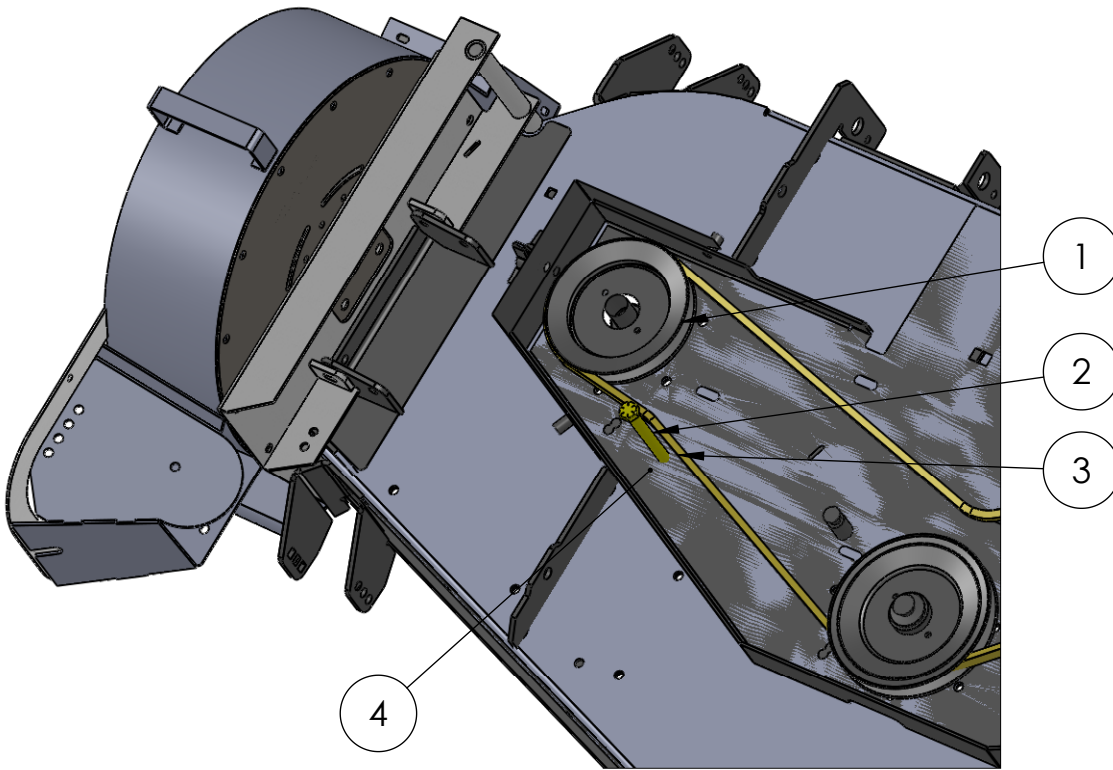
52" / 61" PULLEY/PULLEY COVER INSTALLATION



Pulley/Pulley Cover Installation

- Remove the factory pulley cover and set aside, the factory hardware will be reused to install the new pulley cover.
- Remove the tension from the spindle drive belt.
- Remove the Spindle Nut from the discharge side spindle.
- Remove the stock pulley and set aside.
- Replace the stock pulley with the included double pulley securing with the original hardware (torque the nut to 70 ft/lbs).
- Reinstall/tighten the factory belt around the lower pulley on the double pulley. (see belt guide adjustment page)
- Install the blower drive belt onto the upper pulley of the double pulley as previously described.
- Install the included pulley cover over the pulley as shown and secure using the factory hardware.

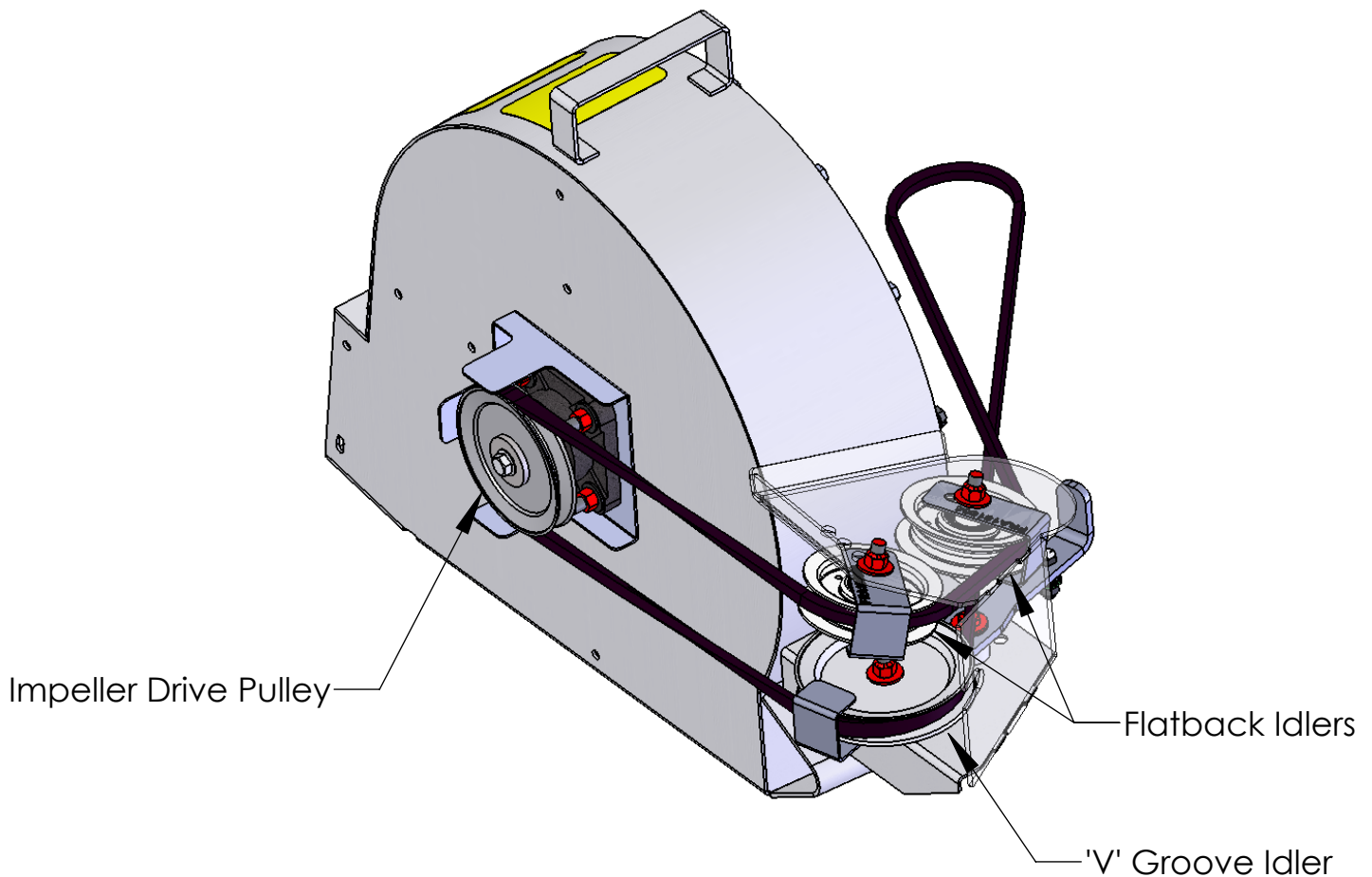
BELT GUIDE ADJUSTMENT



In some units it is necessary to move the belt guide bolt to allow for clearance for the belt once the new double pulley has been installed

- With the double pulley installed in place of the factory pulley (1) check the belt for clearance to the belt guide bolt (2)
- If the belt is rubbing on the factory installed bolt you must move it to the next available hole position (4) on 61" decks.

18" Blower Belt Routing and Replacement Instructions



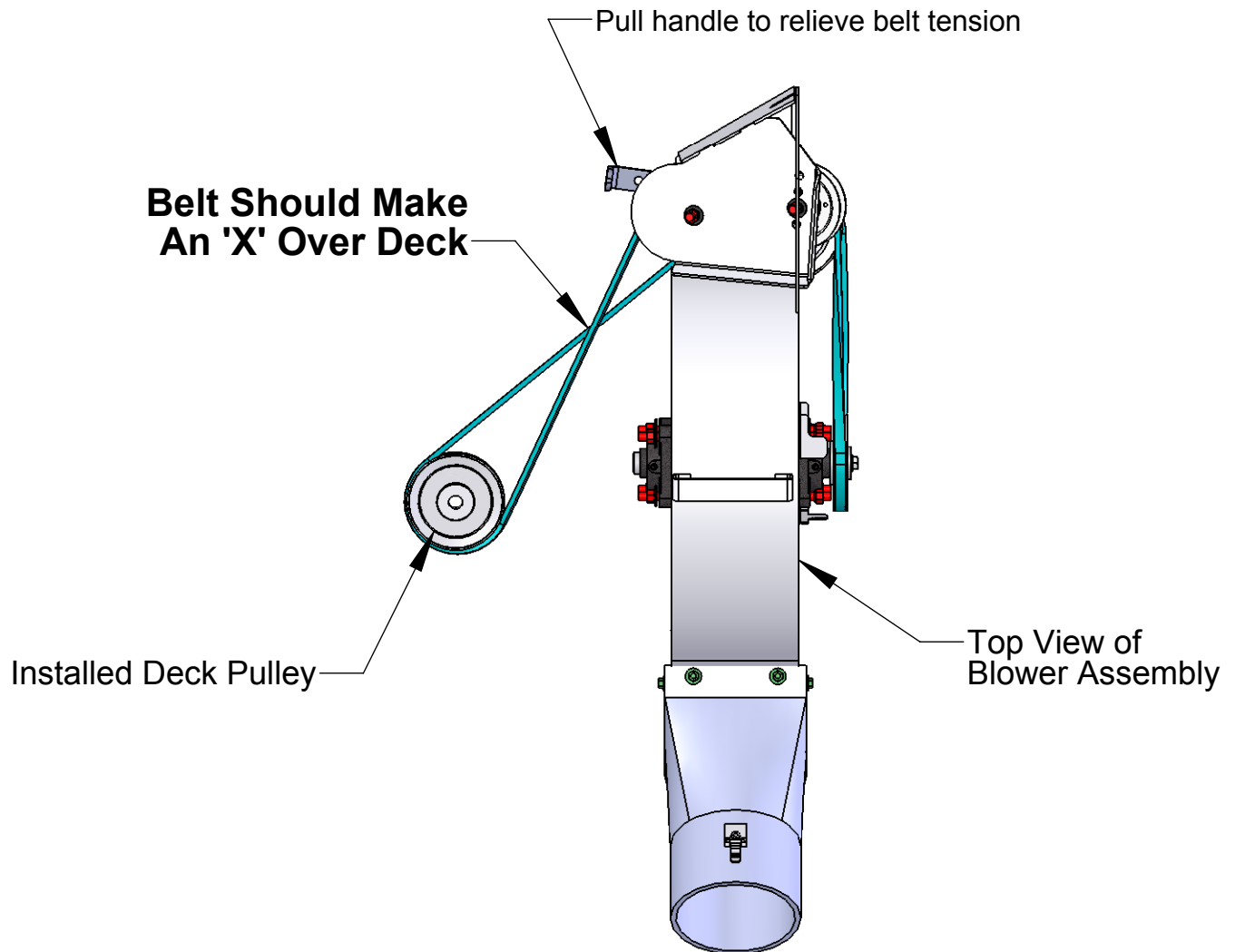
Belt Removal:

1. Remove four Blower Pulley Cover Screws.
2. Remove Blower Pulley Cover.
3. Loosen Flatback Idler Bolts, no need to remove completely.
4. Loosen 'V' Groove Idler Bolt, no need to remove completely.
5. Remove Belt from under Belt Guide on Impeller Drive Pulley.
6. Remove Belt from Flatback Idlers.
7. Remove Belt from the V Groove Pulley.
8. Pull belt from Blower Assembly.

Belt Replacement:

1. Install Belt under Belt Guide on the Impeller Drive Pulley.
2. Feed remainder of belt between Top Idlers and Bottom Idler and out of opposite side of Blower Assembly.
3. Install Belt into groove of 'V' Groove Idler.
4. Tighten 'V' Groove Idler Bolt to maintain belt position.
5. Twist Belt clockwise a quarter turn to position backside of Belt to ride on the Flatback Idlers.
6. Tighten Flatback Idler Bolts to maintain belt position.
7. Pull Belt slack to mower side of Blower and recheck belt position..
8. Replace Blower Pulley Cover.

Belt Routing on Mower Deck Pulley



Belt Installation onto Mower Deck

1. Install Blower Assembly onto Mower Deck
2. Pull on handle on front of Blower Assembly to extend Belt.
3. With handle pulled back, place belt onto Deck Pulley
4. Make sure Belt makes an 'X' over the Deck.
5. Release handle to tension the Belt.
6. Install Deck Pulley Cover.

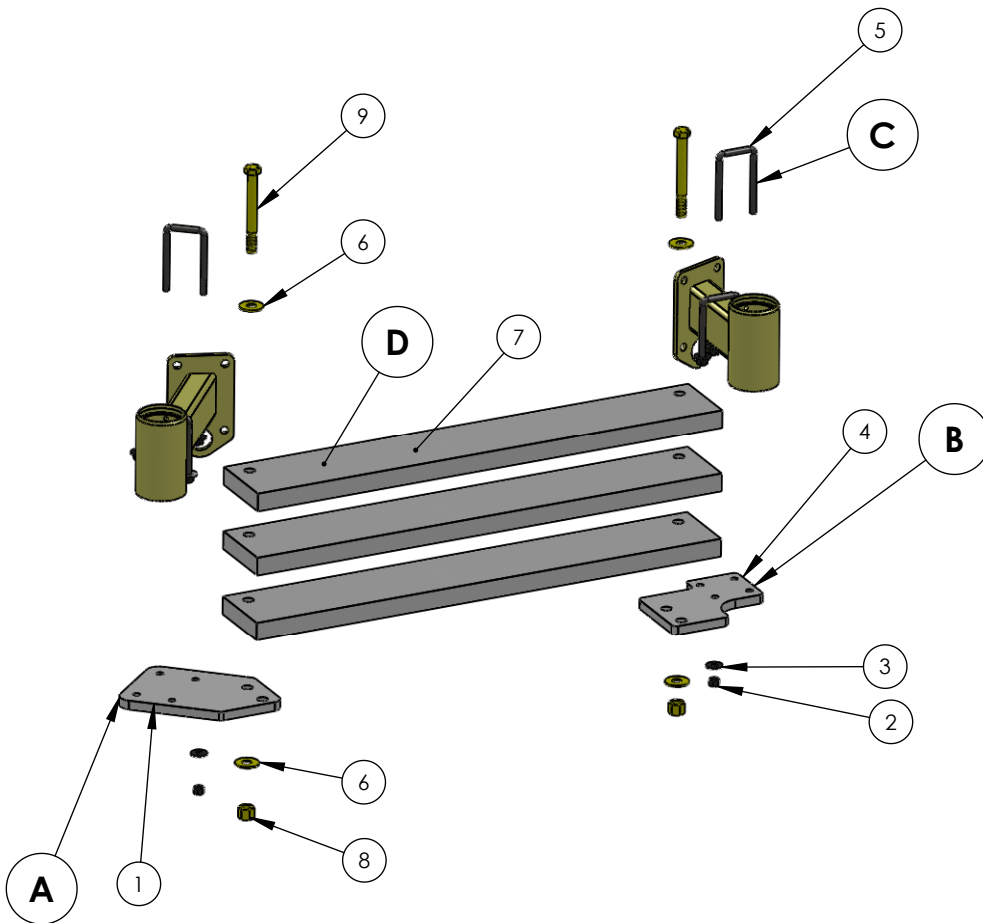
Belt Fit Tips:

The system is designed to have a loose fitting belt. it is normal to have the 3-4 inches of movement in the belt with the tensioner engaged. Make sure the belt makes an "X", if it doesnt the system will not collect clippings.

52" WEIGHT INSTALLATION (for units after 5/15/11)

FOR OLDER COLLECTION SYSTEMS, SEE END OF THIS MANUAL FOR WEIGHT INSTALLATIONS

WEIGHT INSTALLATION (52" DECKS)



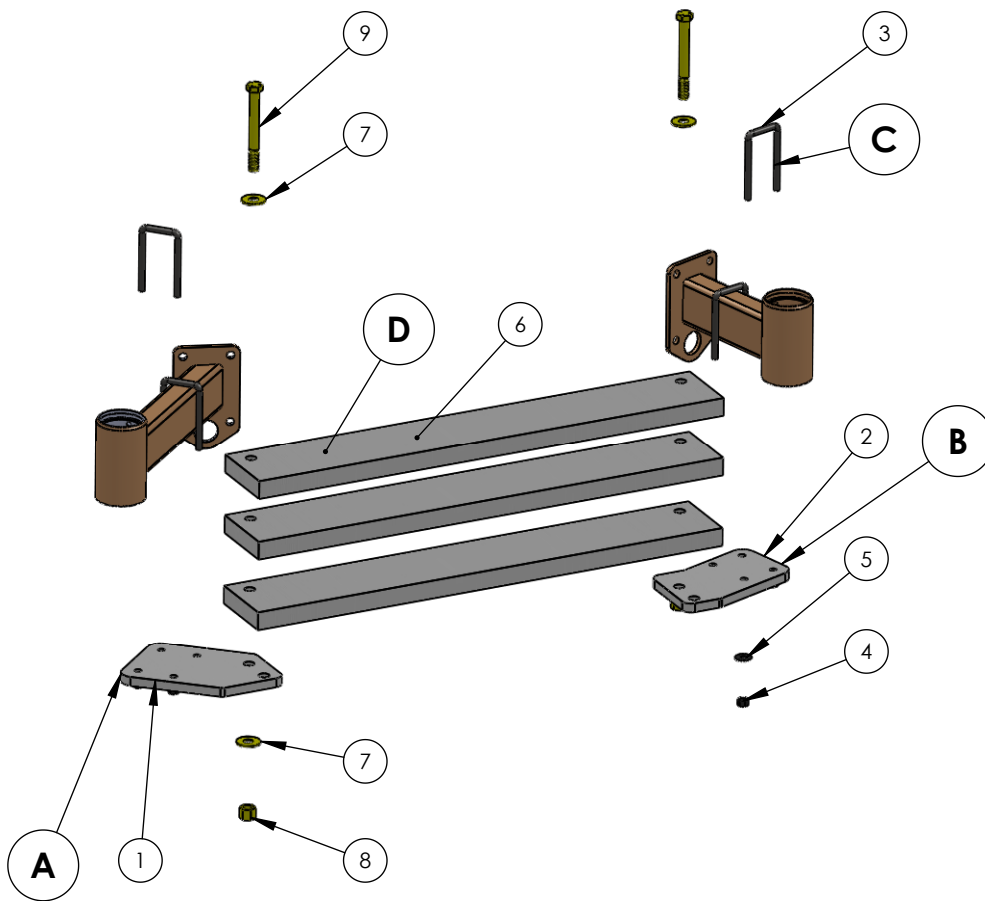
- Orient the weight bracket **(A)**, as shown, to the right side of the caster weldment
- Use (2) 5/16 'U' bolts **(C)** and hardware to secure weight bracket to the frame **DO NOT FULLY TIGHTEN**
- Orient weight bracket **(B)**, as shown to left side of caster weldment
- Use (2) 5/16 'U' bolts **(C)** and hardware to secure the weight bracket to the frame **DO NOT FULLY TIGHTEN**
- Align the holes in the 30# weights **(D)** to the rear holes of the weight brackets
- Using (2) 1/2" BOLTS **(9)** and hardware, secure both sides of the weights to the brackets
- Align the weights to be parallel to the front of the mower and tighten all hardware fully

ITEM NO.	SGC PART#	DESCRIPTION	QTY.
1	4164305	Bobcat 200 Series 61" Rt Ctr Wt Brkt	1
2	64229-02	5/16-18 Nylon Insert Nut	14
3	64163-87	5/16" Flat Washer	14
4	4163077	Bobcat Wt Bracket 52"- 200 Series	1
5	4166635	5/16 X 3.5" U-BOLT	4
6	64163-19	1/2" Flat Washer	6
7	4166849	30# Ctr Wt IS	3
8	64229-05	1/2-13 Nylon Insert Nut	2
9	64123-74	CAP SCREW, 1/2-13 x 4 1/2"	2

61" WEIGHT INSTALLATION (for units after 5/15/11)

FOR OLDER COLLECTION SYSTEMS, SEE END OF THIS MANUAL FOR WEIGHT INSTALLATIONS

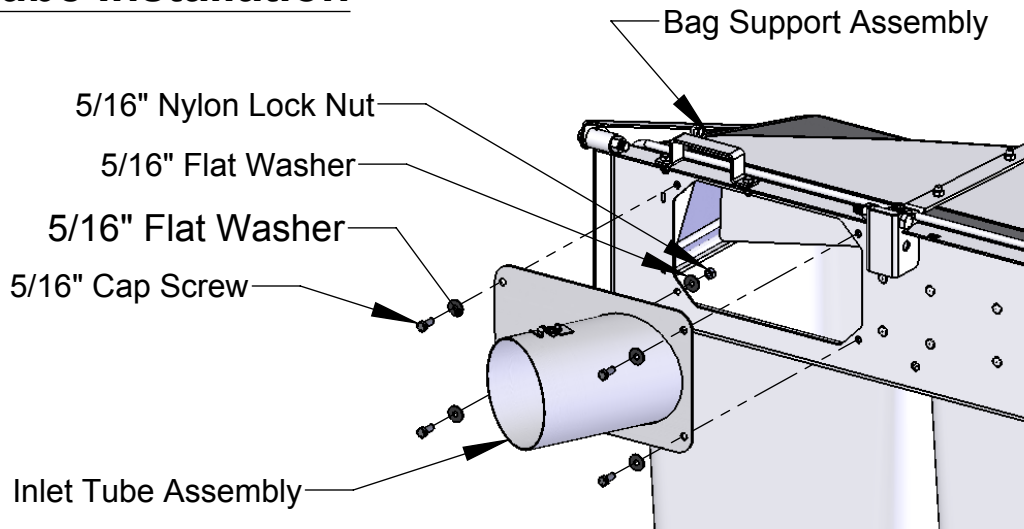
WEIGHT INSTALLATION (61" DECKS)



- Orient the weight bracket **(A)**, as shown, to the right side of the caster weldment
- Use (2) 5/16 "U" bolts **(C)** and hardware to secure weight bracket to the frame
DO NOT FULLY TIGHTEN
- Orient weight bracket **(B)**, as shown to left side of caster weldment
- Use (2) 5/16 "U" bolts **(C)** and hardware to secure the weight bracket to the frame
DO NOT FULLY TIGHTEN
- Align the holes in the 30# weights **(D)** to the rear holes of the weight brackets
- Using (2) 1/2" BOLTS **(9)** and hardware, secure both sides of the weights to the brackets
- Align the weights to be parallel to the front of the mower and tighten all hardware fully

ITEM NO.	SGC PART#	DESCRIPTION	61/QTY.
1	4164305	Bobcat 200 Series 61" Rt Ctr Wt Brkt	1
2	4164306	Bobcat 200 Series 61" Left Ctr Wt Bracket	1
3	4166635	5/16 X 3.5" U-BOLT	4
4	64229-02	5/16-18 Nylon Insert Nut	8
5	64163-87	5/16" Flat Washer	8
6	4166849	30# Ctr Wt IS	3
7	64163-19	1/2" Flat Washer	4
8	64229-05	1/2-13 Nylon Insert Nut	2
9	64123-74	CAP SCREW, 1/2-13 x 4 1/2"	2

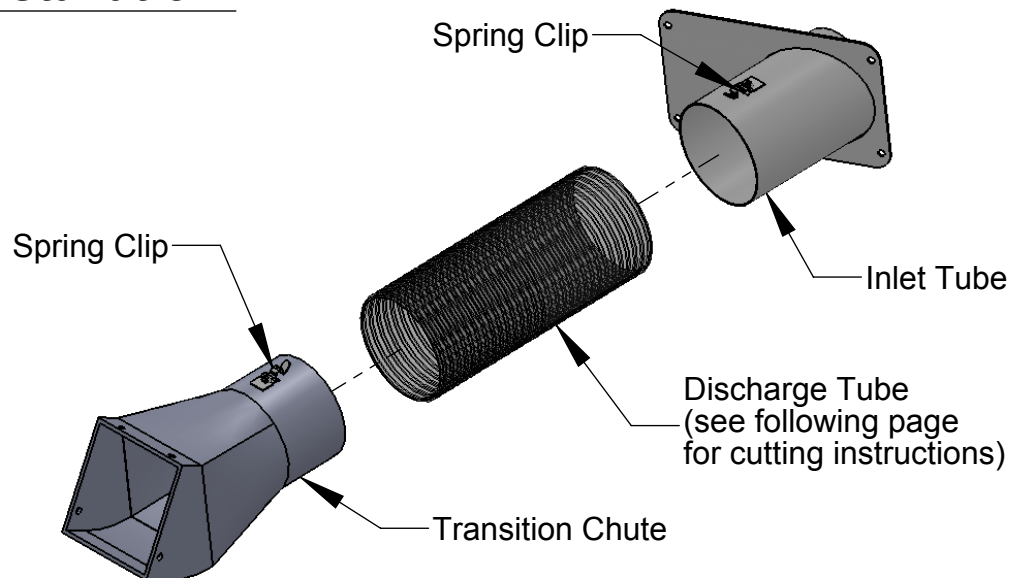
Inlet Tube Installation



Initial Installation:

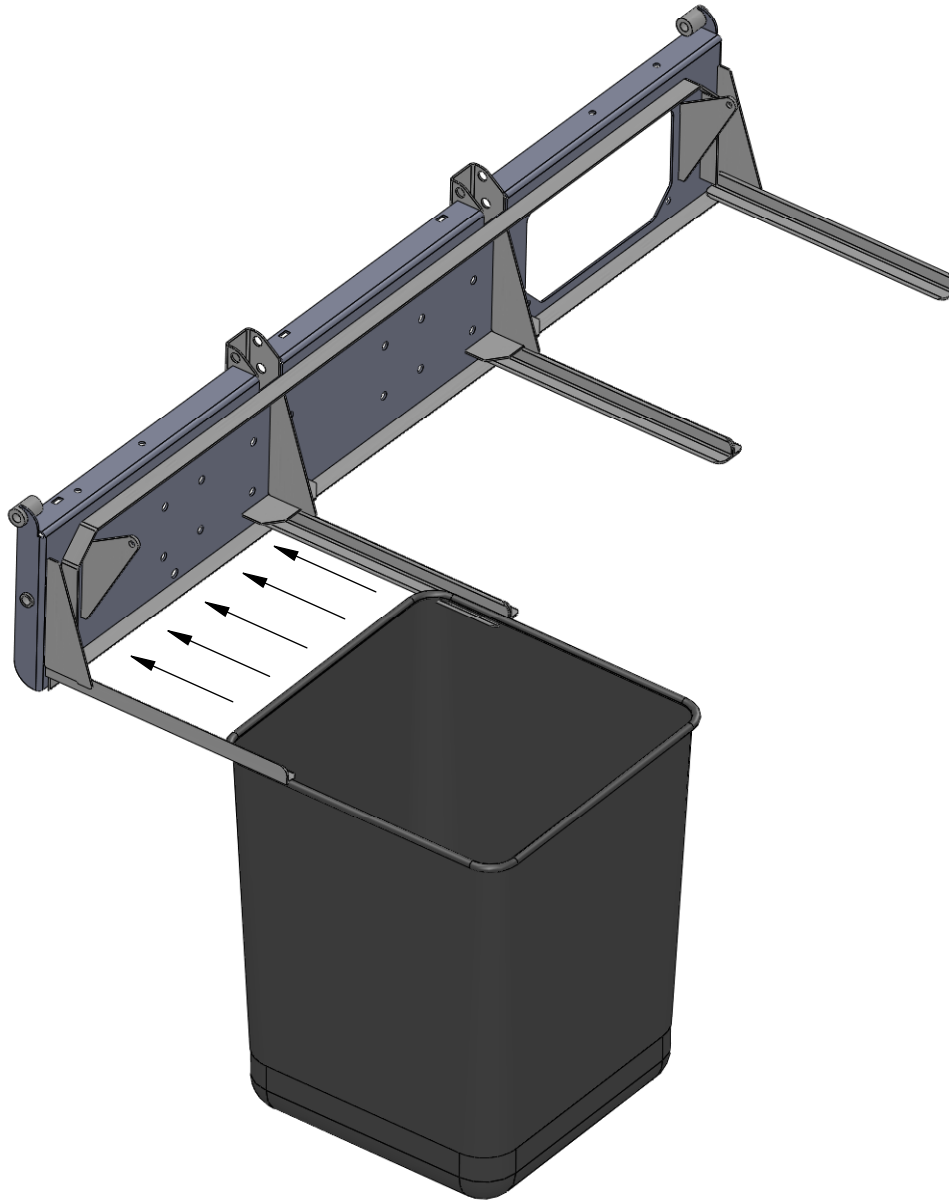
1. This operation to be performed only on the initial installation.
2. Orient the inlet tube assembly with the spring clip on the top of the tube.
3. Insert the short end of the tube into the opening of the bag support.
4. Install 5/16" Cap Screws with Flat Washers and secure with 5/16" Nuts.

Discharge Hose Installation:



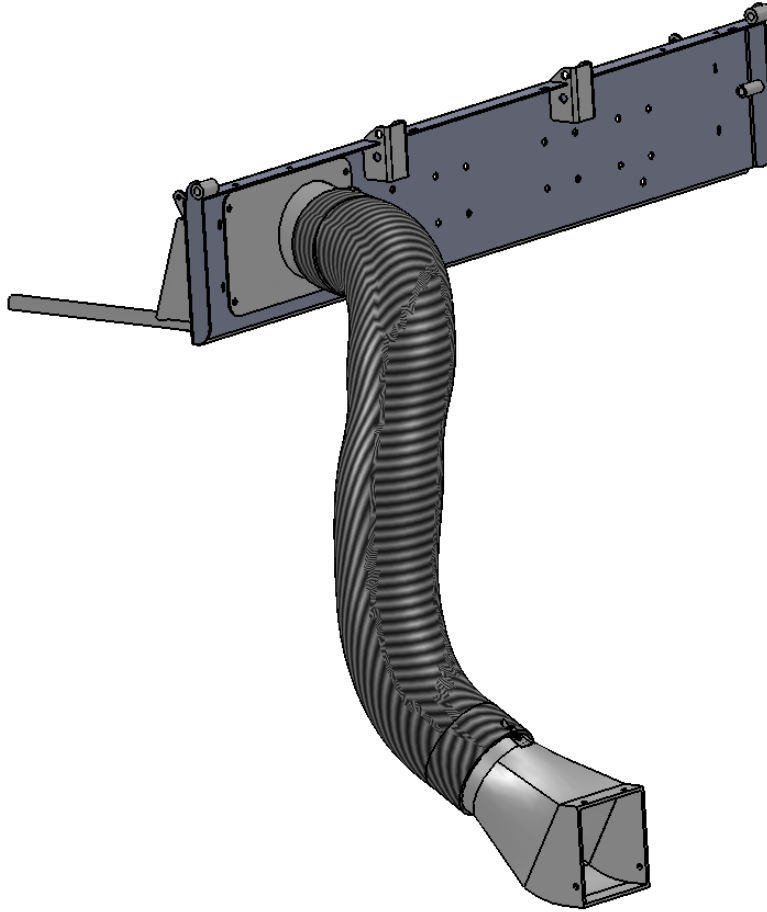
1. Open Spring Clip on Inlet Tube of Catcher Assembly.
2. Slide Discharge Tube over Inlet Tube on Catcher Assembly.
3. Assembly may be eased by using 'Lemon Furniture Polish' on initial installation.
4. Close Spring Clip over raised rib to secure Discharge Tube.
5. Open Spring Clip on Transition Chute of Blower Assembly.
6. Slide remaining end of Discharge Tube over Transition Chute.
7. Close Spring Clip over raised rib to secure Discharge Tube.

Bag Installation Instructions



1. After catcher is installed on mower:
2. Raise Lid to install bags.
3. Slide bag along rails
4. Orient bag so the warning label is towards engine.
5. Close catcher lid.
6. Secure travel lock pin.

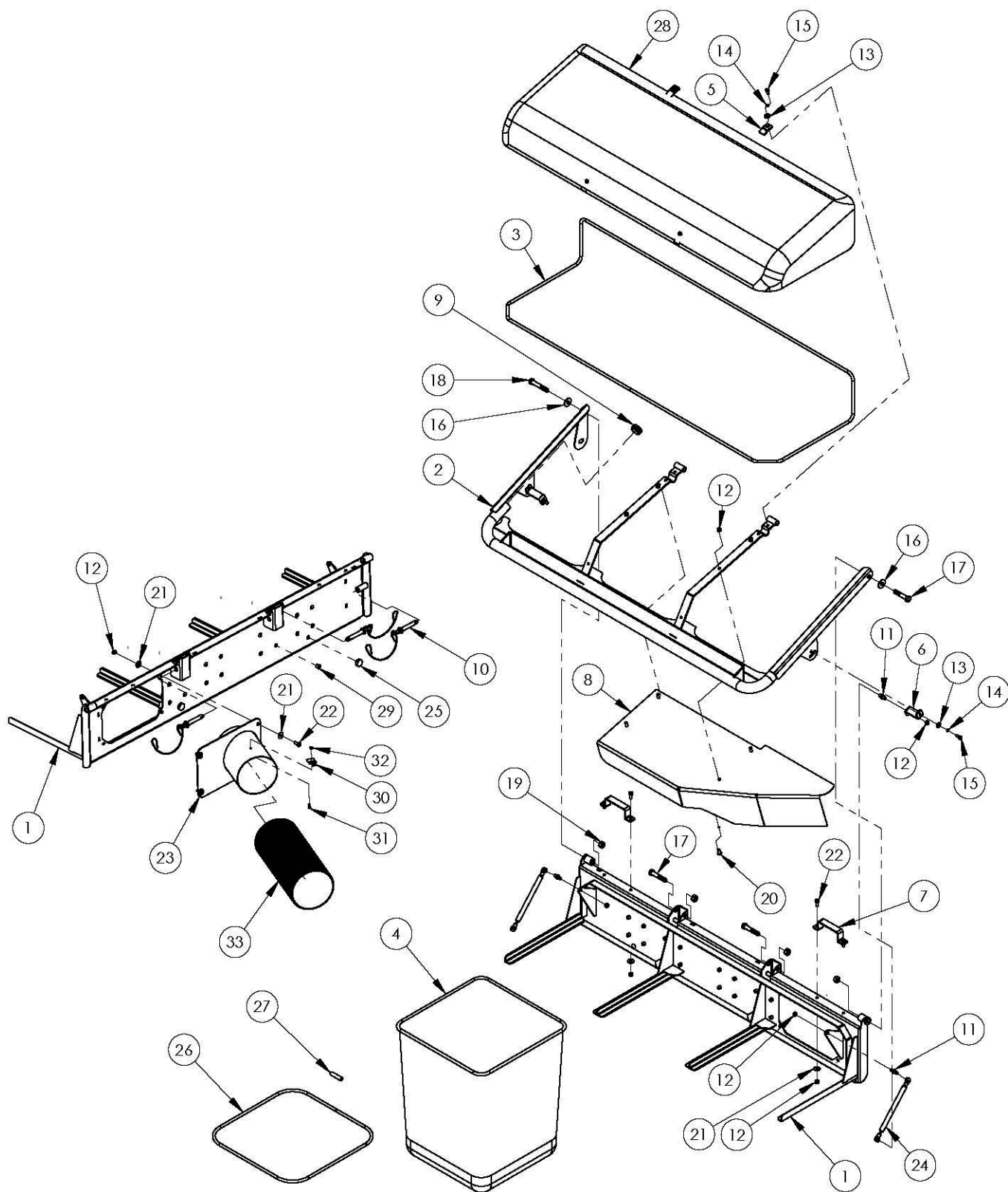
Hose Trimming Information



Trimming to Length Instructions:

1. With Rear Catcher and Blower installed, lower deck to its '**LOWEST**' position.
2. For easier initial installation, spray inside opening of hose with Lemon Furniture Polish.
3. Install hose onto inlet tube of catcher to reach retaining clip.
4. Close clip over spiral bead of the hose.
5. Position hose along outside of the Transition Chute of Blower.
6. Note approximate length of hose at retaining clip and add 2 inches.
7. Cut spiral bead on hose with side cutters and trim hose to length.
8. Install the hose onto the Transition Chute of the Blower to reach the clip.
9. Close clip over spiral bead of the hose.
10. The hose should make a gentle curve from the blower to the catcher.
11. If necessary to further shorten hose, trim the hose by removing one spiral at a time.

Caution: Do Not Trim Hose Too Short!!!

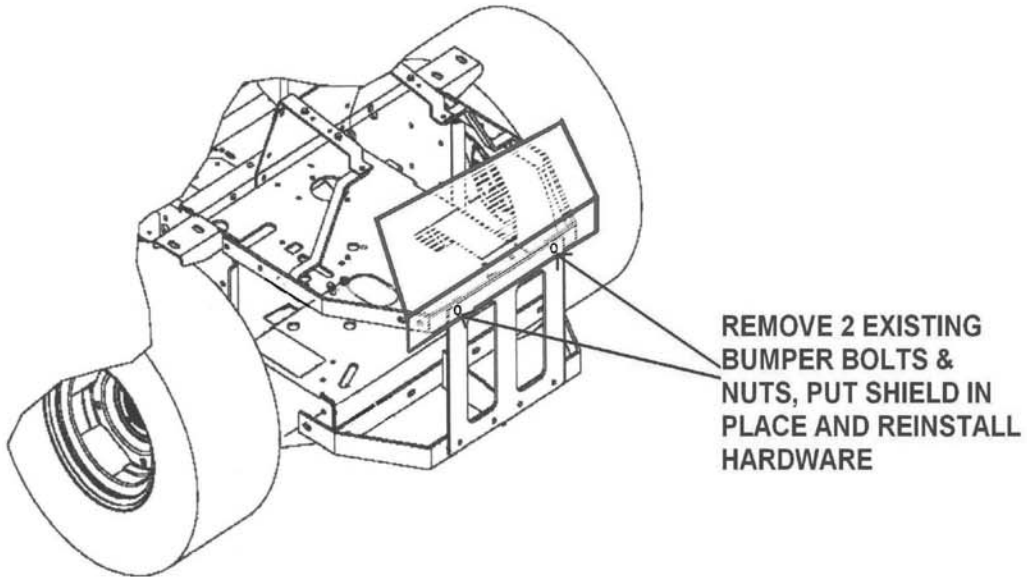


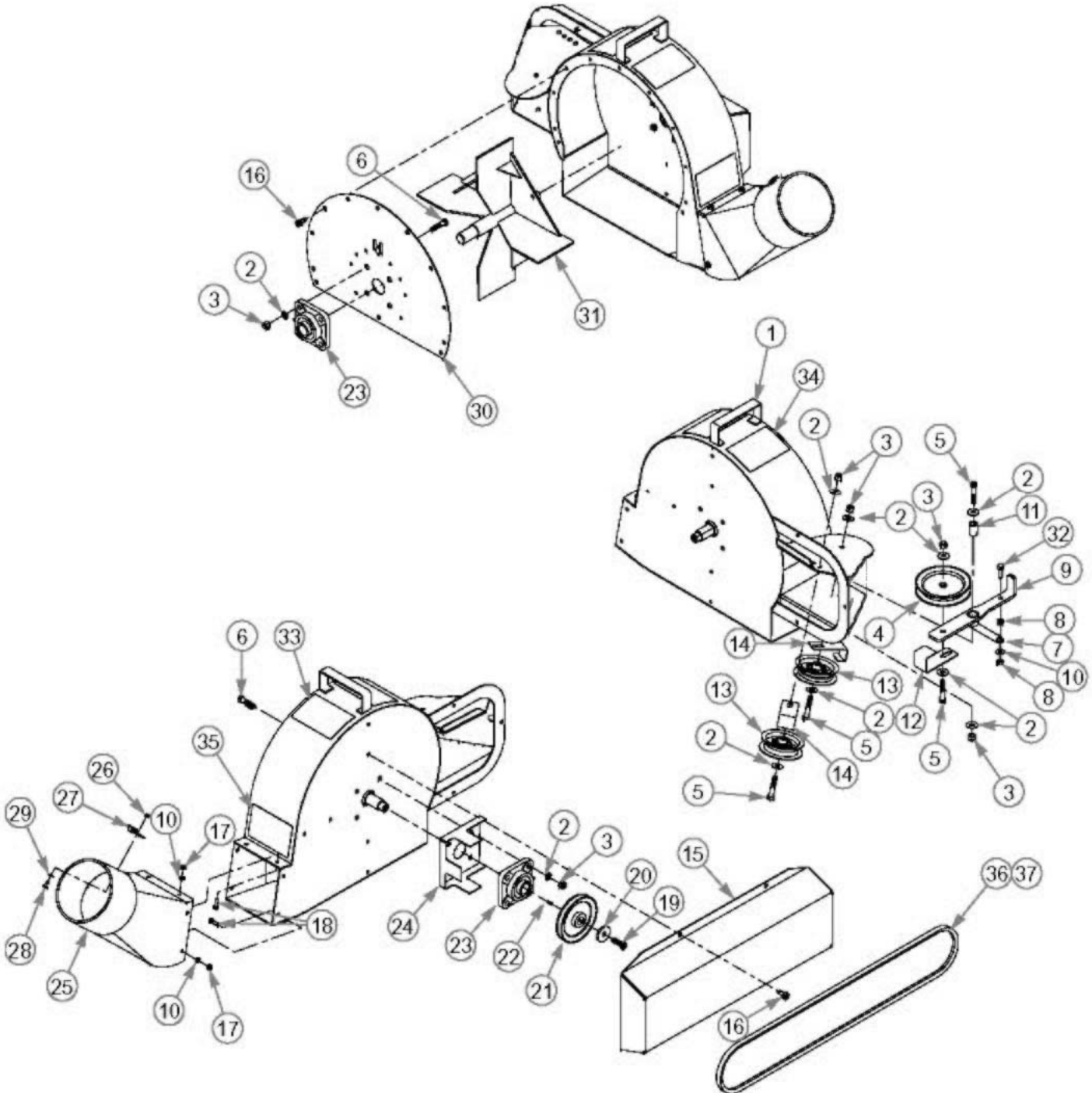
3-Bag Catcher Assembly Parts List

Index	Part No.	Qty	Description
1	4139401	1	3 BAG CATCHER BAG SUPPORT MOUNT
2	4137061	1	CAP SUPPORT
3	4139393	1	AIR DOME FRAME-3-BAG-3/8" ROD-ONE PIECE
4	4137072	3	CATCHER BAG
5	4139391	4	BRACKET-SINGLE HOLE MOUNT
6	4137060	2	BRACKET-GAS CYLINDER MOUNT
7	4137074	5	BAG HANDLE
8	4137064	1	3 BAG DEFLECTOR
9	4139389	2	ROUND PLASTIC PLUG-1 1/2"
10	4137069	3	DETENT PIN W/ LANYARD-1/2" X 2 1/2" LONG
11	4137063	4	BALL JOINT
12	64229-02	22	HEX NUT, NYLON INSERT-5/16-18
13	64163-86	6	FLAT WASHER-1/4" USS
14	64006-01	6	LOCK WASHER-1/4"
15	64123-06	6	CAP SCREW-1/4-20 X3/4" LONG
16	64163-79	2	FLAT WASHER-1/2"
17	64123-72	4	CAP SCREW-1/2"-13 X 2 1/2" LONG
18	64123-31	1	CAP SCREW-1/2"-13 X 3" LONG
19	64229-05	4	HEX NUT, NYLON INSERT-1/2"-13
20	4137065	4	PAN HEAD SCREW-5/16"-18 X 3/4" LONG
21	64163-87	12	FLAT WASHER-5/16"
22	64123-64	14	CAP SCREW-5/16"-18 X 3/4" LONG
23	4139394	1	INLET TUBE ASSEMBLY
24	4137070	2	GAS CYLINDER
25	4137073	2	RUBBER BUMPER
26	4137071	3	GRASS BAG FRAME
27	4137461	3	TUBE CONNECTOR
28	4139386	1	3-BAG FABRIC CAP WITH "J" STRIP-PLAIN
29	4139390	16	PLASTIC PLUG 7/16"
30	4137093	1	SPRING CLIP
31	64152-06	1	MACHINE SCREW-#10-24 X 1/2" LONG
32	64229-10	1	HEX NUT, NYLON INSERT-#10-24
33	4137066	1	3-BAG HOSE

Debris Guard Option

4163031.7 DEBRIS GUARD INSTALLATION





Blower Assembly Parts List

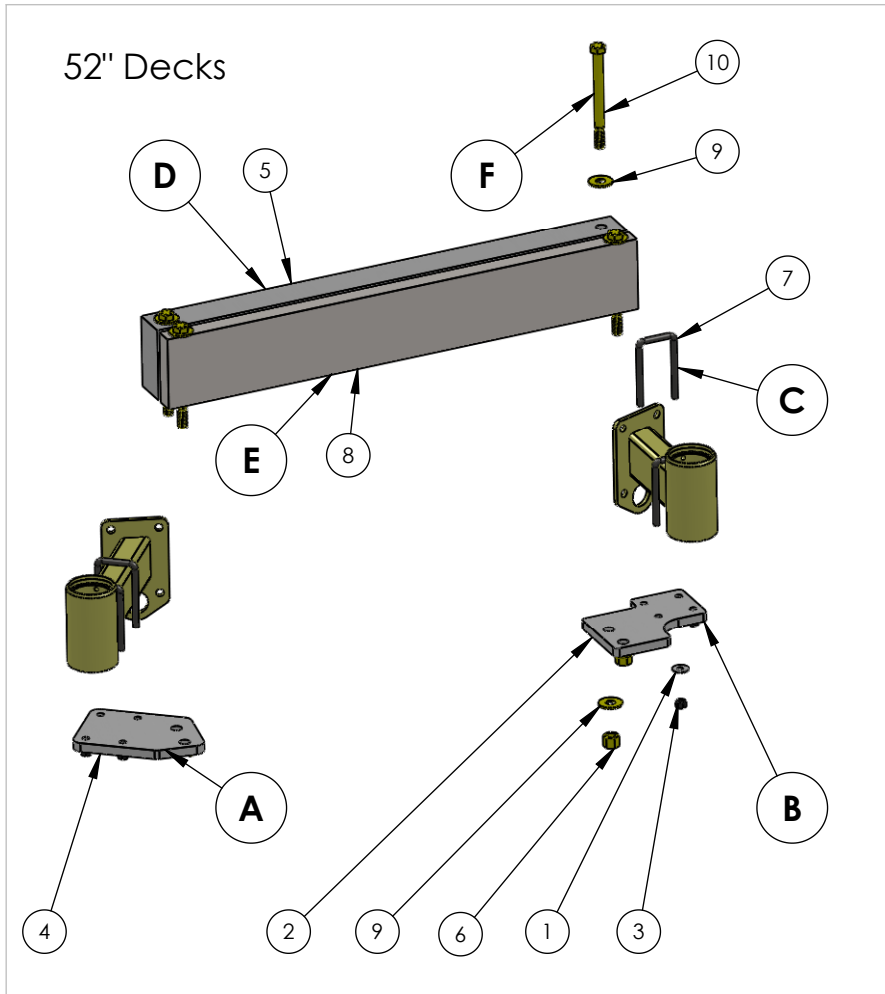
Index	Part No.	Qty	Description
1	4137081	1	BLOWER HOUSING
2	64163-87	16	FLAT WASHER-5/16"
3	64229-03	12	HEX NUT, NYLON INSERT-3/8"-16
4	4137445	1	IDLER PULLEY
5	64123-67	4	CAP SCREW-3/8"-16 X 2" LONG
6	64123-70	8	CAP SCREW-3/8"-16 X 1 1/2" LONG G5
7	4137089	1	SPRING
8	64229-02	2	HEX NUT, NYLON INSERT-5/16"-18
9	4137088	1	BELT TENSIONING ASSEMBLY
10	64163-86	5	FLAT WASHER 1/4" USS
11	4137446	1	BELT TENSIONING BUSHING
12	4137447	1	BELT GUIDE, LARGE PULLEY
13	4137087	2	BACK SIDE BELT IDLER PULLEY
14	4139395	2	BELT GUIDE SMALL PULLEY
15	4137075	1	BELT COVER
16	64197-02	9	SELF THREADING SCREW UNSLOTTED-5/16"-18 X 5/8" LONG
17	64229-01	4	HEX NUT, NYLON INSERT-1/4"-20
18	64123-06	4	CAP SCREW-1/4"-20 X 3/4" LONG
19	64123-50	1	CAP SCREW-3/8"-16 X 1.0" LONG
20	64163-31	1	FLAT WASHER-3/8" HARDENED
21	4137090	1	DRIVE PULLEY
22	4137091	1	KEY
23	4137092	2	BEARING
24	4137448	1	BELT GUIDE
25	4137086	1	TRANSITION CHUTE
26	64229-10	1	HEX NUT, NYLON INSERT, #10-24
27	4137093	1	SPRING CLIP
28	64152-06	1	MACHINE SCREW-#10-24 X 1/2" LONG
29	4139403	1	FLAT WASHER-#10 FENDER
30	4137083	1	BLOWER COVER
31	4137082	1	IMPELLER
32	64123-68	1	CAP SCREW-5/16"-18 X 1" LONG
33	4139400	1	LABEL, DANGER-TURN OFF MOWER
34	4139399	1	LABEL, DANGER-ROTATING BLADES
35	4139398	1	LABEL, DANGER-THROWN OBJECT
36	4137076	1	BELT-52" DECKS
37	4137080	1	BELT-61" DECKS

THE FOLLOWING PAGES ARE FOR HISTORICAL REFERENCE ONLY.

PARTS USED IN THIS SYSTEM HAVE CHANGED.

USE PART NUMBERS CALLED OUT FOR THE UNIT CONFIGURATION YOU HAVE.

52" Weight installation



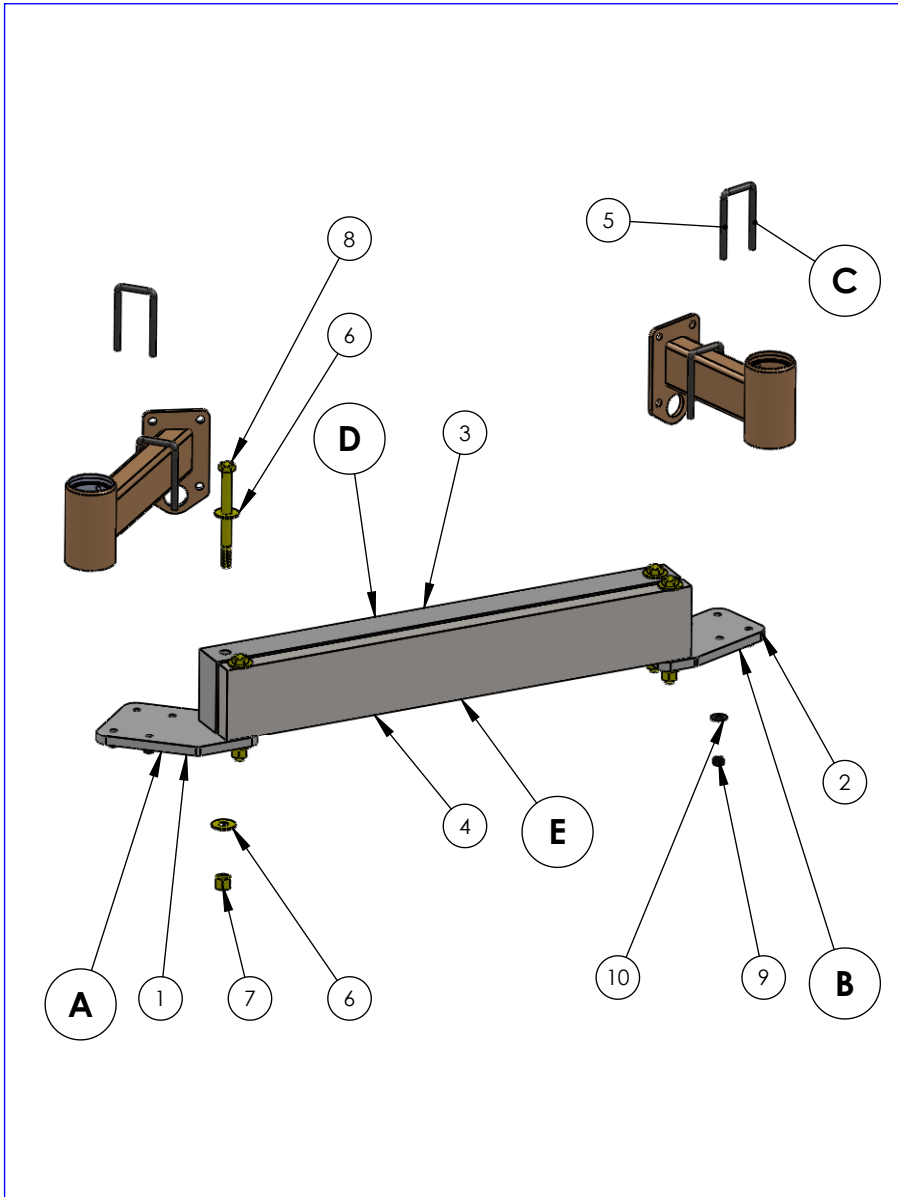
WEIGHT INSTALLATION (ALL DECK SIZES)

- Orient weight bracket (A), as shown, to the right side caster weldment
- Use (2) 5/16 UBolts (C) and hardware to secure the weight bracket to the frame **DO NOT FULLY TIGHTEN**
- Orient weight bracket (B), as shown, to the left side caster weldment
- Use (2) 5/16 UBolts (C) and hardware to secure the weight bracket to the frame **DO NOT FULLY TIGHTEN**
- Align the holes in the 60# weight (D) to the rear holes of the weight brackets
- Using (2) 1/2" bolts and hardware secure both sides of the weight to the brackets
- Align the holes in the 30# weight (E) to the front holes in the weight brackets and secure with (2) 1/2" bolts and hardware
- Align the weights to the mower and tighten all hardware

ITEM NO.	SGC PART#	DESCRIPTION	52/QTY.
1	64163-87	5/16" Flat Washer	8
2	4163077	Bobcat Wt Bracket 52"- 200 Series	1
3	64229-02	5/16-18 Nylon Insert Nut	8
4	4163076	Bobcat 52" Wt Bracket - RT	1
5	4146980	Generic 60# Ctr Wt	1
6	64229-05	1/2-13 Nylon Insert Nut	4
7	4166635	5/16 X 3.5" U-BOLT	4
8	4146979	Generic 30# Ctr Wt	1
9	64163-19	1/2" Flat Washer	8
10	64123-166	1/2-13 x 5 1/2" Bolt	4

61" WEIGHT INSTALLATION

WEIGHT INSTALLATION (ALL DECK SIZES)



- Orient weight bracket (A), as shown, to the right side caster weldment
- Use (2) 5/16 UBolts (C) and hardware to secure the weight bracket to the frame **DO NOT FULLY TIGHTEN**
- Orient weight bracket (B), as shown, to the left side caster weldment
- Use (2) 5/16 UBolts (C) and hardware to secure the weight bracket to the frame **DO NOT FULLY TIGHTEN**
- Align the holes in the 60# weight (D) to the rear holes of the weight brackets
- Using (2) 1/2" bolts and hardware secure both sides of the weight to the brackets
- Align the holes in the 30# weight (E) to the front holes in the weight brackets and secure with (2) 1/2" bolts and hardware
- Align the weights to the mower and tighten all hardware

ITEM NO.	SGC PART#	DESCRIPTION	61/QTY.
1	4164305	Bobcat 200 Series 61" Rt Ctr Wt Brkt	1
2	4164306	Bobcat 200 Series 61" Left Ctr Wt Bracket	1
3	4146980	Generic 60# Ctr Wt	1
4	4146979	Generic 30# Ctr Wt	1
5	4166635	5/16 X 3.5" U-BOLT	4
6	64163-19	1/2" Flat Washer	8
7	64229-05	1/2-13 Nylon Insert Nut	4
8	64123-166	1/2-13 x 5 1/2" Bolt	4
9	64229-02	5/16-18 Nylon Insert Nut	8
10	64163-87	5/16" Flat Washer	8