



One BOB-CAT Lane, P.O. Box 469  
Johnson Creek, WI 53038 U.S.A.  
(920) 699 2000  
Fax: (920) 699 6836

---

## **PARTS BULLETIN**

January 22, 2010

Bulletin No: JC-001-10

**Product Type:** SC101 Stump Cutter

**Issue:** Cutter bit description change (not part number)

**Correction:** When ordering cutters, refer to the drawing and part number – ignore “left” and “right” in the description of the parts book. This is due to confusion with what is considered “left” and “right”.

**Action Required:** Put the following 2 pages in your parts book for future reference

**Parts Involved:** 79-054 and 79-055

**Warranty:** Does not apply

If you have any questions, please contact the Schiller Grounds Care, Inc. Customer Service Department at 920-699-2000.

This bulletin is relevant to the departments shown below. Please circulate as appropriate.

SERVICE

☒

WARRANTY

☐

SALES

☐

PARTS

☒

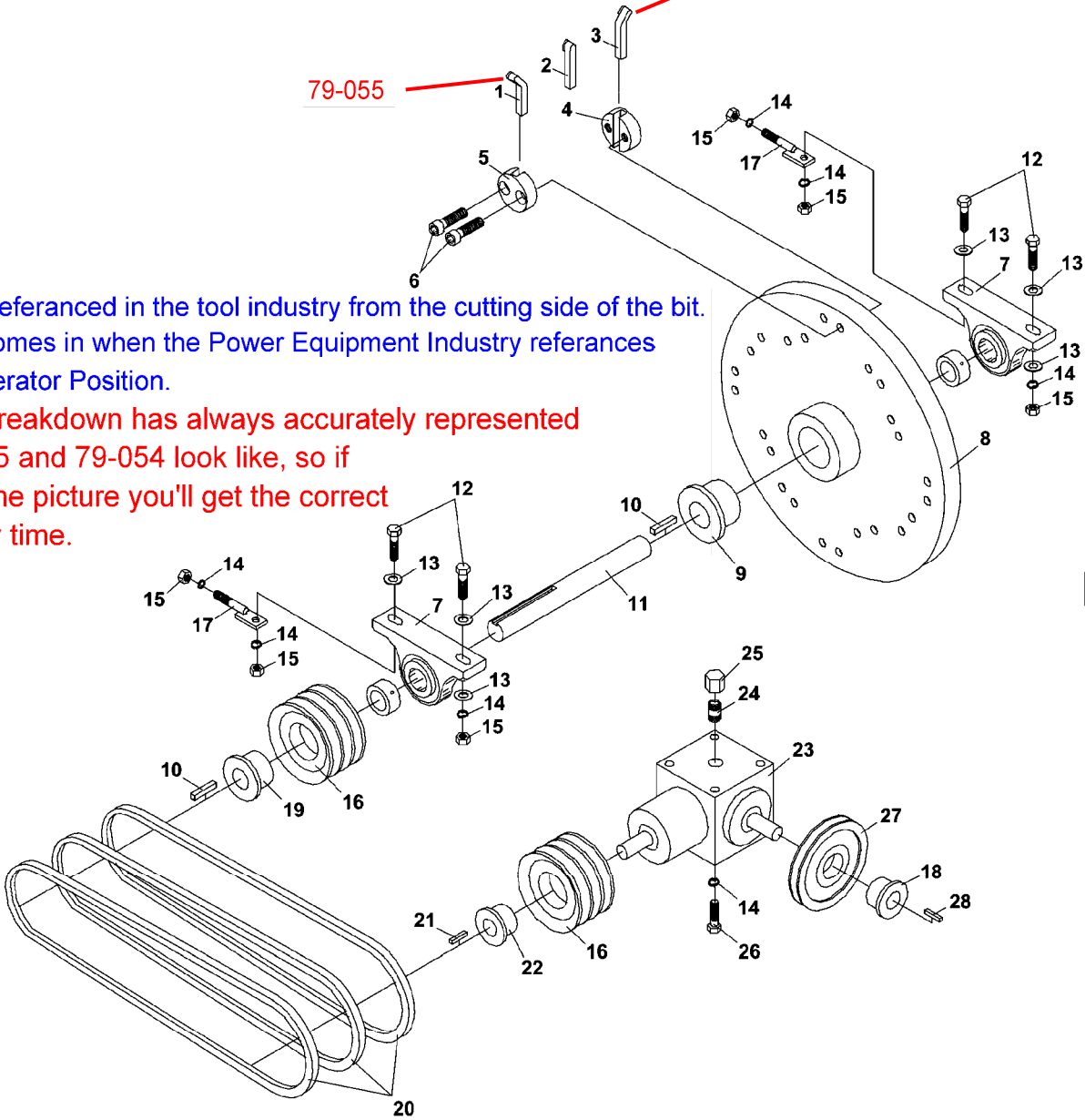
Front of machine

79-055 79-054

Cutters are referanced in the tool industry from the cutting side of the bit.  
Confusion comes in when the Power Equipment Industry referances  
from the Operator Position.

The parts breakdown has always accurately represented  
what 79-055 and 79-054 look like, so if  
you go by the picture you'll get the correct  
cutter every time.

Operator's position



Ref #	Part Number	Qty	Description
1	79-055	10	Cutter
2	79-056	4	Cutter
3	79-054	10	Cutter
4	79-057	12	HOLDER-THREADED
5	79-058	12	HOLDER-COUNTERSUNK
6	99-20	24	BOLT, 5/8-18 X 1-3/4
7	55-PB22023	2	BEARING-PILLOW BLOCK
8	4136416.7	1	STUMP CUTTER ROTOR
9	83-SF23	1	BUSHING, SF X 1-7/16
10	64164-26	2	KEY-3/8x3/8x1-1/2 SQ
11	80-226	1	SHAFT-CUTTER
12	64123-24	4	BLT-HEX 1/2-13X2
13	64163-67	6	WASHER-.516X1X12GA
14	64006-05	10	LOCKWSHR-HELICAL 1/2
15	64025-09	6	HEX, NUT 1/2-13
16	83-3B46SD	2	PULLEY-3 GROOVE
17	42-398	2	TIGHTENER-BELT IDLER
18	D3032	1	BUSHING
19	83-SD23	1	BUSHING
20	81-B045	3	BELT-B45
21	64164-10	1	1/4X1/4X1-1/4 MACH KEY
22	83-SD20	1	BUSHING
23	87-175	1	GEARBOX
24	29-079	1	PIPE NIPPLE, 1/2 X 1.1/2
25	24-033	1	CAP-VENTED
26	90-0808	4	BOLT
27	83-BK60H	1	PULLEY
	81-A043	1	DRIVE BELT-A43
	81-B045	1	DRIVE BELT-B45
	81-A043	1	DRIVE BELT-A43
	81-B044	1	DRIVE BELT-B44
28	64164-11	1	KEY-3/16X3/16X1-1/4 SQ
	70-098	1	GEARBOX KIT
	D3032	1	BUSHING
	87-175	1	GEARBOX
	83-BK60H	1	PULLEY
	64164-11	1	KEY-3/16X3/16X1-1/4 SQ