

## **INFORMATION BULLETIN**

**Date: 4-18-2008**

**Product Type: PARTS BULLETIN**

**Bulletin No: JC-011-08**

### **Suspension Seat Components**

**ISSUE:** There appears to be a well kept secret that components are available for the suspension seat used on the ZT200 series. Now also to clarify, there are two different suspension seats out there. **The most important thing to note is the spring assembly is available as a kit # 970363.** Refer to the following pages for information on additional seat components we offer to repair these seats.

**ACTION REQUIRED:** In the event of failure of any of these components, in or out of the warranty period please refer to this bulletin for components.

**PARTS INVOLVED: 970363 Spring & Saddle Kit**

If you have any questions please contact Commercial Grounds Care, Inc.  
Customer Service Department @ 920-699-2000

This bulletin is relevant to the departments shown below. Please circulate as appropriate.

SERVICE

☒

WARRANTY

☐

SALES

☐

PARTS

☒

04-18-2008

THESE ARE THE SEAT COMPONENTS FOR THE V-5200 MICHIGAN SEAT THAT PRECEDED THE V-5300. The way to tell them apart I the V-5200 has a step down to the back, right behind your neck the seat is higher than it is where the shoulders would be. The V-5300 is perfectly rounded – no step down

Part #	Description	Suggested List
2720975-01	KIT-SEAT CUSHION W/HARDWA	121.64
2720975-02	KIT-BACK CUSHION W/HARDWA	161.77
2720975-03	ADJUSTER	42.10
2720975-04	ADJUSTER W/HANDLE	42.10
2720975-05	CABLE ASSEMBLY	18.09
2720975-06	SPACER-NYLON 5/8	1.86
2720975-07	SPACER-NYLON 3/8	1.35
2720975-08	ASSY-SEAT BACK PANEL	59.90
2720975-09	SPACER-NYLON 1/4	1.01



This is the V-5300



This is the V-5200

Part # 4122479 or Kit 970298 is the V-5300 seat  
THE PARTS FOR THE V-5300 ARE:

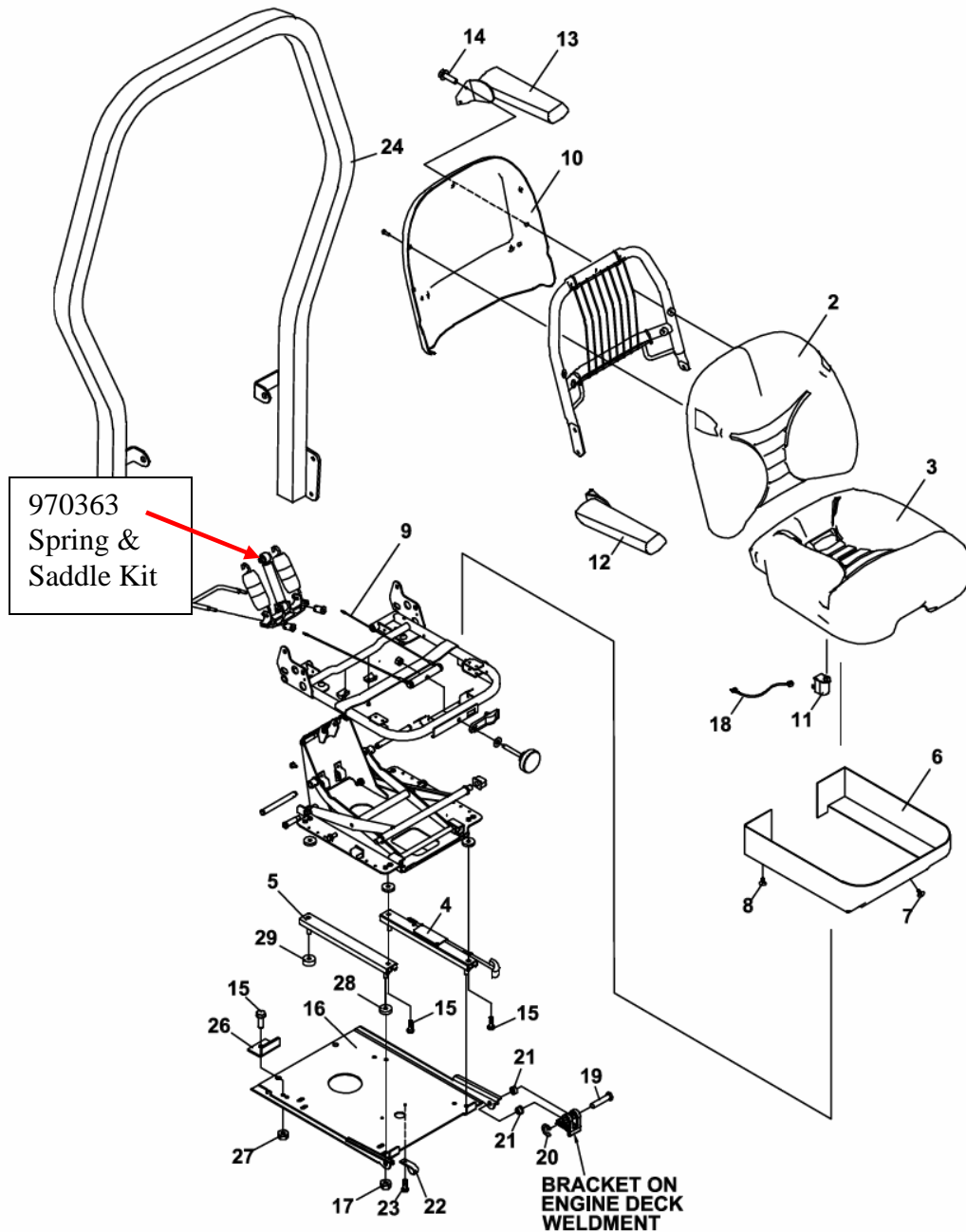
Part #	Description	Suggested List
4122479-01	CUSHION-SEAT BACK	96.28
4122479-02	CUSHION-SEAT BOTTOM	132.85
4122479-03	SLIDE RAIL-ADJUSTER	36.31
4122479-04	SLIDE RAIL-SLAVE	36.31
4122479-08	ASSY-CABLE	25.43
4122479-09	BACK PANEL-SEAT	74.88
970363	KIT-SPRING & SADDLE ZT2 = 16075S Michigan	68.59

The below listed parts are for:

4122479 Seat Assy.

970298 Complete Seat Kit w/mounting platform

(Michigan # V-5300)



ITEM	PART NO.	DESCRIPTION	QTY
1	4122479	SEAT-SUSPENSION (INCLUDES ITEMS 2-15)	1
2	4122479-01	CUSHION-SEAT BACK	1
3	4122479-02	CUSHION-SEAT BOTTOM	1
4	4122479-03	SLIDE RAIL-ADJUSTER	1
5	4122479-04	SLIDE RAIL-SLAVE	1
6	4122479-05	SKIRT-SEAT ASSY	1
7	4122479-06	CLIP-SMALL XMAS TREE	3
8	4122479-07	CLIP-LARGE XMAS TREE	4
9	4122479-08	ASSY-CABLE	1
10	4122479-09	BACK PANEL-SEAT	1
11	4124009	SWITCH-SEAT NO	1
12	4122481	ARMREST-RH	1
13	4122480	ARMREST-LH	1
14	64123-68	BOLT-HEX 5/16-18X1	4
15	64123-54	BOLT, 5/16-18X3/4 HEX	5
16	4121386.7	PLATE-SEAT	1
17	64141-6	NUT-WLF 5/16-18	4
18	158136	WIRE-SEAT SWITCH	1
19	33138-09	PIN-CLEVIS GRVD .38X1.31	2
20	64144-30	SNAP RING .375	2
21	38371-01	BRG-NYLINER 3/8	4
22	48228A	CABLE CLIP-INSULATED	1
23	64152-23	SCREW 1/4-20X3/8	1

**OPTIONAL ROPS:**

24	970162	ATT-ROPS (INCLUDES ITEM 25)	
25*	2208260	S-SEAT BELT	1
26	4122434.7	STOP-SEAT	1
27	64229-02	LOCKNUT-NYLON 5/16-18	1
28	2720975-07	SPACER-NYLON 3/8"	2
29	2720975-09	SPACER-NYLON 1/4"	2