

INFORMATION BULLETIN

Date: 6-18-2008

Product Type: **Fastcat & Rocket**

Bulletin No: JC-014-08

970345 Anti Scalp Kit f/42" FastCat/Rocket

ISSUE: To satisfy request for optional Anti Scalp Rollers on the 42" BOB-CAT FastCat, and Bunton Rocket, we have produced a kit **#970345**. These rollers will mount to the front left & right side of the 42" deck.

Rear Anti Scalp kit is 970397. You will need to order BOTH kits if you want Anti Scalp wheels on the Front and rear of the deck

ACTION REQUIRED: Any customers desiring to have anti scalp rollers on their unit can order this kit as an option.

PARTS INVOLVED: 970345 FRONT Kit, 970397 REAR Kit. See following instruction sheets for component and installtion information.

If you have any questions please contact Commercial Grounds Care, Inc.
Customer Service Department @ 920-699-2000

This bulletin is relevant to the departments shown below. Please circulate as appropriate.

SERVICE



WARRANTY



SALES



PARTS



INTRODUCTION: This instruction sheet covers the installation of the 42" Anti-scalp Roller Kit (970345) for the 42" Cutterdeck(s).

TOOLS REQUIRED

- Drill.
- 13/32" drill bit.
- Center punch.
- Tape measure or ruler.
- Blocks (for deck support).
- Ratchet with extension and 9/16" socket.

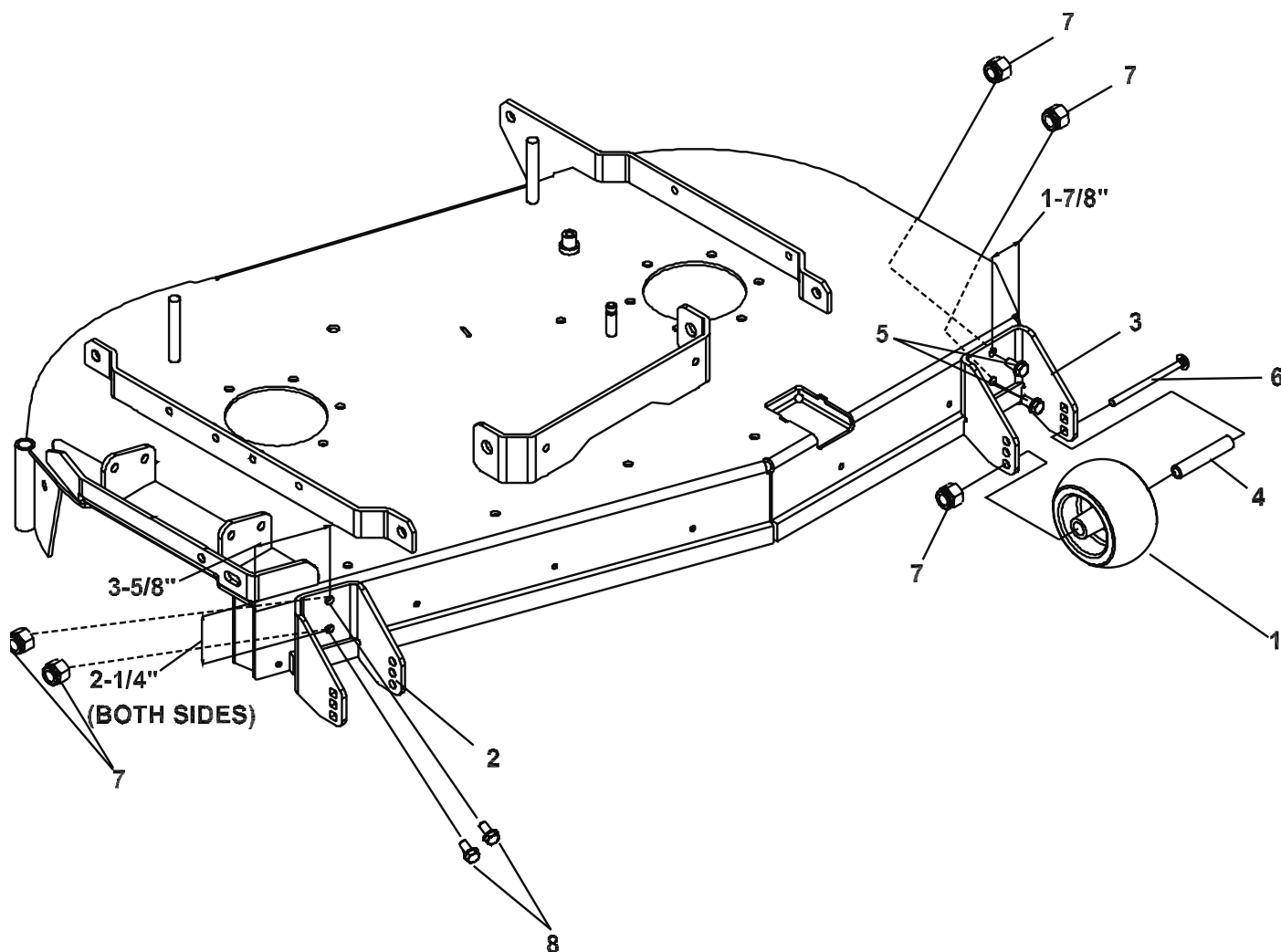
NOTE: All references below to the "right" or "left" are with respect to an operator at the controls.

NOTE: Park the machine on a smooth, level surface. Raise the deck to the transport position and remove the pin. Lower the deck onto a set of equal height blocks.

- 1) If your cutterdeck does not already have the lower holes, locate and drill 13/32" holes using the dimensions on page 2. If lower holes are existing, drill out the lower holes to 13/32". **NOTE:** You will have to drill through the baffle on RH side.
- 2) Install RH roller bracket **2** and LH roller bracket **3**, using (2) 3/8-16 nuts **7**, (1) 3/8-16 X 1" bolt **5** on LH side and (1) 3/8-16 X 1-3/4" bolt **8** on RH side in the bottom holes as shown on Page 2.
- 3) Be sure roller bracket **2** is square to the deck top and using the 13/32" drill bit, mark and drill a hole in the deck, using the roller bracket as a template. Repeat this procedure on roller bracket **3**.
- 4) Install (2) 3/8-16 nuts, (1) 3/8-16 X 1" bolt **5** on LH side and (1) 3/8-16 X 1-3/4" bolt **8** on RH side as shown on Page 2 and tighten at this time.
- 5) Assemble the (2) rollers **1** to the brackets previously installed using (2) 3/8-16 X 4-1/2" carriage bolts **4**, (2) spacers **4**, and (2) 3/8-16 locknuts **7** as shown on Page 2.
- 6) Tighten all fasteners at this time.

I.S.-42" ANTI SCALP ROLLER KIT (970345)

4154980 REV B



KIT PARTS LIST

ITEM	PART NO.	DESCRIPTION	QTY
1	2721512	ROLLER	2
2	4143255.7	BRKT-RLR FRT RH	1
3	4154040.7	BRKT-ANTI SCALP RLR	1
4	2720685	SPACER-ROLLER	2
5	64123-50	BLT-3/8-16 X 1	2
6	64018-30	BLT-CRG 3/8-16 X 4-1/2	2
7	64229-03	LOCKNUT-NYLON 3/8-16	6
8	64123-87	BLT-HX 3/8-16 X 1-3/4	2

I.S.-ANTI SCALP ROLLER REAR KIT (970397)

4164794 REV A

INTRODUCTION: This instruction sheet covers the installation of the Anti-scalp Roller Rear Kit (970397) for the 42" Cutterdeck(s).

TOOLS REQUIRED

- Drill.
- Bit to drill 13/32" hole.
- Center punch.
- Scribe.
- Combination square.
- Tape measure or ruler.
- Blocks (for deck support).
- Ratchet and 9/16" socket or 9/16" wrench.
- 9/16" wrench.

NOTE: All references below to the "right" or "left" are with respect to an operator at the controls.

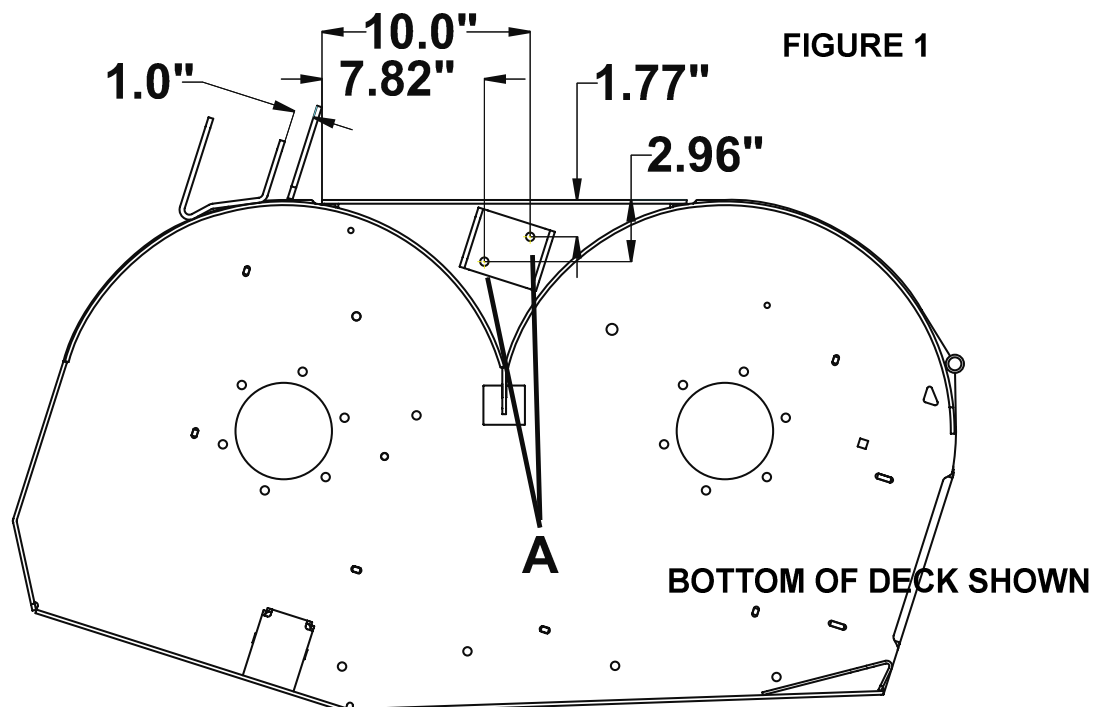
- 1) Turn unit off and remove ignition key.
- 2) Using the deck lift lever, lower the deck onto the blocks to stabilize the deck.

⚠ WARNING

Mower blades may be sharp. Wear gloves when working near blades.

- 3) For the middle anti-scalp bracket, mark and drill (2) 13/32" diameter holes **A** on the cutterdeck as shown in **Figure 1**.

- 4) Install the middle roller bracket **4** using bolt **5** and nuts **8**, as shown in **Figure 2**.
- 5) Install the middle roller **3** using one bolt **6**, one spacer **1**, and one nut **9** as show in **Figure 2** to the desired height.



- 8) Place the LH anti-scalp bracket 1.0" away from the deck lift bracket and adjacent to the deck top. Mark and drill (2) 13/32" diameter holes through the outer deck wall as shown in **Figure 3**.
- 9) Mount the LH bracket **2**, using bolts **7** and nuts **9**.
- 10) Install the middle roller using one bolt **6**, one spacer **1**, and one nut **9** as show in **Figure 2** to the desired height.

KIT PARTS LIST

ITEM	PART NO.	DESCRIPTION	QTY
1	2720685	SPACER	2
2	2721315.7	BRKT-ROLLER LH	1
3	2721512	ROLLER-5X2.75 CNTRD	2
4	4164360.7	BRKT-ROLLER MIDDLE	1
5	64123-15	BOLT-HEX 3/8-16X3/4	2
6	64123-217	BOLT-HEX 3/8-16X4-1/4	2
7	64123-50	BOLT-HEX 3/8-16X1	2
8	64141-4	NUT-WLF 3/8-16	2
9	64229-03	LOCKNUT-NYLON 3/8-16	4

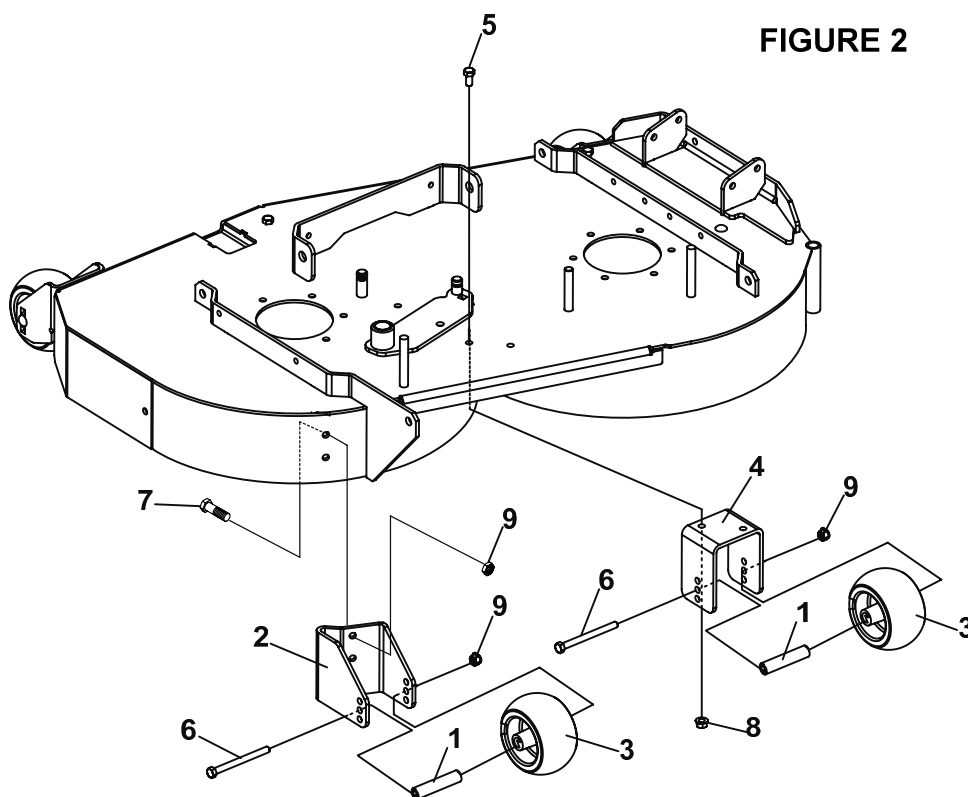


FIGURE 2

