

Service Bulletin

Date: 8/11/2008

Product Type: KAWASAKI 37hp with 61" deck

Bulletin No: JC-018-08

Possible wrong Pulley & Wrong Governor setting

ISSUE: We have found there is the possibility that some 61" decks on the 37hp units could have the wrong center (driven) pulley on the deck. Also the governor setting could be @ 3600 RPM rather than the required 3500 RPM that was specified on this engine. The percentages are pretty small but none the less we have confirmed that it definitely has happened. Unfortunately due to the nature of how both events occurred, we do not have a serial number range of questionable units. But we do know that starting serial # 642246-00137 and 942246-00380 or higher, they are definitely correct.

CORRECTION: Look at the following pictures for detailed explanation. But in a short description; **Silver** pulley **is correct**, a **black** pulley **is wrong**. Also **3600 RPM** is **wrong** for this unit; **3500 RPM is the required setting**.

ACTION REQUIRED: FIRST - If a black pulley is encountered, replace it with a silver pulley (2308140), 3 washers between pulleys (64163-64), 2 keys (64164-12) and PTO belt 2188134 will also need to be installed. You can also opt to cut the existing key in half (washers are not notched for key to pass through).

SECOND - Verify the Governor setting. The engine should be @ 3500 RPM

PARTS INVOLVED: WRONG 7" PULLEY (**black**) = 4130120

CORRECT 5.8" PULLEY (**silver**) = 2308140

Washers = (qty 3) 64163-64 Key = (qty 2) 64164-12 Belt = 2188134

PRODUCTS INVOLVED: 942246E BOB-CAT and 642246E BUNTON

WARRANTY: .8hr for pulley & belt. .3hr for governor setting

If you have any questions please contact Commercial Grounds Care, Inc.
Customer Service Department @ 920-699-2000

This bulletin is relevant to the departments shown below. Please circulate as appropriate.

SERVICE ☒

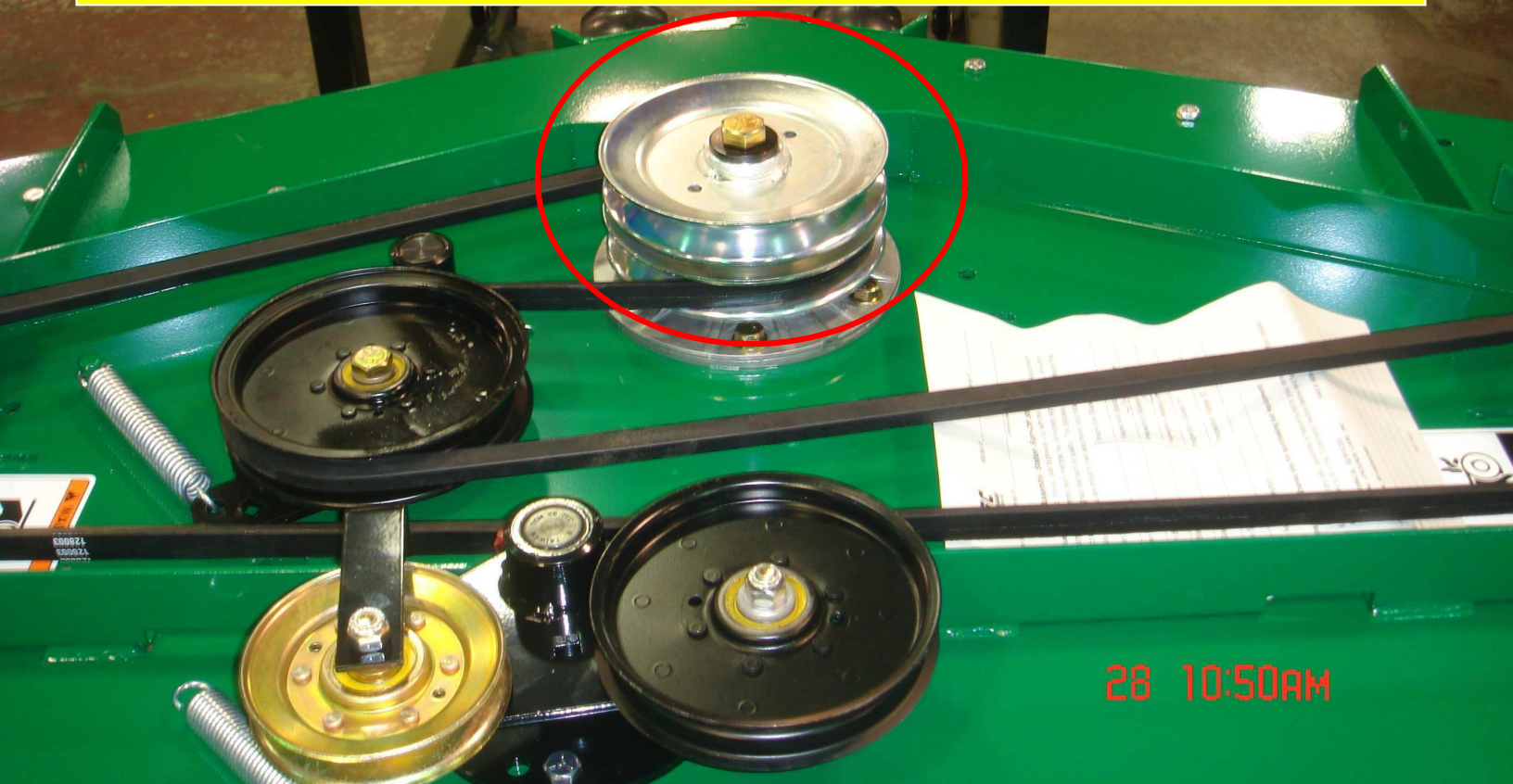
WARRANTY ☒

SALES ☐

PARTS ☒



**THIS IS THE CORRECT PULLEY SET-UP
JUST VERIFY ENGINE RPM @ 3500 IF YOU SEE THIS PULLEY**





THIS IS THE WRONG PULLEY
REMOVE AND REPLACE WITH 2308140 Pulley
3 of 64163-64 washer (placed between pulleys)
2 of 64164-12 key (or you may simply cut existing key in half)
AND PTO Belt 2188134

Periodic Maintenance Procedures

Bulletin JC-018-08

Page 4

Copyright of Kawasaki

Fuel System

NOTE

○High and low idle speeds may vary depending on the equipment on which the engine is used. Refer to the equipment specification.

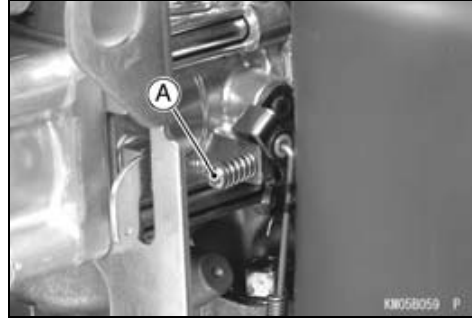
Low Idle Speed Adjustment

- Disconnect all possible external loads from the engine.
- Start and warm up the engine thoroughly.

⚠ WARNING

Always keep your hands clear of the moving parts.

- Move the throttle lever at a dash to the idle position.
- Hold the throttle lever on the carburetor in closed position (turn the governor arm clockwise all the way) and adjust the low idle speed screw [A] until the engine idles at



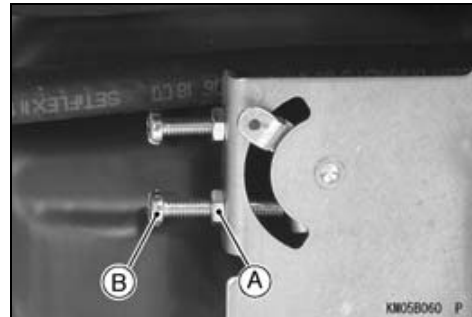
YOU WILL NOT NEED TO ADJUST LOW SPEED SETTING

Low Idle Speed (Carburetor idle rpm)
1 450 rpm

- Release the throttle lever.
- Loosen the locknut [A].
- Adjust the low idle speed set screw [B] on the control plate to obtain the specified governor low idle speed.

Low Idle Speed (Governor idle rpm)
1 550 rpm

- Tighten the locknut.



High Idle Speed Adjustment

(Do not be thrown by the word "HIGH IDLE"
It still means Max High Speed setting)

NOTE

○High idle speed adjustment should be made after the idle speed adjustment is performed.

CAUTION

Do not adjust high idle speed with the air cleaner removed.

- Start and warm up the engine thoroughly.

2-8 PERIODIC MAINTENANCE

Periodic Maintenance Procedures

⚠ WARNING

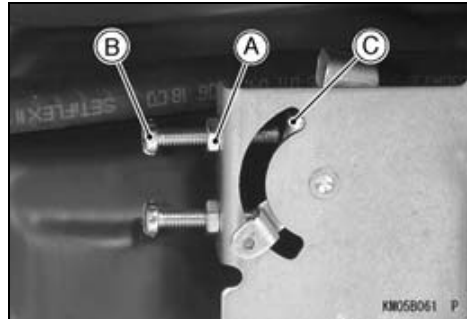
Always keep your hands clear of the moving parts.

- Loosen the locknut [A], and unscrew the high idle set screw [B] few turns.
- Move the throttle lever on dash to obtain the specified high idle speed and leave it there.

High Idle Speed

3500 RPM

- Turn the high idle set screw [B] so that the end of it just touches the speed control lever [C], and tighten the lock nut [A].
- Check the idle speed, and readjust the idle speed if necessary.



CAUTION

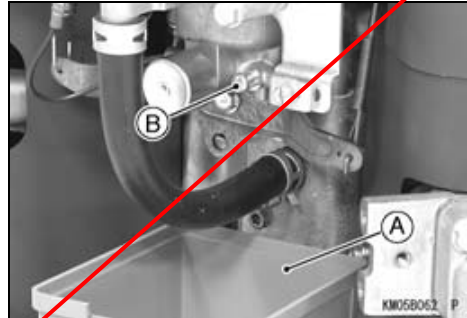
Be sure to make the idle and fast idle speeds respectively correspond to those of the equipment.

Fuel System Cleanliness Inspection

⚠ WARNING

Gasoline is extremely flammable and can be explosive under certain conditions. Turn the ignition switch OFF. Do not smoke. Make sure the area is well ventilated and free from any source of flame or sparks; this includes any appliance with a pilot light.

- Place a suitable container [A] under the drain screw [B] on the carburetor.
- Turn out the drain screw a few turns to drain the carburetor and carburetor.
- Tighten the
- If any water or dirt is found, clean the carburetor (see Carburetor Cleaning in the Fuel System chapter) and fuel tank. And check the fuel filter.



NOT APPLICABLE TO THIS BULLETIN

Element Cleaning and Inspection

Air cleaner elements are not recommended to be cleaned, and each air cleaner element should be replaced with new ones at the maintenance time as shown in the maintenance chart.

NOTE

Operating in dusty condition may require more frequent maintenance than above.

- Remove the elements (see Element Removal in the Fuel System chapter).
- Replace the primary element [A] every 250 hrs.

