

Service Bulletin

Date: 8/15/2008
Bulletin No: JC-021-08

Product Type: BOB-CAT & BUNTON “E” series ZT200’s

Deck Lift Lever – In line Production Change

ISSUE: Some of the current “E” series Full Size ZT200 units incorporated a single piece deck Lift arm. This part was particularly susceptible to shipping damage. So to avoid any unnecessary frustration we simply reinstated the previous 2 piece lift arm.

CORRECTION: N/A

ACTION REQUIRED: In the event you experience one of these getting damaged or needing replacement for any other reason in the future, simply order the two piece components. The parts illustrations on our web site show the two piece lift handle so it should be straight forward to locate the needed parts. In the event a customer has the original book showing the one piece Lift Handle, you will need to make note of the change.

PART INVOLVED: **4162903.7** Use 1 each of 2720501.7 and 2720551.7 (levers) and 2 each of A1104057 (bolt) and 64237-03 (nut). You can record this as a supersede in your system.

PRODUCTS INVOLVED: BOB-CAT & BUNTON E series ZT200’s

WARRANTY: N/A

If you have any questions please contact Commercial Grounds Care, Inc.
Customer Service Department @ 920-699-2000

This bulletin is relevant to the departments shown below. Please circulate as appropriate.

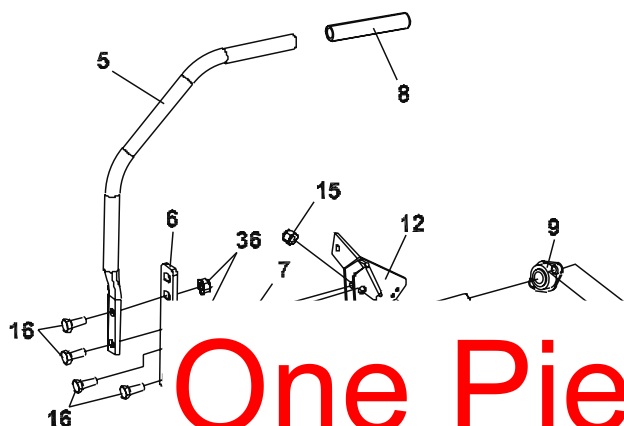
SERVICE ☒ WARRANTY ☐ SALES ☐ PARTS ☒



STEERING/DECK LIFT

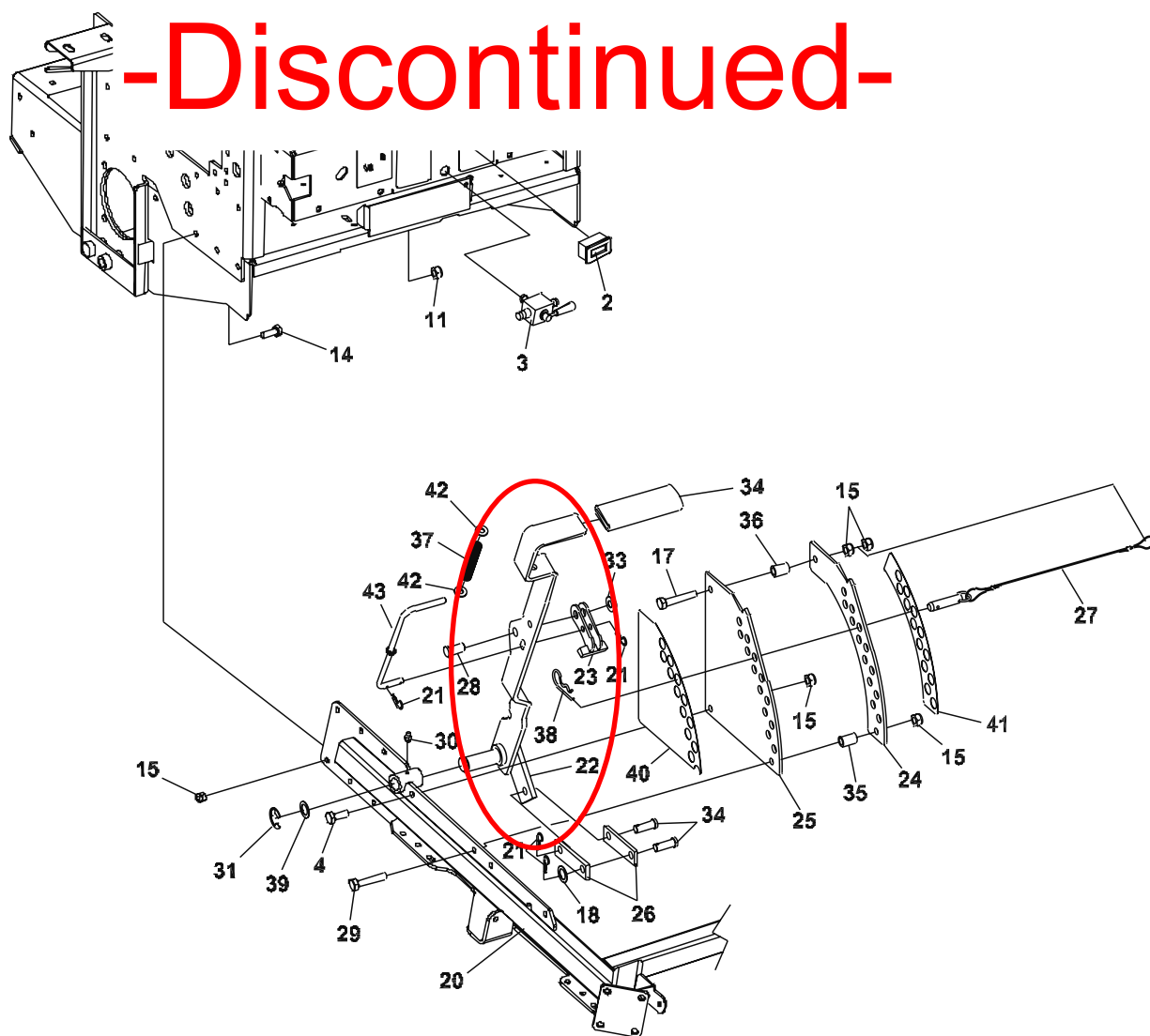
PREDATOR-PRO SERIES

FIGURE 13



One Piece Style

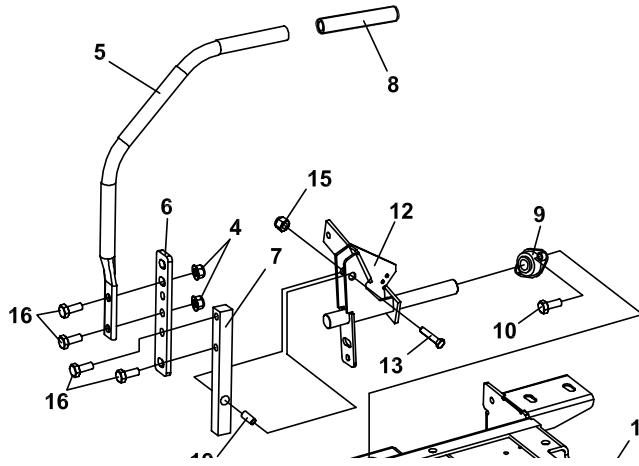
-Discontinued-



STEERING/DECK LIFT

**ZT 200
Series**

FIGURE 12



TWO PIECE STYLE
-Current-

