



One BOB-CAT Lane, P.O. Box 469
Johnson Creek, WI 53038 U.S.A.
(920) 699 2000
Fax: (920) 699 6836

Service Bulletin

Date: October 2, 2014

Bulletin No: JC-022-12REV1B **Updated to include kit for 72" Non-Generac Units** (highlighted in yellow below)

Product Type: G, H & J series Predator and Predator Pro

Customer Issue: Premature deck belt failure. (Belt failing in the initial 100 hours of use.)

Cause: Idler spring tension too high, clutch engagement too abrupt.

Action Required: For units that experience premature belt failure, install idler belt kit **970488** for 52" units, **970497** for Generac powered 61" units, **970481** for all other 61" units and **970510** for non-Generac powered 72" units. (It may be required to send failed belt back to the factory for warranty approval.)

This kit will include:

- 1 revised idler assembly with fixed belt guide
- 1 Stronger cord belt (27% higher tensile strength than original belt). **Note:** Unlike the other previously released kits, the belt in the 72" kit (4170172) is shorter than the original belt (4165645).
- 1 lighter tensioned spring (this is the same spring 4168493 with the yellow stripe issued earlier)
- 1 newly programmed soft start clutch module with harness (even if the unit already has a soft start clutch module on it, you will still need to install the new one)
- 1 new spring anchoring plate as adjusting the spring tension is critical to long belt life.

See attached instructions below for details as to the installation.

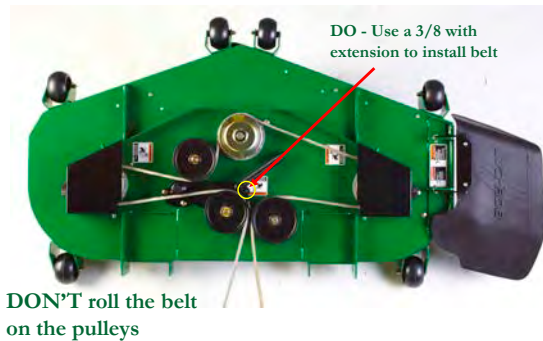
IMPORTANT: Do **NOT** roll the belt on to the pulleys. You **MUST** put a 3/8" drive breaker bar in the square hole of the idler arm to pull against the spring to allow installing the belt without having to roll it on.

CLARIFICATION: If you roll a belt on a pulley when it has a lot of tension, as in this application, it fractures the cords inside the belt. Therefore belt life will be greatly reduced as a direct result of this damage.



One BOB-CAT Lane, P.O. Box 469
Johnson Creek, WI 53038 U.S.A.
(920) 699 2000
Fax: (920) 699 6836

Deck – Do's and Don'ts



 **SCHILLER** GROUNDWORK CARE

Products Involved: All 9425xxG, all 9425xxH and 9425xxJ up to the serial numbers listed below: (xx represents any two numbers)

Note: It is possible to have a “J” model serial number lower than these listed serial numbers that is already updated due to random units that were still at the factory being updated before they shipped (these units have a fluorescent label on the serial tag of the crate). But anything above these serial numbers has definitely been updated.

Model	Last affected Serial
942501J	94250101320
942502J	94250201349
942504J	94250401538
942505J	94250500100
942507J	94250701206
942509J	94250900221
942510J	94251000208
942511J	94251100206
942514J	94251401111
942515J	94251500387
942516J	94251600296
942519J	94251900324
942520J	94252001239
942521J	94252101261
942523J	94252301296
942525J	94252500152
942526J	94252600205



One BOB-CAT Lane, P.O. Box 469
Johnson Creek, WI 53038 U.S.A.
(920) 699 2000
Fax: (920) 699 6836

Warranty: You may claim up to **1** hour of labor and the kit for units covered under this bulletin. Please file warranty using Service Bulletin Number JC-022-12REV1 with one unit per claim. If you have any questions, please contact our Customer Service Department at 920-699-2000.

This bulletin is relevant to the departments checked below. Please circulate as appropriate.

SERVICE

☒

WARRANTY

☒

SALES

☐

PARTS

☒

I.S.-KIT, IDLER REPLACEMENT ZT2 72" G & J SERIES (970510)

4170166 REV A

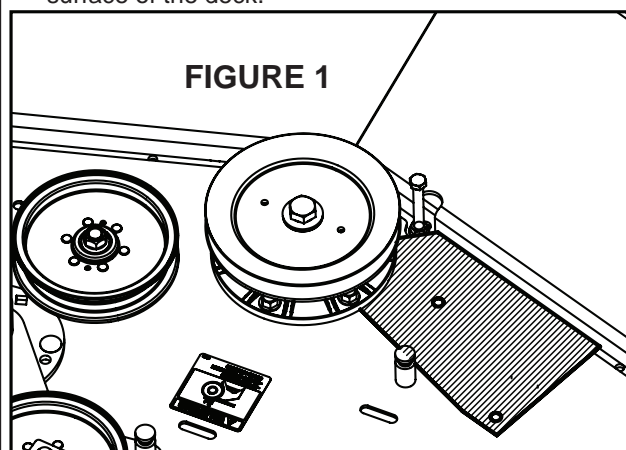
INTRODUCTION: This kit is intended to upgrade the 72" G and J series Predator Pro and ProCat non-Generac models for deck belt failure due to the idler spring tension being too high.

INSTRUCTIONS:

1. Park the machine on a smooth, level surface. Remove both belt covers from the cutterdeck. Unhook the spring from the idler arm assembly. Discard the spring. Remove the bolt securing the idler arm assembly to the deck. Discard the old idler arm assembly and belt. Save the bolt (18) as it will be reused in a later step.
2. Grease the idler pivot post to lubricate the seal during installation. Verify spacer (17), from your existing unit, is on pivot post. Install new idler arm assembly (2) on idler pivot post. Apply two drops of red thread locking compound on one M10 X 30 bolt (18) removed in step 1 and secure idler arm assembly to post. Install cap end (19). Grease the idler after assembly.
3. Cut out the supplied template (4170167). Orient it on the deck according to Figure 1. Use the template to mark the locations to drill two 3/8" holes for the idler spring mounting plate. Drill the holes.

CAUTION: BEWARE OF SHARP BLADES WHILE DOING STEPS 4 & 5

4. Install the idler spring mounting plate (20) to the top of the cutterdeck by lining up the holes in the plate and using two bolts (24) and two nuts (23). Install the bolts from the bottom up, with the nuts on the top surface of the deck.



5. Install the 5/16" flanged nut (6) to the eyebolt (22) to the end of the thread. Then insert the eyebolt thru the hole in the idler spring mounting plate, and start the 5/16" locknut (21) on eyebolt.

6. Connect the new tension spring (1) to the spring post on the idler arm (13) and to the eye bolt (22), then wrap the new belt (25) included in the idler sub assembly around the electric clutch pulley and the deck pulleys. Wrap the belt around the last pulley with a 3/8" ratchet extension and handle installed in the square hole on the idler arm for leverage.

7. While holding the eyebolt and the spring, tighten the lock-nut on the eyebolt until the distance between the outside of the spring post on the movable idler and the inside of the eyebolt is $10\frac{3}{4} \pm \frac{1}{8}$. Tighten flange nut to lock in setting. **NOTE:** The belt and spring must be installed per step 6 to do this step.

NOTE: Adjust the belt guides by the clutch to recommended 1/8" – 1/4" gap between the guide and the belts.

NOTE: After usage of the machine, the belt will seat into the pulleys, and reduce the length of spring. **DO NOT ADJUST THE EYEBOLT.** This is normal. If you do adjust the eyebolt, you will over tension the belt, greatly reducing the life of your belt.

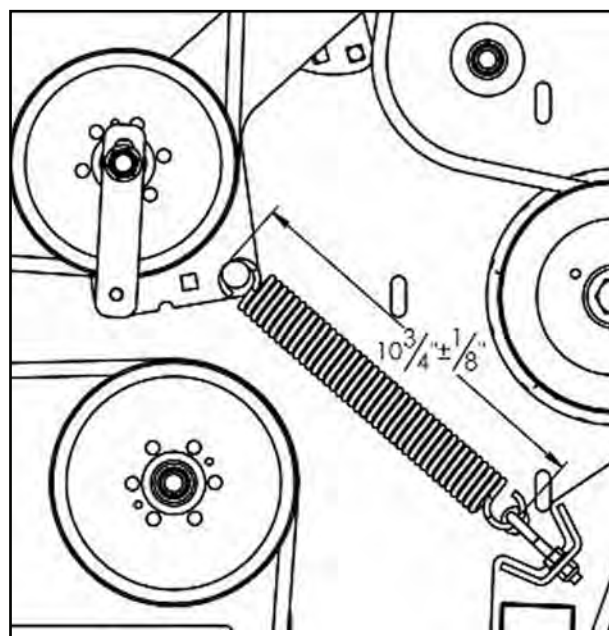
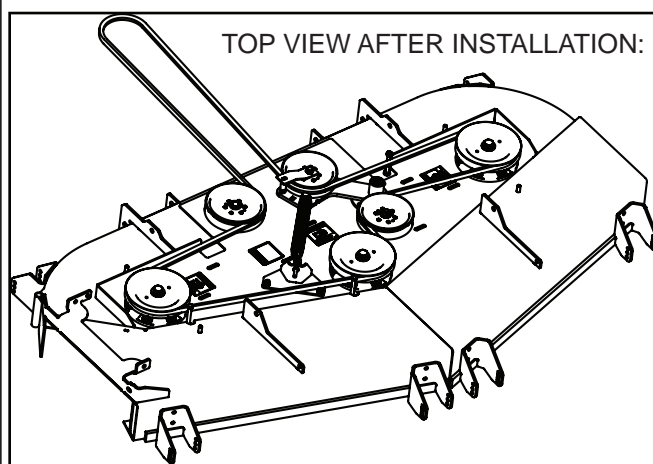
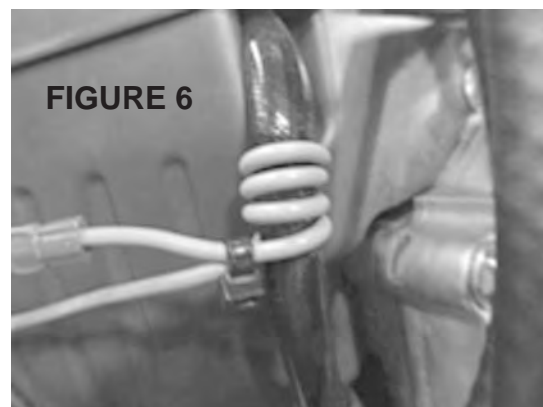
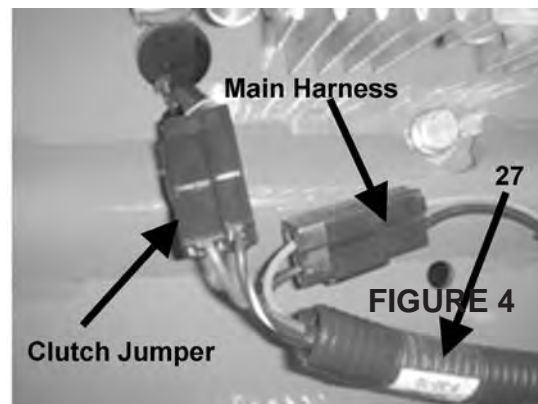
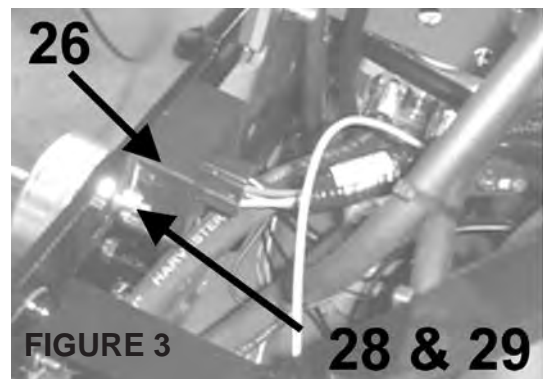


FIGURE 2

8. Re-install the belt covers with the hardware retained in Step 1.
9. Bolt the soft start module (26) to the left rear bumper support using the 8-32 machine screw and nylon lock nut (28) & (29). There are holes for the screws in the bumper strap. **Figure 3**

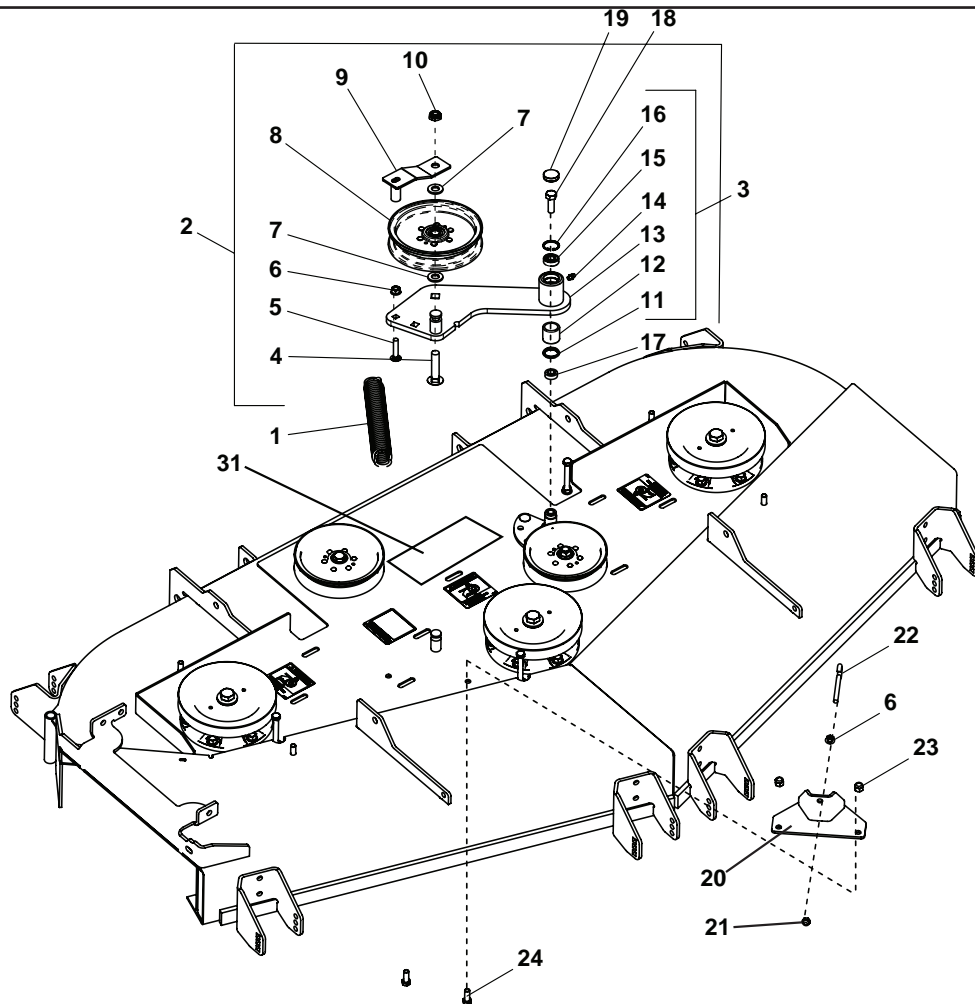
NOTE: If your machine has soft start already, change the soft start module to the one included in the kit.

10. Disconnect the clutch jumper cable from the main wire harness just in front of the engine.
11. Install the soft start harness (27) by inserting the side of the harness with 2 connectors between the main wire harness and the clutch jumper, and then the other end to the soft start module. **Figure 4**
12. Wrap the grey wire from the soft start module around the spark plug wire 4 complete coils. Zip tie (30) the wires as close to the loops as possible and cut the excess zip tie. **Figure 5 & 6**
13. Place label 31 on deck as shown in parts illustration.



I.S.-KIT, IDLER REPLACEMENT ZT2 72" G & J SERIES (970510)

4170166 REV A



ITEM	PART NO.	DESCRIPTION	QTY	ITEM	PART NO.	DESCRIPTION	QTY
1	4168493	SPRING-EXTENSION	1	17*	4163014	SPACER	1
2	4170157	ASSY-IDLER (INCLUDES ITEMS 4-16)	1	18*	64270-02	BLT-HEX M10-1.5x30 ISO CL10.9	1
3	4168886	ASSY-IDLER ARM (INCLUDES ITEM 11-16)	1	19	4128002	CAP-26 X 7 END	1
4	64018-45	BLT-CRG, 1/2-13 X 2-1/4	1	20	4170156.2	ASSY-IDLER SPRING, MTG	1
5	64018-34	BLT-CRG 5/16-18X1-1/2	1	21	64229-02	NUT-NYLON LOCK 5/16-18	1
6	64141-6	NUT-WLF 5/16-18	2	22	64158-11	EYE BOLT-5/16-18 X 3.61 W/GAP	1
7	64163-67	WASHER: .516 X 1.00 X .105	2	23	64229-03	NUT-NYLON LOCK 3/8-16	2
8	128169	PULLEY IDLER 5.50	1	24	64123-50	BLT-HEX 3/8-16X1	2
9	4168884.7	GUIDE-BELT, 5 1/2" IDLR PLLY	1	25*	4170172	BELT-DECK, 72IN	1
10	64151-37	NUT-HEX, 1/2-13 NYLN JAM	1	26*	4169459	MODULE-SOFT START	1
11	521438	GREASE SEAL	1	27*	4165923	HARNESS-SOFT START	1
12	548138	BRG NDL.88 1.12 1.00 OPEN END	1	28*	64229-09	NUT-NYLON LOCK 8-32	2
13	4168888.7	WLDMT-IDLER ARM	1	29*	64152-76	SCREW-MACHINE, 8-32 X 3/4	2
14	85010N	ZERK-1/4-28 STR SELF THREAD	1	30*	65286-3A	TIE-CABLE 5-5/8 BLACK	1
15	4128004	BEARING-BALL 10 X 26 X 8	1	31	4169712	DECAL-SPRING TENSION	1
16	64144-40	SNAP RING-26MM INTERNAL	1	ITEMS 17 & 18 ARE RETAINED AND REUSED FROM YOUR ORIGINAL UNIT.			
				*NOT ILLUSTRATED			