
INFORMATION BULLETIN

Date: 8-22-2008

Product Type: PARTS BULLETIN

REVISED Bulletin No: JC-023-08

Running Change to FastCat/Rocket Transaxle

ISSUE: Hydro-Gear has made a running change to the brake on the Transaxle we use on our Fastcat and Rocket models. This has actually been in production for almost a year but it was never an issue because both transaxles were still offered through Hydro-Gear. However they have discontinued offering the original configuration. **Units serial number 500 and lower**, that require a new transaxle will require a brake update kit in **Addition** to the transaxle. There is no performance difference in these two units, it's totally related to how the brake actuates.

ACTION REQUIRED: Currently we still have the 4142046 **LH** transaxle in stock but once that supply runs out you will have to purchase the new transaxle and the update kit to repair a unit that has serial number 500 or lower. The key here is check with your distributor, If they still have the RH transaxle or can order you the original LH transaxle, go that route because it's a direct fit and cheaper.

PARTS INVOLVED:

R.H. Original # 4142045 Use 4156465 with kit [970380](#) for serial #500 and below

L.H. Original #4142046 Use 4156464 with kit [970379](#) for serial #500 and below

Following is the revised page of the parts breakdown if you want to add this to your books.

If you have any questions please contact Commercial Grounds Care, Inc.
Customer Service Department @ 920-699-2000

This bulletin is relevant to the departments shown below. Please circulate as appropriate.

SERVICE



WARRANTY



SALES



PARTS



FIGURE 2

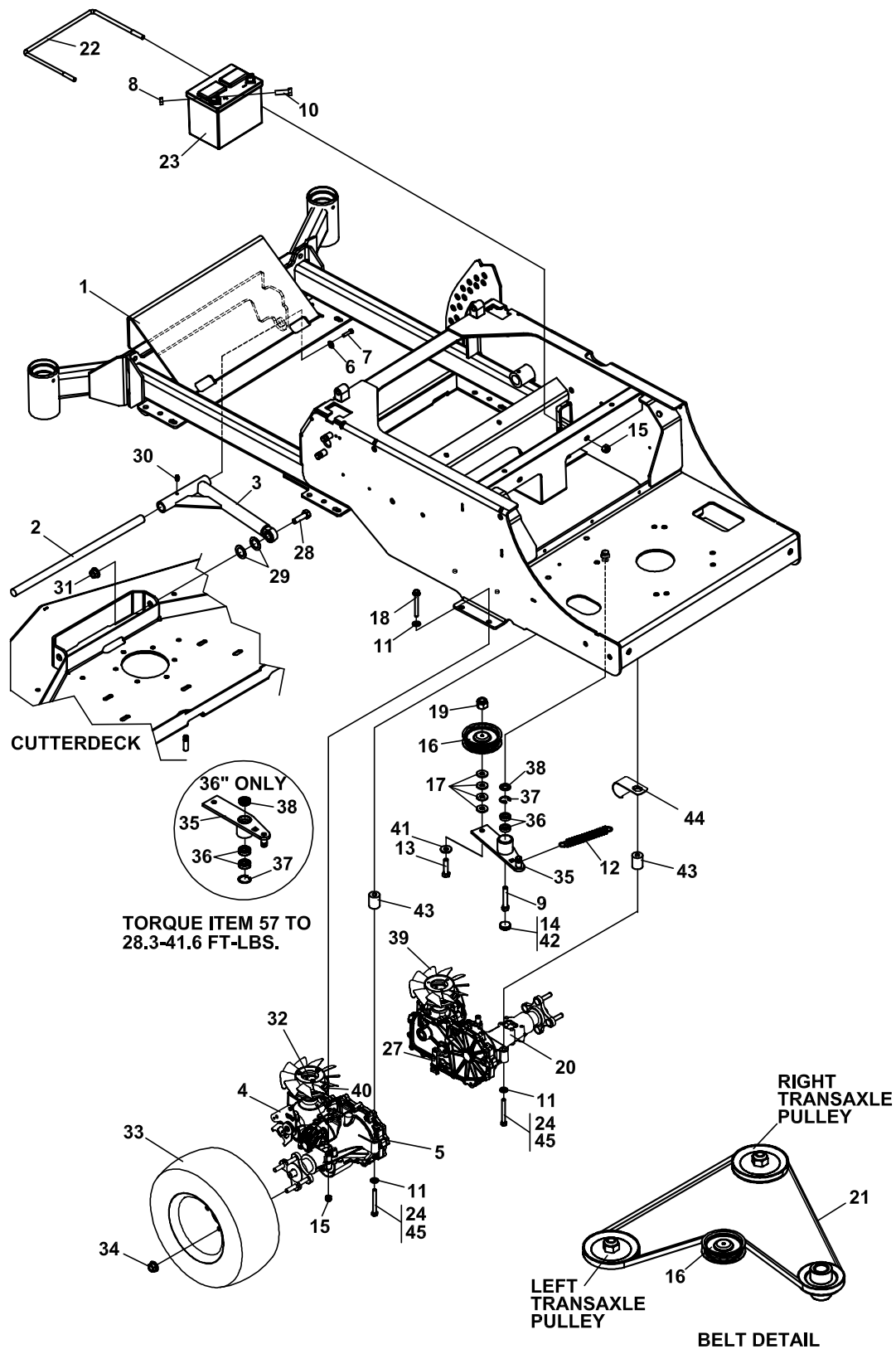


FIGURE 2

ITM	PART NO.	DESCRIPTION	QTY	ITM	PART NO.	DESCRIPTION	QTY
1	4146816	S-FRAME W/LABELS	1			(USED ON 42", 48" DECKS ONLY)	
2	4155842	SHAFT-PULLARM MOUNT	1	4142092	TIRE-ASSY 18 X 6.50 - 8		2
3	4143558.7	WLDMT-PULL ARM	2			(USED ON 36" DECKS ONLY)	
4	4142045-03	ARM-CONTROL	2	4155841	TIRE-ASSY 20 X10-10		2
5	4156464	LH Transaxle - Serial 501 and higher (does NOT require 970380 kit) Transaxle includes 4, 25, 26, 27, 32, 39, & 40 Also Order 970379 Brake linkage update kit in addition to transaxle f/units serial 500 and lower				(USED ON 52" DECKS ONLY)	
6	64163-29	WASHER	2	34	64187-03	WHEEL NUT 1/2-20	8
7	64123-68	BOLT-HEX 5/16-18X1	2	35	4133302	S-ASSY-IDLER ARM PUMP	1
8	64025-02	NUT-HEX 5/16-18	2	4147276	ASSY-IDLER ARM		1
9	64270-01	BOLT-MET, HEX M10-1.5x30	1			(USED ON 36" ONLY)	
10	64123-54	BOLT, 5/16-18X3/4 HEX	2			(INCLUDES ITEMS 36-38)	
11	64163-55	WASHER .328X.75X14 GA	10	36	4128004	BEARING-BALL 10X26X8	2
12	38219	SPRING-TENSION	1	37	64144-40	SNAP RING-26MM INTERNAL	1
13	64123-67	BLT-HEX 3/8-16 X 2	1	38	4128000	SEAL-16X26X7	1
14	4128001	END CAP-24 X 7	1	4127999	SEAL-16X24X7		1
15	64268-02	NUT-FL NYLON LOCK 5/16-18	10			(USED ON 36" MODELS ONLY)	
16	2228016	PULLEY-IDLER PUMP	1	39	4163055	FAN-TRANSAXLE	2
17	64163-31	WASHER, 25/64X1X12	4	40	4142045-01	PULLEY-TRANSAXLE	2
18	64123-55	BLT-HEX 5/16-18X3	4	41	64163-61	WASHER	1
19	64229-03	LOCKNUT-NYLON 3/8-16	1			(NOT USED ON 36" MODELS)	
20	4156465	RH Transaxle - Serial 501 and higher (does NOT require 970379 kit) Transaxle includes 4, 25, 26, 27, 32, 39 & 40 Also Order 970380 Brake Linkage Update Kit in addition to transaxle f/units serial 500 and lower	1	42	4128002	CAP-END	1
21	4143636	BELT-TRANSAXLE	1			(USED ON 36" MODELS ONLY)	
22	4143570	ROD-BATTERY CLAMP	2	43	4144646	SPACER	4
23		BATTERY (OBTAIN LOCALLY)	1			(USED ON 36" MODELS ONLY)	
24	64123-12	BLT-HEX 5/16-18X2-1/2	4	44	48228-11	CLIP-CABLE, INSULATED	1
25*	4142045-06	FILTER-TRANSAXLE	2			(USED ON 36" MODELS ONLY)	
26*	4142045-04	SPRING-CONTROL ARM	2	45	64123-201	BOLT-5/16-18 X 3 3/4 LG4	
27	4142045-05	ARM-BRAKE	2			(USED ON 36" MODELS ONLY)	
28	64123-168	BLT-HEX 5/8-11X2-1/2	2				
29	64163-73	WSHR-.625IDX1.12ODX.062	4				
30	85010N	ZERK, 1/4-28	4				
31	64229-06	LOCKNUT, NYLON 5/8-11	2				
32*	4142045-02	NUT-PULLEY	2				
33	4142752	TIRE-ASSY 20 X 8 - 10 4 PLY	2				
		4142752-01 is 20x8x10 Tire Only					
		4132433-02 is Rim Only for 20x8x10 assy					
		4132433-01 is 20x10x10 Tire Only					
		4155841 is a 20x10x10 tire & Rim Assy					

* NOT ILLUSTRATED