



One BOB-CAT Lane, P.O. Box 469
Johnson Creek, WI 53038 U.S.A.
(920) 699 2000
Fax: (920) 699 6836

SERVICE BULLETIN

FastCat deck Idler/spindle pulley Update

Date: January 11, 2013

Bulletin No: JC-13-08

Product Type: FastCat 52" models 942299 & 942315 ending in letter "H"

Customer Issue: Throwing the PTO belt operating at 2 inch cut of height or less.

Cause: Sharp angle of belt going from deck to engine combined with load can cause belt to jump off idler pulleys or clutch pulley.

Action Required: Install kit **970455**. This kit remedies belt drive angle from clutch pulley to idler pulleys. See following instruction sheet as to details of kit installation. **IMPORTANT** – All orders for this kit **MUST** be submitted through your normal whole goods channel and not service parts.

Products Involved: Models: 942299H prior to serial 02499 and 942315H prior to serial 00899

Warranty: This is a fix-as-fails update. You may claim up to 2 hours of labor and parts for units covered under this bulletin. Please file warranty using Service Bulletin Number JC-13-08 with one unit per claim.

If you have any questions, please contact our Technical Service Department at 920-699-2000.

This bulletin is relevant to the departments checked below. Please circulate as appropriate.

SERVICE

☒

WARRANTY

☒

SALES

☐

PARTS

☒

Make Your Move™

INTRODUCTION: This instruction sheet covers the installation of the 52" cutterdeck idler replacement for Model 942299H & 942315 H series FastCats.

ASSEMBLY INSTRUCTIONS:

Refer to parts illustration **Figure 5** on **Page 4** and parts list on **page 5**.

1. Park the machine on a smooth, level surface. Remove and discard both belt covers from the cutterdeck. Retain the hardware for later use. Roll the belt off one of the deck pulleys and remove the belt from the electric clutch. Discard belt.
2. Lower the deck onto some blocks and disconnect the nuts **A**, bolts **B**, and hanger chains **C** from front and rear deck lift rockers. Retain for later use. Disconnect the pull arms from the deck. Open the dump valves by pulling the rods back and locking the bulge in the dump valve in the key hole slot. Lift the front of the machine and roll it back to expose the deck top.
3. Remove the two e-clips **E** and four washers **F** from each side of the rear decklift rocker. Remove the e-clip **D** on the decklift lever's link. Discard hardware.. **Figure 1**
4. Remove the eight nuts **G**, bolts **H** and brackets **J** that hold the rear decklift rocker to the frame. Discard the nuts. **Figure 1**
5. Install new rear decklift rocker **39** using the nuts **G**, bolts **H**, and brackets **J** that were previously removed. **Figure 1** Ensure the longer leg of **J** is toward the rear of the machine.
6. Reinstall the e-clip **D** on the decklift lever's link. Intall the four washers **41** and two e-clips **40** on each side of the new rear decklift rocker. **Figure 1**

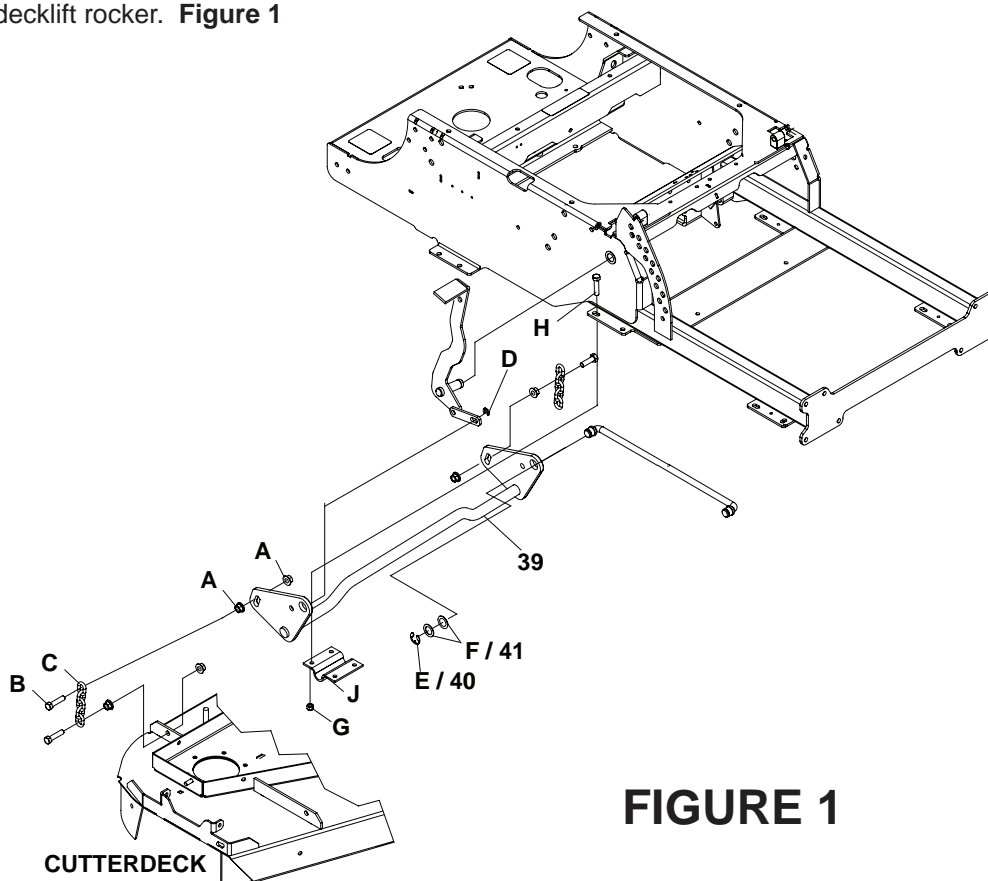
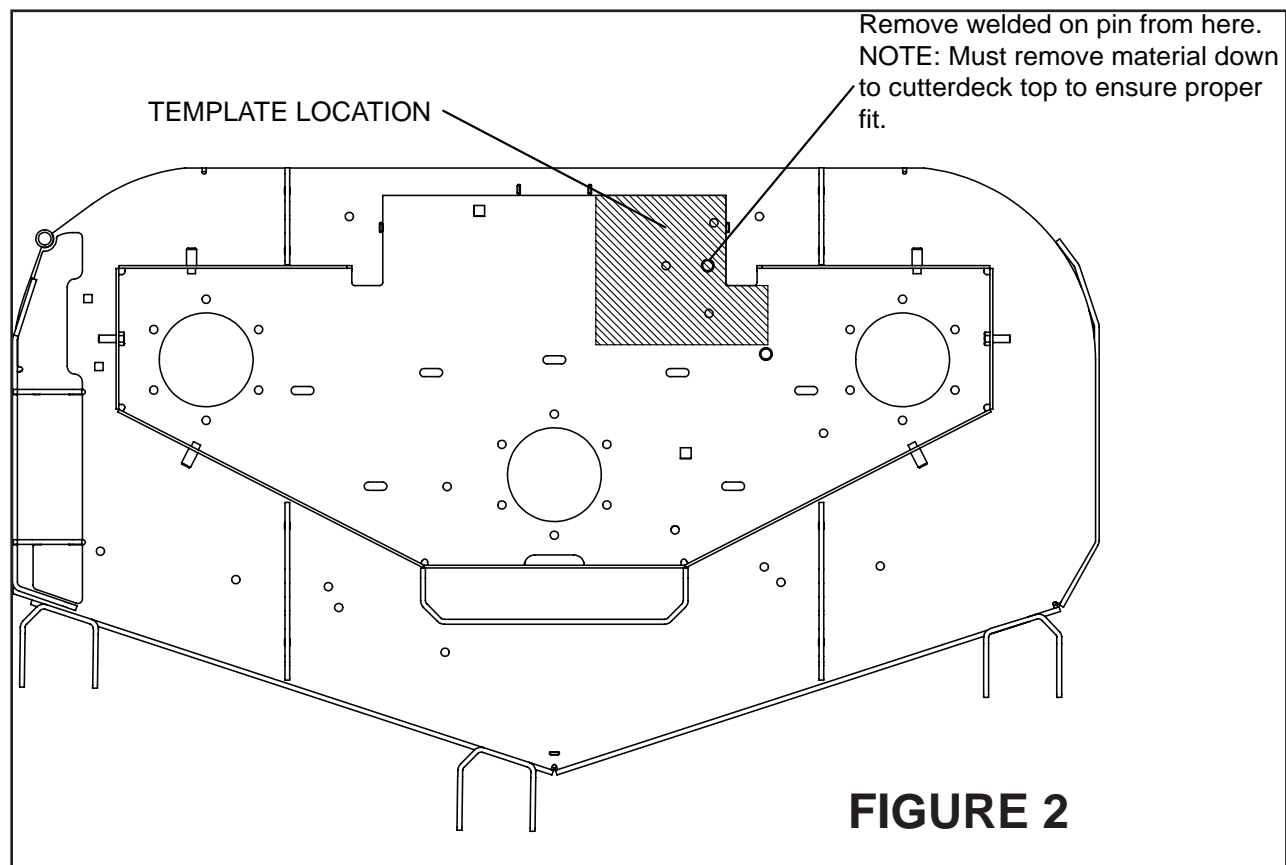


FIGURE 1

7. Pop the seal out of the movable idler pivot. Unhook the spring from the idler arm assembly. Keep the spring. Remove the bolt securing the idler arm assembly to the deck. Discard the bolt and the old idler arm assembly.
8. Remove the idler pivot post from the deck by grinding the weld off flush with the deck top. See **Figure 2** for pin location.
9. Cut out the supplied template **(35)** and use it to mark the locations to drill three 3/8" holes for the new idler pin weldment. Drill the holes. **FIGURE 2** Install the new idler pin weldment **(5)** using three 3/8 X 1-1/4 carriage bolts **(28)** and three 3/8 nylon lock nuts **(33)**.



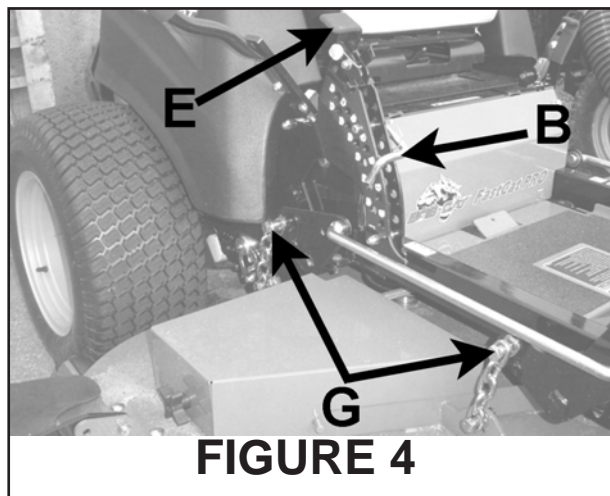
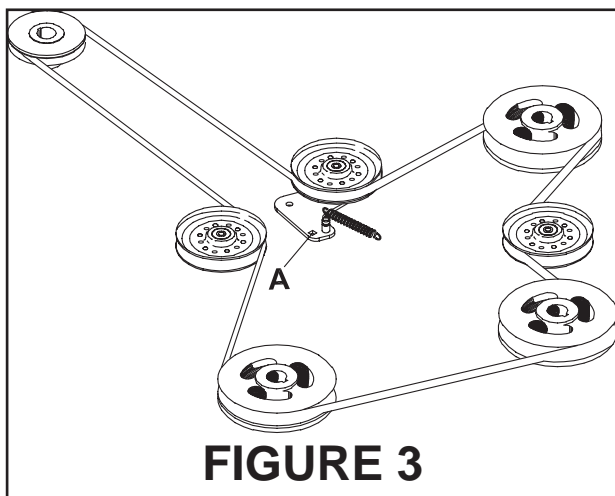
10. Remove the two idler pulleys. Discard the bolts, nuts, and spacers. Reinstall each idler pulley with one 1/2 X 4 carriage bolt (27), one thick washer (31), two spacers (4), the existing idler pulley, and one 1/2 flanged nylon lock nut (8) each. Make sure the spacer on the idler pulleys is facing down toward the deck.
11. Remove and discard the three blade spindle pulleys, bolts, conical washers, and spacers. Replace with one taller pulley (6), one new conical washer (32), and one 5/8 X 2-1/2 fine thread bolt (30) for each spindle. Tighten the bolts to 80-100 ft. lbs. or until the conical washer is flat.
12. Install the pull arm extension bracket (7) with two 5/8 X 1-1/2 bolts (29) and two 5/8 nylon lock nuts (34).
13. Grease the idler pivot post to lubricate the seal during installation. Verify inner ring (3) is on the idler pivot post. Place spacer (2) on pivot post. Install new idler arm assembly (11) on idler pivot post. Apply two drops of red thread locking compound on one M10 X 30 bolt (9) and secure idler arm assembly to post. Install cap end (1). Grease the idler after assembly.
14. Reinstall the deck under the power unit with the nuts A, bolts B, and chains C removed in Step 2. Connect the pull arms to the new pull arm extension bracket. Reconnect the hanger chains leave hardware loose for deck leveling..
15. Connect the retained tension spring then wrap the new belt (10) included in the idler sub assembly around the electric clutch pulley and the deck pulleys. Wrap the belt around the last pulley with a 3/8" ratchet extension and handle installed in the square hole A on the idler arm for leverage. **FIGURE 3** Install the belt covers (37 & 38) with the hardware retained in Step 1..

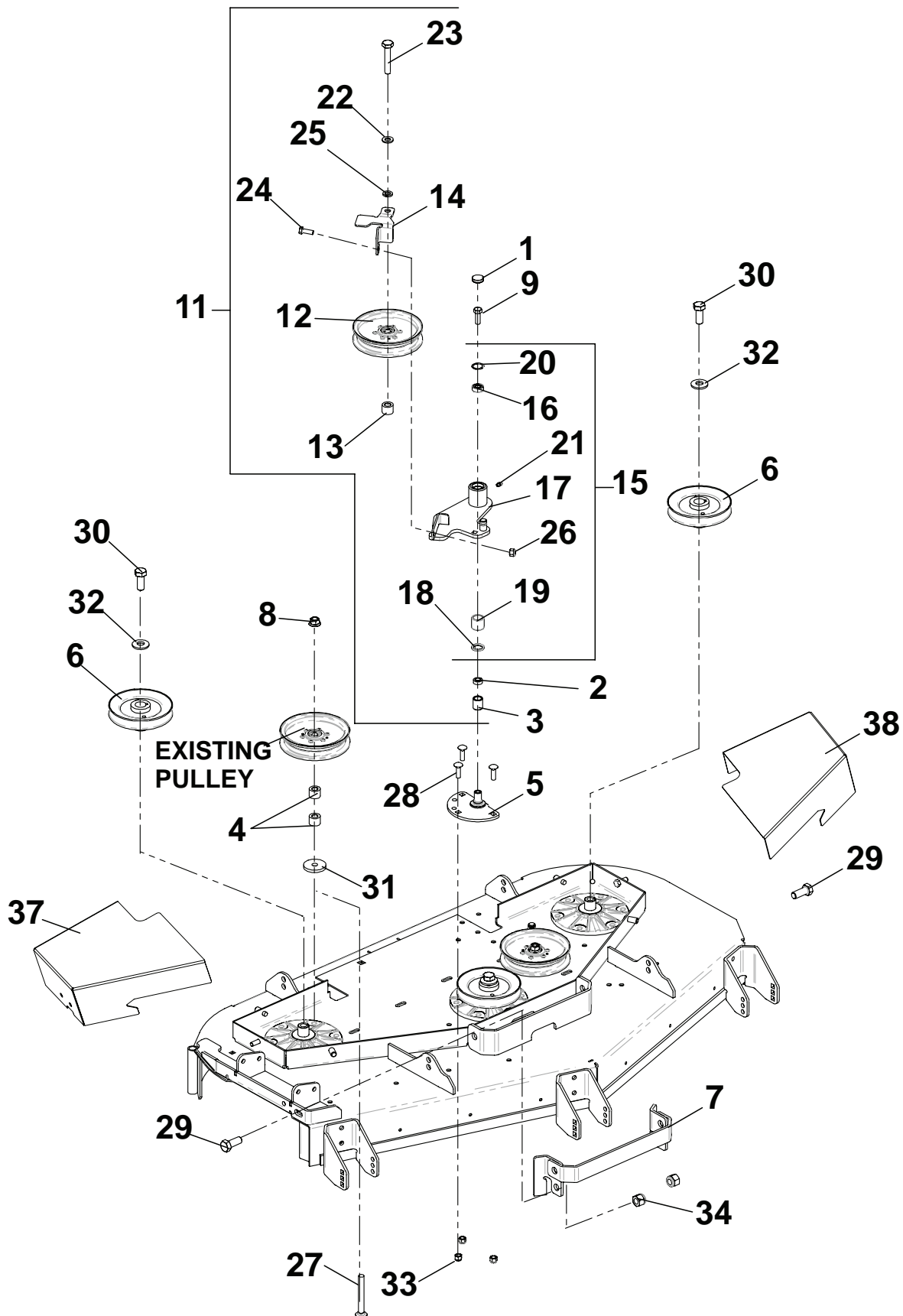
TO LEVEL THE DECK: FIGURE 4

1. Park the machine on a smooth, level surface. Raise the deck to the transport position.
2. Lower the deck onto a set of equal height blocks under the rear corners of the deck. Place another set of blocks under the front of the deck. Adjust 1/8" forward for best horsepower, level for best quality of cut, and 1/8" rearward for best striping.

NOTE: The front and rear of the deck are at different heights.

3. Measure the height of the blade cutting edge above the ground. Remove pin B and set the height of cut lever E to that height.
4. Move the bolts to remove slack in the chain. Tighten nuts on bolts G.





SERVICE PARTS LIST

ITEM	PART NO.	DESCRIPTION	QTY
1	4128002	CAP-26 X 7 END	1
2	4163014	SPACER-1.0X.516X1-15/16	1
3	4163155	INNER RING	1
4	113086	SPACER-1.0X.516X1-15/16	4
5	4168509.7	WLDMT-IDLER PIN	1
6	4168371	SHEAVE-	3
7	4168431.2	WLDMT-PULL BRKT EXTNSN	1
8	64268-05	NUT-FL NYLON LOCK 1/2-13	2
9	64270-02	BLT-HEX M10-1.5x30	1
10*	4168470	BELT-52IN DECK	1
11	4168602	ASSY-IDLER	1
(INCLUDES ITEMS 10, 12 - 26)			
12	128169	PULLEY IDLER 5.50	1
13	113086	SPACER-1.0X.516X1-15/16	1
14	4168594.7	GUIDE-BELT 52 IDLER	1
15	4168592	ASSY-IDLER ARM	1
(INCLUDES ITEMS 16-21)			
16	4128004	BEARING-BALL 10 X 26 X 8	1
17	4168593.7	WLDMT-IDLER ARM	1
18	521438	GREASE SEAL	1
19	548138	BRG NDL.88 1.12 1.00 OPN END	1
20	64144-40	SNAP RING-26MM INTERNAL	1
21	85010N	ZERK 1/4-28 STR SLF THRD	1
22	64006-05	LOCKWSHR-1/2 HELICAL	1
23	64123-305	BLT-HEX 1/2-20X3	1
24	64123-50	BLT-HEX 3/8-16X1	1
25	64163-67	WSHR-.516X1X12GA	2
26	64229-03	NUT-NYLON LOCK 3/8-16	1
27	64018-21	BLT-CRG 1/2-13X4	2
28	64018-7	BLT-CRG 3/8-16X1-1/4	3
29	64123-109	BLT-HEX 5/8-11X1-1/2	2
30	64123-108	BLT-HEX 5/8-18X2-1/2	3
31	64163-74	WSHR-.516IDX2.00ODX.250	2
32	64209-03	SPRING WASHER.67 ID	3
33	64229-03	NUT-NYLON LOCK 3/8-16	11
34	64229-06	NUT-NYLON LOCK 5/8-11	2
35	4168449	TEMPLATE-52" DECK KIT	1
36	4168617	I.S.-52" DECK H&J, KIT 970447	1
37	4168494.2	COVER-BELT 52 RH	1
38	4168495.2	COVER-BELT 52 LH	1
39	4168533.7	WLDMT-DECKLIFT, REAR	1
40	64221-04	E-RING	2
41	64163-65	WSHR-.890X1.375X18GA	4

*** NOT ILLUSTRATED**