



One BOB-CAT Lane, P.O. Box 469  
Johnson Creek, WI 53038 U.S.A.  
(920) 699 2000  
Fax: (920) 699 6836

## Service Bulletin

**Date:** February 13, 2014

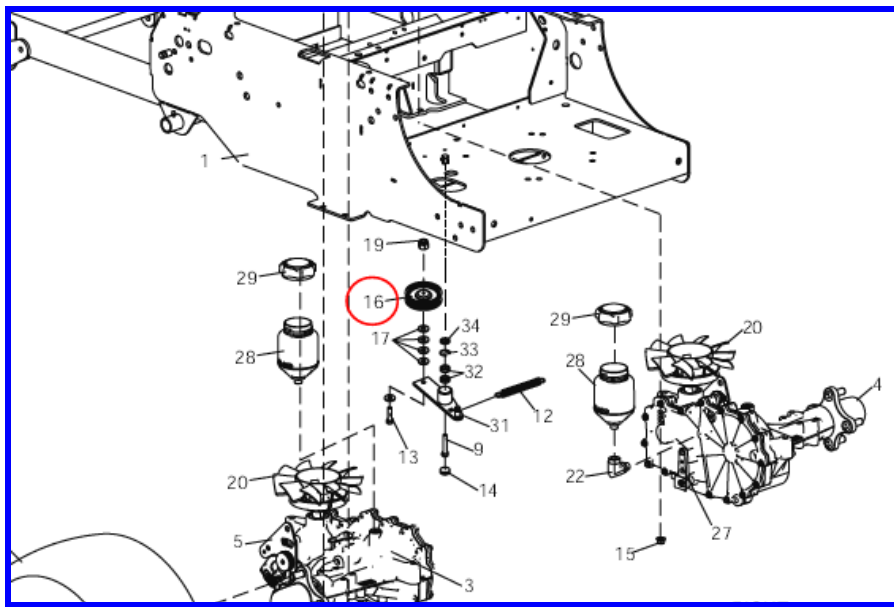
**Bulletin No:** JC-13-20

**Product Type:** CRZ Mowers

**Customer Issue:** Loss of drive

**Cause:** Premature failure of Pump Idler (bearing fails)

**Action Required:** Replace original Nylon Idler (part # 4168218) with metal Idler (part #2228016). Also supersede 4168218 to 2228016 in your parts department.



**Products Involved:** Model 942600 below serial 942600**00754**  
Model 942601 below serial 942601**00934**  
Model 942602 below serial 942602**00318**

**Warranty:** You may claim up to .3 hour of labor and parts for units covered under this bulletin. Please file warranty using labor code JC-13-20 with one unit per claim.

If you have any questions, please contact our Customer Service Department at 920-699-2000. This bulletin is relevant to the departments checked below. Please circulate as appropriate.

SERVICE



WARRANTY



SALES



PARTS

