



One BOB-CAT Lane, P.O. Box 469
Johnson Creek, WI 53038 U.S.A.
(920) 699 2000
Fax: (920) 699 6836

TX/OK Dealer Service Bulletin

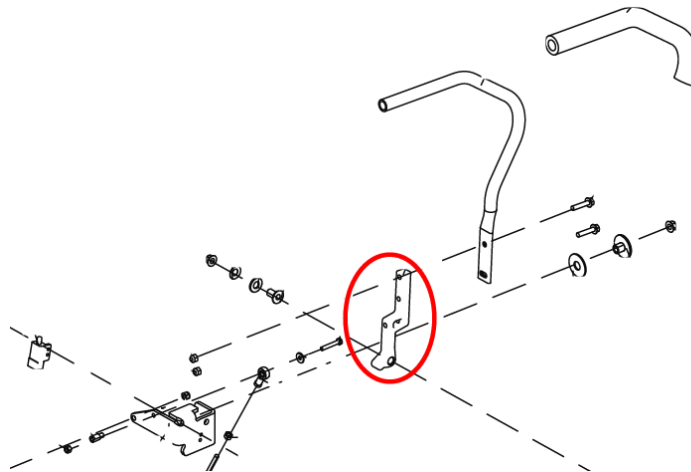
Date: May 21, 2014

Bulletin No: JC-14-06

Product Type: BOB-CAT CRZ & XRZ

Customer Issue: Control arm component breaks

Cause: Control arm 4168100 (shown below) breaks.



Action Required: Due to possible breakage of 4168100 Control Bar, it must be replaced with kit 4170482 S-Control Bar Assembly. The factory will ship the appropriate number of kits to the dealer to cover all units purchased (refer to Products Involved section below).

It is possible to complete this repair without removing the unit from the crate. Refer to Instruction Sheet 4170960. It is also possible to complete this repair at the end customer's site with the tools listed below, thus minimizing transportation costs.

We are asking the dealer to destroy the arm (4168100) and when filling out the warranty claim, add a note that the arm was destroyed. The warranty claim will not be processed without this information.



One BOB-CAT Lane, P.O. Box 469
Johnson Creek, WI 53038 U.S.A.
(920) 699 2000
Fax: (920) 699 6836

Products involved:

- **942600** Serial 00070 – 01236
- **942601AU** Serial 90001 – 90385
- **942601** Serial 00070 – 01722
- **942601AU** Serial 90001 – 90267
- **942602** Serial 00070 – 00545
- **942610** Serial 00070 – 00390
- **942611** Serial 00070 – 00709
- **942612** Serial 00070 – 00342

Required tools to change out the handles:

- (1) 1/2" wrench
- (1) 1/2" wrench or socket
- (1) 9/16" wrench
- (1) 9/16" socket (best if this is deep/extended)

Warranty: You may claim up to 30 minutes of labor under this bulletin. Please file warranty using Service Bulletin Number JC-14-06 with one unit per claim. However, we realize that not all customers are able to bring their units into the dealership for repair, so due to the timing of this situation, if a dealer finds it necessary to travel to a registered customer's location, we will pay a travel fee of \$30 per trip to cover all associated costs and expenses.

If you have any questions, please contact our Customer Service Department at 920-699-2000.

This bulletin is relevant to the departments checked below. Please circulate as appropriate.

SERVICE

☒

WARRANTY

☒

SALES

☒

PARTS

☐