



One BOB-CAT Lane, P.O. Box 469  
Johnson Creek, WI 53038 U.S.A.  
(920) 699 2000  
Fax: (920) 699 6836

## Service Bulletin

**Date:** 4/30/2015

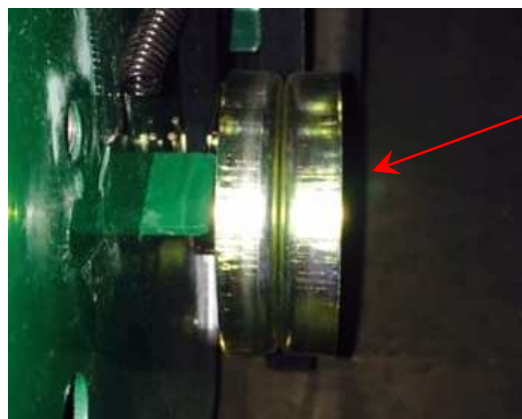
**Bulletin No:** JC-15-09

**Product Type:** Ren-O-Thin

**Customer Issue:** The drive belt could possibly walk off of the idler pulley when transitioning between engagement and disengagement of the drive belt.

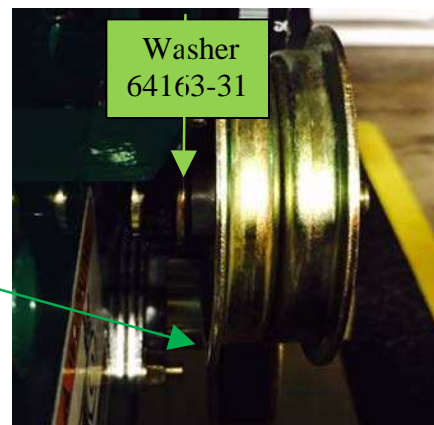
**Cause:** The variation of individual component tolerances could contribute to this situation.

- The effects of these variations are eliminated by using an idler pulley with side lips to retain the belt.



Old

New  
2228016



**Action Required:** Units in the below affected serial range, need a pulley 2228016 with washer 64163-31 installed in place of existing pulley (548942).

**Remove belt cover. Remove pulley. Install washer between pulley and idler arm.**

Products Involved: Model	Serial number
➤ 554870	< 00104
➤ 554871	< 00173
➤ 554872	< 00109
➤ 554873	< 00110
➤ 554874	< 00106
➤ 554875	< 00112



One BOB-CAT Lane, P.O. Box 469  
Johnson Creek, WI 53038 U.S.A.  
(920) 699 2000  
Fax: (920) 699 6836

---

**See the following list for exceptions.**

**Exceptions: the serial numbers listed below were reworked at the factory**

- **554870\*\*\*\*:** 00071, 00100, 00101, 00102, 00103
- **554871\*\*\*\*:** 00137, 00138, 00141, 00143, 00144, 00145, 00146, 00147, 00149, 00168, 00169, 00172
- **554872\*\*\*\*:** 00070, 00071, 00100, 00101, 00102, 00103, 00104, 00105, 00106, 00108,
- **554873\*\*\*\*:** 00100, 00101, 00102, 00106, 00107, 00108
- **554874\*\*\*\*:** 00070, 00071, 00100, 00101, 00102, 00103, 00104, 00105
- **554875\*\*\*\*:** 00070, 00071, 00103, 00104, 00105, 00108, 00109, 00110, 00111

**Warranty:** You may claim up to .25 hour of labor and parts for units covered under this bulletin. Please file warranty using Service Bulletin Number JC-15-09 with one unit per claim.

If you have any questions, please contact our Customer Service Department at 920-699-2000.

This bulletin is relevant to the departments checked below. Please circulate as appropriate.

SERVICE

☒

WARRANTY

☒

SALES

☒

PARTS

☐